

GERVASONI

company profile and portfolio

company
profile
and
portfolio

GERVASONI™

/company profile and portfolio

GERVASONI™

The contract reflects a universe of increasingly versatile styles and spaces arising from original and diverse situations and atmospheres, both engaging and fascinating.

Tradition and modernity, comfort and dynamism, elegance and immediacy, are just some of the demands from those who design, decorate and live in collective spaces.

A challenge that Gervasoni welcomes through the strength of their experience, value of their quality, and the eclecticism of their collection.

Chairs, upholstered furniture and accessories that interpret with versatility, the most diverse architectural styles and languages, merging the needs of the client and desired functionality with the warmth and prestige typical of "living" environments.

In hotels, resorts, restaurants and other places dedicated to hospitality, but also in office spaces and retail shops. A major project that evolves over time, space and the world we live in.

/Gervasoni group

The Gervasoni Group includes Gervasoni, Letti&Co. and Very Wood brands.

The modern standard for casual relaxed furniture from Italy

GERVASONI™

A brand dedicated to the culture of sleep



The finest wooden chairs for the hospitality, contract and residential markets



/markets



Udine

>70
countries

25%
Italy



75%
export

/history

1882**Società Friulana
Industria Vimini**

In 1882 the "Società Friulana Industria Vimini" starts its business in the production of furniture and wicker products.

1925**Giovanni Gervasoni Senior, the
importance of the production**

Giovanni Gervasoni Sr. takes over the company and changes the name in Gervasoni&C. The production evolves from a craft into an industrial production, involving new materials such as rattan, bamboo and cane. He also starts exploring the market of northern Italy and, later, the rest of the country.

1958**Piero Gervasoni
and the design revolution**

Piero Gervasoni, son of Giovanni, joins the company contributing to its growth and bringing the design to support and change the more traditional production of Gervasoni. A new era for Gervasoni, rich of fundamental changes.

1990**Giovanni and Michele Gervasoni, the
brand internationalization**

The sons of Piero Gervasoni join the company in early 1990, in a period of crisis dictated by the changing of the market. They start a big revolution making completely different products. Thanks to this change, Gervasoni becomes a leader in the design in the furniture market and in the international scene.

1998**Paola Navone**

Paola Navone becomes Gervasoni Art Director and the creative force behind the collections which continues today to be successful in the world market.

2009**I.F.A. and Very Wood**

The investment in the contract market: Gervasoni takes over Ifa srl, a small, contract chair manufacturer, respected for its product quality and customer service. From which they create the new brand Very Wood.

2012**Letti&Co.**

The launching of the new brand Letti&Co. with Paola Navone as Art Director, dedicated to the culture of good sleep.

2015**Success in progress!**

Nowadays the company covers an indoor area of 18.000 square meters on a total surface of more than 40.000 square meters with a production that reaches 35.000 pieces per year and employs 90 people.



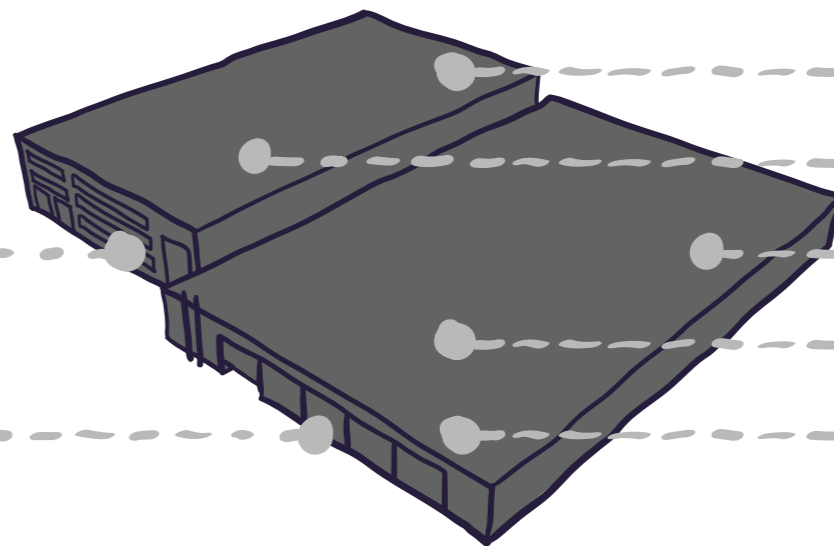
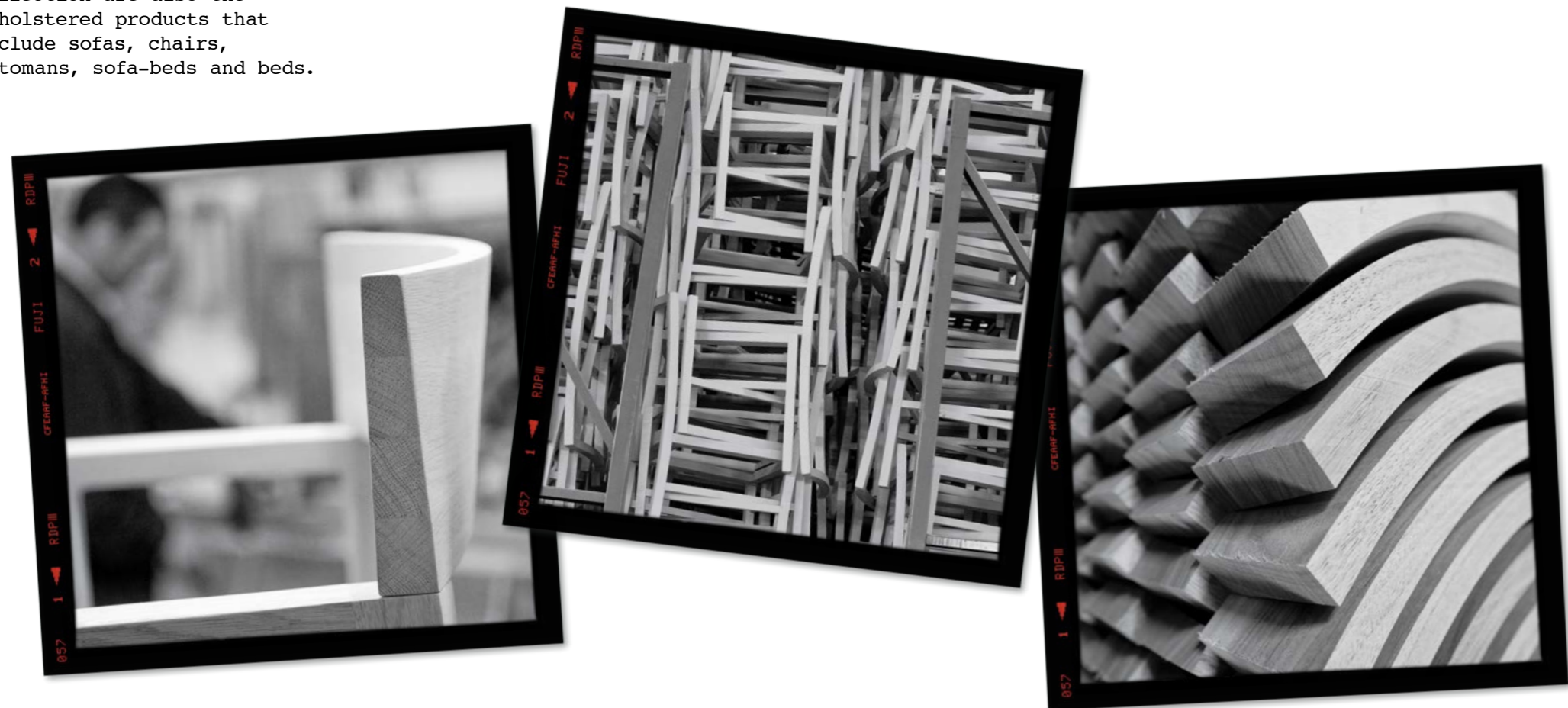
/production

Gervasoni produces high quality furniture for both indoor and outdoor use. Supplying the residential and contract market. Including luxury hotels, restaurants and cruise ships. The collection uses a wide range of materials such as wood, rattan, bamboo, ceramic, woven polyethylene or PVC, aluminium and lamps. Distinctive to Gervasoni's collection are also the upholstered products that include sofas, chairs, ottomans, sofa-beds and beds.



40.000

sqm



showroom

offices

shipping dept.

warehouse

wood working dept.

assembly dept.

finishing dept.



/certification

Main pursue of the management is a manufacturing process taking care of the environment and preserving the ecosystem: the official acknowledgement was achieved in November 1999 obtaining the UNI EN ISO 9001:2008 Company Quality System Certification, in March 2005 obtaining the ISO 14001:2004 Environmental Certification and in January 2012 obtaining the OHSAS 18001:2012 Certification for Health and Safety Management Systems.



**/ISO
14001**

**/ISO
9001**

**/OHSAS
18001**



/projects

Gervasoni has been producing for the contract market since 1930 and its products have been portrayed in old pictures of important hotels, in famous holidays resorts. The furniture looking elegant and timeless in its prestigious environment. Not much has changed other than the some styles of furniture to meet modern living and updating of production techniques to be ensure efficiency.

All other characteristics have remained the charm, comfort, high standard of product both contemporary and classic.

At Gervasoni we have a rich selection Of furniture and accessories and the ability to design and manufacture according to the customers' needs, providing them with a to customise piece. Ensuring our clients return time and time again.



01

/Point Yamu
p.12

02

/Blue Palace
p.22

03

/Seerose
Resort & Spa
p.26

04

/L'AND
Vineyards Resort
p.28

05

/Vilalara
Thalassa Resort
p.32

06

/La Féline
Blanche
p.38

07

/Grace Mykonos
p.40

08

/Grace Santorini
p.44

09

/Southern
Ocean Lodge
p.48

10

/Sublime Comporta
p.50

11

/Santorini Secret
p.60

12

/Caprisuite
p.64

13

/Masseria
Torre Coccaro
p.66

14

/Ca' De Tobia
p.70

15

/Casas na Areia
p.72

16

/Diamonds Star
of the East
p.76

17

/B&B Le Contrade
p.78

18

/Lech Lodge
p.84

19

/Rica Hotel Narvik
p.88

20

/Gretl am
See-Seehof Keller
p.92

21

/La Cantine
p.96

22

/D'Amore
p.100

23

/Cucina Torcicoda
p.104

24

/Hilton Molino
Stucky Venice
Bacaromi Restaurant
p.108

25

/Pane e acqua
p.112

26

/ALT Hotel
Toronto Airport
p.114

27

/Der Schwarzacher
p.118

28

/Fresh Hotel
p.120

29

/Valbella Inn
p.122

30

/Conscious Hotel
Vondelpark
p.124

31

/Fleurs de Zermatt
p.128

32

/Seehotel Ambach
p.130

33

/Il laboratorio
del gusto
p.134

34

/TNT Express,
Headquarters
p.138

01 /Point Yamu

RESORT

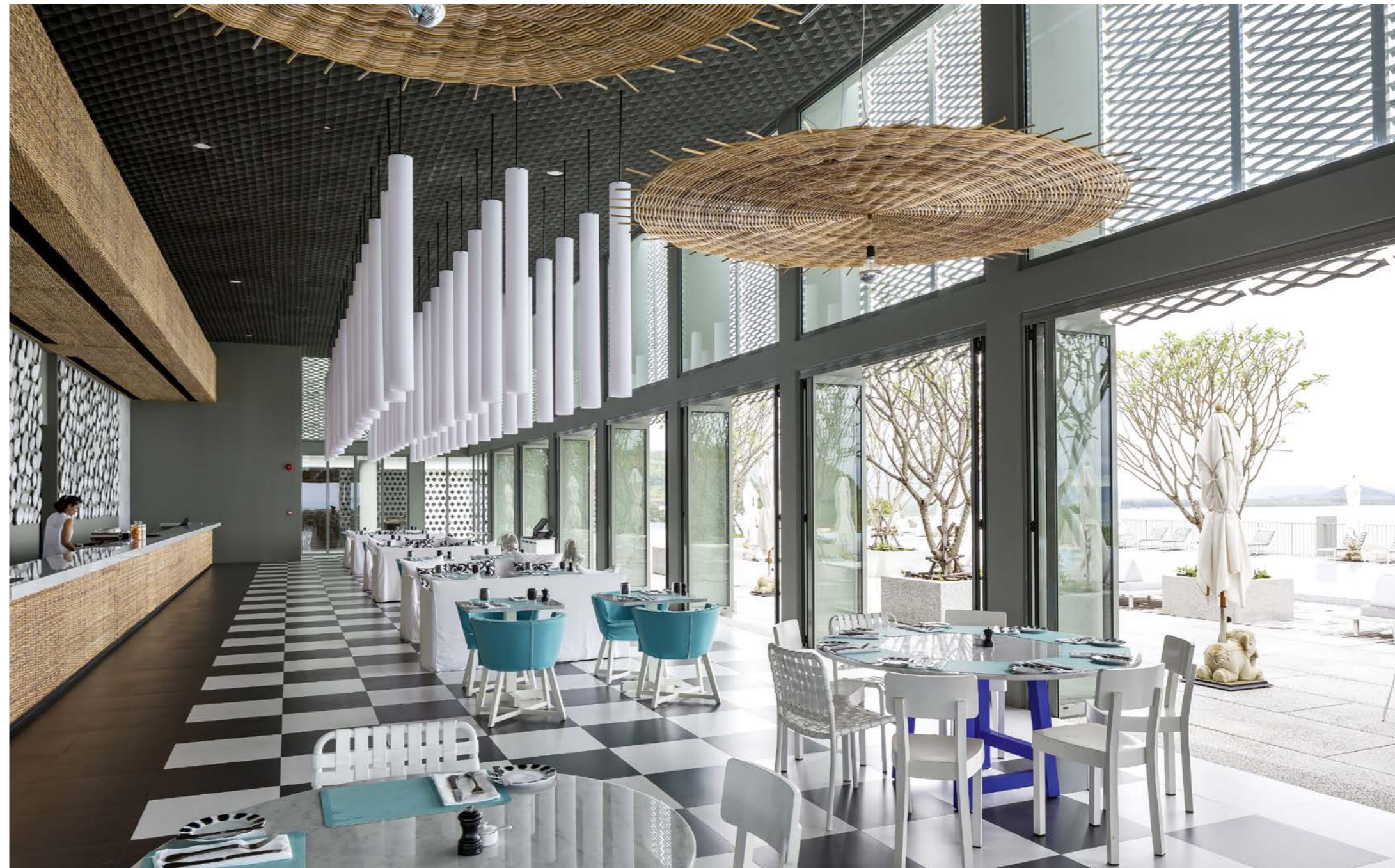
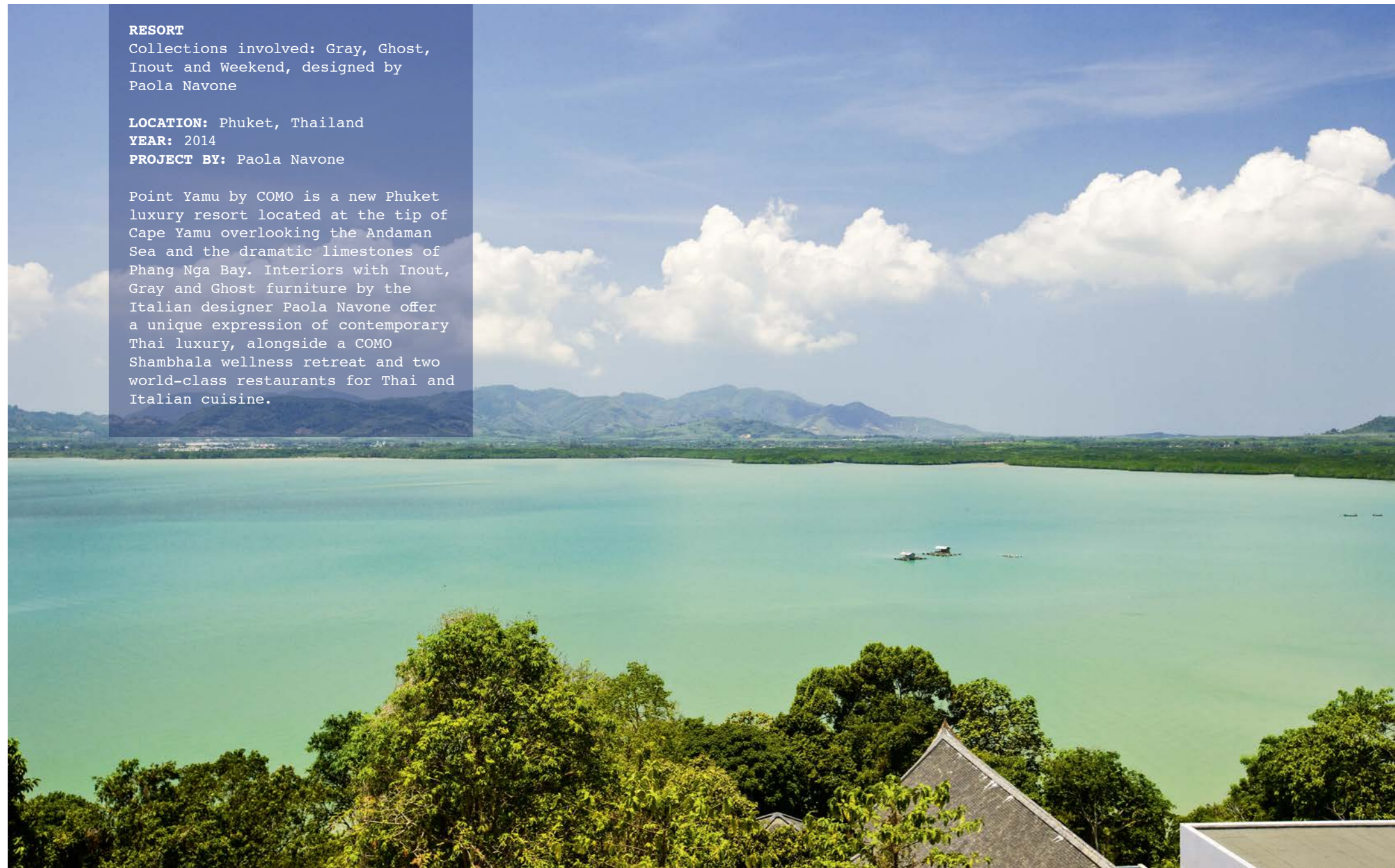
Collections involved: Gray, Ghost, Inout and Weekend, designed by Paola Navone

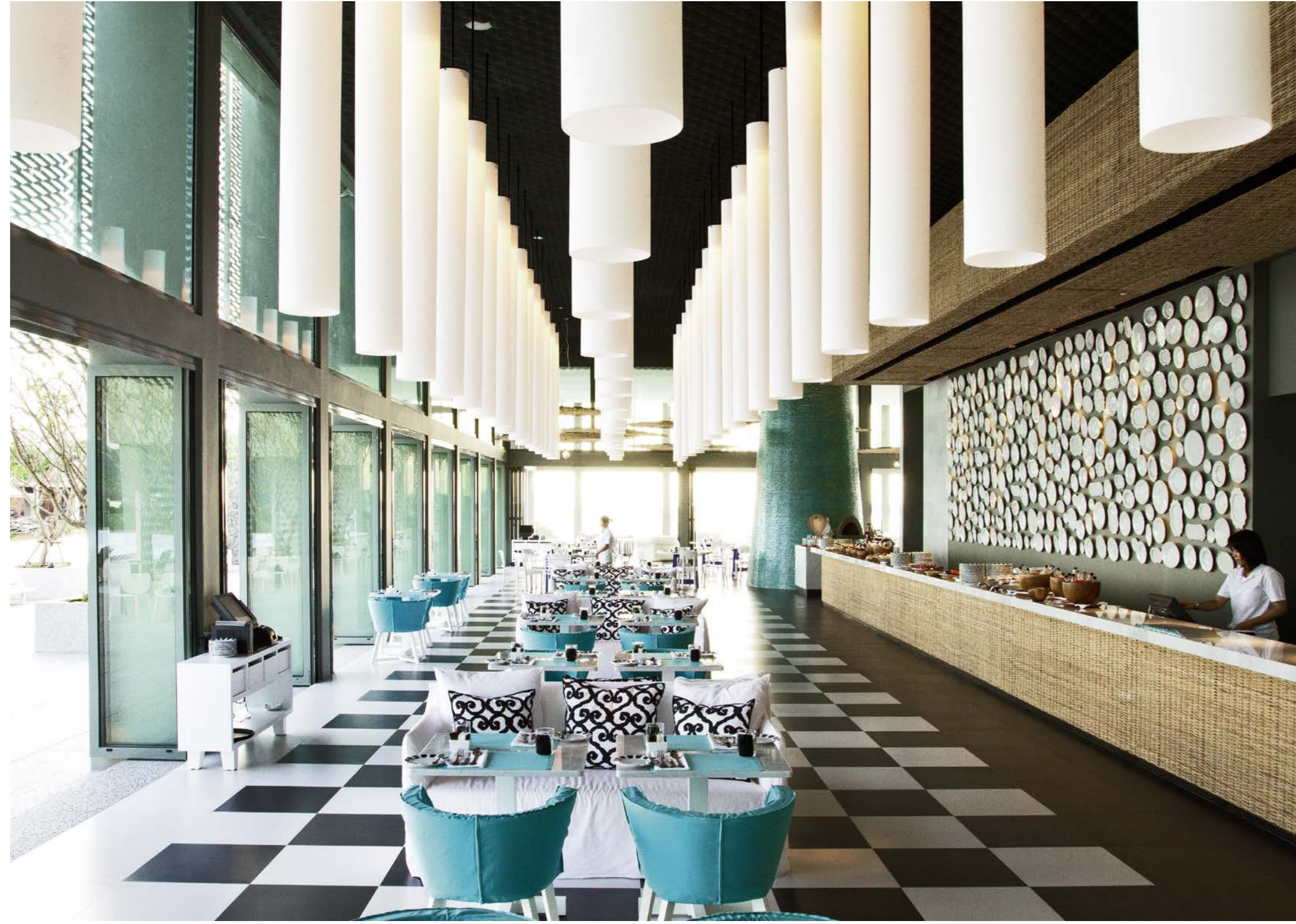
LOCATION: Phuket, Thailand

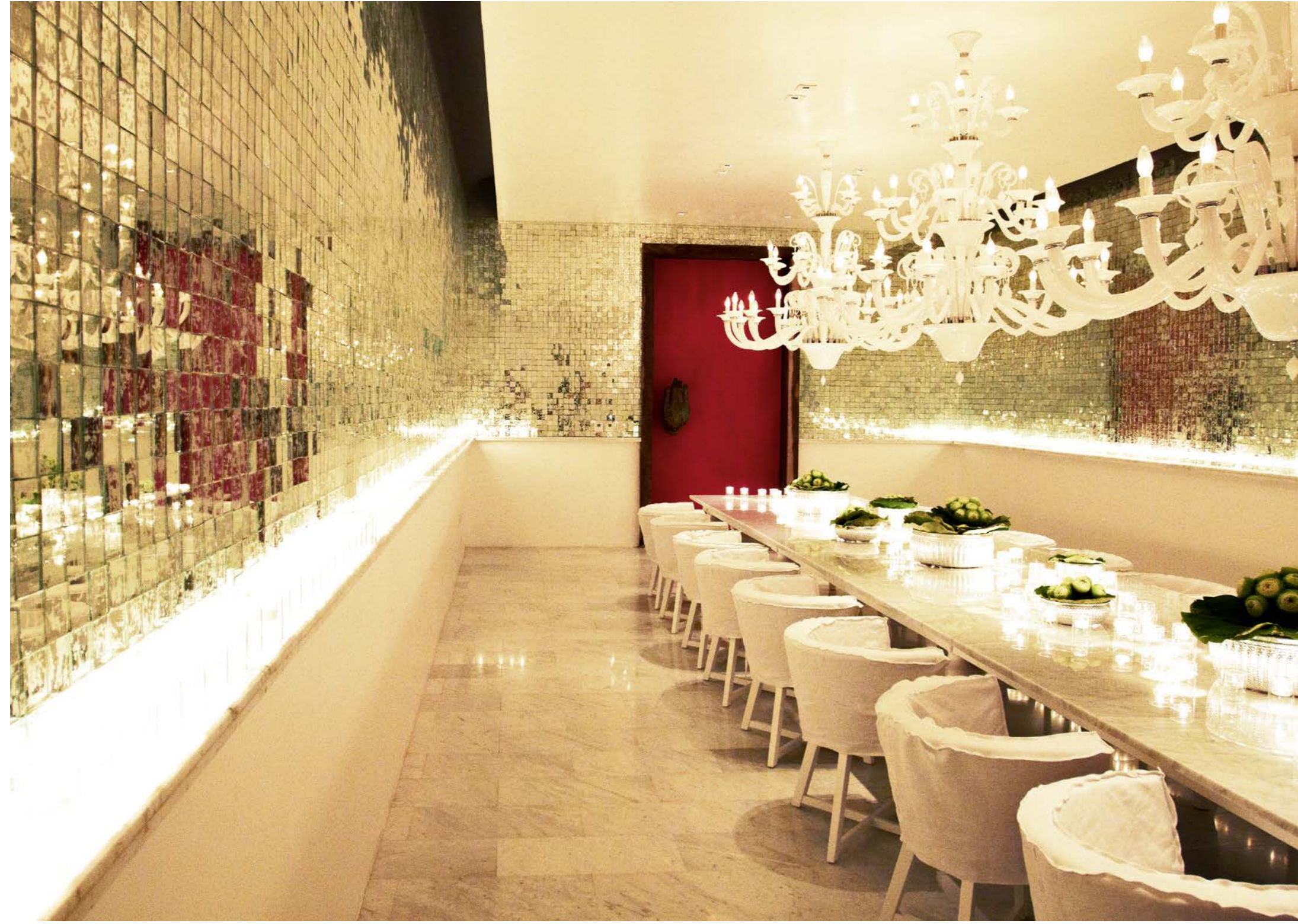
YEAR: 2014

PROJECT BY: Paola Navone

Point Yamu by COMO is a new Phuket luxury resort located at the tip of Cape Yamu overlooking the Andaman Sea and the dramatic limestones of Phang Nga Bay. Interiors with Inout, Gray and Ghost furniture by the Italian designer Paola Navone offer a unique expression of contemporary Thai luxury, alongside a COMO Shambhala wellness retreat and two world-class restaurants for Thai and Italian cuisine.











02 / Blue Palace

RESORT & SPA

Collections involved: Croco, Inout, Weekend and Otto, designed by Paola Navone

LOCATION: Crete, Greece

YEAR: 2007

A spectacular resort along the Aegean shore, a terrace overlooking the sea, a great swimming-pool. Gervasoni takes the spotlight on the Arsenali Lounge with its Croco sofas and pieces of Inout collection. It is also placed in the restaurant with Otto and Weekend seats.





03 / Seerose Resort & Spa

RESORT & SPA

Collections involved: Ghost, Inout and Gray, designed by Paola Navone

LOCATION: Meisterschwanden, Switzerland

YEAR: 2013

Nestled on the famed coast of Elounda on the island of Crete, this luxury beachfront resort offers emblematic views to the relics of Spinalonga Island. Blue Palace Resort & Spa, with exceptional charm, architecture and style, is the perfect hideaway to combine island de luxe accommodations, authentic cuisine and a soothing retreat for the senses.

Gervasoni was chosen to furnish the bedrooms with Gray armchairs and benches and Ghost sofas, the common area with Gray flower stands and Inout sofas.



04 /L'AND Vineyards Resort

RESORT & SPA

Collections involved: Inout and Ghost, designed by Paola Navone

LOCATION: Montemor-o-novo, Portugal

YEAR: 2010

PROJECT BY: Promontório Arquitectos

INTERIOR DESIGN: Márcio Kogan (Studio MK27)

L'AND Vineyards Resort is located on extraordinary scenery, in a vineyard, in the heart of Alentejo, 15 minutes from Évora and 45 minutes from Lisbon. It is a Luxury Boutique Resort hotel with only 20 suites that elect Wine as its inspiration, distinguished by the seamless manner in which contemporary architecture blends in to nature, promoting a unique atmosphere of understated luxury and simple beauty. L'AND Vineyards Resort integrates an artificial Lake, Vineyards, SPA, Restaurant, WINE Club & Winery; L'AND MADE Store (regional articles), Cellar with Multifunctional Events Room, Swimming Pools (Adults and Children), Children Playground, and Tennis Court among many other facilities.





05 / Vilalara Thalassa Resort

RESORT & SPA

Collections involved: Ghost, Gray, Bolla and Inout, designed by Paola Navone

LOCATION: Lagoa, Portugal

YEAR: 2009

Grupo Amorim, one of the biggest and most influent Groups in Portugal, with branches in many activities among which the tourism, selected, together with the important architect studio Promontorio from Lisbon, Gervasoni for the refurbishment of its five star Vilalara resort, placed in the beautiful Algarve region, in Portugal.

Ghost, Gray, Bolla and Inout have been chosen to furnish the public area, in this case the lounge bar and the restaurant, the suites and to decor the great swimming pool overlooking the ocean.







06 / La Féline Blanche

HOTEL

Collections involved: Ghost and Gray, designed by Paola Navone

LOCATION: Saint-Gervais-Les-Bains, France

YEAR: 2009

A charming and luxury hotel based in St. Gervais, in front of Mont Blanc, characterised by a comfortable and resonant intimate style. Gervasoni has furnished this hotel with sofas, armchairs and beds of Ghost collection and chairs of Gray collection, permeating the atmosphere with a modern chic style.



07 / Grace Mykonos

HOTEL

Collections involved: Bolla, Ghost and Inout, designed by Paola Navone

LOCATION: Mykonos, Greece

YEAR: 2010

PROJECT BY: Divercity & Sofia Vantaraki

The Grace Mykonos is an intimate, exclusive boutique hotel located just north of the town of Mykonos above the sandy and protected beach of Agios Stefanos. The graceful coexistence of traditional architectural elements and local craftsmanship, with modern facilities and simple but elegant design touches is apparent throughout the property. Gervasoni perfectly fits this style: the reception area with its nuances of the Aegean Sea has been furnished with our Ghost and Bolla Collections, whilst the Grace bar & restaurant has been furnished with Inout tables and chairs.





08 / Grace Santorini

RESORT

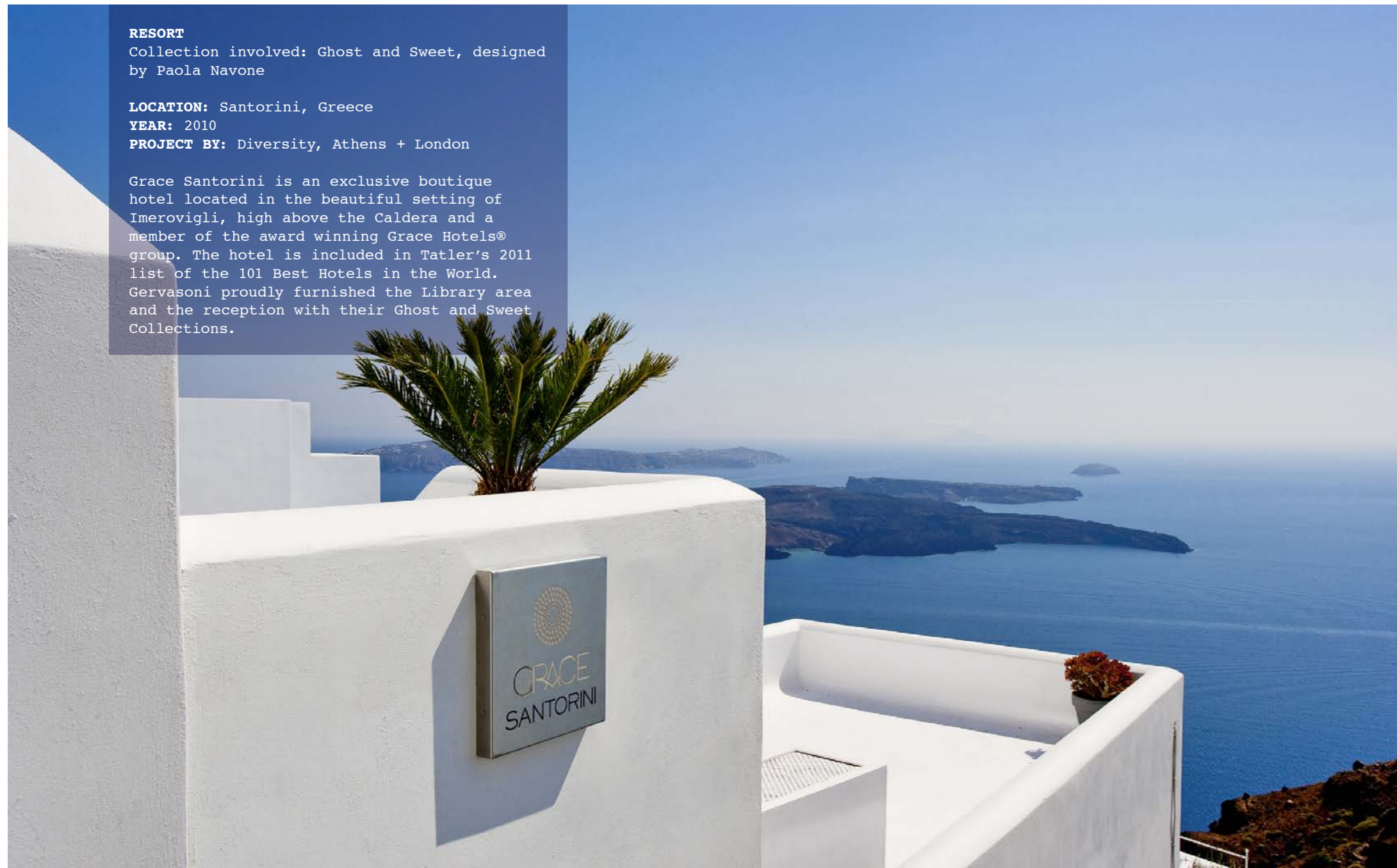
Collection involved: Ghost and Sweet, designed by Paola Navone

LOCATION: Santorini, Greece

YEAR: 2010

PROJECT BY: Diversity, Athens + London

Grace Santorini is an exclusive boutique hotel located in the beautiful setting of Imerovigli, high above the Caldera and a member of the award winning Grace Hotels® group. The hotel is included in Tatler's 2011 list of the 101 Best Hotels in the World. Gervasoni proudly furnished the Library area and the reception with their Ghost and Sweet Collections.





09 / Southern Ocean Lodge

RESORT

Collections involved: Inout, Ghost, Gray, Otto and News, designed by Paola Navone

LOCATION: Kangaroo Island, Australia

YEAR: 2007

A luxury resort, designed to give comfort, style and personal intimacy, perfectly integrated in the natural environment, located on a cliff overlooking the Ocean in the wild nature of Kangaroo Island. This is the Southern Ocean Lodge, an exclusive place where design and modern luxury integrate in creating a refined and cosy location.



10 / Sublime Comporta

COUNTRY HOUSE RETREAT

Collections involved: Ghost, Gray, Inout, Sweet and Log, designed by Paola Navone

LOCATION: Comporta, Portugal
YEAR: 2013

Located only a one hour and fifteen minute drive south of Lisbon, Comporta, which comprises several villages, rice fields, vineyards, pine forests and 40 km of pristine, white sandy beaches across a few ten-thousand hectares, is still one of Portugal's best kept secrets.

Sublime Comporta aspires to serve as a premium Country House Retreat, fusing a beautiful natural environment with a soulful, spiritual experience you can not find anywhere else. A place to relax body and mind, surrounded by Comporta's traditional and simple lifestyle, enriched with elegance and a modern touch with Ghost sofas and beds, Gray tables and chairs, Sweet chairs, Log poufs and Inout furniture.











11 / Santorini Secret

HOTEL

Collections involved: Ghost, Sweet, Log, Brick, Gray designed by Paola Navone

LOCATION: Santorini, Greece

YEAR: 2014

Santorini Secret Luxury Boutique Hotel in Oia is the ultimate new destination for travellers seeking the full Grecian package. Every room captures the striking combination between the old and the new seamlessly. Crafted from authentic and local volcanic materials yet contrasted against a blend of the latest interior trends, the suites offer a harmonious base for your Santorini exploration.





12 / Caprisuite

HOTEL

Collections involved: Inout and Ghost, designed by Paola Navone

LOCATION: Anacapri (Naples), Italy

YEAR: 2012

PROJECT BY: Arch. Giuliano Andrea dell'Uva

Caprisuite is located in the heart of the ancient village of Anacapri, "above Capri", not far from the Blue Grotto, the Punta Carena lighthouse and all the wonders of Capri. Originally a part of the S. Michele's convent built in the XVII century, Caprisuite is a new Mason De Charme. The hotel consists of two rooms, that enjoy the exclusive use of certain areas: the inner courtyard for romantic dinners in garden, the lodge for breakfast time and the living room with its fireplace. Gervasoni furnished the bedrooms with Ghost armchair and the courtyard with Inout armchairs.



13 / Masseria Torre Coccaro

HOTEL

Collections involved: Inout, Gray and Ghost designed by Paola Navone

LOCATION: Sevelletri di Fasano (Brindisi), Italy
YEAR: 2006

Masseria Coccaro offers his guests an unforgettable stay in an ancient Masseria, an elegant setting but also homely, in which the past lives in every detail. From the tower, built by the Malta Chevaliers to defend from saracén invasions, you can admire the sea and warm african sunsets.

The suites and all the other rooms are surrounded by magnificent olive groves and are filled with all the modern comforts, a blend of elegance and simplicity with Ghost sofas. Inout armchairs and poufs were chosen to furnish the outdoor pool and garden.





14 /Ca' De Tobia

LUXURY GUEST HOUSE

Collections involved: Gray, Ghost, Inout, designed by Paola Navone; Corallo, designed by Michael Sodeau

LOCATION: Noli (Savona), Italy
YEAR: 2013

PROJECT BY: Gian Paolo Guerra

In the charming atmosphere of Noli, one of the famous Italian Maritime Republic, literally five steps away from the beach, an old sea house has been transformed into a guest house.

Ca' de Tobia offers to its customers comfort and charme. Gervasoni has been chosen to furnish the six bedrooms with Gray beds, Ghost sofas, Inout ceramic small tables and Corallo coat hanger, a cozy living room with Ghost sofas, the reception with an Inout chair and the terrace, where guests will enjoy a rich brunch right in front of the sea, with Inout tables.



15 / Casas na Areia

BEACH HOUSES

Collection involved: Ghost and Gray, designed by Paola Navone

LOCATION: Comporta, Portugal

YEAR: 2010

PROJECT BY: Manuel e Francisco Aires Mateus

DECORATION BY: Semnome

Architects Manuel and Francisco Aires Mateus present the project "Case a Comporta" as part of the Portuguese Pavilion of the 12th edition of Architectural Biennial Exhibition in Venice. Placed on the sand dunes of Comporta, the four residential volumes – two made of stone and two made of wood – are characterized by the use of wood and straw. The project perfectly represents the combination of local tradition, innovation and integration between architecture and nature. In the common areas, such as the living room, the wooden houses are placed directly on the sand creating a continuous landscape between internal and external spaces. It's here where Gervasoni features its Ghost and Gray Collections.





16 / Diamonds Star of the East

BEACH RESORT

Collections involved: Otto, Inout and Bolla, designed by Paola Navone

LOCATION: Nungwi, Zanzibar

YEAR: 2010

PROJECT BY: Germano Aghemo

The exclusive Diamonds Star of the East part of Planhotel chain, located on the North-Western shores of magical Zanzibar, at Nungwi, is a great example of architecture integrated in the environment. Specified by Architect Germano Aghemo, Gervasoni furniture have been placed inside the exclusive Club Villas and in the prestigious Presidential Villa. With the natural elegance that marks Gervasoni furniture, Otto and WK collections furnish the interiors of the villas, Inout and Bolla furnish the marvellous private gardens.



17 /B&B Le Contrade

BED & BREAKFAST

Collections involved: Ghost, Gray, Inout and Weekend, designed by Paola Navone

LOCATION: Santarcangelo di Romagna (Rimini), Italy

YEAR: 2012

PROJECT BY: Biagetti Arredamenti, Santarcangelo

The B&B Le Contrade is located in the historical center of Santarcangelo di Romagna, one of the most picturesque Medieval villages of the Rimini's hinterland.

Gervasoni furnished the bedrooms with Ghost beds, armchairs and Weekend tables, the relax area with Ghost sofas, Gray armchairs and tables and Inout bottles, the garden with a panoramic terrace on the Adriatic coast and San Marino with Inout chairs and Weekend tables, as well as the breakfast room, located in a suggestive and typical cavern of the region.







18 / Lech Lodge

LUXURY CHALET

Collections involved: Ghost and Gray, designed by Paola Navone

LOCATION: Lech am Arlberg, Austria

YEAR: 2012

PROJECT BY: Christian Prasser, CP Architektur

Built from regional materials like larch wood, the exclusive Lech Lodge-Private Chalet can be found just a ten-minute walk from the centre of Lech am Arlberg and offers utmost privacy, a personal concierge service, private saunas and panoramic mountain views.

Gervasoni furnished the open-plan living room with a big sofa area and a fireplace with Ghost sofas and Gray armchairs, the fully equipped kitchens with Gray chairs and the bedrooms with Ghost beds and sofas and Gray and Inout coffee tables.





19 / Rica Hotel Narvik

HOTEL

Collection involved: Gray, designed by Paola Navone

LOCATION: Narvik, Norway

YEAR: 2013

PROJECT BY: Scenario, Oslo

Rica Hotel Narvik is the city's most modern business hotel. It is one of Northern Norway's highest buildings with an exciting exterior with the sloping glass facade supported by two towers. The architectural shape that towers over sixteen floors contributes to the hotel's stunning views of the center of Narvik, Ofotfjorden, the mountain Dronningen and the surrounding mountains. Gervasoni furnished the panoramic all-day restaurant with Gray chairs.





20 /Gretl am See-Seehof Keller

RESTAURANT

Collection involved: Gray, designed by Paola Navone

LOCATION: Caldaro (Bolzano), Italy

YEAR: 2011

The restaurant enjoys the superb natural setting of the Caldaro lake. It is placed in an ancient farmstead of the XIV century. The terrace, immersed in the vineyards, offers to his hosts breathtaking views. Gervasoni furnished the restaurant with Gray chairs.





21 /La Cantine

RESTAURANT

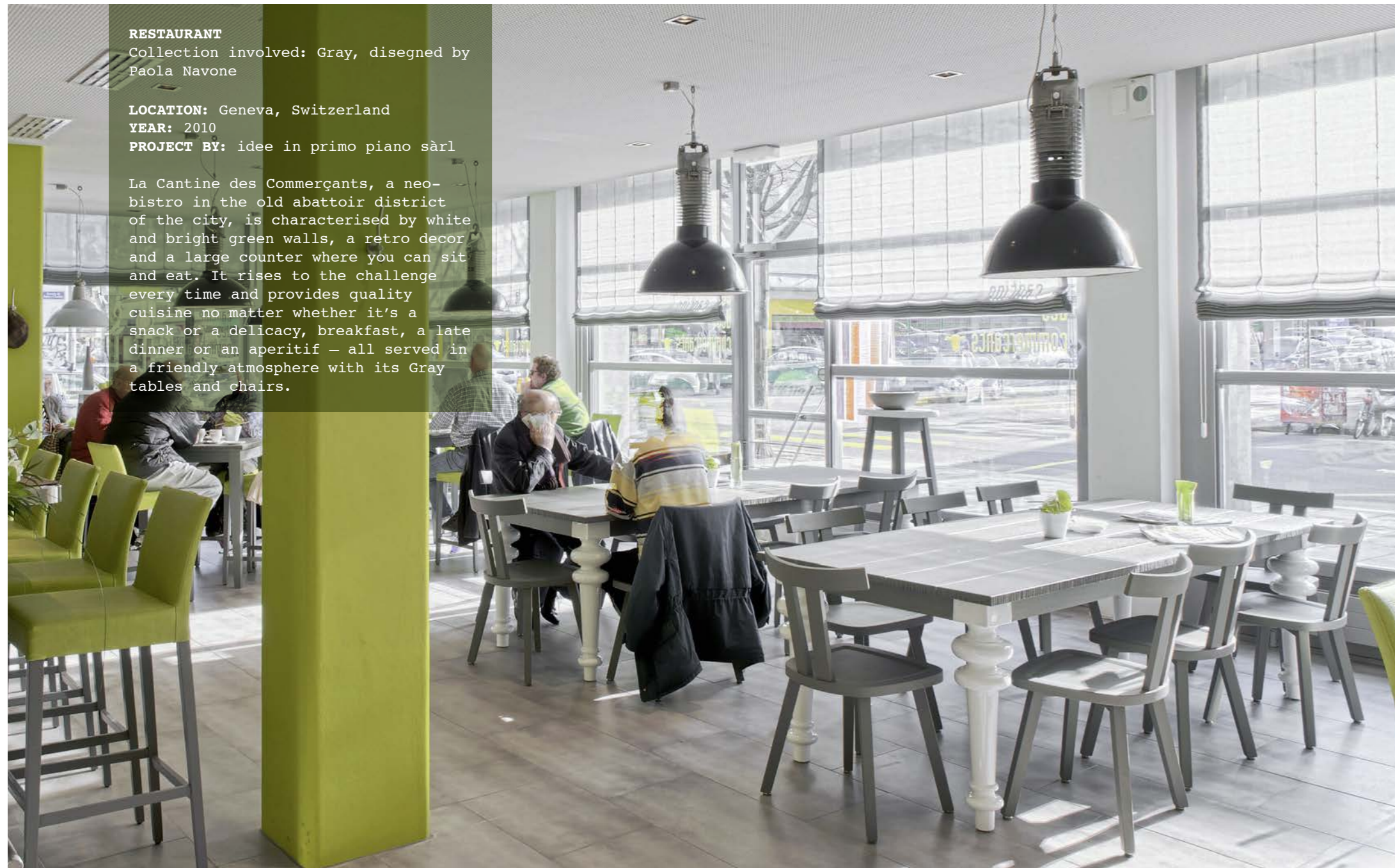
Collection involved: Gray, disegned by Paola Navone

LOCATION: Geneva, Switzerland

YEAR: 2010

PROJECT BY: idee in primo piano sàrl

La Cantine des Commerçants, a neo-bistro in the old abattoir district of the city, is characterised by white and bright green walls, a retro decor and a large counter where you can sit and eat. It rises to the challenge every time and provides quality cuisine no matter whether it's a snack or a delicacy, breakfast, a late dinner or an aperitif – all served in a friendly atmosphere with its Gray tables and chairs.





22 / D'Amore

RESTAURANT

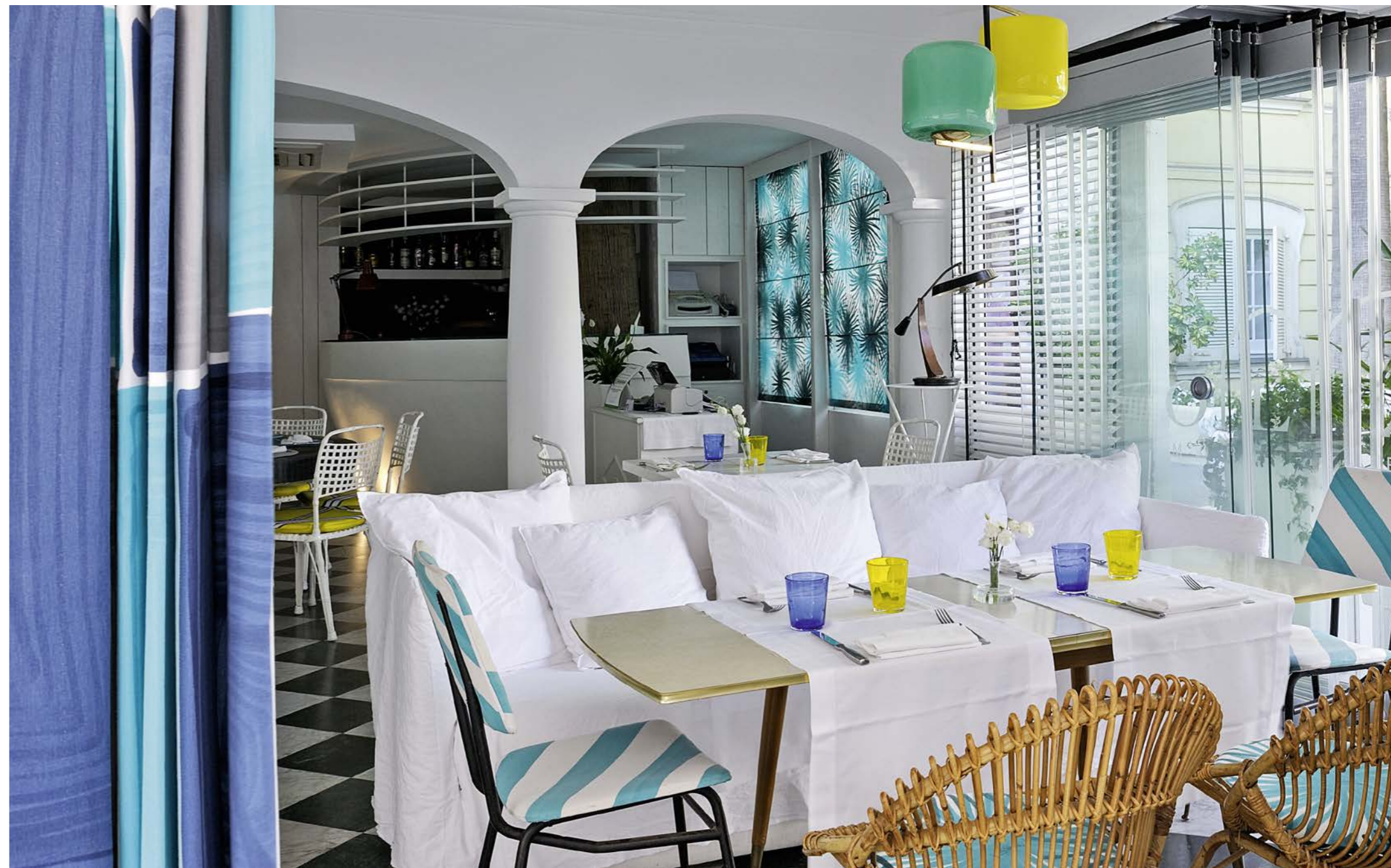
Collection involved: Ghost, designed by Paola Navone

LOCATION: Capri (Naples), Italy

YEAR: 2012

DESIGNED BY: arch. Giuliano Andrea dell'Uva

Anyone entering the restaurant D'Amore breathe, without being forced, the wind of Capri, combining taste and beauty in a continuous interchange between old and new. The exclusive ambience of the Restaurant D'Amore is composed of different areas, each with its own style apparently different, but in the context married into a perfect harmony. Gervasoni was chosen to furnish the space "Living", a very trendy corner with fine white fabric Ghost sofas and armchairs, created to encourage the ritual of conversation with the tastes of the typical Mediterranean gourmet revisited by just a touch of nouvelle cuisine.





23 / Cucina Torcicoda

RESTAURANT

Collection involved: Gray, designed by Paola Navone

LOCATION: Florence, Italy

YEAR: 2013

PROJECT BY: arch. Luigi Fragola

The restaurant is in the vibrant Santa Croce neighborhood, around the corner from the Santa Croce church. Cucina Torcicoda designed by the architect Luigi Fragola stretches for over a thousand square meters, with five different areas, including an osteria, a restaurant, a pizzeria, an ice-cream parlour and a shop of local food and wine specialties. Each area has its own vocation, menu and inviting atmosphere, always characterized by high quality, authenticity and research. Gray chairs surround the tables in different rooms.





24 / Hilton Molino Stucky Venice Bacaromi Restaurant

BAR & RESTAURANT

Collections involved: Gray, Ghost and Black, designed by Paola Navone

LOCATION: Giudecca (Venice), Italy

YEAR: 2014

PROJECT BY: Retail Design Srl,
Arch. Paolo Lucchetta, Giovanni Frisan,
Maddalena Gallamini

Savoring Venetian dishes and the freshest seasonal ingredients at the Hilton Molino Stucky Venice Hotel's Bacaromi Restaurant is a unique experience. Guests can enjoy spectacular views of the Giudecca Canal while eating in its informal atmosphere. Gervasoni furnished Gray chairs, armchairs and tables, Ghost chairs and Black barstools.





25 / Pane e acqua

RESTAURANT

Collections involved: Gray and Black, designed by Paola Navone

LOCATION: Milan, Italy

YEAR: 2008

PROJECT BY: Paola Navone

Recently restyled, the former tobacconist's shop of Via Matteo Bandello in Milan, transformed by Paola Navone for Rossana Orlandi to create a small high-quality bistrot with an original concept (from the dishes to the furnishings, which are all for sale), conserves its character in a creative reinterpretation of tradition, based on research that absorbs and reworks all kinds of influences.

Here, seats part of our Gray collection have been personalized and transformed into unique items. The result is: memory, with its values, lives again in a contemporary scenario.



26 /ALT Hotel Toronto Airport

HOTEL

Collections involved: Ghost, Gray, Inout, Croco and Sweet, designed by Paola Navone

LOCATION: Missisagua (Ontario), Canada

YEAR: 2013

PROJECT BY: Lemay Michaud, Montreal

ALT is a trendy and stylish hotel that reinvents the concept of the hotel stay. It is a balance between modernity, a dynamic and colourful ambience, comfort, and well-thought out location. This eco-friendly hotel is just 2 km from the Toronto Pearson Airport. It offers striking design, cozy comfort and a friendly and relaxed atmosphere.

Gervasoni furnished the main hall, the relax areas and the reception with Ghost sofas, Gray chairs, armchairs, tables and coffee tables, Inout ceramic coffee tables and barstools, Croco lamps and Sweet mirrors and lamps.





27 / Der Schwarzacher

RESORT & SPA

Collection involved: Ghost,
designed by Paola Navone

LOCATION: Saalbach-Hinterglemm, Austria

YEAR: 2010

PROJECT BY: Mrs Hasenauer (Owner)
together with Die Wohnkultur

CONTRACTOR: Karl Weber Interior Design &
Decoration

Directly located in the ski run district of Saalbach-Hinterglemm, Der Schwarzacher is a characteristic and exclusive restaurant-lounge-après Ski that Gervasoni has furnished with Ghost sofas and chairs.



28 / Fresh Hotel

ROOF GARDEN

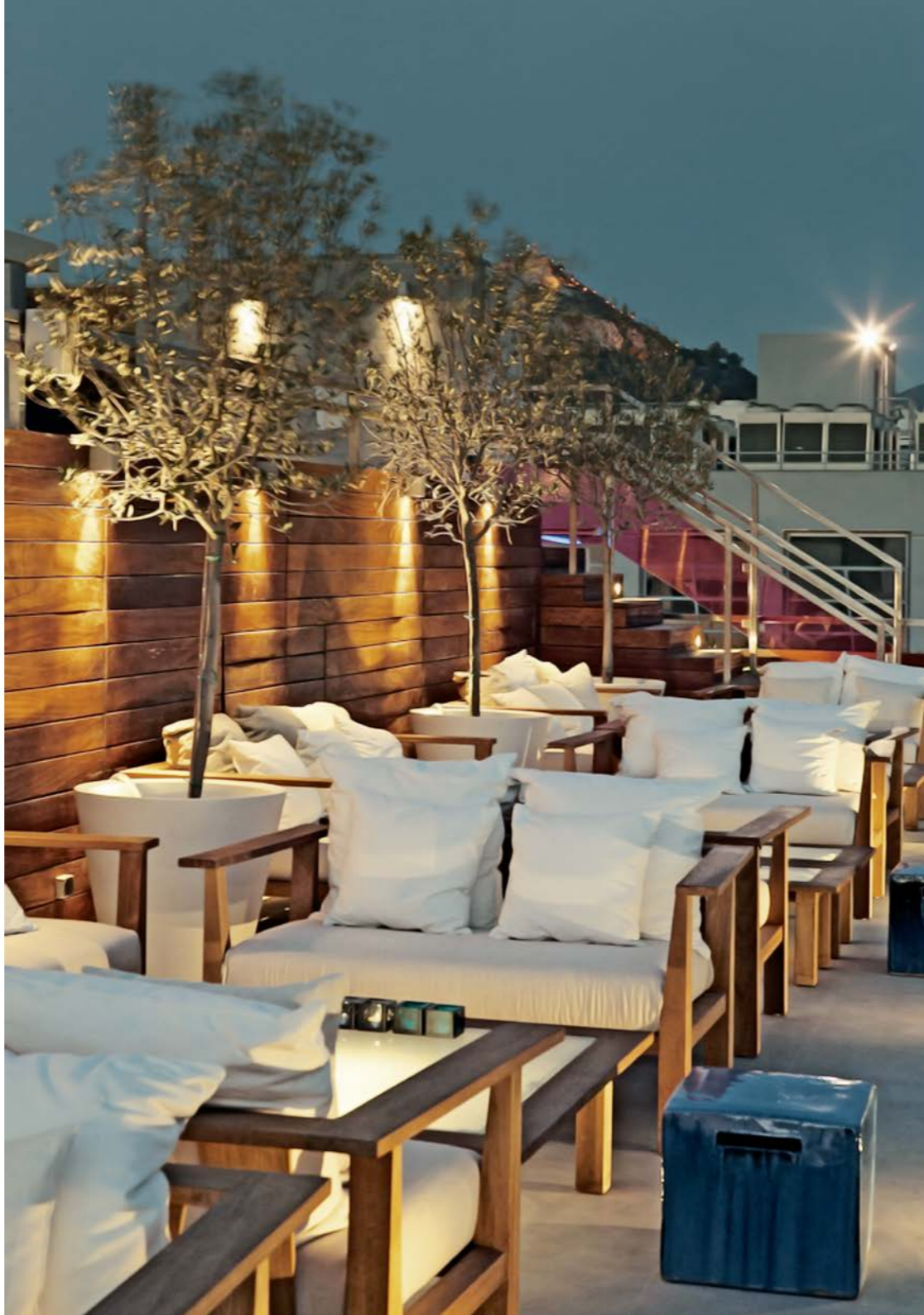
Collection involved: Inout, designed by Paola Navone

LOCATION: Athens, Greece

YEAR: 2004

PROJECT BY: Zege/Zeppos-Georgiadis & Associates

Designed by the Studio Zege/Zeppos-Georgiadis & Associates from Athens, the 133 rooms and suites are conceived with a spotlight on design. Simple lines and bright colours create elegant and minimal environments to welcome guests in a relaxing climate. The Air Lounge bar, in which Gervasoni furniture have a lead role, offers a spectacular view over the Acropolis.



29 / Valbella Inn

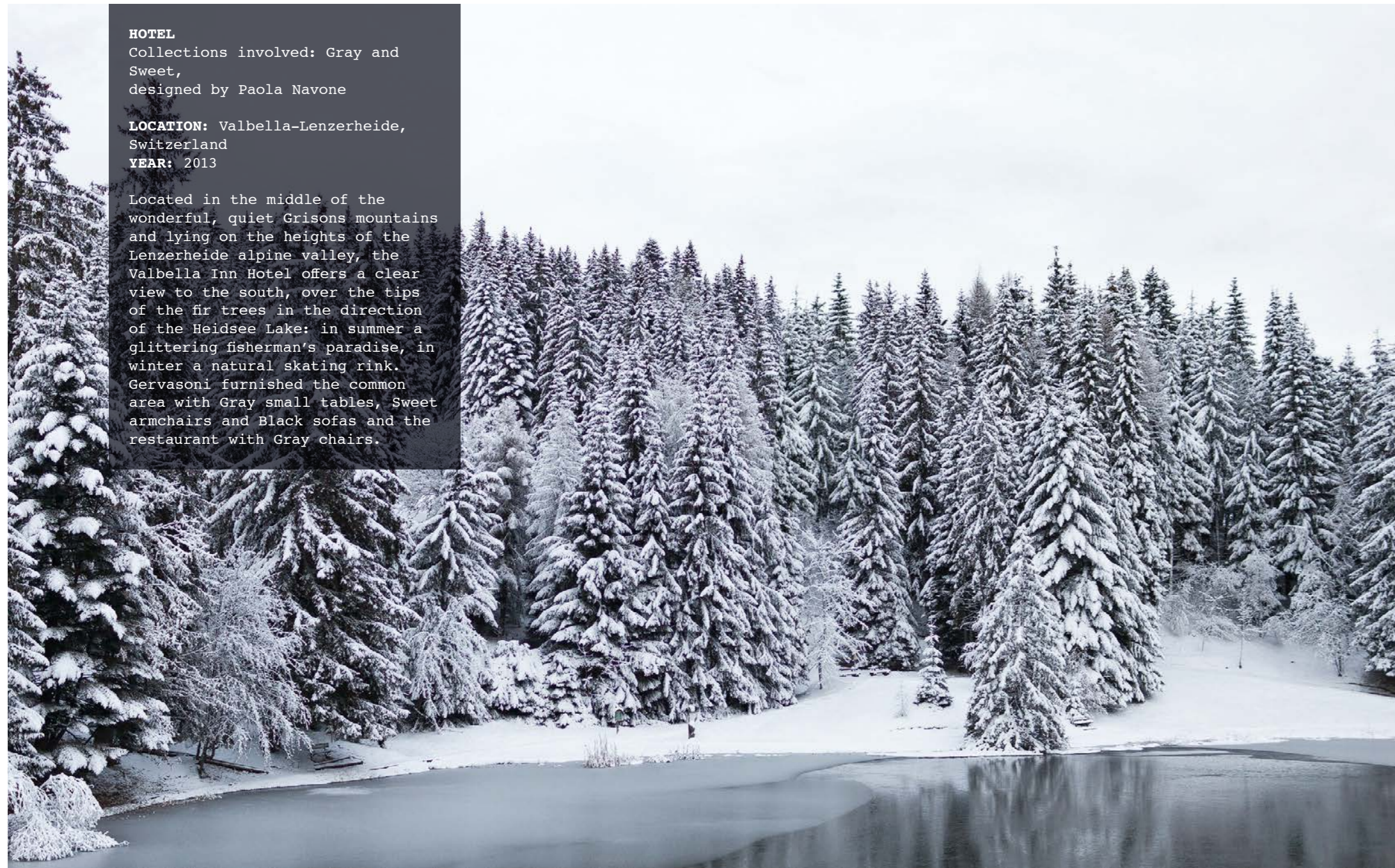
HOTEL

Collections involved: Gray and Sweet, designed by Paola Navone

LOCATION: Valbella-Lenzerheide, Switzerland

YEAR: 2013

Located in the middle of the wonderful, quiet Grisons mountains and lying on the heights of the Lenzerheide alpine valley, the Valbella Inn Hotel offers a clear view to the south, over the tips of the fir trees in the direction of the Heidsee Lake: in summer a glittering fisherman's paradise, in winter a natural skating rink. Gervasoni furnished the common area with Gray small tables, Sweet armchairs and Black sofas and the restaurant with Gray chairs.



30 / Conscious Hotel Vondelpark

CITY HOTEL

Collection involved: Black, Ghost, Gray, Log and Otto, designed by Paola Navone

LOCATION: Amsterdam, The Netherlands

YEAR: 2010

PROJECT BY: Wieneke Van Gemeren

Having opened in March 2010, Conscious Hotel Vondelpark is a stunning, luxurious, eco-designed hotel right in the heart of Amsterdam.

Gervasoni has furnished the lobby with Ghost armchairs, Gray tables and Otto ottomans, the bar and the breakfast room with Gray chairs and Black barstools. In each room of the hotel, the Gray chairs are featured and our Log are used as an "eco-night table"!





31 /Fleurs de Zermatt

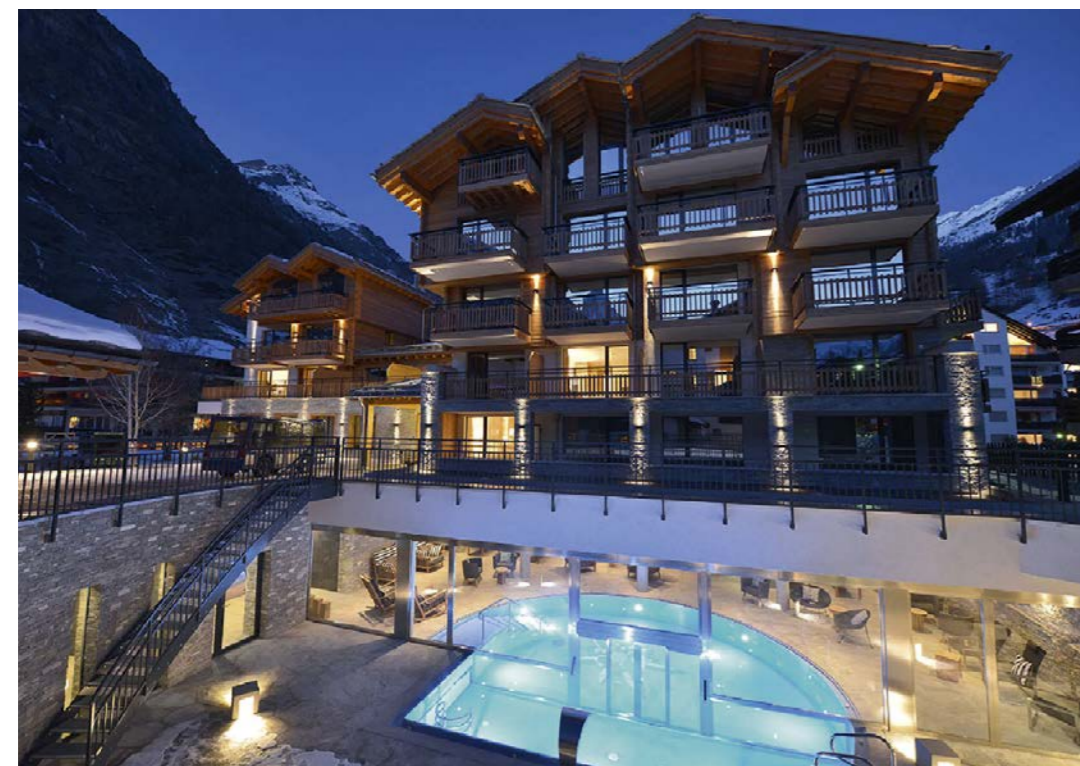
HOTEL

Collections involved: Sweet, Inout, Ghost and Gray, designed by Paola Navone

LOCATION: Zermatt, Switzerland

YEAR: 2013

The Fleurs de Zermatt Alpenhotel, opened in December 2013 after a complete refurbishment, enjoys a quiet location in Zermatt. Guests will enjoy a pleasant, relaxed and harmonious atmosphere in the bright Alpine-style rooms, furnished with Ghost sofas and Gray armchairs and in the wellness oasis, with its swimming pool that spans from the indoor to the outdoor area, where you will relax on Inout armchairs, rocking chairs and Sweet armchairs. The garden offers Matterhorn views, that invites you to relax during the warmer months.



32 / Seehotel Ambach

HOTEL

Collection involved: Inout, designed by Paola Navone

LOCATION: Caldaro (Bolzano), Italy

YEAR: 2014

A magical place in the green corner on the northeast shore of Caldaro lake, between water, vineyards and mountains. Seehotel Ambach was built from 1970 to 1973 by the young architect Othmar Barth. The result is the product of a vision of a completely new approach to hotel architecture, one that seeks to explore the true nature of the locality and its traditions and express them in a contemporary formal language. Its spacious terrace was furnished with the collection Inout.





33 / Il laboratorio del gusto

RESTAURANT

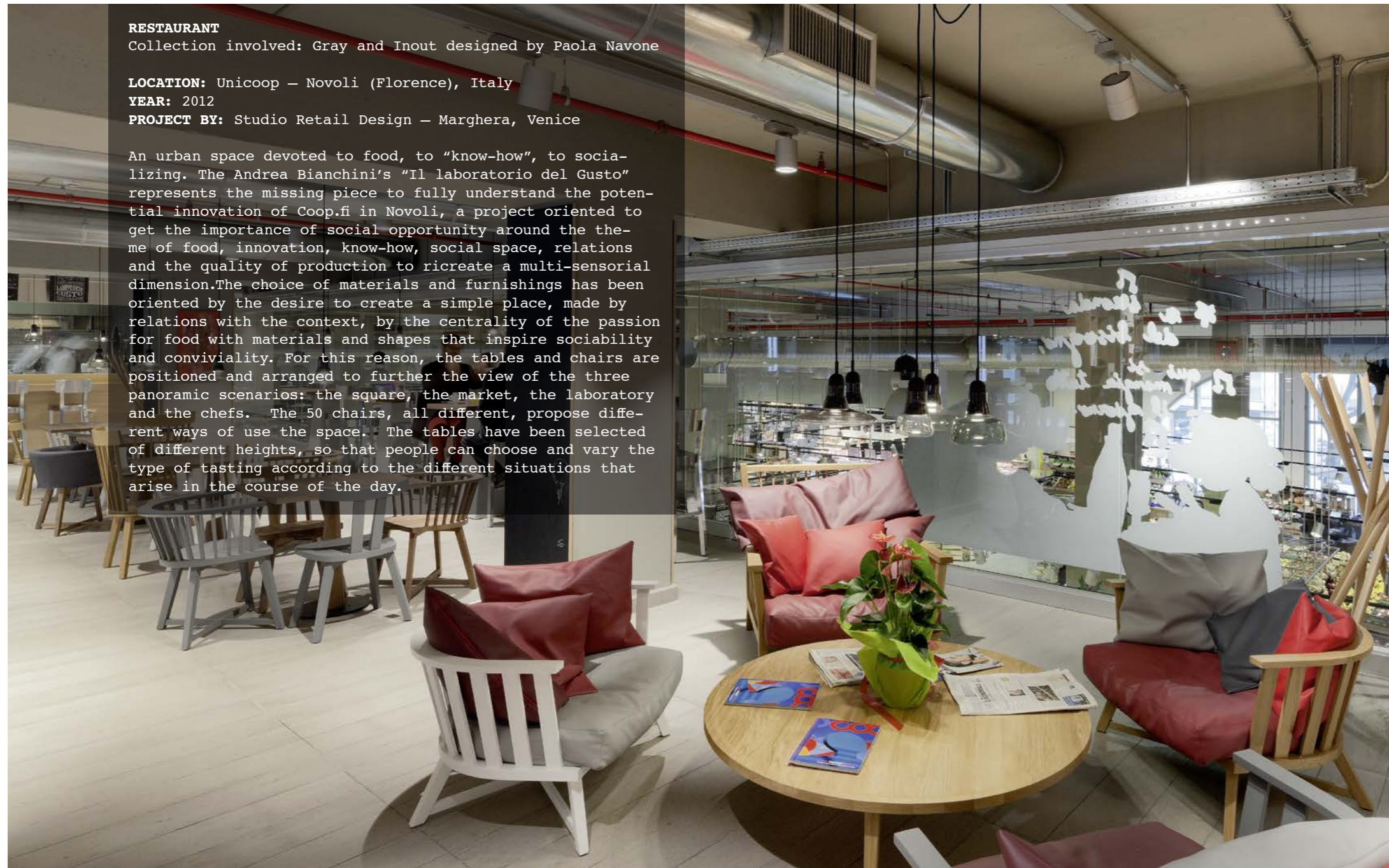
Collection involved: Gray and Inout designed by Paola Navone

LOCATION: Unicoop – Novoli (Florence), Italy

YEAR: 2012

PROJECT BY: Studio Retail Design – Marghera, Venice

An urban space devoted to food, to “know-how”, to socializing. The Andrea Bianchini’s “Il laboratorio del Gusto” represents the missing piece to fully understand the potential innovation of Coop.fi in Novoli, a project oriented to get the importance of social opportunity around the theme of food, innovation, know-how, social space, relations and the quality of production to recreate a multi-sensorial dimension. The choice of materials and furnishings has been oriented by the desire to create a simple place, made by relations with the context, by the centrality of the passion for food with materials and shapes that inspire sociability and conviviality. For this reason, the tables and chairs are positioned and arranged to further the view of the three panoramic scenarios: the square, the market, the laboratory and the chefs. The 50 chairs, all different, propose different ways of use the space. The tables have been selected of different heights, so that people can choose and vary the type of tasting according to the different situations that arise in the course of the day.





34 / TNT Express Headquarters

OFFICE BUILDING

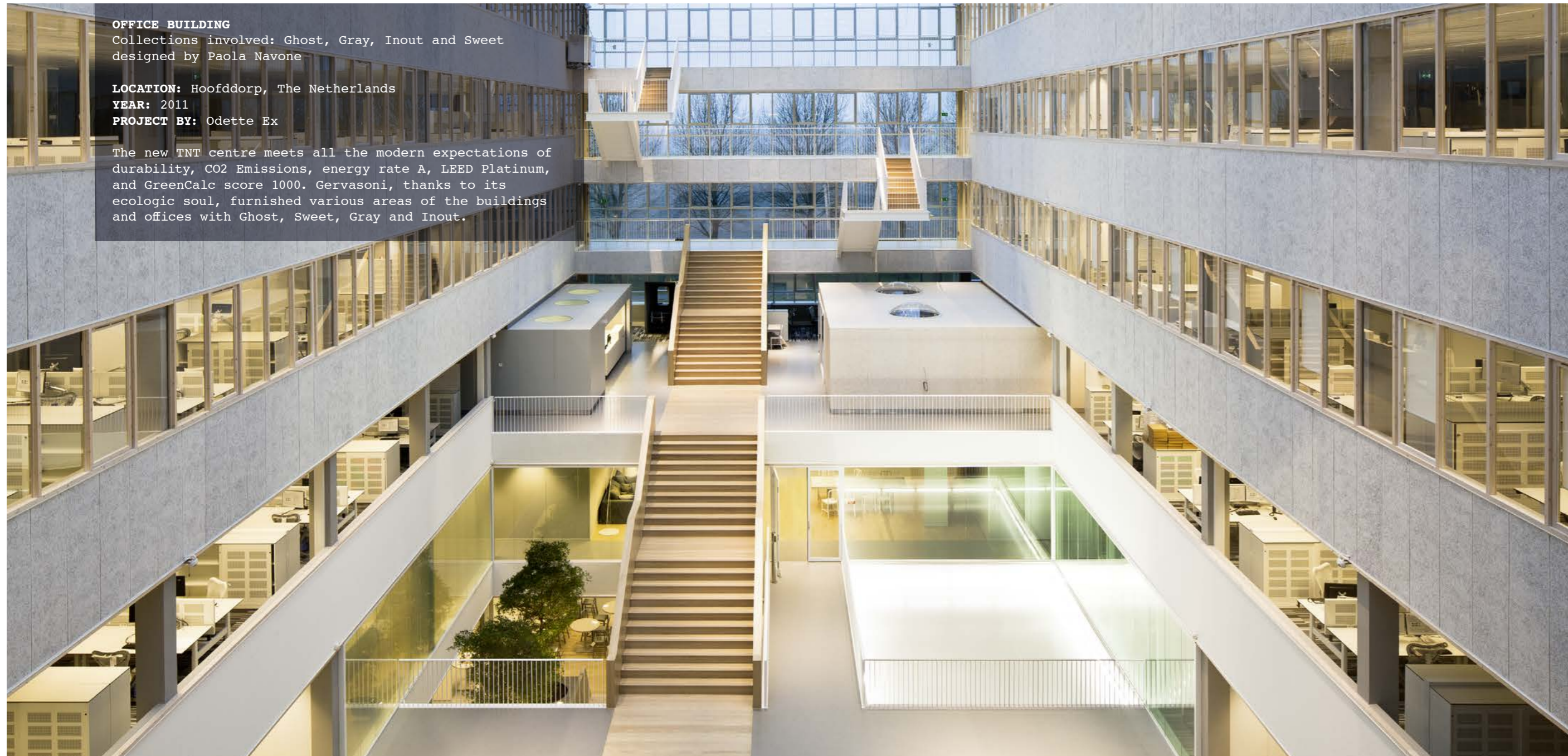
Collections involved: Ghost, Gray, Inout and Sweet designed by Paola Navone

LOCATION: Hoofddorp, The Netherlands

YEAR: 2011

PROJECT BY: Odette Ex

The new TNT centre meets all the modern expectations of durability, CO2 Emissions, energy rate A, LEED Platinum, and GreenCalc score 1000. Gervasoni, thanks to its ecologic soul, furnished various areas of the buildings and offices with Ghost, Sweet, Gray and Inout.





/selected references

ALGERIA

Les Falaises Residence, Oran

ANTIGUA

Ed Café, Antigua

AUSTRALIA

Origin Energy, Head Offices, Melbourne
 Hilton Hotel, Melbourne
 Southern Ocean Lodge, Kangaroo Island
 Charlestown Square Shopping Centre, Newcastle
 Sofitel, Cannes
 Dee Why Hotel, Sydney
 Newport Arms Hotel, Sydney
 The Rocks Hotel, Sydney

AUSTRIA

Hotel Steigenberger, Bad Tatzmannsdorf
 Hotel Schloß Leoben, Kitzbühel
 Grand Hotel, Kitzbühel
 Hotel Sonnenalpe, Naßfeld
 Golf Club, Velden
 Hotel Warmbaderhof, Warmbad-Villach
 Linsberg Therme, Bad Erlach
 Hotel Bergland, Soelden
 Hotel Der Schwarzach, Saalbach-Hinterglemm
 Hotel Spanberger, Gröbmung
 Hotel Kempinski, Kitzbuehel
 Luxury Chalet Lech Lodge, Lech am Arlberg

BAHREIN

Ken Lo’s Memories of China, Adliya

BULGARIA

Thracian Cliffs Golf & Beach Resort, Kavarna
 Sofi a Princess Hotel, Sofia

CROATIA

Punta Skala Resort, Zadar
 Hotel Neptun, Porec
 Hotel Punta Osejava, Makarska
 Hotel Lapad, Dubrovnik
 Restaurant “Il Secondo”, Zagreb
 Ristorante Dubravka, Dubrovnik

CANADA

ALT Hotel Toronto Airport, Mississauga

CZECH REPUBLIC

E-Gate, Prague

DENMARK

Hotel Opus Horsens, Horsens
 Hotel Plesner, Skagen

EGYPT

Four Seasons Hotel, Cairo

FRANCE

Hotel Thalassothérapie, Hendaye
 Residence Eureva, La Londe
 La Cantine du Faubourg, Paris
 Sofitel, Cannes
 Boscolo Hotel, Nice
 Riviera Golf Club, Mandelieu
 Le Club House Golf d’Allot, Boè
 Thalasso/Spa Marin, La Grande Motte
 Hôtel Club Le Grand Bleu, Calcatoggio
 Hotel La fèline blanche, Saint-Gervais-Les-Bains

GERMANY

Mercedes Benz Museum, Stuttgart
 Forum Hotel, Berlin
 Hotel Krammler, Berlin
 Hotel Alte Mühle, Chemnitz-Siegmar
 Golfanlage Mangfall, Feldkirchen
 Porsche Tennisclub, Filderstadt
 Steigenberger Airport Hotel, Frankfurt
 Steigenberger Hotel, Freudenstadt
 SAS Radisson Hotel, Köln
 SAS Radisson Hotel, Berlin
 Hotel 3 Löwen, München
 Hotel K+K, München
 Norfer Golfclub, Norg
 Ramada Hotel, Sindelfingen
 Restaurant Breuninger, Stuttgart
 Hotel Madison, Hamburg
 Waldhotel, Stuttgart
 Golfplatz Heddesheim, Viernheim
 Askepios Nordsee-Klinik, Westernland
 Amano Hotel, Berlin
 Zoofenster Waldorf Astoria, Berlin

GREAT BRITAIN

Scandic Crown Hotel, Gatwick
 Virgin Atlantic Headquarters, London
 Old Course Hotel Golf Resort, St. Andrews
 Runnymede Hotel & Spa, Egham Surrey
 The Crown Hotel, Suffolk

GREECE

Blu Palace, Crete

Athenaeum, Athens
 Interni Restaurant, Athens
 Interni Restaurant, Mykonos
 Interni Restaurant, Thessaloniki
 Hotel Lena Mary, Ermioni
 The Westin Resort, Costa Navarino
 Grace Hotel, Mykonos
 Grace Hotel, Santorini
 Santorini Secret Hotel, Santorini
 Fresh Hotel, Athens

HUNGARY

Lukács Hungarian Bath
 Echo Residence, Tihany at Lake Balaton

ISRAEL

Mamilla Hotel, Jerusalem
 David Citadel Hotel, Jerusalem
 The Terraces, Netanya

ITALY

Hotel Metropol, Diano Marina (IM)
 Welcome Hotel, Legnano (MI)
 Grand Hotel Astoria, Grado (GO)
 Hotel Antares, Villafranca (VR)
 Hotel Bibione Palace, Bibione (VE)
 Hotel Caesius, Bardolino (VR)
 Hotel Da Silvio, Bellagio (CO)
 Residence Borgo Le Terrazze, Bellagio (CO)
 Hotel L’Approdo, Pettenasco (NO)
 Golf Club Ca’ degli Ulivi, Costernano (VR)
 Hotel Bellevue, Jesolo (VE)
 Hotel Ermitage, Jesolo (VE)
 Hotel Cipriani (VE)
 Hotel Croce di Malta, Jesolo (VE)
 Hotel Poiano, Garda (VR)
 B4 Hotel, Padova
 Hotel Europa Monetti, Cattolica (RN)
 Hotel Green Park 1, Casinalbo (MO)
 Hotel Green Park 2, Campogalliano (MO)
 Circolo Nautico e Della Vela, Porto Ercole (GR)
 Starhotel Michelangelo, Firenze
 Hotel Casa Angelina, Praiano (SA)
 Hotel Sandalia, Nuoro
 Hotel Villa San Bartolo, Ragusa
 Boscolo Hotel, Mestre (VE)
 Masseria Hotel Torre Fiore, Pisticci (TA)
 Villa Franca, Positano (SA)
 Villa Park, Ortisei (Bz)
 Villa Bardini, Firenze
 Hotel Ramandolo, Udine

Hotel Villa Premiere, Udine
 Hotel Della Piccola Marina, Capri (NA)
 Hotel Executive, Bari
 Masseria Torre Maizza, Fasano (BR)
 Hotel Lido Torre Egnazia, Fasano (BR)
 Forte Village, Pula (CA)
 Hotel Gabbiano Azzurro, Golfo Aranci (SS)
 Hotel Is Morus Relais, Pula (CA)
 Hotel Li Cuncheddi, Olbia
 Hotel Ramazzino, Porto Cervo (SS)
 Resort Terra di Mare, S. Teodoro (OT)
 Hotel Tempo di Mare, Favignana (TP)
 Hotel Horizon Touring, Acireale (CT)
 Villa Esperanza, Milazzo (ME)
 Hotel Piccolo Giardino, Taormina(ME)
 Hotel Caprisuite, Anacapri(NA)
 Hotel Masseria Torre Coccaro, Savelletri di Fasano (BR)
 Luxury Guest House Ca’ De Tobia, Noli (SV)
 B&B Le Contrade, Santarcangelo di Romagna (RN)
 Restaurant Gretl am See-Seehof Keller, Caldaro (BZ)
 Restaurant D’amore, Capri (NA)
 Restaurant Cucina Torcicoda, Firenze
 Bar&Reastaurant Hilton Molino Stucky
 Venice Bacaromi Restaurant, Giudecca Venezia
 Restaurant Pane e Acqua, Milano
 Seehotel Ambach, Caldaro (BZ)
 Restaurant Il Laboratorio del Gusto, Novoli (FI)
 JW Marriott Resort & SPA, Venezia (VE)

JAPAN

Hotel Royal, Narita
 Bulgari Hotel, Tokyo
 Nishitetsu Inn Naha
 Grand Garden, Fukuokajyosui

JORDAN

Royal Hashemite Court Multipurpose Room, Akaba

KUWAIT

Rice Restaurant, Kuwait City
 Le Notre Paris, Kuwait City
 Symphony Hotel Missoni, Salmiya

MALAYSIA

Shell Malaysia

MALDIVES

W Maldives Retreat & Spa, Fesdu Island
 Viceroy Resort, Male

MAROCCO

Sofitel Mogador Golf & Spa, Essaouira
 Hotel du Golf, Marrakech
 Sofitel, Agadir
 Bahrain Embassy, Bahrain Palece, Rabat

MAURITIUS

Lux Belle Mare Resort

MEXICO

Mandarin Oriental Riviera Maya, Playa del Carmen
 Nima Bay, Puerto Vallarta

MONACO

Forum Grimaldi, Montecarlo

MONTENEGRO

Ristorante Hugo
 Porto Montenegro

NETHERLANDS

Conscious Hotel, Amsterdam
 TNT Centre, Amsterdam
 Tommy Hilfinger, Amsterdam
 Conservatorium Hotel, Amsterdam

NEW CALEDONIA

Hotel Ramada, Noumea

NORWAY

Rica Hotel Narvik, Narvik

PANAMA

Luna Restaurant, Panama

PORTUGAL

Vilalara Thalassa Resort, Praia da Gaivotas-Lagoa
 L’And Vineyard Resort, Montemor-o-novo
 Country house retreat Sublime Comporta, Comporta
 Beach Houses Casas na Areia, Comporta

QATAR

Al Jasassiya Guest Palace, Doha
 Banana Island Resort in Doha by Anantara
 Beach House residence in Dukhan (Royal House)

Golf Villa Project in Doha

SEYCHELLES ISLANDS

Four Season Resort, Mahé

SPAIN

Hotel NH Sotogrande, Cadiz
 Reserva Cortesin, Casares Malaga
 Art Hotel, Barcellona
 Apolo Hotel, Gran Canaria
 Hotel Alma, Sevilla
 Hotel Conquistador, Tenerife
 Hotel Moreque, Tenerife
 NH Hotel, Caceres
 Reserva Cortesin, Casares
 Hotel Vall De Nuria, Girona

SWITZERLAND

Hotel Central, Zürich
 Hotel Greulich, Zürich
 Weisse Arena, Laax
 Hotel Valbella Inn, Valbella
 Hotel La Val, Brigels
 Hotel Guarda Val, Lenzerheide
 Hotel Sonne, Meisterschwanden
 Parkhotel, Zug
 Vieux Manoir, Murten-Meyriez
 Buffet De La Gare Des Eaux, Vivies, Genève
 La Cantine des Commerçants, Genève
 Hotel Sonne, Eich
 Seerose Resort&Spa, Meisterschwanden
 Hotel Fleurs de Zermatt, Zermatt

TAIWAN

W Taipei Hotel, Taipei

THAILAND

Resort Point Yamu, Phuket

TURKEY

Hotel Labada, Antalya
 Ciragan Palace Hotel, Istanbul
 Marin Princess, Istanbul

TUNISIA

Radisson Blu Resort & Thalasso, Djerba

USA

Hotel Saba, Rosemary Beach, Florida
 W Hotels, Detroit + Fort Lauderdale + Miami
 The Shore Club, Miami Beach
 Delano Hotel, Miami Beach

Alys Beach Resorts, Florida
 MGM Grand Hotel, Las Vegas
 Restaurants Wolfgang Puck, Las Vegas
 La Concha Resorts, Puerto Rico
 Royal Carribean Cruise Lines
 Allied Marine (Ferretti Yachts), Fort Lauderdale
 55 Wall Street (Cipriani Group), New York
 Four Season Hotel, Hualalai – Hawaii
 St Regis Bal Harbour Resort, Miami Beach
 Surfcomber Hotel, Miami Beach
 Edition Hotel, Miami Beach
 Traymore Hotel, Miami Beach

UNITED ARAB EMIRATES

Saadiyat Beach Club, Abu Dhabi
 Royal Mirage (The Palace) Beach Lounge, Dubai
 OBIKA restaurant, Dubai Marina
 BAHRIA, Dubai Marina
 St. Regis Hotel Beach Restaurant, Abu Dhabi
 One & Only Royal Mirage JETTY Lounge, Dubai

ZANZIBAR

Diamonds Star of the East, Nungwi

CRUISE LINERS

Queen Elizabeth I, Cunard Line
 Queen Elizabeth II, Cunard Line
 Queen Mary 2, Cunard Line
 Crown Princess, Princess Cruises
 Emerald Princess, Princess Cruises
 Sun Princess, Princess Cruises
 Dawn Princess, Princess Cruises
 Grand Princess, Princess Cruises
 Sea Princess, Princess Cruises
 Regal Princess, Princess Cruises
 Royal Princess, Princess Cruises
 Ocean Princess, Princess Cruises
 Golden Princess, Princess Cruises
 Star Princess, Princess Cruises
 Diamond Princess, Princess Cruises
 Caribbean Princess, Princess Cruises
 Sapphire Princess, Princess Cruises
 Ruby Princess, Princess Cruises
 Stateendam, Holland America Line
 Grand Mistral, Iberocruceros (Costa Crociere)
 Fantasia, MSC
 Splendida, MSC

Mein Schiff 2, TUI Cruises
 Galaxy, Celebrity Cruises
 Silhouette, Celebrity Cruises
 Eclipse, Celebrity Cruises
 Equinox, Celebrity Cruises
 Riviera, Oceania Cruises
 Marina, Oceania Cruises
 Britannia, P&O Cruises

GERVASONI™

Gervasoni spa.
Viale del Lavoro, 88
33050 Pavia di Udine, Italy
ph +39 0432 656611
fax +39 0432 656612
info@gervasoni1882.com
www.gervasoni1882.com

Gervasoni spa is certified to UNI EN
ISO 9001:2008 Company Quality
System Certification, ISO 14001:2004
Environmental Certification and
OHSAS 18001:2012 Certification
for Health and Safety Management
Systems.



CATPROJECTS15