



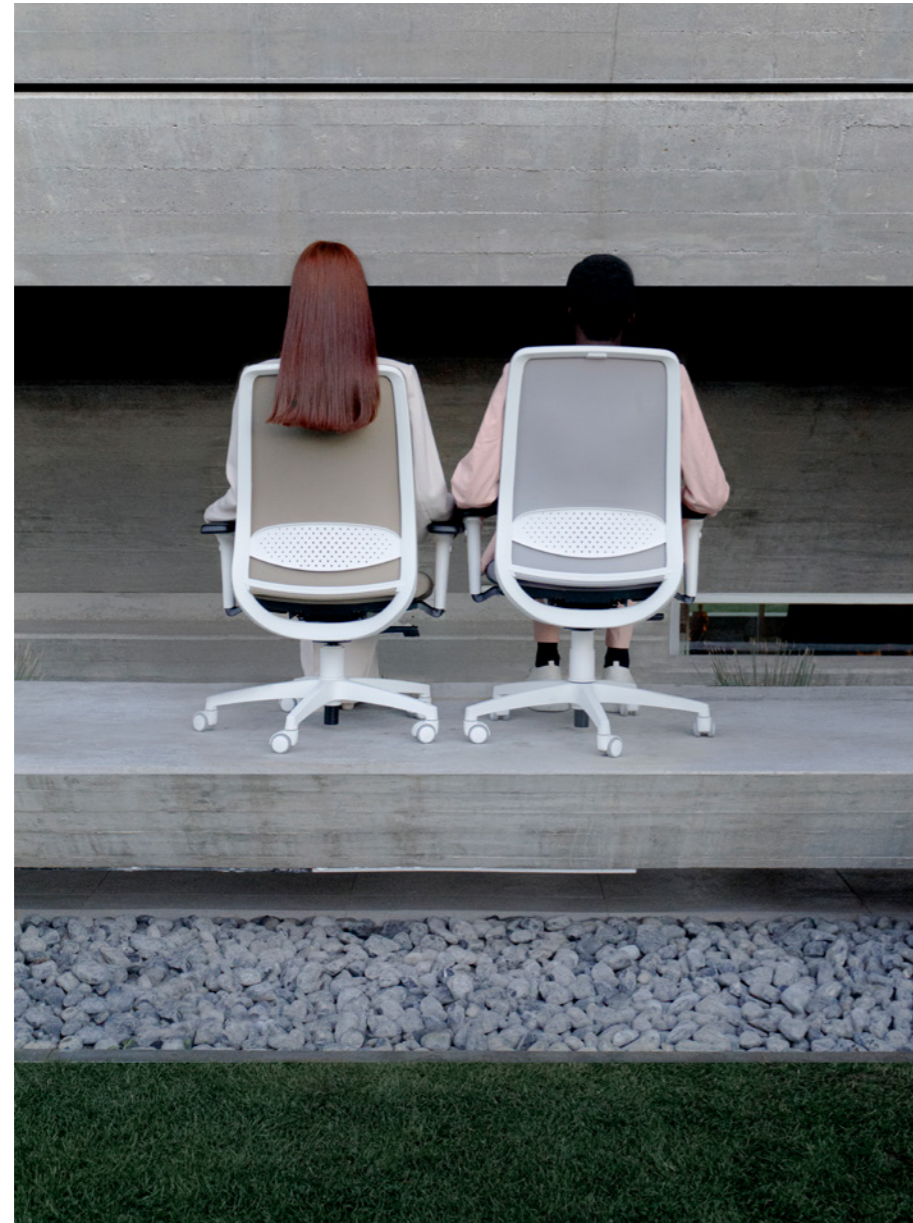
NEAT

Design R&D by Luxy

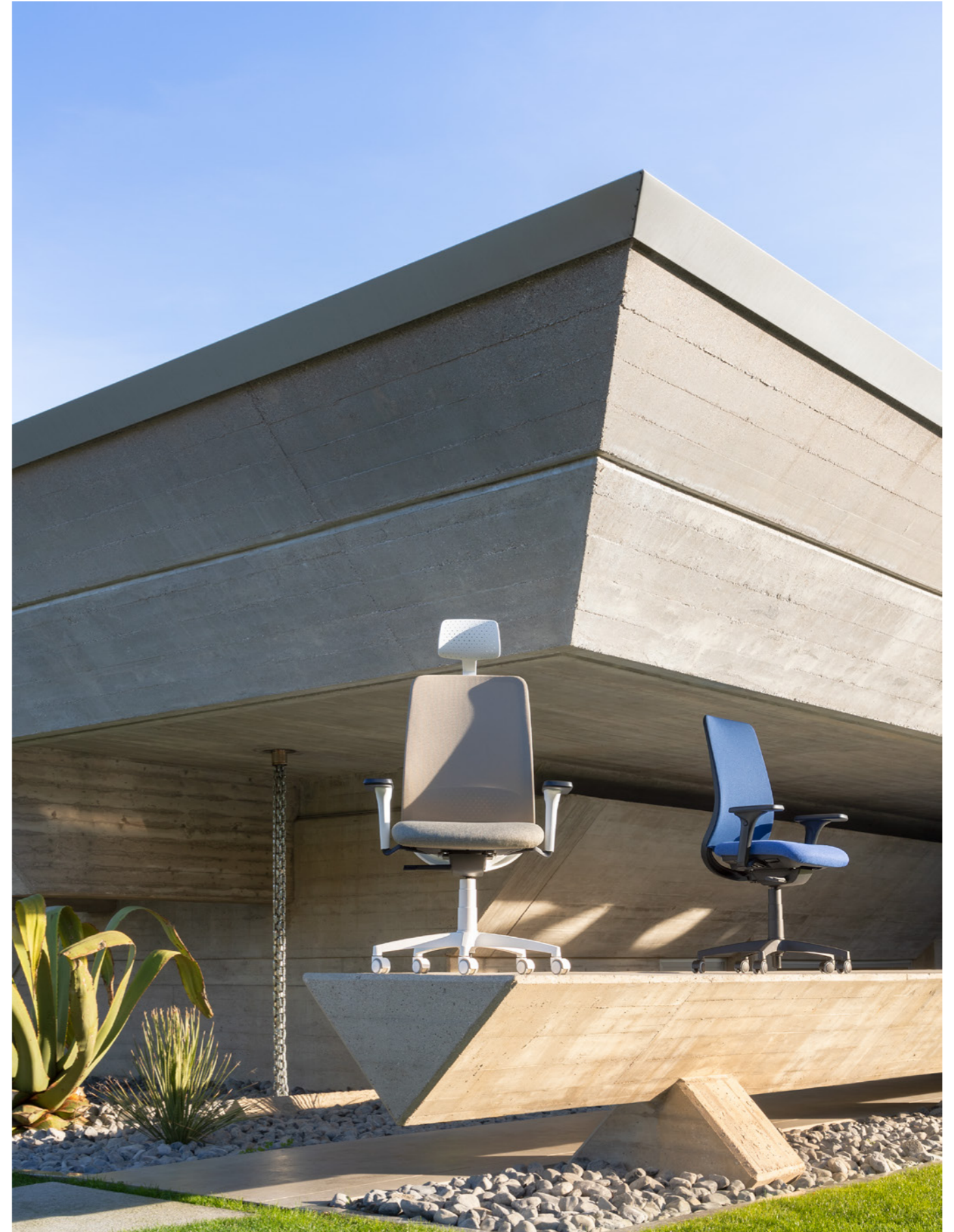
NEAT è una sedia pulita, ordinata e schietta. È estremamente flessibile grazie alla sua forma funzionale e pulita. Adattabile a qualsiasi tipo di ambiente ufficio, dal tradizionale al co-working. Sedia operativa, schienale alto, poggiatesta opzionale, supporto lombare regolabile, sincro con sedile scorrevole, braccioli 1D o 4D, base in nylon, ruote Ø 50mm. Plastica bianca o nera. Rete schienale disponibile in quattro diversi colori.

NEAT is a clean, tidy and frank chair. It is extremely flexible thanks to its clean and highly functional shape. Adaptable for any type of office environment, from traditional to co-working layout. Task chair, high backrest, optional headrest, adjustable lumbar support, synchro with sliding seat, 1D or 4D armrests, nylon base, Ø 50mm castors. White or black plastic. Backrest mesh available in four different colours.





NEAT
Modelli NE4,NE2 e NE5/ NE4, NE2 and NE5 model





NEAT

Modelli NE1, NE3 e NE4/ NE1, NE3 and NE4 model



NEAT
Modelli NE1, NE3 e NE4/ NE1, NE3 and NE4 model



NEAT

Design by R&D by Luxy
Operative/ Task chair

**NE1-NE2**

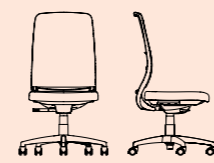
L 72 x W 68 x H 123-136 cm

**NE3-NE4**

L 72 x W 68 x H 115 cm

**NE5-NE6-NE7**

L 70 x W 68 x H 102-115 cm

**NE8-NE9**

L 68 x W 68 x H 102-115 cm

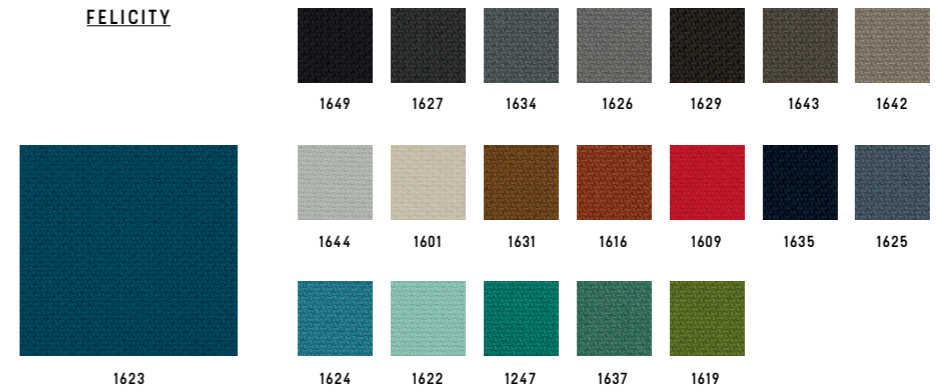
MATERIALI

MATERIALI/ MATERIALS



GABRIEL

FELICITY

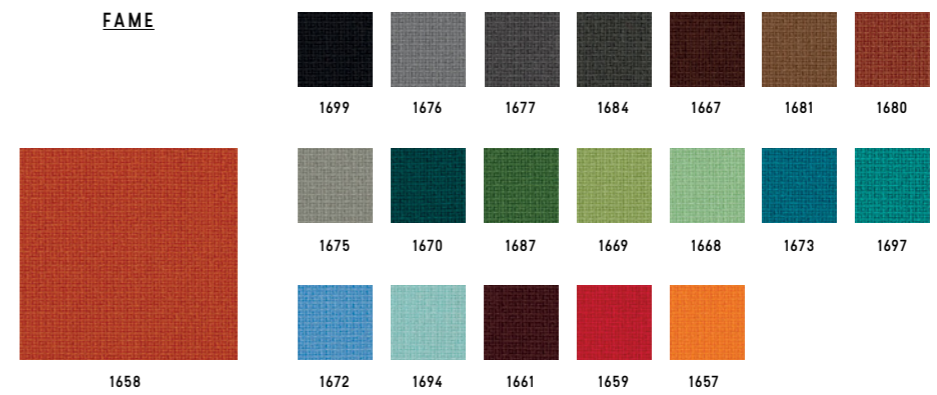


Categoria/ Category
Composizione/ Composition
Note/ Notes

C
100% polyester
100% recycled fabric



FAME



Categoria/ Category
Composizione/ Composition

D
95% New Zeland wool + 5% polyamide



BREEZE FUSION



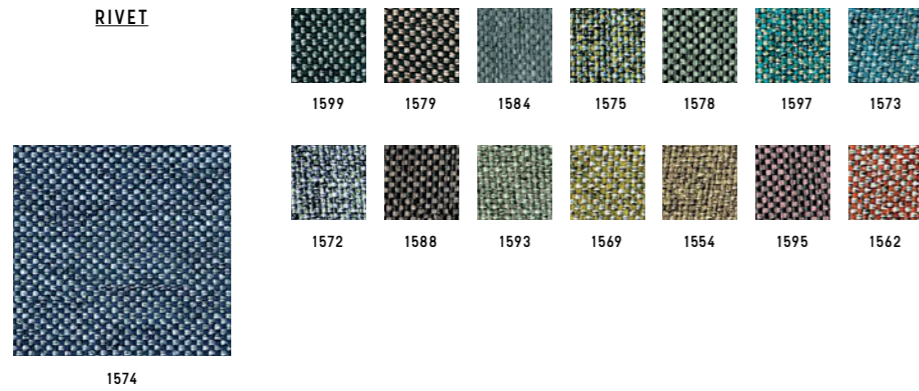
Categoria/ Category
Composizione/ Composition

K
88% New Zeland wool + 12% polyamide



CAMIRA

RIVET



Categoria/ Category **C**
 Composizione/ Composition 100% repreve
 Note/ Notes 100% recycled fabric



KVADRAT

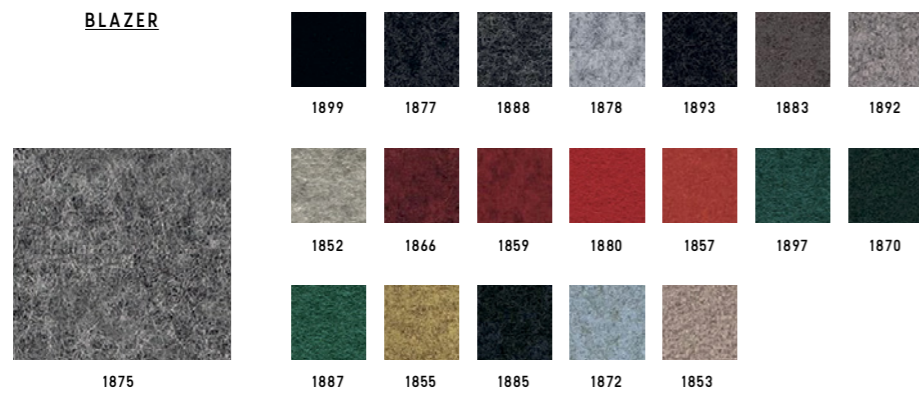
RELATE



Categoria/ Category **D**
 Composizione/ Composition 100% trevira CS
 Note/ Notes 100% recycled fabric



BLAZER



Categoria/ Category **K**
 Composizione/ Composition 100% virgin wool



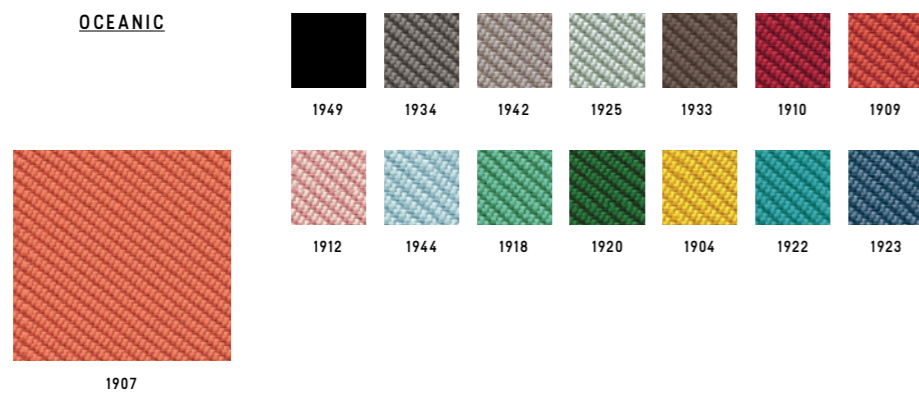
REMIX 3



Categoria/ Category **K**
 Composizione/ Composition 90% new wool worsted + 10% nylon



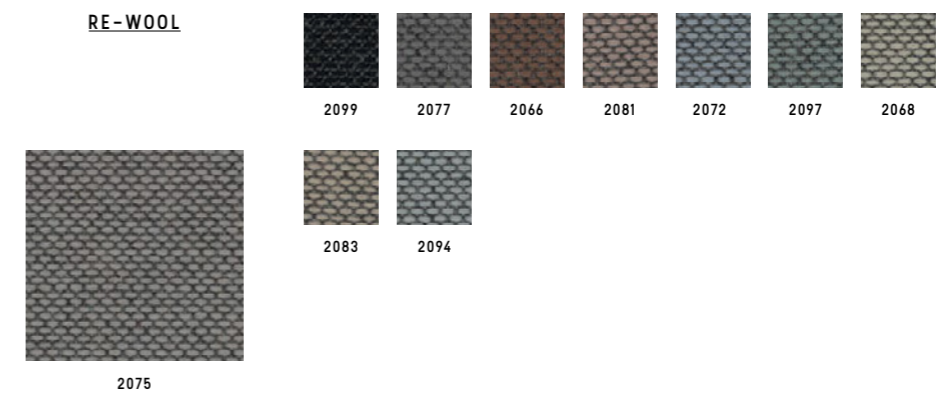
OCEANIC



Categoria/ Category **K**
 Composizione/ Composition 100% post-consumer recycled polyester,
 including 50% SEAQUAL yarn



RE-WOOL

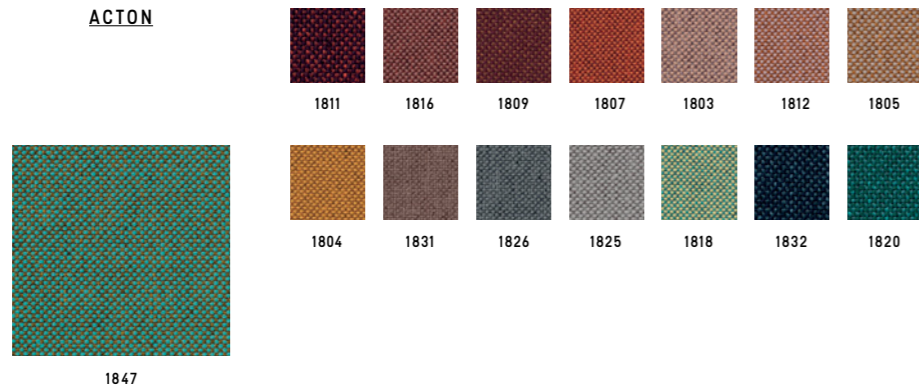


Categoria/ Category **K**
 Composizione/ Composition 45% recycled wool + 45% new wool worsted
 + 10% nylon



VESCOM

ACTON



Categoria/ Category
Composizione/ Composition

D
100% polyester



**LIMONTA
TRESIGALLO**



Categoria/ Category
Composizione/ Composition

K
22% acrylic, 22% virgin wool, 22% polyester, 13% cotton, 14% viscose, 17% linen



G.S.

SURROUND

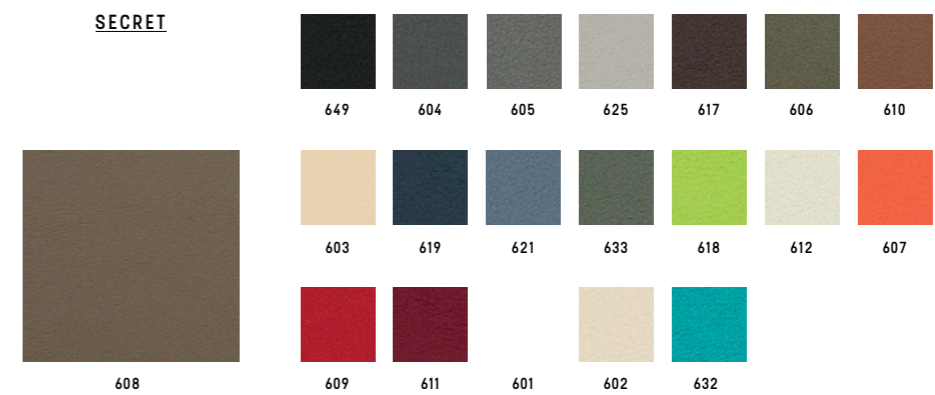


Categoria/ Category
Composizione/ Composition
Note/ Notes

B
87,5% polyvinylchloride (PVC) + 12,5% cotton
Antibacterial



SECRET

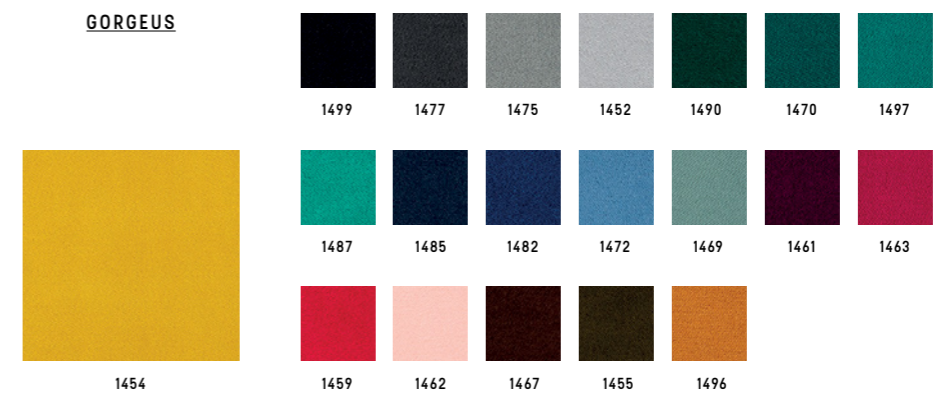


Categoria/ Category
Composizione/ Composition

C
76% polyvinylchloride (PVC) + 2% polyurethane (PU) + 22% polysulfone (PES)



GORGEUS



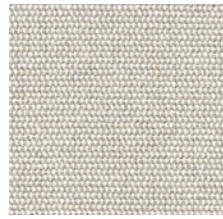
Categoria/ Category
Composizione/ Composition

D
100% polyester FR



CHIOCCARELLO

DISCO COEX



1402



Categoria/ Category
Composizione/ Composition

D
70% cotton + 20% acrylic + 5% viscose
5% linen, 0% formaldehyde



EXPO



1379

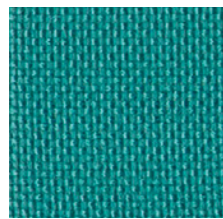


Categoria/ Category
Composizione/ Composition
Note/ Notes

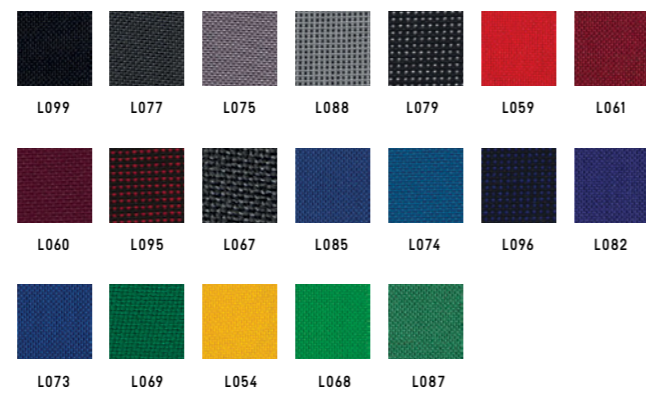
B
100% propitex Fr bacteriostatic
Bacteriostatic



MADRID



L097

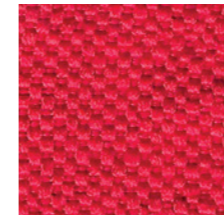


Categoria/ Category
Composizione/ Composition

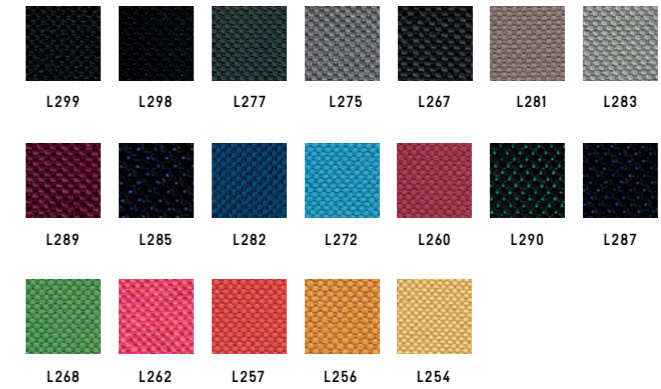
A
100% polypropilene FR



SALÒ



L259



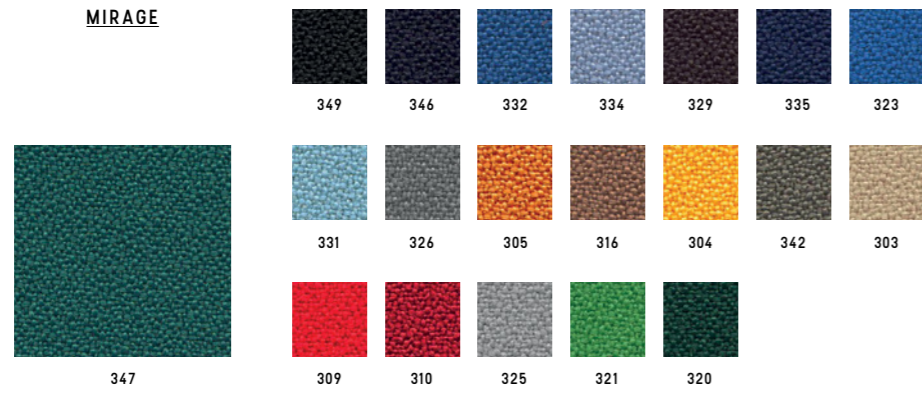
Categoria/ Category
Composizione/ Composition

B
100% polyester FR



PUGI

MIRAGE

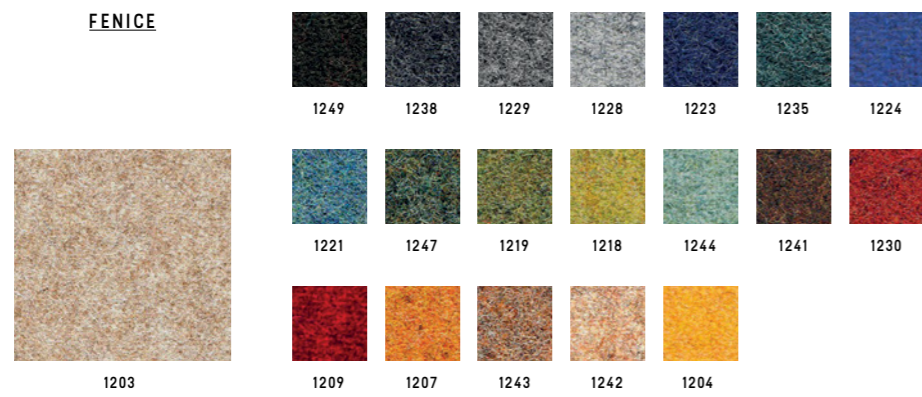


Categoria/ Category
Composizione/ Composition

B
100% polyester FR



FENICE



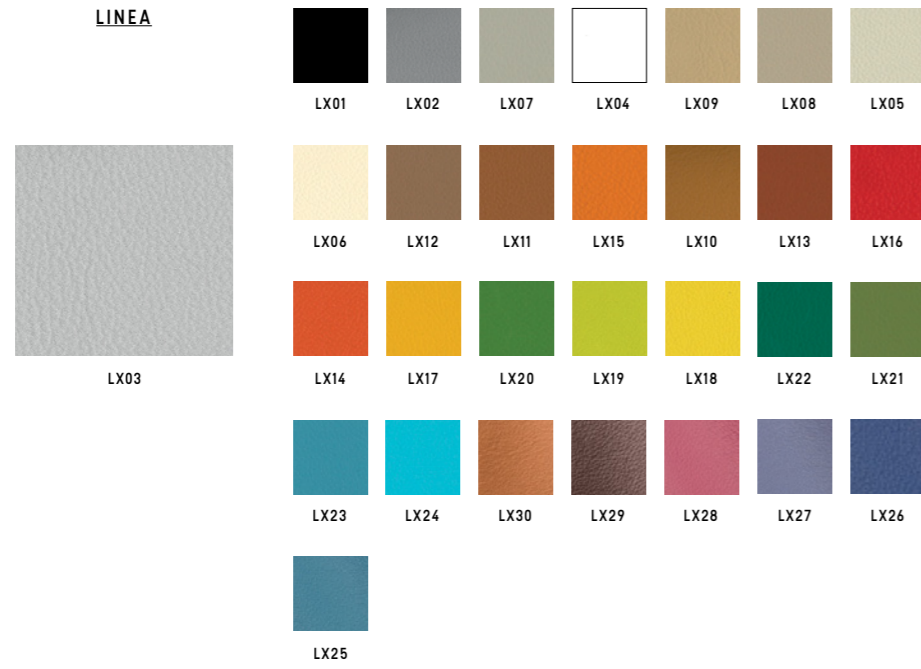
Categoria/ Category
Composizione/ Composition

C
75% wool + 25% polyamide



MASTROTTO

LINEA

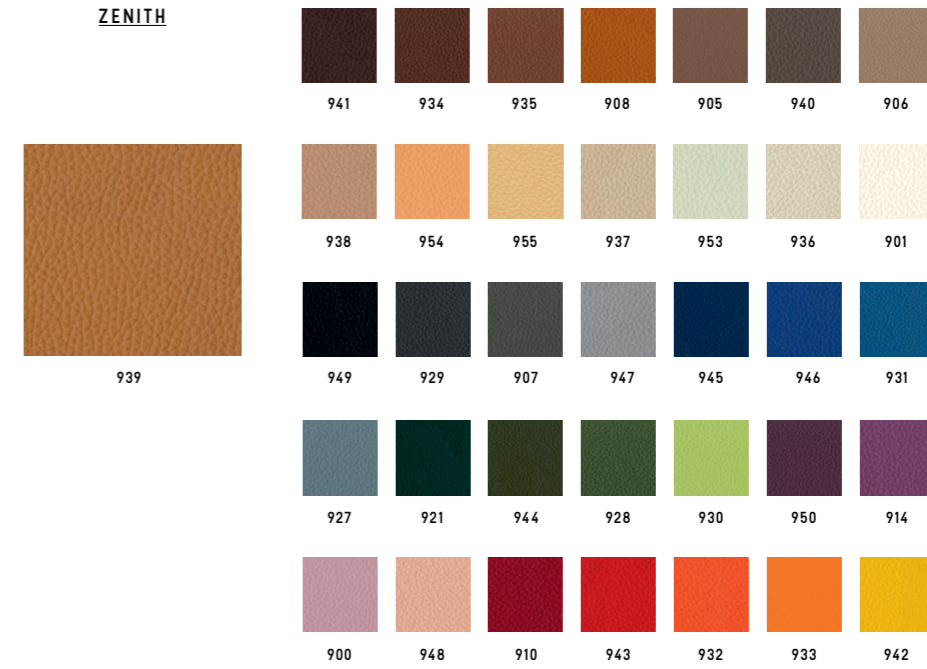


Categoria/ Category
Composizione/ Composition

TOP (pieno fiore)
Bovine leather



ZENITH



Categoria/ Category
Composizione/ Composition

TP
Bovine leather





RETI TRIDIMENSIONALE

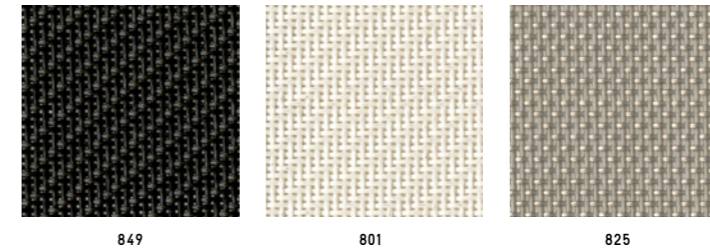
RHYTHM



Categoria/ Category **T**
 Composizione/ Composition **100% polyester**



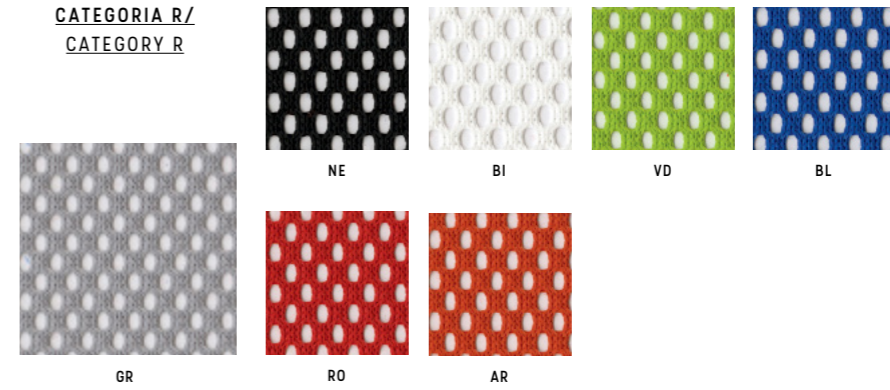
**CATEGORIA L/
 CATEGORY L**



Categoria/ Category **L**
 Composizione/ Composition **73% PVC + 27% poliestere/ 73% PVC + 27% polyester**
 849-801: Light, Nulite, Smartlight, Pop,
 825: Light, Nulite



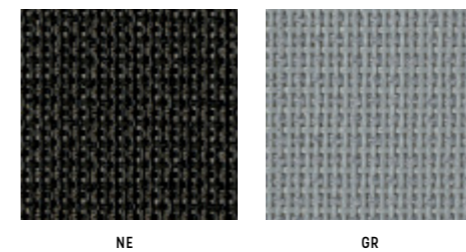
**CATEGORIA R/
 CATEGORY R**



Categoria/ Category **R**
 Composizione/ Composition **100% poliestere/ 100% polyester**
 Solo per Aire Jr, Post, Pop, Switch/
 Only for Aire Jr, Post, Pop, Switch



**CATEGORIA Z/
 CATEGORY Z**

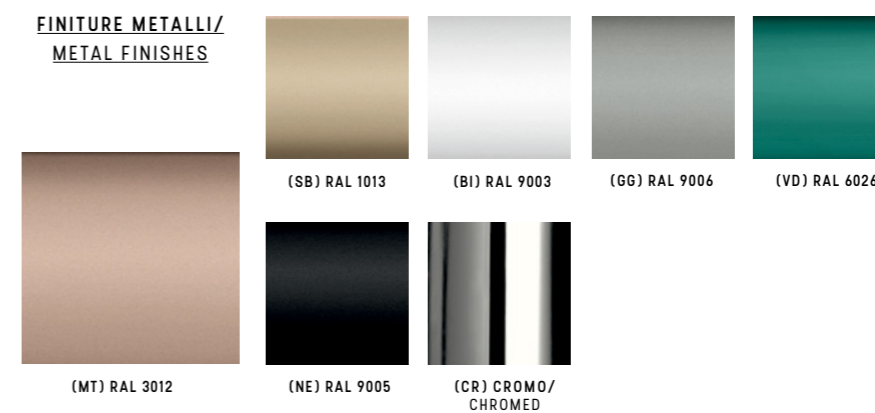


Categoria/ Category **Z**
 Composizione/ Composition **60% PVC + 40% poliestere/ 60% PVC + 40% polyester**
 Solo per Overtime Evo, Extralight/
 Only for Overtime Evo, Extralight





**FINITURE METALLI/
METAL FINISHES**



Categoria/ Category

FE

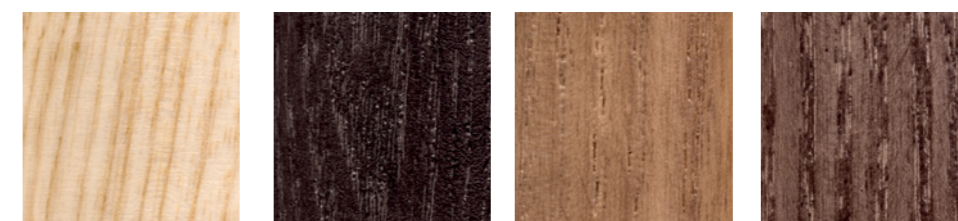
**PLASTICHE/
PLASTICS**



Categoria/ Category

PE

**LEGNO/
WOOD**



Faggio/ Beech

Rovere/ Oak

Noce/ Walnut

Wenge'

Standard

A progetto/ For customized projects

Categoria/ Category

LE

Composizione/ Composition

Legno massello di faggio in colore naturale/ Solid beech wood natural finish.
Legno massello di rovere con verniciatura di tipo acrilico in vari colori/ Solid oak wood natural finishes.

