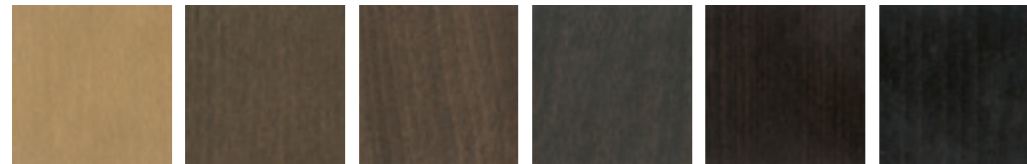


Finishes.

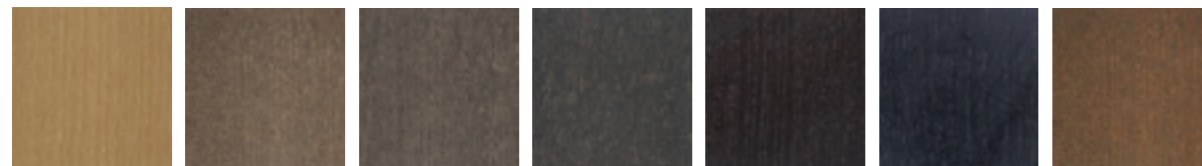
Indoor

FAGGIO / BEECH



BV Beige \ Beige UD Biscotto \ Biscuit TM Moka \ Moka TZ Grigio plumbeo \ Dark grey TT Wengé \ Wengé 15 Carbone \ Carbon

FRASSINO / ASH



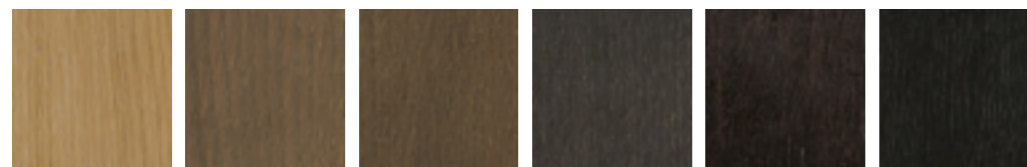
SG Beige \ Beige SC Biscotto \ Biscuit HJ Moka \ Moka HK Grigio plumbeo \ Dark grey HL Wengé \ Wengé HP Carbone \ Carbon SN Noce \ Walnut

FRASSINO TINTO COLORI SPECIALI / ASH WOOD STAINED SPECIAL COLORS



White Cherry Olive green Bluette Black

ROVERE / OAK



UH Beige \ Beige UC Biscotto \ Biscuit TD Moka \ Moka TA Grigio plumbeo \ Dark grey TY Wengé \ Wengé RQ Carbone \ Carbon

LACCATI OPACHI / MATT LACQUERED



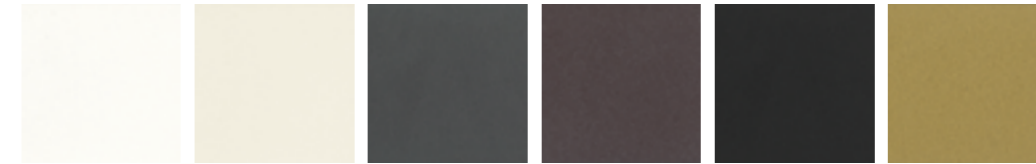
13 Bianco \ White HB Rubino \ Ruby red 08 Nero \ Black

ESSENZE SPECIALI / SPECIAL ESSENCE



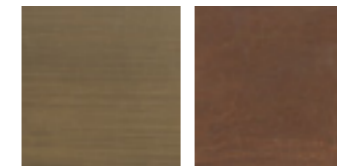
ES Noce Canaletto \ Canaletto walnut EK Mogano tinto noce \ Walnut stained mahogany

METALLI VERNICIATI / LACQUERED METALS



Bianco goffrato \ White embossed Bianco perla goffrato \ Pearl white embossed Antracite goffrato \ Anthracite embossed Aval goffrato \ Aval embossed Nero goffrato \ Black embossed Oro \ Gold

METALLI SPECIALI / SPECIAL METALS



Ottone brunito \ Bronzed brass Corten \ Corten

INOX / INOX



Satinato \ Satin

METALLI CROMATI / CHROME METALS



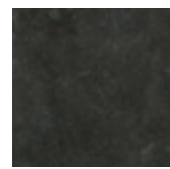
Cromato \ Chrome Cromo nero \ Black chrome

QUARZO RESINATO / RESINATED QUARTZ



Antracite \ Anthracite Light Grey \ Light Grey

GRÈS PORCELLANATO / LAMINATED PORCELAIN



Ossido nero \
Black oxide

HPL / HPL



Antracite \ Anthracite

CERAMICA / CERAMIC



Cioccolato \
Chocolate Pesca \ Peach Grigio sabbia \
Sand grey

VETRO TEMPERATO / TEMPERED GLASS



Float trasparente \
Transparent float Bronzato \ Bronzed Retro verniciato nero \
Black back-painted

MARMI / MARBLES



Bianco Carrara lucido \
Glossy White Carrara Bianco Carrara opaco \
Matt White Carrara Fior Di Pesco Camico \
Fior Di Pesco Camico Travertino Romano \
Travertino Romano Dark Emperador \
Dark Emperador Grigio Camico \
Grigio Camico Nero Marquina \
Nero Marquina

CORDE / ROPES



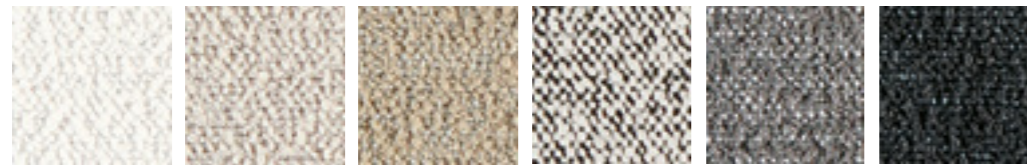
A6C F7E - F8F
Cuoio \ Hide leather Gassa testa di moro \
Gassa dark brown

CORDA NAUTICA / NAUTICAL ROPE

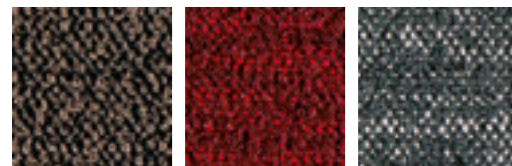


F7F
Canapa \ Hemp

AIDA (CAT. 1) - 68% PL, 32% PP



A2D Bianco A2E Beige A2F Sabbia A2G Pepe A2H Grigio A2I Antracite

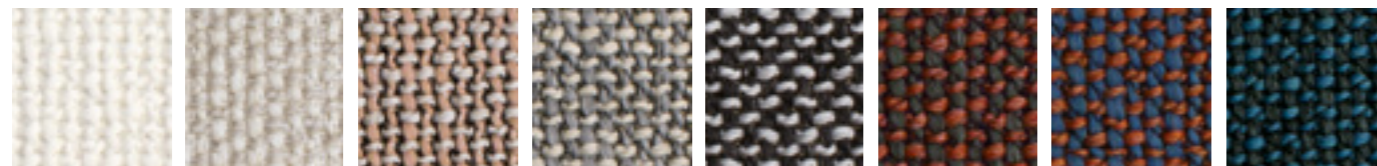


A2J Tronco A2K Rubino A2L Petrolio

Martindale : >135.000 cicli/rubs
 Light fastness : >6
 Fire tests : IIM-UNI 9175 / Classe I-UNI 9177 / EN 1021 Part 1/2 /
 DIN 4102-B1 / NFPA 260 Class 1 / NF D-60 013-A18 / CAL TB 117:2013 /
 IMO MED-FTP 307 Part 8 / Önorm B 3825
 Main characteristics : IMO-MED / Sound absorbent



Technical features: 
 Care: 

ARTE (CAT. 1) - 68% PC, 16% PL, 16% CO

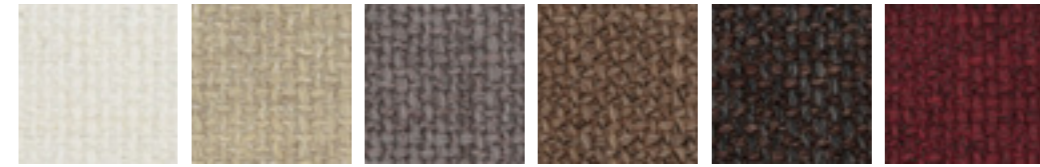


A1D Bianco A1J Beige A1E Rosa A1F Grigio chiaro A1H Pepe A1G Verde mattone A1L Blu arancio A1K Blu oltremare

Martindale : 35.000 cicli/rubs
 Light fastness : 5
 Fire tests : CAL TB 117:2013 / BS 5852 Cigarette / BS 5852 Match / EN 1021 Part 1/2

Technical features: 
 Care: 

ALBA (CAT. 1) - 45% PC, 33% PL, 22% WO



D6B Burro D6C Beige D6D Tortora D6E Tronco D6F Tabacco D6G Rubino



D6H Blue D6I Petrolio D6J Light grey D6K Argento D6L Antracite D6M Nero

Martindale : 40.000 cicli/rubs
 Light fastness : 5
 Fire tests : CAL TB 117:2013 / BS 5852 Cigarette

Technical features: 
 Care: 

BETTY (CAT. 2) - 33% PL, 25% PC, 23% VI, 10% CO, 9% LI



A9K Bianco A9L Beige A9M Grigio chiaro A9N Nocciola A9P Antracite A9Q Nero

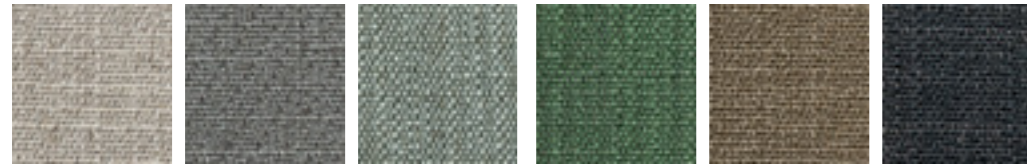
Martindale : 50.000 cicli/rubs
 Light fastness : 5/6
 Fire tests : CAL TB 117:2013 / BS 5852 Cigarette

Technical features: 
 Care: 

BALDO (CAT. 2) - 34% VI, 31% CO, 15% LI, 13% PC, 7% PL



B7A Bianco B7B Beige B7C Avorio B7D Tortora B7E Odra B7F Rosa



B7G Grigio chiaro B7H Grigio scuro B7I Light blue B7J Bosco B7K Nocciola B7L Antracite

Martindale : 25.000 cicli/rubs
 Light fastness : 5/6
 Fire tests : CAL TB 117:2013 / BS 5852 Cigarette

Technical features:

Care:

BLISS (CAT. 2) - 67% VI, 33% LI

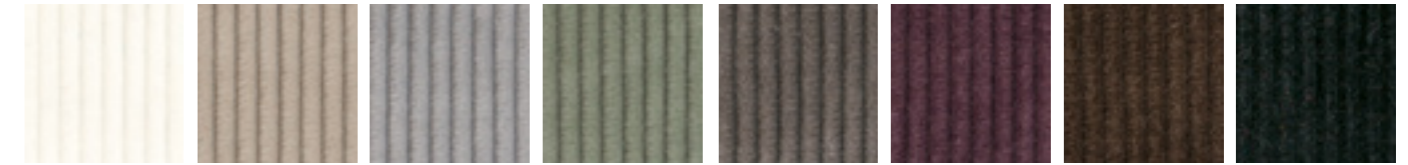


H1X Bianco H1Y Panna H1Z Beige H1W Nocciola

Martindale : > 20.000 cicli/rubs
 Light fastness : 4/5

Care:

BRERA (CAT. 2) - 100% CO



A4D Bianco A4E Beige A4J Grigio A4G Salvia A4K Tortora scuro A4I Lilla A4F Tronco A4H Antracite

Martindale : 40.000 cicli/rubs
 Light fastness : 4/5
 Fire tests : CAL TB 117:2013 / BS 5852 Cigarette / BS 5852 March

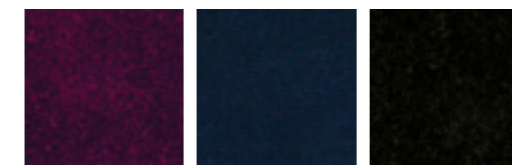
Technical features:

Care:

BRIDGE (CAT. 2) - 100% TREVIRA® CS



A3D Bianco A3E Panna A3F Grigio A3G Antracite A3H Salvia A3I Mattone



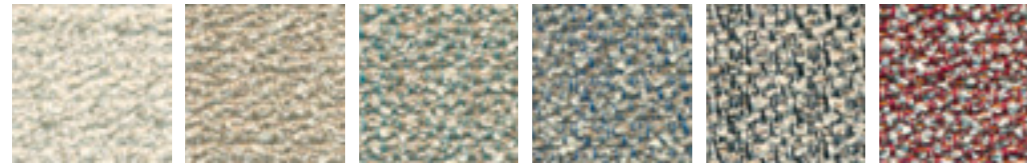
A3J Prugna A3K Blu oltremare A3L Nero

Martindale : 100.000 cicli/rubs
 Light fastness : ≥5
 Fire tests : CAL TB 117:2013 / UNI 8456 - 9174 classe 1 / UNI 9175 Classe 11M / EN 1021 Part 1/2 / BS 5852 CRIB 5 / DIN 4102 - B1 / IMO FTP CODE 2010 NF P 92 503-507 M1 / UNI EN 13773:2004 classe 1 / NFPA 701:2015
 Main characteristics : Sound absorbent

Technical features:

Care:

CALLA (CAT. 3) - 5% CO, 25% VI, 13% LI, 15% WO, 25% PL, 15% PC, 2% PA



A8L Panna A8M Sabbia A8N Smeraldo A8P Celeste A8Q Pepe A8R Rubino

Martindale : 45.000 cicli/rubs
 Light fastness : 4/5
 Fire tests : CAL TB 117:2013 / BS 5852 Cigarette / BS 5852 Match

Technical features:

Care:

CELIA (CAT. 3) - 68% PL FLAME RETARDANT, 32% PL FR



D7A Avorio D7B Nude D7C Argilla D7D Testa di moro D7E Arancio D7F Ruggine D7G Fragola D7H Prugna



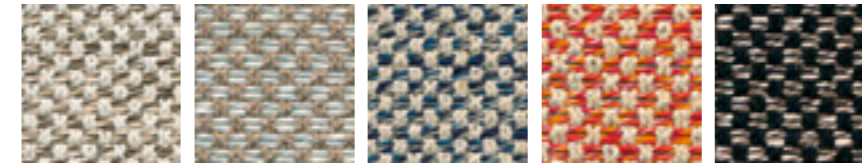
D7I Oro D7J Salvia D7K Bosco D7L Ottanio D7M Bluette D7N Grigio D7P Nero

Martindale : 48.000 cicli/rubs
 Fire tests: CAL TB 117:2013 / B1 DIN 4102, Part 1 / BS 5852 Cigarette / BS 7176 / M1 NFP902-503-504-505 / IMO 8 Upholstery
 Sustainability: Yarns certified Oeko-tex / Greenguard gold certification
 Main characteristics: Stain repellent finish

Technical features:

Care:

CIELO (CAT. 3) - 47% CO, 18% LI, 35% VI



A6H Panna A6K Sabbia A6I Blu oltremare A6L Mattone A6J Tronco

Martindale : 50.000 cicli/rubs
 Light fastness : 4/5
 Fire tests : BS 5852 Cigarette / BS 5852 Match / CAL TB 117:2013

Technical features:

Care:

CORE (CAT. 3) - 59% PL, 25% PC, 16% CO

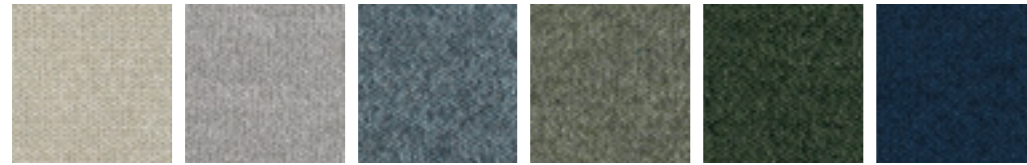


E1T Ghiaccio E1W Paglia E1Y Senape E1Z Marrone chiaro E1V Talpa E1X Testa di moro E1U Fieno

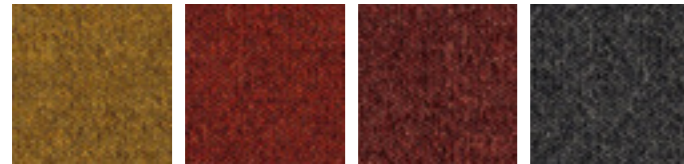
Martindale : 30.000 cicli/rubs
 Light fastness : 5

Care:

CORTINA (CAT. 3) - 100% PES FR



A9E Beige A9F Grigio A9D Avio A9B Salvia A9A Bosco A9C Blu oltremare



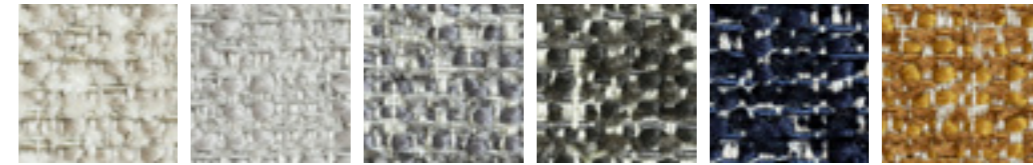
A9H Senape A9J Mattone A9I Terracotta A9G Antracite

Martindale : 50.000 cicli/rubs
 Light fastness : 6/7
 Fire tests: BS 5852 Cigarette / BS 5852 Match / EN 1021 Part 1/2 /
 BS 7176 Low hazard / CAL TB117:2013 / NFPA 260 /
 IMO Annex 1 Part 8 / UNI 9175 1IM / NFD 60 013 /
 DIN 4102 B2
 Sustainability: Standard 100 by Oeko-tex
 Main characteristics: Reach approved chemicals and dyes / Biocide and PFCs free /
 Zero-waste production / Acoustic certificate: EN ISO 354

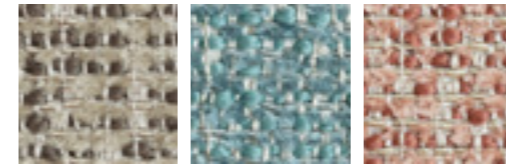
Technical features:

Care:

CROSS (CAT. 3) - 48% PL, 21% PC, 15% CO, 11% VI, 5% LI



A2M Avorio A2N Perla A2P Grigio chiaro A2Q Antracite A2R Blue A2S Oera



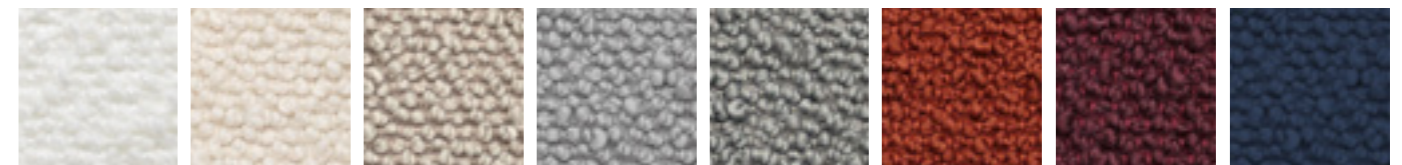
A2T Salvia A2U Light blue A2V Rosa

Martindale : 50.000 cicli/rubs
 Light fastness : 5/6
 Fire tests: BS 5852 Cigarette / CAL TB 117:2013

Technical features:

Care:

DAFNE (CAT. 4) - 100% TREVIRA® CS



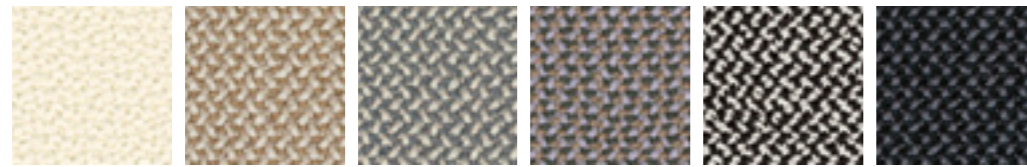
B2A Bianco B2B Panna B2C Sabbia B2F Grigio B2G Antracite B2D Mattone B2H Rubino B2E Blu oltremare

Martindale : 170.000 cicli/rubs
 Light fastness : 5
 Fire tests: Classe 1-IM / BS 5852 Cigarette / BS 5852 Match / CAL TB 117:2013 /
 UNI 9177 - Classe 1 / EN 1021 Part 1/2 / DIN 4102 B1 /
 IMO MSC 307(88) Annex 1 Part 7-8 / NFP 92-503-507 M1

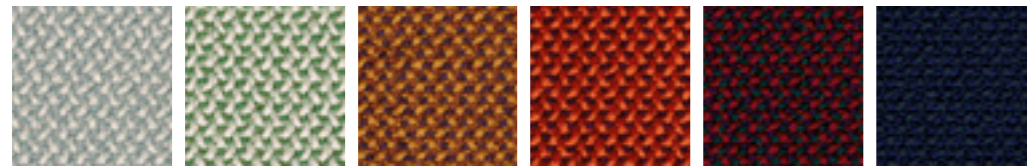
Technical features:

Care:

DALÍ (CAT. 4) - 95% WV, 5% PA



C6U Bianco C6V Sabbia C6K Grigio C6Q Fango C6M Pepe C6L Antracite



C6I Grigio chiaro C6N Salvia C6H Senape C6T Arancione C6P Rubino C6S Blue navy

Martindale : 100.000 cicli/rubs

Light fastness : ≥ 5

Fire tests: CAL TB 117:2013 / EN 1021 Part 1/2 / UNI 9175 IIM / ÖNORM B1-Q1 / IMO 2014-90-EU Marine Equipment Directive (MED)

Main characteristics: Sound absorbent / Natural, renewable material /

RAL-UZ 117 Attachment 2+3 / IWTO Guidelines for Wool Sheep Welfare /

FR-free / AB 2998 (US export standard) / REACH (EU export standard) / Naturally stain resistant

Technical features:

Care:

DELTA (CAT. 4) - 50% CO, 33% VI, 17% LI



B1C Panna melange B1D Tronco melange B1E Antracite melange B1F Blu mattone

Martindale : 35.000 cicli/rubs

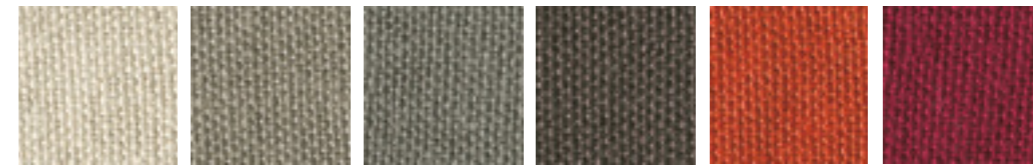
Light fastness : 4/5

Fire tests: BS 5852 Cigarette / BS 5852 Match / CAL TB 117:2013

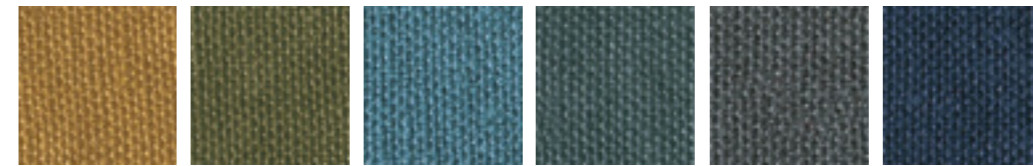
Technical features:

Care:

DOLINO (CAT. 4) - 100% LI



C8D Sabbia C8F Antracite C9U Tortora C8K Grigio C9M Arancione C9G Rosso



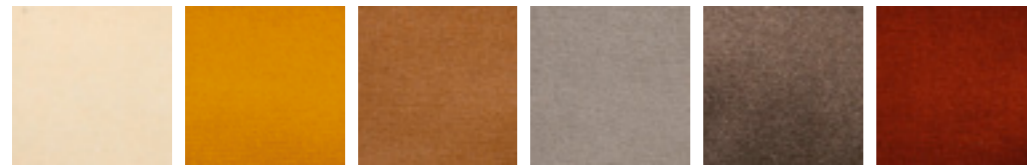
C8M Senape C8P Verde oliva S2C Celeste C8S Denim C9V Grigio scuro C8Y Blu scuro

Martindale : > 25.000 cicli/rubs

Light fastness : 4/5

Care:

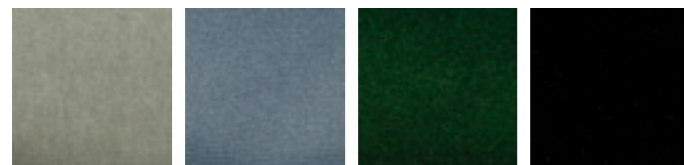
DORO (CAT. 4) - 100% CO



H2H Crema H3E Ocra H3D Argilla H3C Sabbia H2J Nocciola H3F Ruggine



H3J Grigio H3H Lilla H3G Rosso imperiale H3I Prugna H2N Notte H2L Antracite

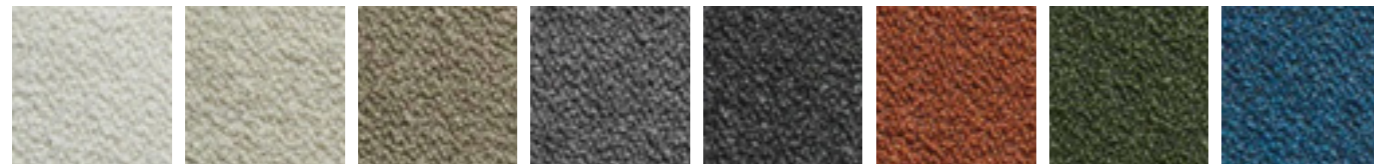


H3L Salvia H3A Celeste H3M Bosco H3B Nero

Martindale : 100.000 cicli/rubs

Care:

DOLLY - 33% VI, 29% PC, 15% WO, 8% CO, 7% PL, 6% LI, 1% PA, 1%EA



Q2A Panna Q2B Avorio Q2C Tortora Q2E Grigio Q2H Antracite Q2D Mattone Q2G Bosco Q2F Petrolio

Martindale : 60.000 cicli/rubs
Fire tests: BS 5852 Cigarette / BS 5852 Match / EN 1021 Part 1/2 / CAL TB117:2013

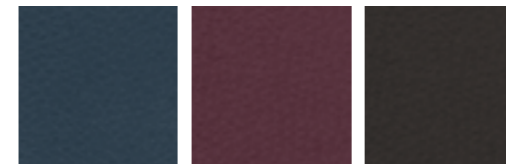
Technical features:

Care:

FLAMINGO B (CAT. 2) - 10% CO, 20% PES, 1% PU, 69% PVC



Q1D Beige Q1C Ecrù Q1F Nocciola Q1A Tortora scuro Q1E Grigio scuro Q1G Mogano



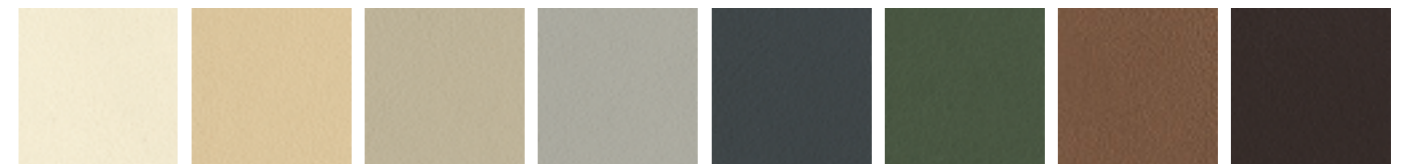
Q1I Blu notte Q1H Bordeaux Q1B Nero

Martindale : 100.000 cicli/rubs
Light fastness : 7
Fire tests: UNI 9175 IIM / IMOMED / IMO-FTP / CAL TB 117:2013 / EN 1021 Part 1/2
Main characteristics: Phtalate free / Antibacterial

Technical features:

Care:

FALABELLA (CAT. 3) - 63% PU, 29% CO, 8% PES



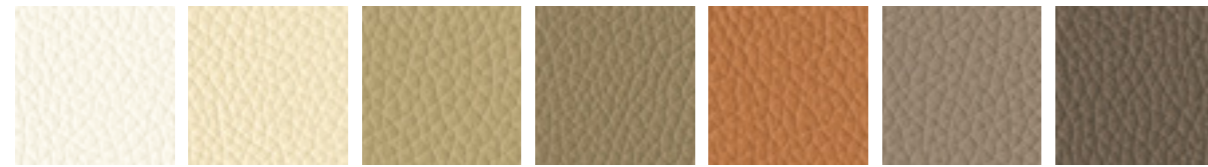
KN Panna KP Beige PM Tortora chiaro PF Grigio chiaro PG Antracite YA Verde oliva KV Bronzo KU Marrone testa di moro

Martindale : 150.000 cicli/rubs
Light fastness : 5/6
Fire tests: UNI 9175 IIM / EN 1021 Part 1/2 / BS 5852 CRIB 5 / BS 5852 Cigarette / BS 5852 Match / IMO FTP CODE 2010 / CAL TB 117:2013 / ÖNORM B 3825
Main characteristics: Waterproof / Resistance to mould and bacteria / Phthalates free

Technical features:

Care:

GEO (CAT. A) - PELLE / LEATHER



P2A Panna
P1B Grano
P1D Beige scuro
P1K Nocciola
P2C Ruggine
P2D Tortora
P1M Tronco



P1T Terracotta
P1V Rosso
P1W Bordeaux
P1N Noce
P2N Melanzana
P2G Grigio scuro
P2H Marrone scuro



P2Q Celeste
P2S Blu cadetto
P2T Blu prussia
P3B Verde chiaro
P3C Verde
P2F Nero

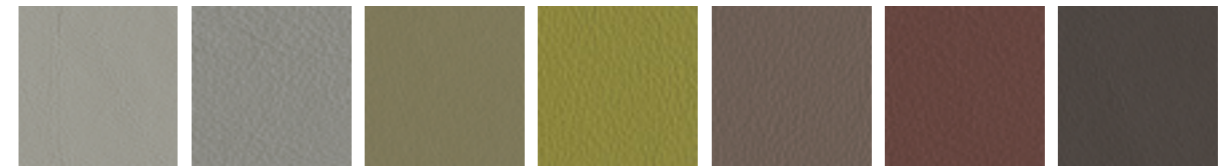
Raw hide: Bovino europeo \ European bovine
Surface: Fiore corretto \ Corrected grain
Thickness: 0,9 - 1,1 mm
Light fastness: ≥ 5
Fire tests: EN 1021 Part 1/2 / BS 5852 Cigarette / BS 5852 Match /
IMO MED MSC.307 / CAL TB 117:2013

Technical features : 

GALEA (CAT. B) - PELLE / LEATHER



C4I Bianco
C4Q Beige
C4T Tortora chiaro
C4U Tortora
C4P Zucca
C4H Rosso scuro
C4V Dattero



C4J Grigio chiaro
C4R Grigio
C4N Verde mimetico
C4W Verde muschio
C4S Marmotta
C4K Castagna
C4L Marrone scuro



C4G Bluette
C4M Blu
C4F Nero

Raw hide: Bovino europeo \ European bovine
Surface: Fiore corretto \ Corrected grain
Thickness: 1,0 - 1,2 mm
Light fastness: ≥ 5
Fire tests: EN 1021 Part 1/2 / BS 5852 Cigarette / BS 5852 Match /
IMO MED MSC.307 / CAL TB 117:2013

Technical features : 

NINA (CAT. B) - PELLE / LEATHER



KK Naturale XZ Nocciola KL Marrone KJ Nero

Raw hide: Bovino europeo \ European bovine
Surface: Pieno fiore \ Full grain
Thickness: 0,9 - 1,0 mm

NABUK (CAT. C) - PELLE / LEATHER

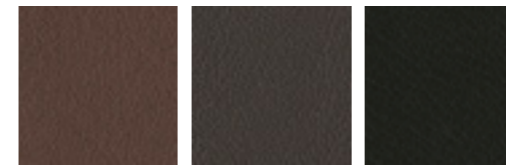


E2T Tortora E2U Marmotta E2R Avena E2Q Nocciola E2S Wengé E2V Blu

Raw hide: Bovino europeo \ European bovine
Surface: Nabuk idrorepellente \ Water-repellent Nabuk
Thickness: 1,1 - 1,3 mm
Light fastness: ≥ 3
Fire tests: EN 1021 Parr 1/2 / BS 5852 Cigarette / BS 5852 Match / IMO MED MSC.307 / CAL TB 117:2013

Technical features:

NATURE (CAT. C) - PELLE / LEATHER



C9Y Marrone C9Z Testa di moro C9X Antracite

Raw hide: Bovino europeo \ European bovine
Surface: Anilina pieno fiore \ Aniline full grain
Thickness: 1,0 - 1,2 mm
Light fastness: ≥ 2/3
Fire tests: EN 1021 Parr 1/2 / BS 5852 Cigarette / BS 5852 Match / CAL TB 117:2013 / NFPA 260/UFAC

Technical features:

CUOINETTO / HIDE LEATHER



K1F Sabbia K1B Fango K1C Terracotta BL Burgan 1S Grigio



IZ Cognac K1D Marrone scuro BM Nero

Raw hide: Bovino europeo \ European bovine
Surface: Fiore liscio \ Smooth grain
Thickness: 1,8 mm

Outdoor

ESSENZE SPECIALI / SPECIAL ESSENCES ☁



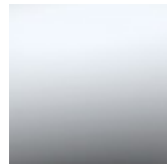
SU Frassino waterproof \ Waterproof ash
 EU Iroko \ Iroko
 EK Mogano tinto noce \ Walnut stained mahogany

METALLI VERNICIATI / LACQUERED METALS ☁



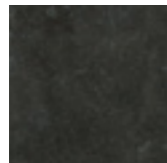
Bianco goffrato \ White embossed
 Bianco perla goffrato \ Pearl white embossed
 Antracite goffrato \ Anthracite embossed
 Aval goffrato \ Aval embossed
 Nero goffrato \ Black embossed

INOX / INOX ☁ ⚓



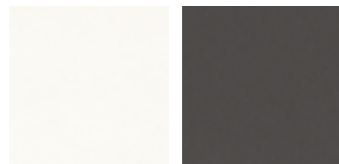
Lucido AISI 316 \ AISI 316 polish

GRÈS PORCELLANATO / LAMINATED PORCELAIN ☁



Ossido nero \ Black oxide

HPL / HPL ☁



Bianco \ White
 Antracite \ Anthracite

CERAMICA / CERAMIC ☁



Cioccolato \ Chocolate
 Pesca \ Peach
 Grigio sabbia \ Sand grey

VETRO TEMPERATO / TEMPERED GLASS ☁



Bronzato \ Bronzed

PIETRE / STONES ☁



Pietra naturale light grey \ Light grey natural stone



Adatto per uso esterno \ Suitable for outdoor use



Adatto per uso esterno in ambiente salino \ Suitable for outdoor use in salty environments



Articolo ignifugo \ Flame retardant

CORDINI / ROPES ☁️



K1
Sintetico moka \ Moka syntetic

CORDINI / ROPES ☁️ ⚓



J7 PVC bianco \ PVC white
G2 PVC antracite \ PVC anthracite
B1A Gassa beige \ Gassa beige
F7E - F8F Gassa testa di moro \ Gassa dark brown

CORDA NAUTICA / NAUTICAL ROPE ☁️ ⚓



F7F - F9B Canapa \ Hemp
D4B Antracite \ Anthracite
D5B Blu navy \ Blue navy

FETTUCCIA / RIBBON ☁️ ⚓



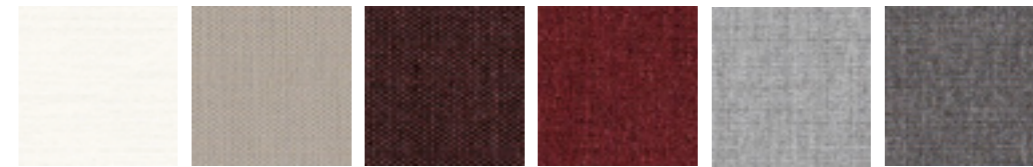
S4E Fly grigio \ Fly grey
A7A Gassa beige \ Gassa beige

TRECCIA IMBOTTITA / PADDED BRAID ☁️ ⚓



S2F Antracite \ Anthracite

SHELL (CAT. 1) - 100% Solution Dyed Outdoor Acrylic



E1A Bianco
E1R Sabbia
E2D Tronco
E2C Mattone
E2A Grigio
E2B Antracite



E1L Grigio celeste
E1G Celeste
E2G Verde muschio
E2H Bosco
E2E Prugna
E2F Blue navy

Martindale : 30.000 cicli/rubs

Light fastness : 4/5

Fire tests : CAL TB 117:2013 / NFPA 260 / NF EN 1021-1

Sustainability : Standard 100 by Oeko-tex / Greenguard gold certification

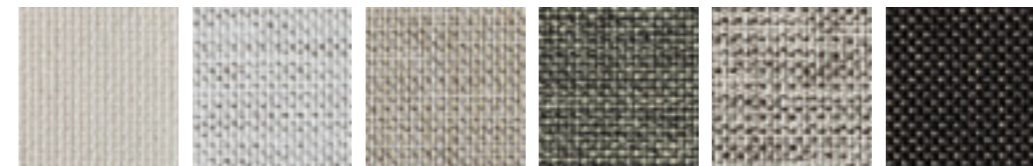
Main characteristics : Bleach Cleanable / Breathable comfort / Mold - mildew resistant /

Water & stain resistant / Sun protection / UV - Fade resistant / Landfill free

Technical features: ☁️ ⚓

Care: 🧺 🚫🔥 🚫🧴 🚫🧼 🚫🧊 🚫🧯

SEAL (CAT. 2) - 100% PP



A1M Bianco
A1N Bianco melange
A1P Beige
A1Q Antracite
A1R Grigio melange
A1S Nero

Martindale : 40.000 cicli/rubs

Light fastness : 7/8

Fire tests : BS 5852 Cigarette / CAL TB 117:2013

Sustainability : Standard 100 by Oeko-tex / Greenguard gold certification

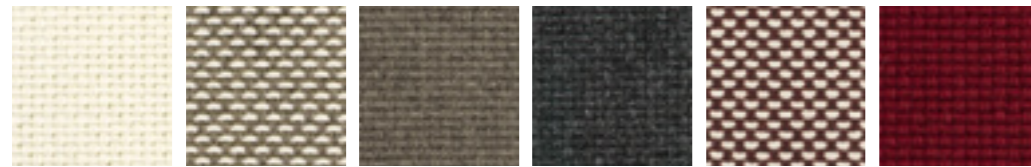
Main characteristics : Recyclable / Antibacterial / Anallergic / Anti mould, fungus and moths /

Very easy to wash, 40C / Quick dry / Resistant to sea water and chlorinated water

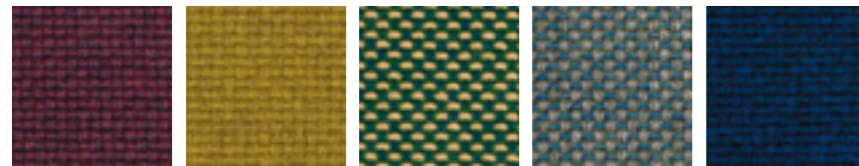
Technical features: ☁️ ⚓

Care: 🧺 🚫🔥 🚫🧴 🚫🧼 🚫🧊 🚫🧯

SKIPPER (CAT. 3) - 100% Solution Dyed Outdoor Acrylic



B4A Panna
B4B Panna grigio
B4C Grigio
B4D Antracite
B4E Ribes
B4F Rubino



B4G Prugna
B4H Senape
B4I Verde
B4J Grigio celeste
B4K Blue navy

Martindale : 20.000 cicli/rubs

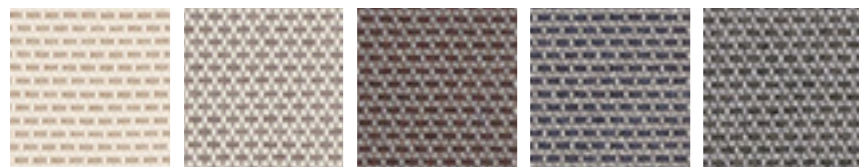
Light fastness : 7/8

Main characteristics : Stain repellent / Anti-mould / Teflon treatment

Technical features :

Care :

STAR (CAT. 3) - 99% Solution Dyed Outdoor Acrylic, 1% PL



B4Q Sabbia
B4R Grigio
B4V Tronco
B4T Blu oltremare
B4U Antracite

Martindale : 30.000 cicli/rubs

Light fastness : 4/5

Fire tests : CAL TB 117:2013 / NFPA 260 / NFEN 1021-1

Sustainability : Standard 100 by Oeko-tex / Greenguard gold certification

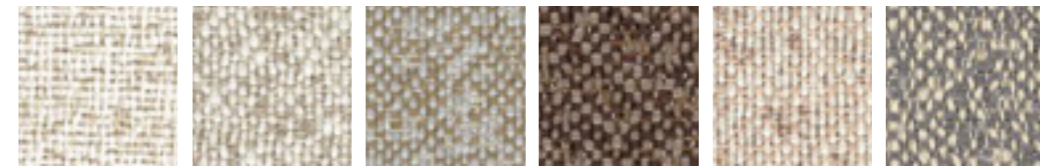
Main characteristics : Bleach Cleanable / Breathable comfort / Mold - mildew resistant /

Water & stain resistant / Sun protection / UV / Fade resistant Landfill free

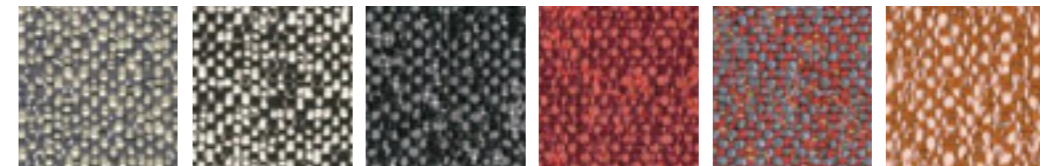
Technical features :

Care :

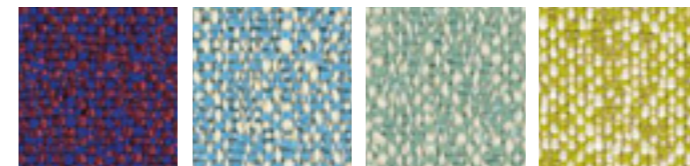
SUMMER (CAT. 4) - 100% PL Flame retardant



B6A Bianco
B6B Avorio
B6C Pietra
B6N Terra
B6D Cipria
B6P Alluminio



B6E Grigio
B6F Sale e pepe
B6G Antracite
B6H Ruggine
B6I Corniola
B6Q Terra di siena



B6M Red-bluc
B6R Azzurro
B6S Giada
B6K Alga

Martindale : 50.000 cicli/rubs

Light fastness : 7

Fire tests : NFPA 260 / CAL TB 117:2013 / B1 DIN 4102, Part 1 / BS 5852 Cigarette /

BS 5852 Match / BS 7176 / M1 NFP902-503-504-505 / IMO 8 Upholstery

Sustainability : Standard 100 by Oeko-tex / Greenguard gold certification

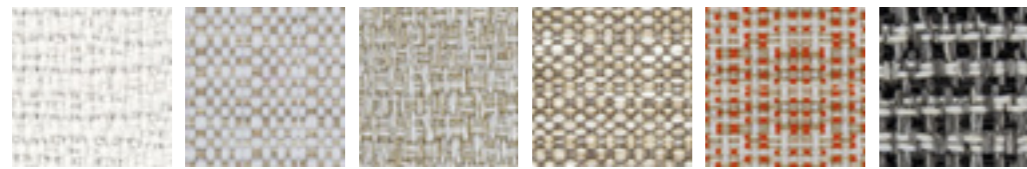
Main characteristics : Bleach Cleanable / Breathable comfort / Mold - mildew resistant /

Water & stain resistant / Sun protection / UV - Fade resistant / Landfill free

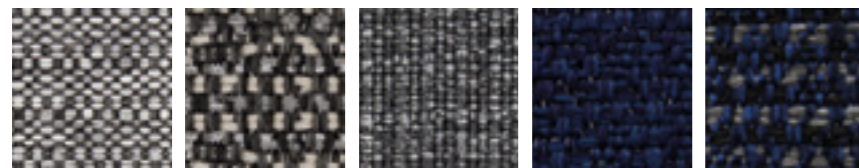
Technical features :

Care :

SOUL (CAT. 4) - 100% Polyolefinic FR



ZX Bianco ZU Panna ZY Beige ZT Nocciola ZK Arancio T1P Grigio melange



ZV Grigio T1M Nero melange ZW Nero T1N Blu T1Q Blu melange

Martindale : 40.000 cicli/rubs

Light fastness : 6

Fire tests : UNI 8456 - 9174 - Class 1 / EN 1021-1/2 / CAL TB 117:2013 / B1 DIN 4102, Part 1 /

NFPA 260:2013 - Class 1 / IMO 2010 FTP CODE Part 8 / EN 13773 (2004) Classe 1 /

DIN EN 1021 Teil 1+2 / BS 5852 CRIB 5 / IMO Res. A652 (16)

Technical features:

Care:

SHIP (CAT. 4) - 57% PC, 43% PP



A2A
Bianco-beige

Martindale : 30.000 cicli/rubs

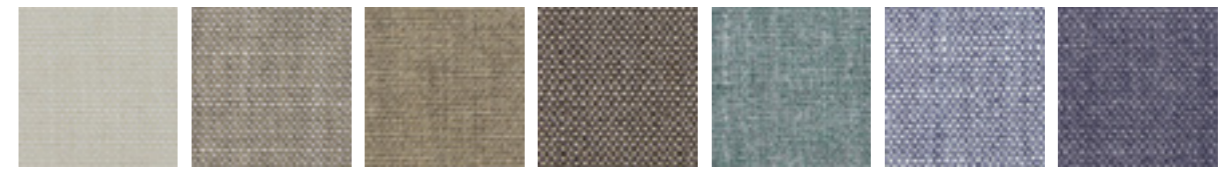
Light fastness : 7

Fire tests : CAL TB 117:2013 / BS 5852 Cigarette

Technical features:

Care:

SUNSET (CAT. 4) - 100% Solution Dyed Outdoor Acrylic



T1A Panna T1B Beige chiaro T1C Beige T1D Tronco T1L Cielo T1E Light blu T1F Blu



T1G Grigio T1H Grigio chiaro T1I Nocciola T1J Grigio scuro T1K Antracite



T1R Senape T1S Terracotta T1T Viola T1U Muschio T1V Bosco T1W Ottanio

Martindale : 50.000 cicli/rubs

Light fastness : 7/8

Fire tests : CAL TB 117:2013 / NFPA 260-UFAC Class 1

Sustainability : Standard 100 by Oeko-tex / Greenguard gold certification

Main characteristics : Colour fast to light / In-outdoor / Mould resistant / Water repellent /

Breathable / Stain resistant / High abrasion resistant

Technical features:

Care:

TRECCIA IN FILATO DI POLIPROPILENE (PER I TAPPETI CLUE) ☁
BRAIDS IN POLYPROPYLENE YARN (FOR CLUE CARPETS)

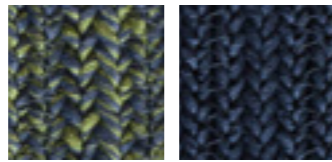
MODELLO TONDO / ROUND MODEL

971/C - BEIGE



Beige Tortora

971/C - GREEN



Verde bosco Blu

971/C - GREY



Grigio perla Grigio

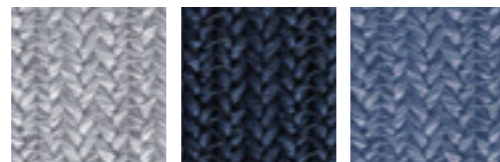
MODELLO RETTANGOLARE / RECTANGULAR MODEL

971/R - BEIGE



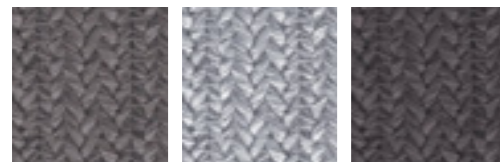
Marrone Tortora Beige

971/R - BLUE



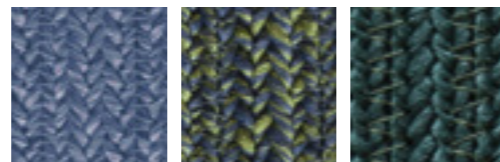
Grigio perla Blu Carta da zucchero

971/R - GREY



Grigio Grigio perla Grigio antracite

971/R - PETROL



Carta da zucchero Verde bosco Petrolio

POTOCO

Via Indipendenza 4
33044 - Manzano, Udine - Italy
T. +39 0432 745111
© 2023 Potocco Sp.A.
info@potocco.it

Potocco USA
Hickory, NC 28602
United States of America
customerservice@potocco-usa.com