

WEEKEND Neri&Hu.  
BOOGIE/KHA Christophe  
Pillet. CIGAR/CRAYON  
Patricia Urquiola.  
ECLIPSE Philippe Nigro.  
EGADI Rodolfo Dordoni.  
HERITAGE This Weber.

**VERY WOOD**



Very Wood esplora sempre nuovi territori per ampliare le collezioni del catalogo, arricchendo la propria proposta coordinata attraverso prodotti che raccontino l'innata passione per il legno insita nell'animo del brand e lo stile dell'azienda che coniuga qualità artigianale, conoscenza tecnica e creatività uniche.

È l'eterogeneità a caratterizzare le collezioni dell'azienda, la cui filosofia si rispecchia nell'idea di

arcipelago: le collezioni sono frutto di visioni e identità progettuali diverse, ognuna con una sua storia, una sua identità, un suo pubblico.

Christophe Pillet, Neri&Hu firmano le nuove collezioni 2022, a cui si aggiungono Patricia Urquiola, Rodolfo Dordoni, Philippe Nigro e This Weber con le collezioni presentate nel 2020: solo alcuni dei grandi nomi con cui ha collaborato Very Wood negli anni.

# COLLECTIONS

*Very Wood is always exploring new territories to expand its catalog collections, enriching its coordinated proposal through products that tell the story of the innate passion for wood inherent in the brand's soul and the company's style, which combines quality craftsmanship, technical knowledge and unique creativity.*

*Heterogeneity characterize the company's collections, whose*

*philosophy is reflected in the idea of archipelago: the collections are the result of different visions and design identities, each with its own history, identity, and audience.*

*Christophe Pillet, Neri&Hu sign the new 2022 collections, joined by Patricia Urquiola, Rodolfo Dordoni, Philippe Nigro and This Weber with collections presented in 2020: just some of the big names Very Wood has collaborated with over the years.*







Very Wood è un marchio che comprende una serie di collezioni composte da sedie, poltrone, divanetti, tavoli e sgabelli pensati per la progettazione di aree lounge, spazi pubblici, ristoranti e in generale tutti gli ambienti dedicati all'ospitalità.

L'azienda combina un design funzionale con l'innata passione per il legno, l'artigianalità, la cura dei dettagli e la qualità dei materiali naturali, reinterpretando forme classiche legate al "Made in Italy" in chiave contemporanea per

incontrare gli standard internazionali del settore Contract. Un vocabolario di forme e colori che esprimono in modo attuale e autoriale il concetto di accoglienza, ospitalità, socialità.

Le collezioni Very Wood nascono dai progetti di designer con background e prospettive differenti: le accomuna quello che è un punto di forza e di distinzione, un savoir faire tipicamente italiano di perfetta sintesi di sobrietà, tradizione, eleganza innata, cultura, bellezza e internazionalità.

# COMPANY



*Very Wood is a brand that includes a series of collections consisting of chairs, armchairs, sofas, tables and stools designed for lounge areas, public spaces, restaurants and in general all environments dedicated to hospitality.*

*The company combines functional design with an innate passion for wood, craftsmanship, attention to details and natural materials quality, reinterpreting classic forms associated with the “Made in Italy” in a contemporary key to meet the international standards of the Contract sector.*

*A vocabulary of shapes and colors that express in a contemporary way the concept of welcome, hospitality, sociality.*

*Very Wood collections are born from the projects of designers with different backgrounds and perspectives: they share what is a strength and distinction, a typically Italian savoir faire of perfect synthesis of sobriety, tradition, innate elegance, culture, beauty and internationality.*















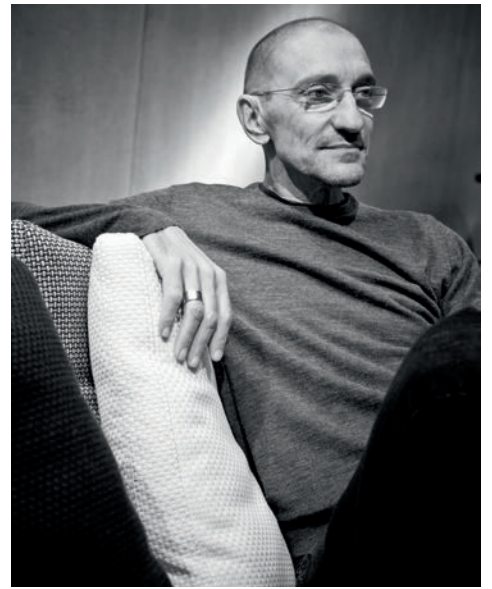




Cristophe Pillet



Neri&Hu



Rodolfo Dordoni



Philippe Nigro



Patricia Urquiola



This Weber

# DESIGNERS



14	BOOGIE
20	KHA
28	WEEKEND
34	CIGAR/CRAYON
40	ECLIPSE
46	EGADI
54	HERITAGE
61	TECHNICAL SPECS
70	AS SHOWN

# CONTENTS

Materiali a confronto  
su forme geometriche  
rigorose: una sedia  
in cui l'appeal naturale  
è la vera forza espressiva  
del prodotto, definito  
da estetica minimale in  
cui la matericità del legno  
dialoga con l'intensità  
tattile dei rivestimenti.

*Materials compared  
on rigorous geometric forms:  
a chair where the natural  
appeal is the real expressive  
force of the product, defined  
by minimal aesthetics  
in which the materiality of  
the wood dialogues with  
the tactile intensity of the  
upholstery.*

design – Cristophe Pillet

# BOOGIE

VERY WOOD









Boogie 22 + Boogie 22/L + Boogie 22/P  
poltroncine dining / dining armchairs  
tech. specs → p 62









Il classico ed essenziale  
moderno: eleganza e rigore  
racchiuse in uno spirito  
retrò, per dare vita  
a un arredo minimal chic,  
mai scontato, in grado  
di dare carattere a ogni  
ambiente.

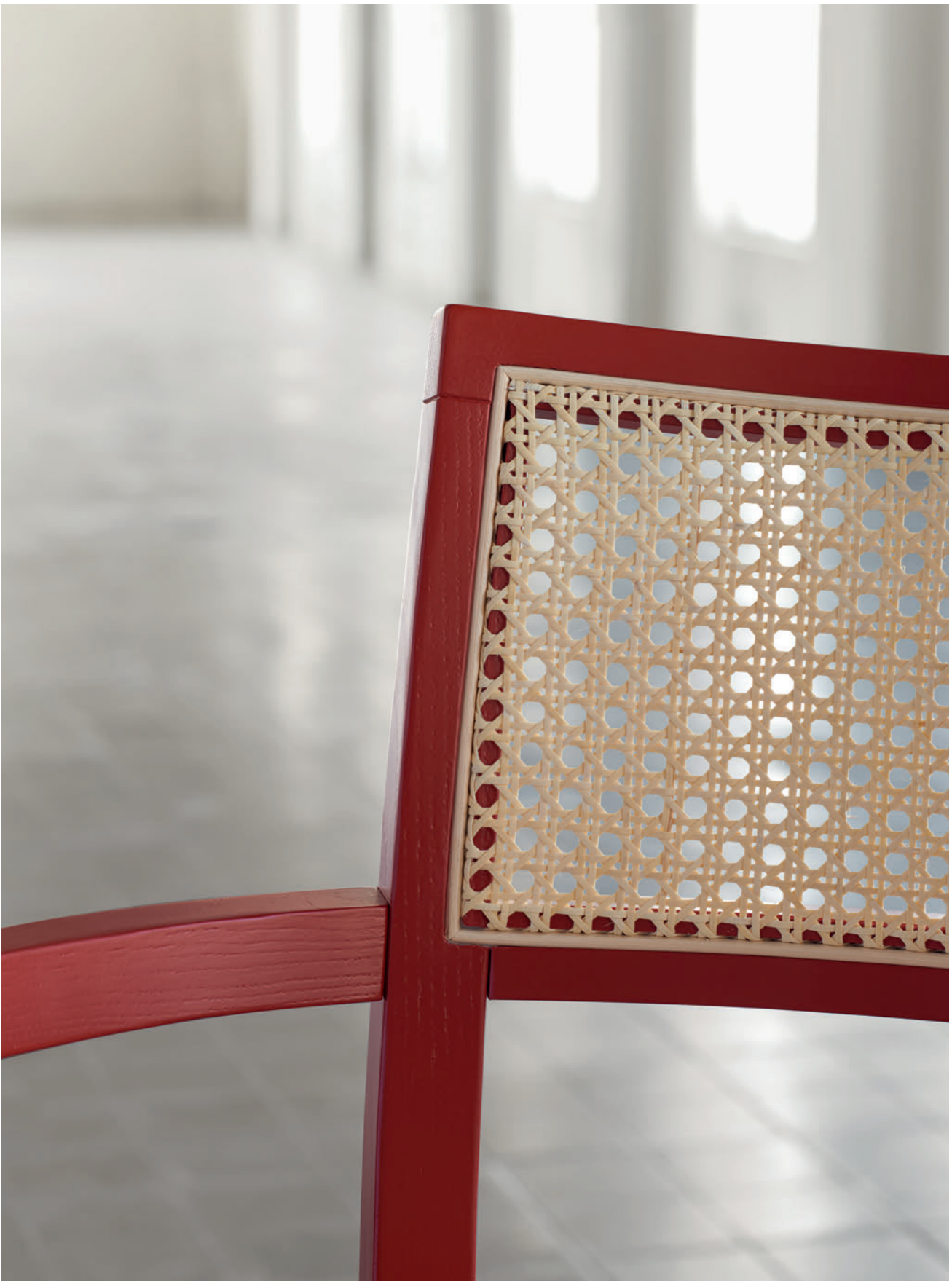
*The classic and essential  
modern: elegance and rigor  
enclosed in a retro spirit,  
to give life to minimal chic  
furniture, never predictable,  
that give character to  
any room.*

design – Cristophe Pillet

KHA

VERY WOOD







VERY WOOD – KHA







Kha 02  
poltroncina dining / dining armchair  
tech. specs → p 62



Kha 22/C  
poltroncina dining / dining armchair  
tech. specs → p 62





VERY WOOD – KHA





Una gerarchia visibile all'insegna della funzionalità e della artigianalità: ogni materiale rappresenta una funzione distinta, intuibile dalle costruzioni esplicite delle sedute.

*A visible hierarchy in the sign of functionality and craftsmanship: each material represents a distinct function, that can be intuited from the explicit constructions of the seats.*

design – Neri&Hu

# WEEKEND

VERY WOOD



Saturday 01  
sedia dining /dining chair  
tech. specs → p 63

Sunday 12  
poltroncina dining /dining armchair  
tech. specs → p 63











Saturday 01 + Saturday 11  
sedie dining / dining chairs  
tech. specs → p 63

Sunday 02 + Sunday 12  
poltroncine dining / dining armchairs  
tech. specs → p 63



Saturday 01  
sedia dining /dining chair  
tech. specs → p 63



Sunday 12  
poltroncina dining /dining armchair  
tech. specs → p 63





Saturday 11  
sedia dining /dining chair  
tech. specs → p 63

Sunday 02  
poltroncina dining /dining armchair  
tech. specs → p 63

Design giocoso e appeal contemporaneo: forme morbide e tonde in rimando a elementi all'apparenza distanti, come la punta di una matita e l'estremità arrotondata di un sigaro.

*Playful design and contemporary appeal: soft, round shapes in reference to seemingly distant elements, such as the tip of a pencil and the rounded end of a cigar.*

design – Patricia Urquiola

# CIGAR/CRAYON

VERY WOOD











Cigar\_IN/01\_FU

Crayon\_IN/02\_LU

Cigar\_IN/01\_LU

Cigar\_IN/01\_LU  
tavolo dining, piano quadrato  
in laminato HPL / dining table,  
with square HPL laminate top  
tech. specs → p 64

Zantilam 32/NR  
poltroncina dining  
/ dining armchair





Cigar\_IN/02-QU  
tavolo alto, piano tondo  
in quarzite / high table,  
with round quarzite top  
tech. specs → p 64

Zantilam 16 + Zantilam 06  
sgabelli bar / barstools



Una collezione in cui è la struttura a essere protagonista: un progetto evocativo in cui la passione per il legno fa da filo conduttore, e dove lo spazio trasmette leggerezza e consente di scoprirne meglio ogni dettaglio.

*A collection in which the structure is the protagonist: an evocative project in which the passion for wood acts as a common thread, and where the space conveys lightness and allows you to better discover every detail.*

design – Philippe Nigro

# ECLIPSE

VERY WOOD









VERY WOOD – ECLIPSE



Eclipse 04  
poltrone Lounge / Lounge armchairs  
tech. specs → p 66





Eclipse 02  
poltroncina dining  
/ dining armchair  
tech. specs → p 66

→ Eclipse 06  
sgabello bar / barstool  
tech. specs → p 66





Così come sono tre le isole, tre prodotti: una poltrona, uno sgabello e una famiglia di sedie. Forme diverse che partono da uno stesso principio creativo, un gioco di equilibrio tra le parti, in cui le imbottiture sembrano sospese sulla struttura.

*Just like the three islands, three are the products: an armchair, a stool and a family of chairs. Different forms that originate from the same creative principle, a game of balance between the parts, in which the upholstery seems to be suspended on the structure.*

design – Rodolfo Dordoni

# EGADI

VERY WOOD







Egadi 01  
sedie dining / dining chairs  
tech. specs → p 67

Egadi 02 + Egadi 21  
poltroncine dining / dining armchairs  
tech. specs → p 67









Egadi 21  
poltroncina dining / dining armchair  
tech. specs → p 67

→ Egadi 416/H + Egadi 06/H  
sgabelli bar / barstools  
tech. specs → p 68





Egadi 04  
poltrone lounge / lounge armchairs  
tech. specs → p 67







Forme sinuose e comfort sono gli elementi chiave della collezione in cui le imbottiture sposano la struttura rigida del legno: un abbraccio che spazia dallo stile classico a quello contemporaneo e moderno.

*Sinuous shapes and comfort are the key elements of the collection in which the upholstery marries the rigid structure of the wood: an embrace that ranges from classic to contemporary and modern styles.*

design – This Weber

# HERITAGE

VERY WOOD







Heritage 01  
sedia dining / dining chair  
tech. specs → p 69

Heritage 02  
poltroncina dining / dining armchair  
tech. specs → p 69









Heritage 04  
poltrona lounge / lounge armchair  
tech. specs → p 69









# TECHNICAL SPECS

# BOOGIE

Poltroncina dining in frassino con seduta imbottita, rivestita in cuoio, tessuto, vinile o pelle. L'imbottitura delle sedute poggia su cinghie elastiche. Schienale in cuoio, legno multistrato curvato o pannello imbottito e rivestito in tessuto, vinile o pelle. Il cuoio è disponibile in tre colorazioni standard: Mustang (testa di moro), Andaluz (tortora) e Morgan (rosso).

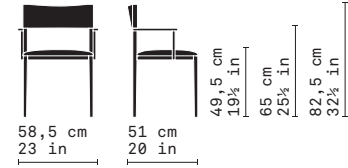
*Dining armchair in ashwood with upholstered seat, covered in saddle leather, fabric, vinyl or leather. Seat upholstery is made with elastic webbing. Back in saddle leather, in bent plywood or upholstered panel covered in fabric, vinyl or leather. The Saddle Leather is available in three standard colors: Mustang (dark brown), Andaluz (dove grey) and Morgan (red).*

pictures → p 14

design — Christophe Pillet

## BOOGIE 22 - 22/L - 22/P

poltroncina dining  
/dining armchair



# KHA

Collezione in frassino composta da poltroncine dining con schienale disponibile in paglia di Vienna in finitura naturale o imbottito e rivestito in tessuto, vinile o pelle.

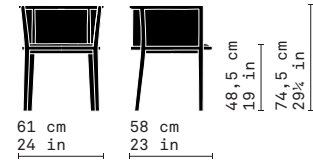
*Collection in ashwood composed by dining armchairs with back available either in cane with natural finish or upholstered and covered in fabric, vinyl or leather.*

pictures → p 20

design — Christophe Pillet

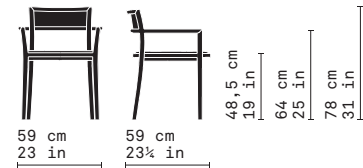
## KHA 02 - 12/C

poltroncina dining  
/dining armchair



## KHA 22 - 22/C

poltroncina dining  
/dining armchair





# WEEKEND

Collezione in frassino composta da sedia dining Saturday e poltroncina dining Sunday.  
La base delle sedute è costituita da un unico elemento in massello di frassino sagomato.  
Seduta imbottita e rivestita in tessuto, vinile o pelle. Schienale in legno multistrato impiallacciato in frassino o imbottito e rivestito in tessuto, vinile o pelle.

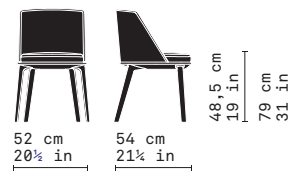
Collection in ashwood composed by dining chair Saturday and dining armchair Sunday.  
The wooden base is made of a single shaped element in solid ashwood. Upholstered seat, covered in fabric, vinyl or leather. Back in plywood, veneered in ashwood or upholstered and covered in fabric, vinyl or leather.

pictures → p 28

design — Neri&Hu

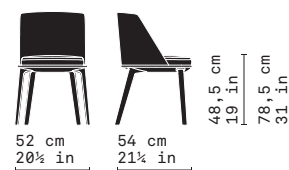
## SATURDAY 01

sedia dining  
/dining chair



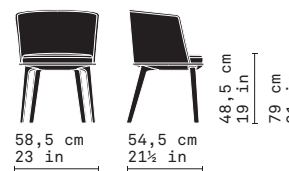
## SATURDAY 11

sedia dining  
/dining chair



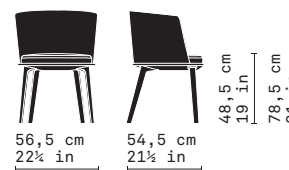
## SUNDAY 02

poltroncina dining  
/dining armchair



## SUNDAY 12

poltroncina dining  
/dining armchair



# CIGAR / CRAYON

Collezione composta da tavoli dining e tavoli alti, in versione indoor o outdoor.

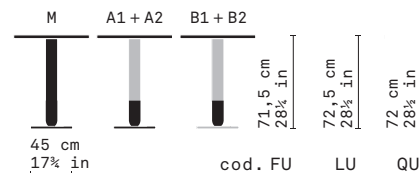
Collection composed by dining and high tables, available for indoor or outdoor.

pictures → p 34

design — Patricia Urquiola

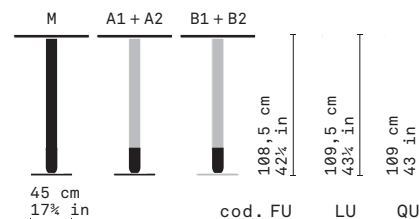
## CIGAR\_IN / OUT 01

tavolo dining  
/dining table



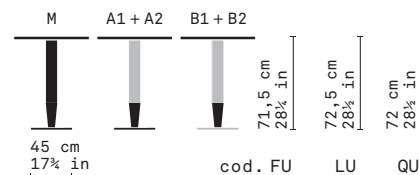
## CIGAR\_IN / OUT 02

tavolo alto  
/high table



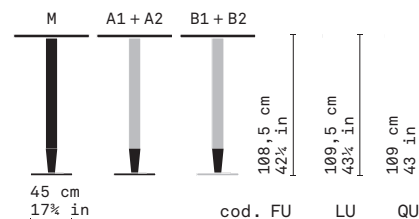
## CRAYON\_IN / OUT 01

tavolo dining  
/dining table



## CRAYON\_IN / OUT 02

tavolo alto  
/high table



Opzionale solo per i modelli CIGAR\_IN / CRAYON\_IN:  
/ Optional only for CIGAR\_IN / CRAYON\_IN models:

Doppia presa USB incassata al centro del piano.  
Il cavo fuoriesce dal fondo della colonna per circa 2 m (tavoli dining) o circa 1,60 m (tavoli alti).  
Il cavo viene fornito senza spina.  
/ Built-in double USB socket in the table top center.  
The cable protrudes from the column bottom by approx. 2 m (dining tables) or approx 1,60 m (high tables). The cable is supplied without plug.

Per informazioni relative alle misure dei piani e agli abbinamenti piano-base consultare il sito web ([www.verywood.it](http://www.verywood.it)) oppure il Listino Prezzi vigente.  
/ For information regarding table tops' measurements and possible base-top combinations, please check the following website ([www.verywood.it](http://www.verywood.it)) or the current Price List.



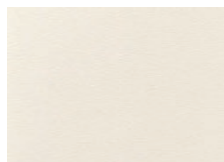
**MATERIALI BASI**  
/ **BASES MATERIALS:**

**CIGAR\_IN / CRAYON\_IN:**

Basi per utilizzo indoor con piastra a pavimento e sottopiano in acciaio, colonna e connettore in alluminio.  
/ *Bases for indoor use with floor and upper plate in steel, column and lower connector in aluminium.*

**CIGAR\_OUT / CRAYON\_OUT:**

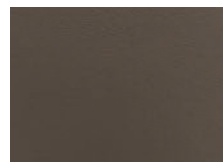
Basi per utilizzo outdoor con piastra a pavimento e sottopiano in acciaio zincato, colonna e connettore in alluminio.  
/ *Bases for outdoor use with floor and upper plate in zinc-plated steel, column and lower connector in aluminium.*



\*\* Burro



\*\* Terracotta



\*\* Grigio Scuro

In versione monocolora o bicolore  
/ *Monochrome or bicolor*

**MATERIALI PIANI**  
/ **TOPS MATERIALS:**

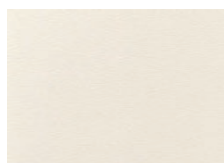
**LU**

Bordo ABS spessore 22 mm.  
/ *Thickness 22 mm, ABS edge.*



**LU:** Laminato HPL con interno in truciolare. Disponibile con bordo in tinta con il piano o con colore diverso.  
/ *HPL laminate with chipboard core. Edge available in the same color of top or in different color.*

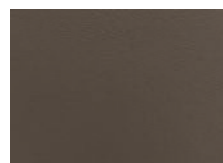
Utilizzo / Use:  
INDOOR



\*\* Burro



\*\* Terracotta



\*\* Grigio Scuro

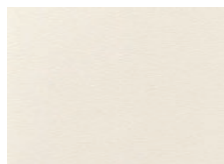
**FU**

Bordo inclinato spessore 12 mm colore nero.  
/ *Edge in black, thickness 12 mm.*

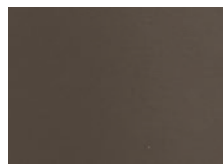


**FU:** Laminato stratificato HPL. Colori Burro o Grigio Scuro.  
/ *HPL stratified laminate with inclined. Colors: Burro or Grigio Scuro.*

Utilizzo / Use:  
INDOOR, OUTDOOR



\*\* Burro



\*\* Grigio Scuro

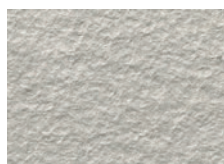
**QU**

Bordo diritto spessore 20 mm.  
/ *Straight edge thickness 20 mm.*



**QU:** Quarzite grigia fiammata e spazzolata.  
/ *Gray quartzite, flamed and brushed.*

Utilizzo / Use:  
INDOOR, OUTDOOR



Quarzite grigia  
/ *Gray quartzite*

**PIANI / TOPS:**

**CIGAR / CRAYON**

Ø 60 cm

Ø 70 cm

Ø 80 cm

60x60 cm

70x70 cm

80x80 cm

01 tavolo dining / dining table

LU / FU / QU

LU / FU / QU

LU / FU / QU

LU / FU

LU / FU

LU / FU

02 tavolo alto / high table

LU / FU / QU

LU / FU / QU

—

LU / FU / QU

—

—

\*\*

Riferimenti indicativi scala RAL / Indicative references RAL colors:  
Burro RAL 9002, Terracotta RAL 3016, Grigio Scuro RAL 7002

# ECLIPSE

Collezione in frassino composta da poltrona dining, poltroncina lounge e sgabello bar con seduta e schienale imbottiti in tessuto, vinile o pelle.

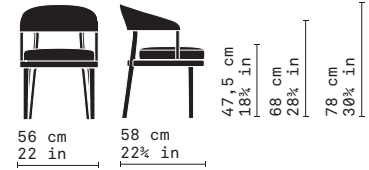
Collection in ashwood composed by dining armchair, lounge armchair and barstool. Seat and back can be upholstered with fabric, vinyl or leather.

pictures → p 40

design — This Weber

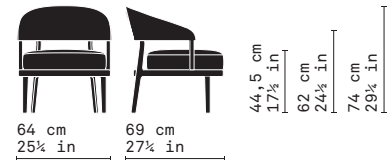
## ECLIPSE 02

poltroncina dining  
/dining armchair



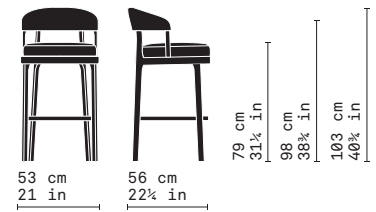
## ECLIPSE 04

poltrona lounge  
/lounge armchair



## ECLIPSE 06

sgabello bar  
/barstool





# EGADI

Collezione in frassino composta da sedia, poltroncine dining, poltrona lounge e sgabello disponibile in due altezze. Seduta e schienale imbottiti in tessuto, vinile o pelle.

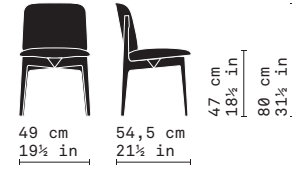
Collection in ashwood composed by dining chair, armchairs, lounge armchair and barstool available in two seat heights. Seat and back upholstered with fabric, vinyl or leather.

pictures → p 46

design — Rodolfo Dordoni

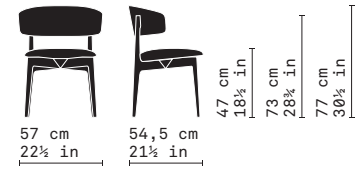
## EGADI 01

sedia dining  
/dining chair



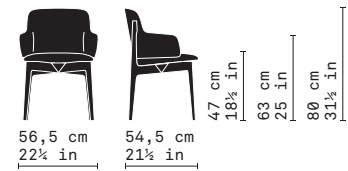
## EGADI 01

poltroncina dining  
/dining armchair



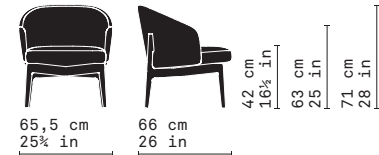
## EGADI 02

poltroncina dining  
/dining armchair



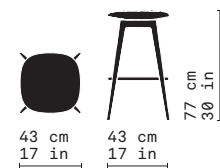
## EGADI 04

poltrona lounge  
/lounge armchair



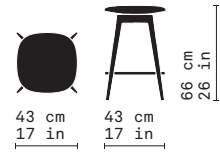
## EGADI 416L

sgabello bar  
/barstool



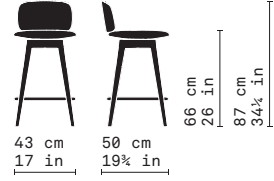
**EGADI 416H**

sgabello bar  
/barstool



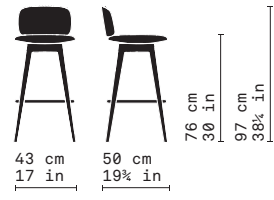
**EGADI 06L**

sgabello bar  
/barstool



**EGADI 06H**

sgabello bar  
/barstool





# HERITAGE

Collezione in frassino con sedile e schienale imbottiti rivestiti in tessuto, vinile o pelle. L'imbottitura delle sedute appoggia su cinghie elastiche.

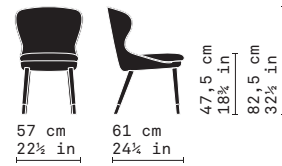
Collection in ashwood with seat and back upholstered in fabric, vinyl or leather. Seat upholstery is made with elastic webbing.

pictures → p 54

design — This Weber

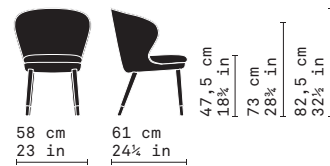
## HERITAGE 01

sedia dining  
/dining chair



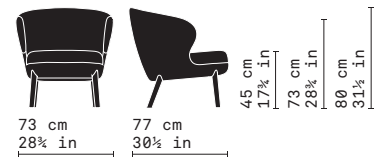
## HERITAGE 02

poltroncina dining  
/dining armchair



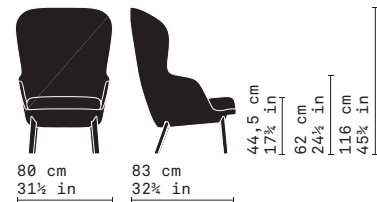
## HERITAGE 04

poltrona lounge  
/lounge armchair



## HERITAGE 08

poltrona bergère  
/bergère armchair



→ p. 15, 17, 18

**BOOGIE 22/P**

— cuoio schienale e seduta / back and seat saddle leather: Morgan  
— frassino naturale / ashwood natural: FR-NAT01

→ p. 17

**BOOGIE 22/L**

— tessuto seduta / seat fabric: Kvadrat Re-wool 408  
— frassino tinto wengè / ashwood stained wengè: FR-WEN01

→ p. 16, 19

**BOOGIE 22**

— tessuto schienale e seduta / back and seat fabric: Kvadrat Re-wool 868  
— frassino laccato PANTONE / ashwood matt lacquered PANTONE: 17-0613 TPX Vetiver

→ p. 22, 25

**KHA 22/C**

— schienale in paglia di Vienna naturale / back in cane with natural finish  
— pelle seduta / seat leather: Cuouim Zaffiro 1152  
— frassino naturale / ashwood natural: FR-NAT01

→ p. 23

**KHA 22**

— tessuto schienale e seduta / back and seat fabric: Kvadrat Divina 3 melange 0517  
— frassino laccato PANTONE / ashwood matt lacquered PANTONE: 17-0613 TPX Vetiver

→ p. 21, 23

**KHA 22/C**

— schienale in paglia di Vienna naturale / back in cane with natural finish  
— tessuto di seduta / seat fabric: Kvadrat Divina 3 melange 0517  
— frassino laccato RAL / ashwood matt lacquered RAL: Brown red 3011

→ p. 26

**KHA 12/C**

— schienale in paglia di Vienna naturale / back in cane with natural finish  
— pelle seduta / seat leather: Cuouim Zaffiro 1152  
— frassino naturale / ashwood natural: FR-NAT01

→ p. 27

**KHA 12/C**

— schienale in paglia di Vienna naturale / back in cane with natural finish  
— tessuto seduta / seat fabric: Kvadrat Divina 3 Melange 0120  
— frassino laccato nero Gervasoni / ashwood black lacquered Gervasoni: FR-LNG01

→ p. 24, 27

**KHA 02**

— tessuto seduta e schienale / seat and back fabric: Kvadrat Divina 3 Melange 0180  
— frassino laccato PANTONE / ashwood matt lacquered PANTONE: 16-4706 TPX Silver Blu

→ p. 30-31

**SUNDAY 02**

— tessuto seduta e schienale / seat and back fabric: Kvadrat Reflect 274  
— frassino naturale / ashwood natural: FR-NAT01

→ p. 30-31

**SATURDAY 11**

— tessuto seduta / seat fabric: Kvadrat Reflect 174  
— frassino naturale / ashwood natural: FR-NAT01

→ p. 30-31, 32

**SUNDAY 12**

— tessuto seduta / seat fabric: Kvadrat Reflect 444  
— frassino tinto RAL / ashwood matt stained RAL: Oxido red 3009

→ p. 30-31, 32

**SATURDAY 01**

— tessuto seduta e schienale / seat and back fabric: Kvadrat Reflect 564  
— frassino tinto RAL / ashwood matt stained RAL: Oxido red 3009

→ p. 30-31, 33

**SUNDAY 02**

— tessuto seduta e schienale / seat and back fabric: Kvadrat Reflect 434  
— frassino sbiancato / bleached ashwood

→ p. 30-31, 33

**SATURDAY 11**

— tessuto seduta / seat fabric: Kvadrat Reflect 924  
— frassino sbiancato / bleached ashwood

→ p. 29, 30-31

**SATURDAY 01**

— tessuto seduta e schienale / seat and back fabric: Kvadrat Reflect 204  
— frassino tinto noce Canaletto Gervasoni / ashwood stained American walnut Gervasoni: FR-NCG01

→ p. 29, 30-31

**SUNDAY 12**

— tessuto seduta / seat fabric: Kvadrat Reflect 944  
— frassino tinto noce Canaletto Gervasoni / ashwood stained American walnut Gervasoni: FR-NCG01

→ p. 36-37

**CIGAR\_IN/ 02 - FU**

— piano / top 60x60 cm: laminato stratificato / stratified laminate HPL, Grigio Scuro  
— bordo / edge: nero / black  
— colonna / column: alluminio / aluminium, Grigio Scuro  
— connettore / lower connector: alluminio / aluminium, Grigio scuro  
— base / floor plate: acciaio / steel, Grigio Scuro

→ p. 36-37

**CRAYON\_IN/ 02-QU**

— piano / top Ø 60 cm: quarzite grigia fiammata e spazzolata / grey quartzite, flamed and brushed  
— colonna / column: alluminio / aluminium, Burro  
— connettore / lower connector: alluminio / aluminium, Terracotta  
— base / floor plate: acciaio / steel, Terracotta

→ p. 36-37

**CRAYON\_IN/ 02-LU**

— piano / top 70x70 cm: laminato / laminate HPL, Terracotta  
— bordo / edge: ABS, Terracotta  
— colonna / column: alluminio / aluminium, Terracotta  
— connettore / lower connector: alluminio / aluminium, Burro  
— base / floor plate: acciaio / steel, Burro

→ p. 36-37, 38

**CIGAR\_IN/ 01-LU**

— piano / top 70x70 cm: laminato / laminate HPL, Terracotta  
— colonna / column: alluminio / aluminium, Terracotta  
— connettore / lower connector: alluminio / aluminium, Grigio Scuro  
— base / floor plate: acciaio / steel, Grigio Scuro

→ p. 36-37

**CIGAR\_IN/ 01-FU**

— piano / top Ø 80cm: laminato stratificato / stratified laminate HPL, Burro  
— bordo / edge: nero / black  
— colonna / column: alluminio / aluminium, Burro  
— connettore / lower connector: alluminio / aluminium, Grigio Scuro  
— base / floor plate: acciaio / steel, Grigio Scuro

→ p. 36-37

**CIGAR\_IN/ 01-QU**

— piano / top Ø 60cm: quarzite grigia fiammata e spazzolata / grey quartzite, flamed and brushed

— colonna / column: alluminio / aluminium, Grigio Scuro  
— connettore / lower connector: alluminio / aluminium, Burro  
— base / floor plate: acciaio / steel, Burro

→ p. 36-37

**CRAYON\_IN/01\_LU**

— piano / top 80x80cm: laminato / laminate HPL, Terracotta  
— colonna / column: alluminio / aluminium, Terracotta  
— connettore / lower connector: alluminio / aluminium, Terracotta  
— base / floor plate: acciaio / steel, Terracotta

→ p. 36-37

**CRAYON\_IN/01\_LU**

— piano / top Ø 60 cm: laminato stratificato / stratified laminate HPL, Burro  
— bordo / edge: nero / black  
— colonna / column: alluminio / aluminium, Burro  
— connettore / lower connector: alluminio / aluminium, Grigio Scuro  
— base / floor plate: acciaio / steel, Grigio Scuro

→ p. 38

**ZANTILAM 32/NR**

— cordino naturale / natural thin rope  
— tessuto / fabric: Grisù 602  
— frassino naturale / ashwood natural: FR-NAT01

→ p. 39

**ZANTILAM 16**

— tessuto / fabric: Kvadrat Encircle 0452  
— frassino naturale / ashwood natural: FR-NAT01

→ p. 39

**ZANTILAM 06**

— tessuto / fabric: Kvadrat Encircle 0572  
— frassino naturale / ashwood natural: FR-NAT01

→ p. 42-43

**ECLIPSE 04**

— tessuto / fabric: Kvadrat Drop 0121  
— frassino laccato nero Gervasoni / ashwood black lacquered Gervasoni: FR-LNG01

→ p. 42-43

**ECLIPSE 04**

— tessuto / fabric: Kvadrat Drop 0151  
— frassino naturale / ashwood natural: FR-NAT01

# AS SHOWN



→ p. 42-43  
**ECLIPSE 04**  
— tessuto / fabric: Kvadrat Drop 0421  
— frassino tinto noce Canaletto  
Gervasoni / ashwood stained American  
walnut Gervasoni: FR-NCG01

→ p. 44  
**ECLIPSE 02**  
— tessuto / fabric: Kvadrat Drop 0671  
— frassino laccato nero Gervasoni  
/ ashwood black lacquered Gervasoni:  
FR-LNG01

→ p. 44  
**ECLIPSE 02**  
— tessuto / fabric: Kvadrat Drop 0951  
— frassino naturale / ashwood natural:  
FR-NAT01

→ p. 44  
**ECLIPSE 02**  
— tessuto / fabric: Kvadrat Drop 0761  
— frassino tinto noce Canaletto  
Gervasoni / ashwood stained American  
walnut Gervasoni: FR-NCG01

→ p. 45  
**ECLIPSE 06**  
— tessuto / fabric: Kvadrat Drop 0121  
— frassino laccato nero Gervasoni  
/ Ashwood black lacquered Gervasoni:  
FR-LNG01

→ p. 48-49  
**EGADI 01**  
— tessuto / fabric: Kvadrat  
Revive 1 0524  
— frassino laccato grigio Gervasoni  
/ ashwood grey lacquered Gervasoni:  
FR-LGG01

→ p. 48-49  
**EGADI 01**  
— tessuto / fabric: Kvadrat  
Revive 1 0634  
— frassino laccato grigio Gervasoni  
/ ashwood grey lacquered Gervasoni:  
FR-LGG01

→ p. 48-49  
**EGADI 01**  
— tessuto / fabric: Kvadrat  
Revive 1 0534  
— frassino laccato grigio Gervasoni  
/ ashwood grey lacquered Gervasoni:  
FR-LGG01

→ p. 48-49  
**EGADI 01**  
— tessuto / fabric: Kvadrat  
Revive 1 0144  
— frassino laccato grigio Gervasoni  
/ ashwood grey lacquered Gervasoni:  
FR-LGG01

→ p. 48-49  
**EGADI 21**  
— tessuto / fabric: Kvadrat  
Revive 1 0524  
— frassino naturale  
/ ashwood natural: FR-NAT01

→ p. 48-49, 50  
**EGADI 21**  
— tessuto / fabric: Kvadrat  
Revive 1 0774  
— frassino naturale  
/ ashwood natural: FR-NAT01

→ p. 48-49  
**EGADI 21**  
— tessuto / fabric: Kvadrat  
Revive 1 0224  
— frassino naturale  
/ ashwood natural: FR-NAT01

→ p. 48-49  
**EGADI 21**  
— tessuto / fabric: Kvadrat  
Revive 1 0154  
— frassino naturale  
/ ashwood natural: FR-NAT01

→ p. 48-49  
**EGADI 02**  
— tessuto / fabric: Kvadrat  
Revive 1 0424  
— frassino laccato nero Gervasoni  
/ ashwood black lacquered Gervasoni:  
FR-LNG01

→ p. 48-49  
**EGADI 02**  
— tessuto / fabric: Kvadrat  
Revive 1 0224  
— frassino laccato nero Gervasoni  
/ ashwood black lacquered Gervasoni:  
FR-LNG01

→ p. 48-49  
**EGADI 02**  
— tessuto / fabric: Kvadrat  
Revive 1 0164  
— frassino laccato nero Gervasoni  
/ ashwood black lacquered Gervasoni:  
FR-LNG01

→ p. 48-49  
**EGADI 02**  
— tessuto / fabric: Kvadrat  
Revive 1 0914  
— frassino laccato nero Gervasoni  
/ ashwood black lacquered Gervasoni:  
FR-LNG01

→ p. 51  
**EGADI 416/H**  
— tessuto / fabric: Kvadrat  
Revive 1 0164  
— frassino naturale / ashwood  
natural: FR-NAT01

→ p. 51  
**EGADI 06/H**  
— tessuto / fabric: Kvadrat  
Revive 1 0164  
— frassino naturale / ashwood  
natural: FR-NAT01

→ p. 52-53  
**EGADI 04**  
— tessuto / fabric: Kvadrat  
Revive 1 0414  
— frassino laccato nero Gervasoni  
/ ashwood black lacquered Gervasoni:  
FR-LNG01

→ p. 52-53  
**EGADI 04**  
— tessuto / fabric: Kvadrat  
Revive 1 0154  
— frassino laccato nero Gervasoni  
/ ashwood black lacquered Gervasoni:  
FR-LNG01

→ p. 52-53  
**EGADI 04**  
— tessuto / fabric: Kvadrat  
Revive 1 0454  
— frassino laccato nero Gervasoni  
/ ashwood black lacquered Gervasoni:  
FR-LNG01

→ p. 52-53  
**EGADI 04**  
— tessuto / fabric: Kvadrat  
Revive 1 0944  
— frassino tinto rovere naturale  
/ ashwood stained natural oak:  
FR-ROF01

→ p. 52-53  
**EGADI 04**  
— tessuto / fabric: Kvadrat  
Revive 1 0834  
— frassino laccato PANTONE  
/ ashwood matt lacquered PANTONE:  
17-0613 TPX Vetiver

→ p. 52-53  
**EGADI 04**  
— tessuto / fabric: Kvadrat  
Revive 1 0974  
— frassino laccato PANTONE  
/ ashwood matt lacquered PANTONE:  
17-0613 TPX Vetiver

→ p. 55, 57  
**HERITAGE 01**  
— tessuto / fabric: Kvadrat Patio 170  
— frassino naturale / ashwood natural:  
FR-NAT01

→ p. 56  
**HERITAGE 02**  
— tessuto / fabric: Kvadrat Patio 110  
— frassino laccato grigio Gervasoni  
/ ashwood grey lacquered Gervasoni:  
FR-LGG01

→ p. 58  
**HERITAGE 08**  
— tessuto / fabric: Kvadrat Patio 430  
— frassino tinto noce Canaletto  
Gervasoni / ashwood stained American  
walnut Gervasoni: FR-NCG01

→ p. 59  
**HERITAGE 04**  
— tessuto / fabric: Kvadrat Patio 970  
— frassino naturale / ashwood natural:  
FR-NAT01



# ITALIAN CHAIR MAKER

**VERY  
WOOD**

Art Direction:  
Concetta Giannangeli  
Graphic Design:  
Designwork  
Photo:  
Miro Zagnoli  
Laura Tessaro

Printed in Italy  
June 2022



Very Wood  
Italian Chair Maker  
Gervasoni Group

Very Wood è un brand  
Gervasoni spa

Gervasoni spa  
Viale del Lavoro, 88  
33050 Pavia di Udine  
Udine – Italy

P +39 0432 656611  
F +39 0432 656612

info@verywood.it  
www.verywood.it



Società soggetta a direzione  
e coordinamento di  
Italian Design Brands S.p.A.



The mark of  
responsible forestry