

# COLECCIÓN COLORES

COLORS COLLECTION

(\*) Colores, tejidos y tableros disponibles a partir de abril 2023  
 (\*) Colours, fabrics and boards available from April 2023

## ALUMINIO / ALUMINIUM



**Blanco** White  
**Crema** Cream  
**Gris** Grey  
**Chocolate** Chocolate  
**Bronce** Bronze  
**Negro** Black  
**Navy** Navy



**Oro** Gold  
**Salmon** Salmon  
**Pardo \*** Brown  
**Olive \*** Olive  
**Violeta \*** Violet  
**Sky \*** Sky  
**Honey \*** Honey

## POLIPROPILENO / POLYPROPYLENE



**Blanco** White  
**Crema** Cream  
**Negro** Black  
**Pardo \*** Brown  
**Olive \*** Olive

## POLIETILENO / POLYETHYLENE



**Blanco** White  
**Crema** Cream  
**Chocolate** Chocolate  
**Negro** Black

## POLIETILENO LACADO / LACQUERED POLYETHYLENE



**Blanco** White  
**Crema** Cream  
**Chocolate** Chocolate  
**Negro** Black

## TABLEROS TABLETOP

(\*) Colores, tejidos y tableros disponibles a partir de abril 2023  
 (\*) Colours, fabrics and boards available from April 2023

### HPL 10 mm



**Blanco** White  
**Blanco (borde negro)** White (black edge)



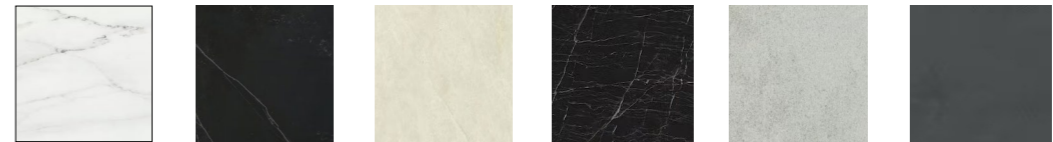
**Crema** Cream  
**Negro** Black

### HPL 12 mm



**Marmól blanco \*** White marble  
**Marmól negro \*** Black marble  
**Corten \*** Corten

### DEKTON / DEKTON \*



**Rem** Rem  
**Kelya** Kelya  
**Sasea** Sasea  
**Somnia** Somnia  
**Kovik** Kovik  
**Micron** Micron

### VIDRIO / GLASS



**Blanco** White  
**Crema** Cream  
**Negro** Black  
**Transparente** Transparent

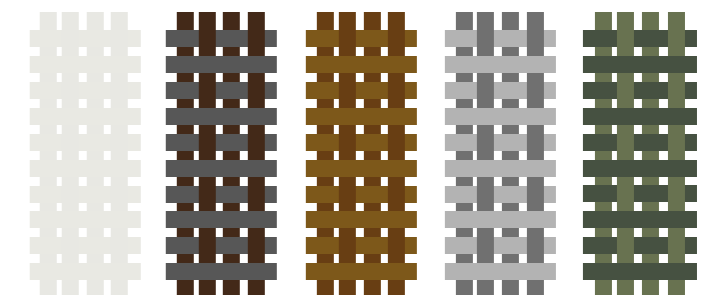
### REPOSABRAZOS ARMREST

### MADERA / WOOD



**Iroko** Iroko

### TELAS DE CINTA TAPE FABRICS



**vainilla**  
**chocolate antracita**  
**marrón toffee**  
**mármol basalto**  
**musgo \*** tirol

TELAS DE COLCHONETA Y COJÍN  
MAT & CUSHION FABRICS

(\*) Colores, tejidos disponibles a partir de abril 2023  
(\* Colours, fabrics and boards available from April 2023)

VITA \*

57%PP 38%PES 5%PU



blanco  
IMP07



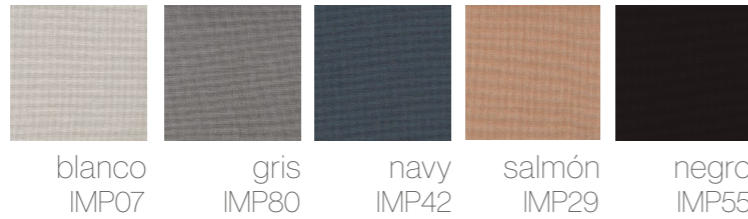
Peso Weight	390 gr/m2 ± 5% 546 gr/ml ± 5%	Resistencia al agua Columna de agua Waterproofing Water column	>2000mbar
Resistencia a la abrasión Abrasion resistance	EN ISO 12947-2:1998 60000	Tratamiento antibacteriano Antibacterial treatment	Yes
Solidez a la intemperie artificial Colour fastness to artificial weathering	EN ISO 105-B04:1997 (1000 horas) >6		

DOLCE

57%PP 38%PES 5%PU



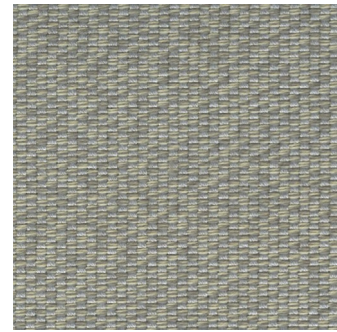
ecrue  
IMP16



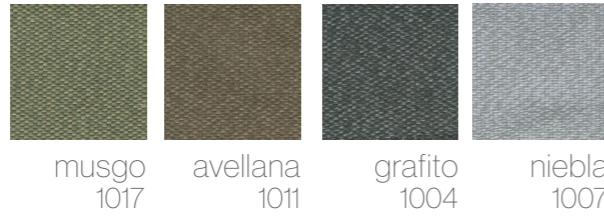
Peso Weight	390 gr/m2 ± 5% 546 gr/ml ± 5%	Resistencia al agua Columna de agua Waterproofing Water column	>2000mbar
Resistencia a la abrasión Abrasion resistance	ISO 12947-2:1998 60000	Tratamiento antibacteriano Antibacterial treatment	Yes
Solidez a la intemperie artificial Colour fastness to artificial weathering	ISO 105-B04:1997 (1000 horas) >6		

BRUMA \*

100% Acrilico 100% Acrylic  
Water repellent. Anti-stain treatmnet



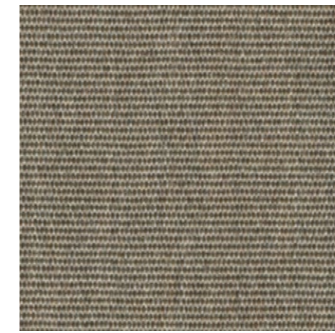
dragon  
1008



Peso Weight	400 gr/m2	Solidez a la luz Fastness to light	7/8
Resistencia a la abrasión Abrasion resistance	ISO 12497-2:2016 25000	Resistencia al agua Columna de agua Waterproofing Water column	ISO 20811 70mm
Solidez a la intemperie artificial Colour fastness to artificial weathering	ISO 105-B04:1998 4/5	Tratamiento antibacteriano Antibacterial treatment	Yes

PANAMA

100% Acrilico 100% Acrylic  
Water repellent. Anti-stain treatmnet



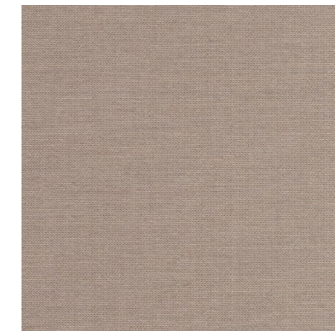
coco  
8001



Peso Weight	280 gr/m2	Solidez a la luz Fastness to light	7/8
Resistencia a la abrasión Abrasion resistance	ISO 12497-2:2016 2000	Resistencia al agua Columna de agua Waterproofing Water column	ISO 20811 100mm
Solidez a la intemperie artificial Colour fastness to artificial weathering	ISO 105-B04:1998 4/5	Tratamiento antibacteriano Antibacterial treatment	Yes

ASGARD \*

100% Acrilico 100% Acrylic



mud  
A44



Peso Weight	330 gr/m2	Solidez a la luz Fastness to light	7/8
Resistencia a la abrasión Abrasion resistance	ISO 12497-2:2016 25000	Resistencia al agua Columna de agua Waterproofing Water column	ISO 20811 70mm
Solidez a la intemperie artificial Colour fastness to artificial weathering	ISO 105-B04:1998 7/8	Tratamiento antibacteriano Antibacterial treatment	Yes

# TALES \*

100% Acrílico 100% Acrylic

(\*) Colores, tejidos disponibles a partir de abril 2023  
 (\*) Colours, fabrics and boards available from April 2023



beige smoke  
1186



beige  
1180



grey black  
1188



meadow  
1182



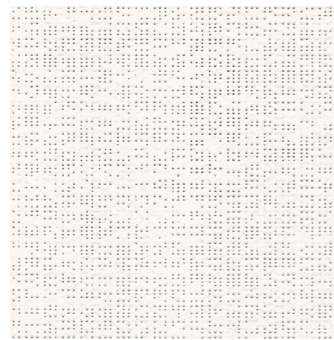
milk brown  
1421

<b>Peso</b> Weight	460 gr/m2	<b>Solidez a la luz</b> Fastness to light	7/8
<b>Resistencia a la abrasión</b> Abrasion resistance	ISO 12497-2:2016 25000	<b>Resistencia al agua</b> Columna de agua Waterproofing Water column	ISO 20811 70mm
<b>Solidez a la intemperie artificial</b> Colour fastness to artificial weathering	ISO 105-B04:1998 7/8	<b>Tratamiento antibacteriano</b> Antibacterial treatment	Yes

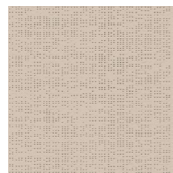
# TELAS DE PROTECCIÓN SOLAR SOLAR PROTECTION

## SOLTIS 96

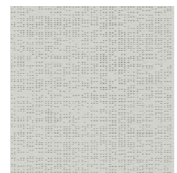
100% Poliester 100% Polyester



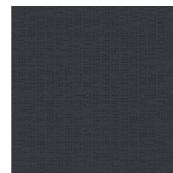
blanco  
96-8102



beige  
96-50843



gris claro  
96-2171



antracita  
96-2047

<b>Peso</b> Weight	400 gr/m2	<b>Resistencia al desgarro</b> Tear growth resistance	45/20 daN DIN 53.363
<b>Resistencia a la tracción</b> Tensile strenght	310/210 daN/5cm ISO 1421	<b>Solidez a la luz</b> Fastness to light	ISO 105 B02 7

# AIR \*

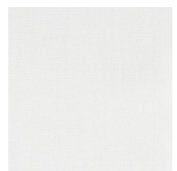
70% Acrílico 30%PES  
Softened



piedra



negro



blanco



arena

<b>Peso</b> Weight	148 gr/m2	<b>Solidez a la luz</b> Fastness to light	7/8
<b>Solidez a la intemperie artificial</b> Colour fastness to artificial weathering	ISO 105-B04:1998 4/5		