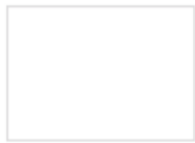


FINISHES

Technopolymer



10
white



11
linen



15
dove grey



17
caramel



81
anthracite



86
graphite



82
light grey



30
orange



40
red



42
geranium red



20
yellow



22
mustard yellow



51
light green



56
olive green



58
sage green



62
light blue



63
air-force blue



60
blue



73
terracotta



72
cocoa



70
bronze



80
black



222
white - dove grey



211
white - orange



212
white - red



221
white - light green



213
white - cornflower blue



214
white - anthracite

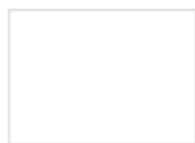
Polycarbonate



100
transparent



315
glossy dove grey



310
glossy white



183
transparent smoked

Post consumer industrial technopolymer

go
green



11
linen



15
dove grey



17
caramel



81
anthracite



22
mustard yellow



56
olive green



58
sage green



63
air-force blue

Wood



FN - 500
natural beech



FS - 501
bleached beech



FW - 502
wenge stained beech



FK - 503
smoke beech



FB
black stained beech



FG - 504
matt grey lacquered beech



FA
matt aquamarine
lacquered beech



HS
bleached ash



HW
white stained ash



HN
blond stained ash



HB
black stained ash
with visible grains



IROKO



RN
natural oak



NR
black stained oak



NC
Canaletto walnut



MS
Sapelli mahogany

Steel



OS
satin brass
finish steel



OM
matt gold finish
steel



BV
vintage bronze
finish steel



NL
glossy black
nickel finish
steel



NO
matt black nickel
finish steel



NB
matt nickel finish
steel



KE
corten effect
steel



CR
chromed steel

Stainless steel



IS
satin stainless
steel



IL
polished stainless
steel

Coated steel



VB
matt white coated
steel smooth finish

Coated steel, embossed finish



VL
matt linen



VT
matt dove grey



VH
matt caramel



VR
matt bronze



VK
matt mocha



VF
matt graphite



VA
matt anthracite
grey



VN
matt black



VY
matt mustard
yellow



VE
matt terracotta



VD
matt olive green



VS
matt sage green



VO
matt air-force
blue

Aluminium



AA
anodised



AL
polished



AV 10
matt white coated,
embossed finish



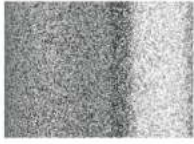
AV 15
matt dove grey coated,
embossed finish



AV 70
matt bronze coated,
embossed finish



AV 81
matt anthracite
grey coated,
embossed finish



AV 84
silver coated,
polished finish

Zinc and matt coated steel, embossed finish

Indoor/Outdoor



ZB
white



ZL
linen



ZT
dove grey



ZA
anthracite



ZY
mustard yellow



ZE
terracotta



ZO
air-force blue



ZP
antique pink



ZV
olive green



ZN
black

Zinc and matt coated steel, embossed finish

Indoor/Outdoor



For Summer and Leo finishes



VB
white



VT
dove grey



VA
anthracite



VM
brick red



VV
willow green



VZ
light blue

Marble

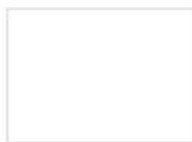


451
Calacatta



452
Sahara Noir

Compact laminate



10
white



82
light grey



81
anthracite



15
dove grey



92
dove-grey spatula effect



93
piacentina stone effect



87
concrete effect



94
slate effect



90
stone effect



91
grit effect



570
dove grey oak



571
beaver oak



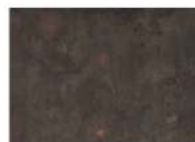
572
Carrara marble effect



574
black marble effect



575
black Sahara marble effect



573
corten effect



95 FENIX
black FENIX opaque surface, anti-fingerprint and soft touch

Galvanized and powder coated steel



ZB
white



ZT
dove grey



ZA
anthracite



ZE
terracotta



ZO
air-force blue



ZV
olive green



ZN
black

Black cork for Dress_Code



SN
black

Printed colours may be different than real ones because of printing or photographic technical reasons.

V5 Chenille

Water repellent



V5 D7



V5 D8



V5 A7



V5 A6



V5 A8



V5 A9



V5 B0

V4 Velvet

Water repellent



V4 45



V4 40



V4 44



V4 46



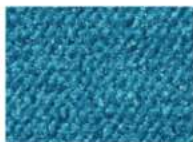
V4 39



V4 38



V4 47



V4 50



V4 48



V4 49

V3 Velvet

Fire retardant



I 11M - UNI 9175

F NF - P 92 503 - M1

I Classe 1 - UNI 9177

D DIN 4102 - B1

EN EN 1021:14 Part.1/2

USA California TB 117:2013

GB BS 5852:06 crib 5

EN IMO MED - Ftp 307 Part.8



V3 60



V3 59



V3 62



V3 58



V3 57



V3 64



V3 63



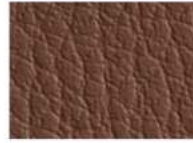
V3 66

Please refer to each model on the price list for matching the fabrics.

EP

Simil-leather

Fire retardant

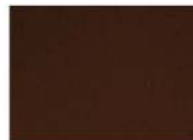
**I** Classe 1,IM (UNI 9175)**EN** EN 1021/1**EN** EN 1021/2**EP 74****EP E0****EP 70****EP 68****EP 73****EP 69****EP 71****EP 75****EP 72****EP E1****CN**

Natural leather

Fire retardant



Available on request

I Classe 1,IM**CN 83****CN A2****CN A1****CN 82****CN 84****WF**

Wool

Fire retardant



Available on request

I Classe 1 IM con schiuma standard ignifuga con densità 25 Kg/cu.m.**EN** EN 1021 Part. 1-2 using a standard foam 20/22 Kg/cu.m.**WF 98****WF 95****WF 97****WF 96**

K Fabric camira

Fire retardant



- I UNI 9175 Classe 1 IM
- EN 1021 - 1 (cigarette)
- EN 1021 - 2 (match)
- GB BS 7176 Low Hazard
- GB BS 5852 Ignition Source 5
- GB BS 7176 Medium Hazard
- F NF D 60 - 013
- A ÖNORM B 3825 & A 3800-1 (58kg/m³ CMHR Foam)
- GB BS 5867 - 2:Type B Curtains & Drapes



K1 90



K1 99



K1 00



K1 F1

L Linen

Certified and CAM compliant



L1 D4



L1 D5



L1 D6

M Fabric

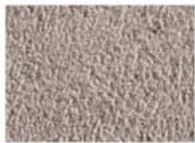
Fire retardant



USA Cal. Tech. Bulletin 117, Section E, Part. 1 (CALIFORNIA TEST)



M1 19



M1 18



M1 17



M1 05



M1 16



M1 20

COM Customer Own Material

Minimum 20 pcs. Fabric to be approved



Please refer to each model on the price list for matching the fabrics.

Fire retardant



- I** Class 1 IM using a standard FR polyurethane foam 25 kg/cu.m density
- EN** EN 1021 Part 1-2 using a CM Foam 30-33 Kg/cu.m.
- USA** Calif.Bull.117 June 2013



Fabric made up of 50% recycled fibers.



WJ F8



WJ F9



WJ G0



WJ G1

TG Fabric

Fire retardant



- I** 11M - UNI 9175
- D** DIN 4102 - B1
- I** Classe 1 - UNI 9177
- USA** NFPA 260 Class 1
- EN** EN 1021 part 1/2
- USA** California TB 117:2013
- F** NF D-60 013 (AM18)
- A** ÖNORM B 3825 - normal brennbar



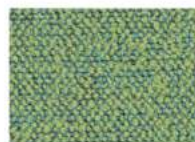
TG F2



TG F3



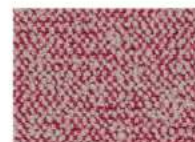
TG F4



TG F5



TG F6



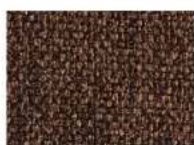
TG F7

T Fabric

Water repellent



T9 E2



T9 E3



T9 79



T9 E4



T9 E5



T9 78



T9 85



T9 E6



T9 E7

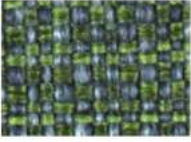


T9 80



T9 E8

T Fabric



T5 26



T5 27

T Fabric

Water repellent



M2 09

T Fabric

Fire retardant



UNI 9175 (CL 1.IM)
UNI B456 (CL 1)
UNI EN 1021 1-2
BS5852 1-2

I Classe 1
USA Calif. Bull. 117 June 2013
GB BS 5852 Crib N.5 using a CM Foam 35 kg/cu.m.
EN EN 1021 Part. 1-2 using a CM Foam 35 Kg/cu.m. Oeko-Tex Standard 100



T6 28



T3 25

T Fabric

Stain resistant



T8 07



T8 08

T4 Fabric

Fire retardant



I Classe 1
D B1 DIN 4102
F M1
GB BS 5852 Crib 5 using a CM Foam 35 Kg/cu.m.

A Q1 (OENORM 3800 Part 1)
A B1 (OENORM B3825)
EN EN 1021 Part. 1-2 using a CM Foam 35 Kg/cu.m.
EN EN 13773 Burning Behaviour: class 1

EN EN 13501 - 1esp. 1,2 : B-s1, d0
USA Calif. Bull. 117 June 2013
EN EN ISO 6940/6941
CH Fire Protection Classification: 5.3



T4 51



T4 A3



T4 53



T4 A4



T4 A5



T4 D9



T4 56



T4 55

Fabric

Fire retardant



for Igloo Chair cushions (Art. 1500) and for Miss B fixed cushions

- I** Classe 1
- USA** Calif. Bull. 117 June 2013
- GB** BS 5852 Crib N.5 using a CM Foam 35 Kg/cu.m.
- EN** EN 1021 Part. 1-2 using a CM Foam 35 Kg/cu.m. Oeko - Tex Standard 100



25

Panama cotton

for Igloo Chair cushions (Art. 1500)



21

Fabric

Stain resistant



for Miss B fixed cushions



07

Fabric

Fire retardant



for Miss B cushions (Art. 1504) and for Miss B fixed cushions

- I** C1 (UNI 9174 - UNI 8456)
- EN** 1021/1-2 cigarette 2 match
- D** B1 (DIN 4102)
- EN** BS 7176 NH (Medium Hazard)
- F** M1 (NF P 92501-7)
- EN** NF D 60013 (AM18)
- GB** CRIB 5 (BS 5852 part II)



32

Simil-leather

Fire retardant



for Miss B fixed cushions

- I** Classe 1, IM UNI 9175
- EN** EN 1021/1
- EN** EN 1021/2



73

OUTDOOR FABRICS

Acrylic

Outdoor use / Water repellent / Stain resistant
Mold resistant / UV resistant / Breathable / Fire retardant



USA California Technical Bulletin 117-203 Sezione 1

USA NFPA 260 Classe 1

EN NF EN 1021-1

GB BS 5852 Part 1 Source 0



S1 B5



S1 B6



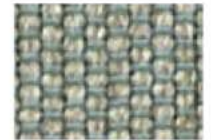
S1 B8



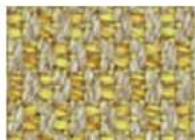
S1 B7



S2 B9



S3 C0



S4 C1



S4 C2



S4 C3



S5 C4



S7 C6



S6 C5

S8 Acrylic

Outdoor use / Water repellent / Stain resistant
Mold resistant / UV resistant / Breathable / Fire retardant



Fabric with 50% recycled Sunbrella® acrylic

USA California Technical Bulletin 117-203 Sezione 1

USA NFPA 260 Classe 1

EN NF EN 1021-1

GB BS 5852 Part 1 Source 0



S8 G6



S8 G7



S8 G8



S8 G9



S8 H0

Acrylic

Outdoor use / Water repellent / Stain resistant



A3 C7



A3 C8



A4 C9



A5 D0

Please refer to each model on the price list for matching the fabrics.

TD Fabric

Outdoor use / Fire retardant



GB BS 5852: 1979 source 0 (cigarette test)

EN EN 1021-1 (cigarette test)

USA CAL TB-117 & NFPA 260



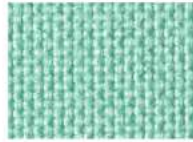
Organic fabric for outdoor use,
made of recycled polypropylene.



TD G2



TD G3



TD G4



TD G5

A6 Acrylic

Outdoor use / Water repellent / Stain resistant



A6 D1



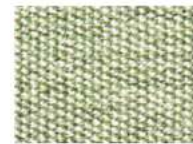
A6 D2



A6 D3



A6 86



A6 89

WP Acrylic

Outdoor use / Waterproof



WP 87



WP 88



WP 86

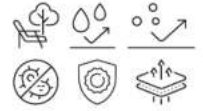


WP 89

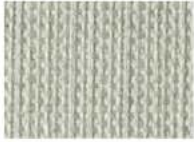
A7 / A8

Acrylic (agora)

Outdoor use / Water repellent / Stain resistant
Mold resistant / UV resistant / Breathable



Fabric with both recycled and virgin fibers.



A7 H1



A7 H2



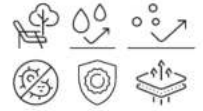
A8 H4



A8 H3

A9 Acrylic (agora)

Outdoor use / Water repellent / Stain resistant
Mold resistant / UV resistant / Breathable



A9 H6



A9 H5

A2 Acrylic Dralon® Acrisol

Outdoor use / Water repellent / Stain resistant



A2 H7



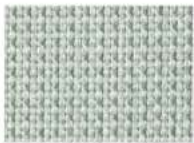
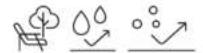
A2 H9



A2 I0

A0 Acrylic Dralon® Acrisol

Outdoor use / Water repellent / Stain resistant

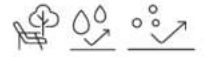


A0 H8

Please refer to each model on the price list for matching the fabrics.

Acrylic Dralon®

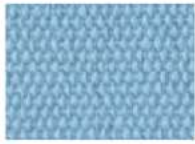
Outdoor use / Water repellent / Stain resistant



for Si-Si, Si-Si Barcode, Si-Si Dots cushions



B1



B2



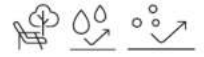
B3



B4

Acrylic

Outdoor use / Water repellent / Stain resistant



for Summer chair and armchair cushions (Art. 1495)

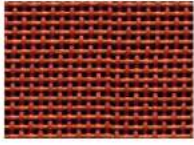


10

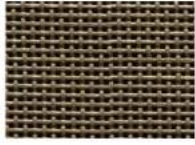
SYNTHETIC MATERIALS

Synthetic Fabric Serge Ferrari group

Outdoor use / Breathable / Water repellent



T73
terracotta



T75
mud



T96
slate

Synthetic Fabric

Outdoor use / Breathable / Water repellent



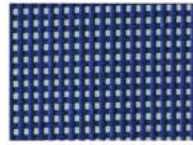
T10
white



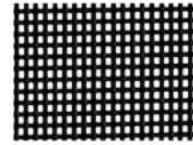
T15
dove grey



T16
honey



T60
blue



T81
anthracite

Nautical rope

Outdoor use



for Lisa Filò weaving

100% recyclable polyester, dope-dyed, non-toxic, resistant and easy to maintain.



N84
silver



N81
anthracite



N80
black



N15
dove grey



N30
orange



N57
mint

Extruded pvc reinforced with nylon wires

Outdoor use



for Lisa Club weaving



P10
white



P86
graphite



P74
biscuit



P73
terracotta



The qualities of responsibility and environmental sustainability in industrial production are a green hope for the future of all of us. Contributing to the process of recycling materials and a production method that respects the environment and keeps it clean is also possible in the production and moulding of technopolymers.

All the S•CAB production is made with 100% recyclable materials as their individual components can quickly be sorted for disposal.

Every plastic element has the identification mark according to ISO11469:2001, and provides easy directions for recycling.

All materials used by S•CAB for its production are of first quality.

PLASTICS – S•CAB uses techno-polymers with ideal characteristics to manufacture its products, polymeric materials that ensure sturdiness, stability, non-toxicity, resistance to atmospheric agents including mould, dust and smog, and resistance to UV rays. All our techno-polymers are 100% recyclable in full respect for the environment. **For cleaning** use neutral liquid soap diluted in water. Clean with a soft damp cloth to avoid scratches, by all means refrain from using abrasive sponges. Do not use abrasive or chlorine-based products, or solvents in general such as alcohol, benzene, acetone, trichloroethylene, ammonia etc., because these substances tarnish plastic surfaces.

METALS | STEEL – Only the highest quality steels are used and a strict control on mechanical resistance values is applied throughout the whole manufacturing process.

METALS | ALUMINIUM – Aluminium is a metal that combines lightness and great strength, and its surface is anodised or polyester powder coated to ensure superior resistance to corrosion. **For cleaning.** Use only a soft damp cloth to clean steel, aluminium or coated metal surfaces. Do not use abrasive creams or pastes to clean metals and do not use solvents. We recommend that by all means you refrain from using abrasive sponges or steel wool to clean the surfaces.

WOOD – S•CAB furniture items with wooden shell and/or Frame are manufactured in compliance with European standards, with full respect for the environment. **For cleaning** use only a soft suiting damp cloth and warm water and dry immediately with a soft, dry suiting.

Do not use abrasive or aggressive products, chlorine based products and solvents in general. (ammonia, bleach or cleaning products containing acid). Immediately mop up any spilt liquids with a clean dry cloth, wood does not stand the humidity.

Do not expose to direct sunlight. Do not expose to sources of heat.

Wood is a natural material and shall be subject to change color when exposed to sunlight. Wood is a natural raw material; this means that you cannot guarantee the homogeneity and uniformity of synthetic materials. Even elements made from the same plant may show colour differences. Colour variations or imperfections, due to the fibres or veins of wood, are a guarantee of the quality of solid wood and constitute its uniqueness. The colours of our woods are water-based, to respect the environment and health.

FABRICS – **For instructions** on how to clean fabrics, please refer to the specific data sheet. For everyday cleaning do not brush, but vacuum clean regularly, avoiding applying pressure to the fabric. For light stains, use a soft damp brush, using if necessary mild detergents or white vinegar diluted in a lot of water. **Do not use abrasive products or detergents or solvents. Do not use high pressure steam washers.**

SIMIL-LEATHER – **For cleaning.** For everyday cleaning, use a soft, damp cloth. For more stubborn dirt, use a soft sponge with water and soap. Do not use abrasive products or detergents or solvents for cleaning. Immediately mop up any spilt liquids with a clean dry cloth.

Some dyes for clothing and accessories (e.g., jeans) may migrate to the light colours of this item. This phenomenon increases with humidity and temperature. We take no responsibility for colour transfer caused by external contaminants.

LEATHER – S•CAB uses only natural vegetable tanned leather for its upholstered seats. For everyday cleaning, use a soft dry cloth. For more stubborn dirt, use a soft damp cloth. Do not use abrasive products or detergents or solvents for cleaning.

CORK – Cork is a 100% eco-friendly, natural, and recycled material; it is soft, elastic, insulating, with fire retardant properties, and can be used both outside (using the same precautions and the same maintenance as wooden products) and inside.

For cleaning, use a damp, non-abrasive cloth. Do not use aggressive products because the material absorbs and it could damage it.