



# LA CASA DEI LIMONI

CONSERVATORIES COLLECTION

EXCLUSIVE CONSERVATORIES  
IN CLASSIC AND  
CONTEMPORARY STYLE



WE TAKE CARE OF ANY DESIGN  
PRODUCTION AND LOGISTICAL  
ASPECT FOR A TAILORMADE AND  
TURNKEY OPERATIONAL SERVICE



WE OPERATE INTERNATIONALLY AS  
A PROFESSIONAL REFERENCE FOR  
ARCHITECTS AND INTERIOR DESIGNERS



## BRAMANTE

*A praise to harmony.*

*Solemn and majestic, Bramante expresses with awareness those inspirations and ambitions that define the entire collection.*

*A majestic shape, enhanced by classical proportions, and a precise architectural taste characterize the Renaissance style of this winter garden. Once again, the subtle decorations and materials convey the structure towards more contemporary horizons.*

*Modularity and transparency play a fundamental role in lightening the grandeur of the gable; the result is spatial continuity consisting of harmonious balances.*











## BRAMANTE ESSENTIAL

*A clear reference to the shape, elegance and homogeneity of classical architecture.*

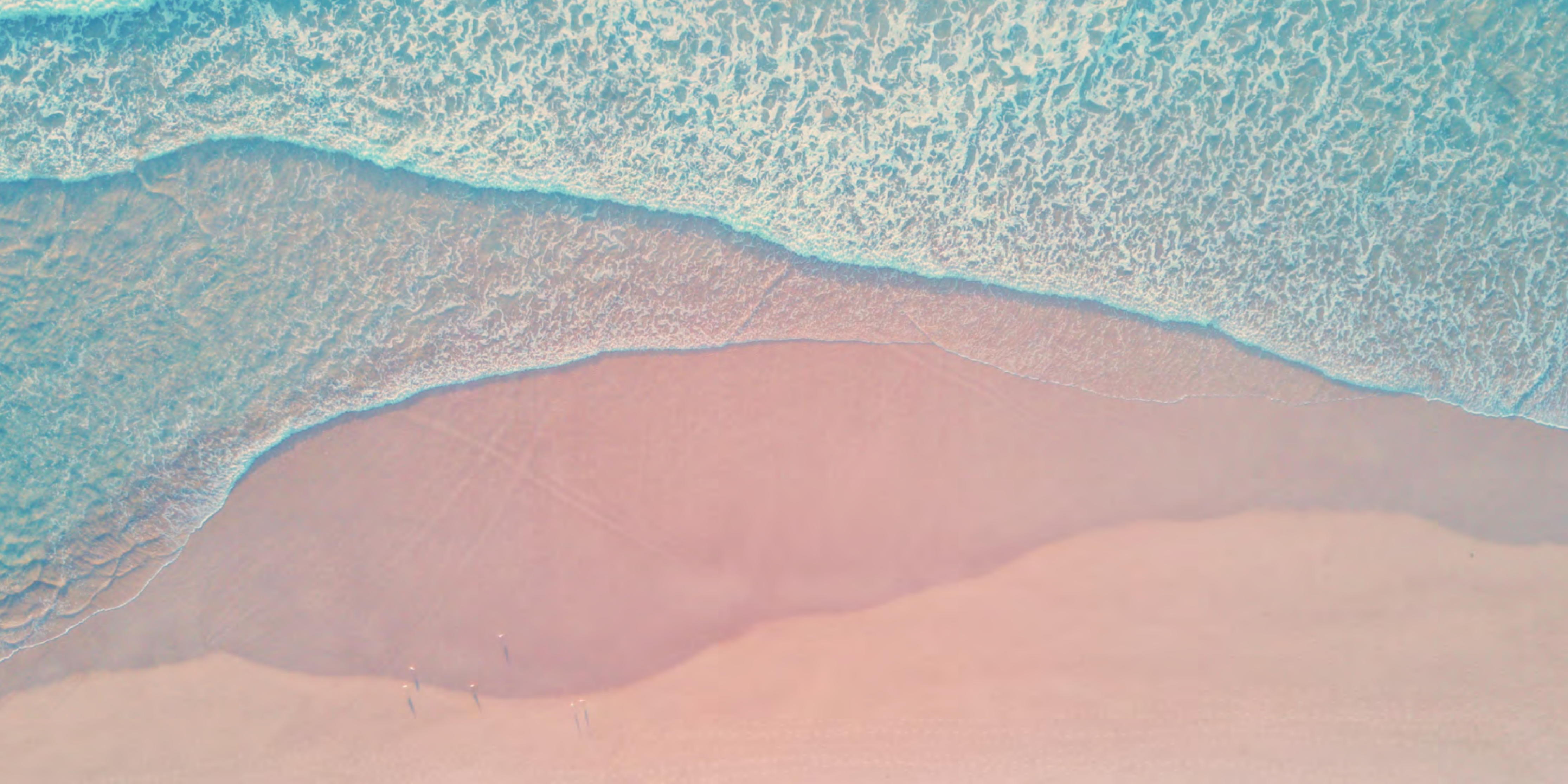
*Bramante Essential displays itself with an important scenic presence, in which the harmony and objectivity of proportions express, in a contemporary key, all the rationality of classical style.*

*This rationality is also reflected in the structure of the roof, here shown in its most essential version made up of symmetries and geometries enhanced by the contrast between the materials used.*

*Glass, once again the protagonist of the structure, widens spatial perceptions with its transparencies giving a sense of openness and continuity to the interior and the outdoor environments.*

*Steel designs the facades and the roof: a game of balanced perspectives, volumes and symmetry for an aesthetic result which challenges time. A Renaissance spirit updated by details and sober contrasts.*





## BERNINI

*Large windows and light profiles mark the modularity of this structure. Rationality is updated by the essential lines of a modern design.*

*The dominant aspect of Bernini is its lightness and its impetus towards the sky.*

*Aesthetic research that takes the form of transparencies, exclusive materials and refined decorative elements, such as the pillar and the cornice, to give a clear and immediate design to the entire structure.*

*A special feature of this model is the central lantern which, in rising upwards, determines two different roof heights. The geometry of the decorations which design the facade finds its harmonious balance in the rounded shapes of the pillars.*

*The presence of glass blurs the limits of space, giving the model a non-invasive appearance and allowing the eye to move freely and unobstructed in a harmonious continuity between inside and outside.*











## BRUNELLESCHI

*The aesthetics of this structure recalls Brunelleschi's Renaissance architecture and re-proposes, in a modern key, the modularity of the arches. A sense of harmony and lightness, conveyed and enhanced by the curved glass which dominates the whole.*

*Steel and glass are the outstanding protagonists of the structure: they create light and shadow effects in a refined atmosphere and give the structure a light and luxurious look.*

*A real hymn to outdoor life, to enjoy the outdoor environment from a privileged point of view.*

*The Brunelleschi model proposes a new definition of space and orderliness and this structure is a clear reference to such Renaissance precision. Small arch, columns, capitals and cornice: each single element is part of the harmonious modularity of a sober and majestic structure.*

*With its classic spirit, Brunelleschi expresses the contemporary luxury of living our time. A real outdoor room where the continuity between inside and outside becomes a distinctive element and added value for one's own well-being.*





## BRUNELLESCHI ESSENTIAL

*The comfort of a structure that makes essentiality its strength.*

*The rigour of the proportions of the vertical facades is contrasted by the presence of the curved elements which design the roof. This contrast gives rise to an intimate atmosphere which opens onto the harmony of the surrounding environment.*

*A game of aesthetics and transparencies, modulated to recall the concept of Renaissance harmonic perfection. The aim is to design a space full of comfort, where inside and outside appear in continuity with each other and where time acquires a new value.*

*A structure that is inspired by and respects the rationality of proportions and, thanks to the most modern combination of steel and glass, naturally expresses the search for simplicity and lightness.*









## BIOCLIMATIC PERGOLAS

*Scenic presence and functionality declined in two unique styles.*

*The perfect balance between the solemn elegance of classical culture and modern lightness.*

*Aesthetic value combines with the technological aspect of the roof: a solution which permits using the underlying space without the limits imposed by weather conditions. Made up of adjustable slats that spin around or collect up on one side by means of a retractable pantograph system, and which provide protection against the sun, air recirculation and, when closed, complete shelter from the rain.*

*Customizable in every detail, the structure can also be delimited by sliding or folding perimeter windows.*

### PALLADIO

*Sophisticated decorations characterize every element of the structure, covering it with sober refinement.*

*The Palladio style is characterized by round pillars and precious chrome-plated lines which accentuate shapes and convey solemnity to the structure.*







## BIOCLIMATIC PERGOLAS

### BRAMANTE

*The Bramante style, with its squared columns, is enhanced by elegant decorations that form exquisitely classic designs.*

*Once again, this structure expresses a sober balance of spaces and volumes, combining the essentiality of a contemporary style with classic-inspired details.*

*Moreover, it is possible to combine both the pergola and the conservatory in Bramante style thus creating a completely functional outdoor made up of a emphasized refinement.*









## SKYLIGHT

*An iconic space.*

*A privileged point of view of the outside world.*

*An indoor pool with a view of the sky: this is an example of the exclusive luxury which the creation of a skylight can produce.*

*Completely customizable, both in style and construction, the glass and steel roofs are designed to complete home interiors in a unique way. In this model, the style of the roof is the same as that which characterizes Brunelleschi's buildings: Renaissance spirit combines with the classicism of the environment, giving a fresh touch thanks to its essential lines and the choice of thin profiles.*

*The transparency of the roof recreates light effects during the day and a view of the starry sky in the evening: suggestive and intimate atmospheres to give a new value to your time.*

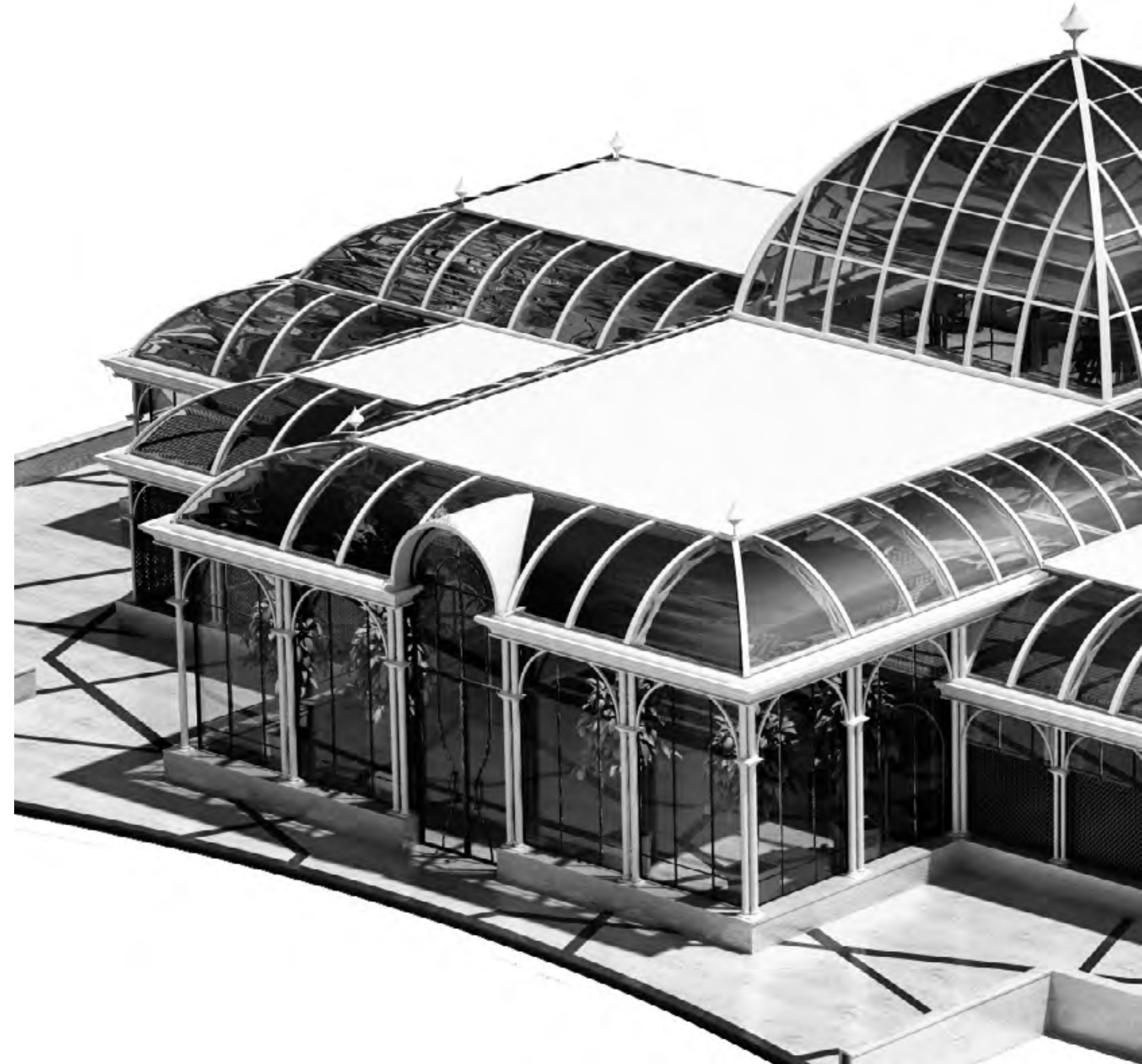
*This is the very essence of comfort, a temple of well-being where style, elegance and functionality recreate a sophisticated environment.*

*The creation of a skylight is a veritable expression of luxury well-being.*



## SOME PROJECTS

*These are just some of the most symbolic creations of La Casa dei Limoni. Suggestive outdoor spaces conceived in Italy and made all over the world. Customized solutions that meet the taste, style and needs of a demanding clientele.*





**BRAMANTE ESSENTIAL**  
 GOLF CHATEAU DE MAINTENON  
 Arch. Gaudenzi Marco and Arch. Ferretti Luca  
 Restaurant  
 Paris - France  
 2020

**BRAMANTE ESSENTIAL**  
 22 SRL  
 Arch. Gaudenzi Marco and Arch. Ferretti Luca  
 Restaurant  
 Salerno - Italy  
 2019

**CUSTOM**  
 PRIVATE CLIENT  
 Arch. Gaudenzi Marco and Arch. Ferretti Luca  
 Sitting room  
 Doha - Qatar  
 2019

**CUSTOM**  
 PRIVATE CLIENT  
 Arch. Gaudenzi Marco and Arch. Ferretti Luca  
 Reading room  
 Cluj - Romania  
 2018

**BERNINI**  
 PRIVATE CLIENT  
 Arch. Gaudenzi Marco and Arch. Ferretti Luca  
 Sitting room  
 Tirana - Albania  
 2018

**CUSTOM**  
 PRIVATE CLIENT  
 Arch. Angelo Brambilla  
 Office  
 Geneva - Switzerland  
 2017

**CUSTOM**  
 ASPIRE ZONE  
 Mike & Oliver  
 Restaurant  
 Doha - Qatar  
 2015





LA CASA DEI LIMONI  
CONSERVATORIES COLLECTION

*part of*

**DFN**  
THE OUTDOOR COMPANY

DFN srl - Italy  
*via D. Albertario 50 - 61032 - Fano (PU)*  
*T. 00 39 0721 1835821*

*e-mail: [info@dfnsrl.com](mailto:info@dfnsrl.com)*

[www.dfnsrl.com](http://www.dfnsrl.com)

*part of*

**DFN**  
THE OUTDOOR COMPANY

[www.dfnsrl.com](http://www.dfnsrl.com)