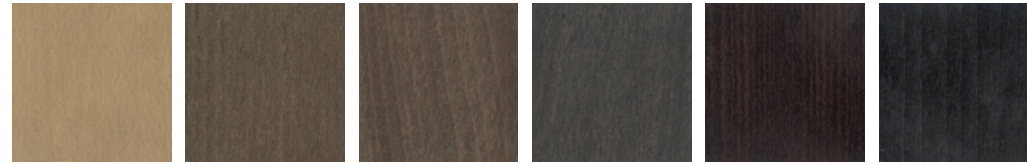


Indoor
finishes.

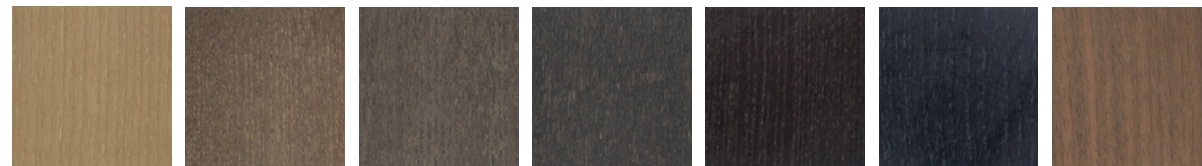
Indoor

FAGGIO / BEECH



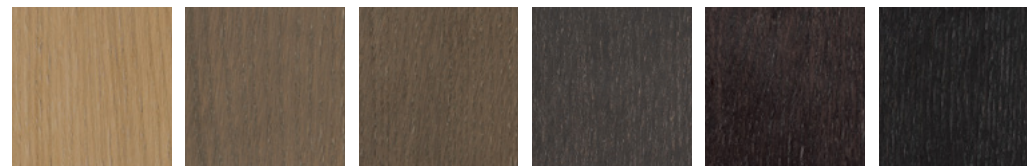
BV Anilina beige \ Beige aniline
 UD Biscotto \ Biscuit
 TM Moka \ Moka
 TZ Grigio plumbeo \ Dark grey
 TT Wengé \ Wengé
 15 Carbone \ Carbon

FRASSINO / ASH



SG Anilina beige \ Beige aniline
 SC Biscotto \ Biscuit
 HJ Moka \ Moka
 HK Grigio plumbeo \ Dark grey
 HL Wengé \ Wengé
 HP Carbone \ Carbon
 SN Noce \ Walnut

ROVERE / OAK



UH Anilina beige \ Beige aniline
 UC Biscotto \ Biscuit
 TD Moka \ Moka
 TA Grigio plumbeo \ Dark grey
 TY Wengé \ Wengé
 RQ Carbone \ Carbon

ESSENZE SPECIALI / SPECIAL ESSENCE



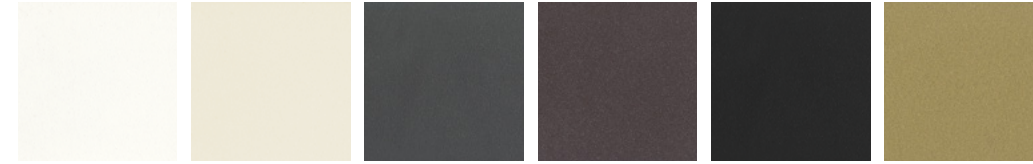
ES Noce Canaletto \ Canaletto walnut
 EK Mogano tinto noce \ Walnut stained mahogany

LACCATI OPACHI / MATT LACQUERED



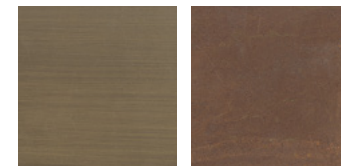
13 Bianco \ White
 HB Rubino \ Ruby red
 08 Nero \ Black

METALLI VERNICIATI / LACQUERED METALS



Bianco goffrato \ White embossed
 Bianco perla goffrato \ Pearl white embossed
 Antracite goffrato \ Anthracite embossed
 Aval goffrato \ Aval embossed
 Nero goffrato \ Black embossed
 Oro \ Gold

METALLI SPECIALI / SPECIAL METALS



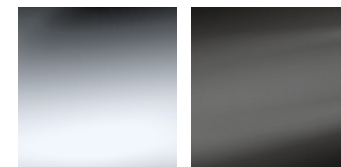
Ottone brunito \ Bronzed brass
 Corten \ Corten

INOX / INOX



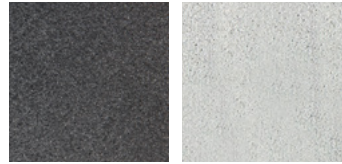
Satinato \ Satin

METALLI CROMATI / CHROME METALS



Cromato \ Chrome
 Cromo nero \ Black chrome

QUARZO RESINATO / RESINATED QUARTZ



Antracite \ Anthracite Light Grey \ Light Grey

GRÈS PORCELLANATO / LAMINATED PORCELAIN



Ossido nero \
Black oxide

HPL / HPL



Antracite \ Anthracite

CERAMICA / CERAMIC



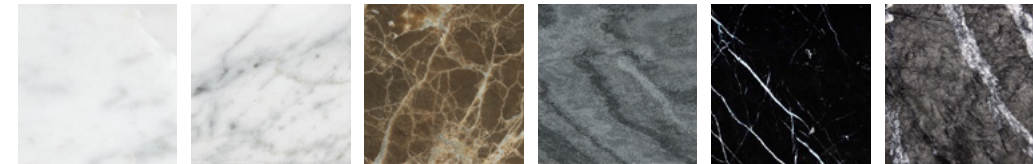
Cioccolato \
Chocolate Pesca \ Peach Grigio sabbia \
Sand grey

VETRO TEMPERATO / TEMPERED GLASS



Float trasparente \
Transparent float Bronzato \ Bronzed Retro verniciato nero \
Black back-painted

MARMI / MARBLES



Bianco Carrara lucido \
Glossy White Carrara Bianco Carrara opaco \
Matt White Carrara Dark Emperador \
Dark Emperador Iron Silver \
Iron Silver Nero Marquina \
Nero Marquina Grigio Carnico \
Grigio Carnico

CORDE / ROPES



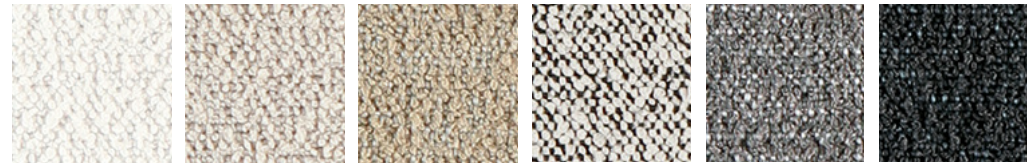
A6C F7E - F8F
Cuoio \ Hide leather Gassa testa di moro \
Gassa dark brown

CORDA NAUTICA / NAUTICAL ROPE

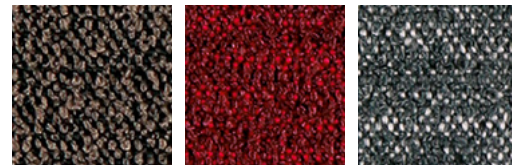


F7F
Canapa \ Hemp

AIDA (CAT. 1) - 68% PL, 32% PP



A2D Bianco A2E Beige A2F Sabbia A2G Pepe A2H Grigio A2I Antracite

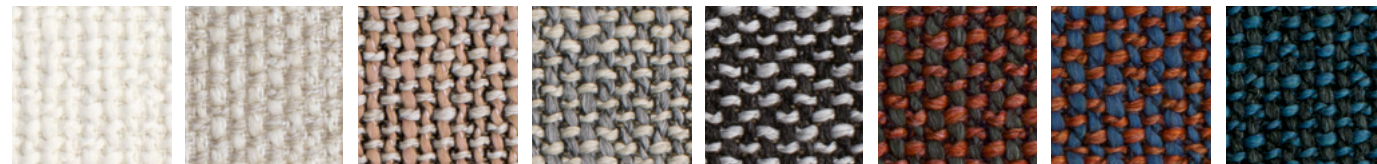


A2J Tronco A2K Rubino A2L Petrolio

Martindale : >135.000 cicli/rubs
 Light fastness : >6
 Fire tests : IIM-UNI 9175 / Classe I-UNI 9177 / EN 1021 Part 1/2 /
 DIN 4102-B1 / NFPA 260 Class 1 / NF D-60 013-A18 / CAL TB 117:2013 /
 IMO MED-FTP 307 Part 8 / Önorm B 3825
 Main characteristics : IMO-MED / Sound absorbent

Technical features:
 Care:

ARTE (CAT. 1) - 68% PC, 16% PL, 16% CO



A1D Bianco A1J Beige A1E Rosa A1F Grigio chiaro A1H Pepe A1G Verde mattone A1L Blu arancio A1K Blu oltremare

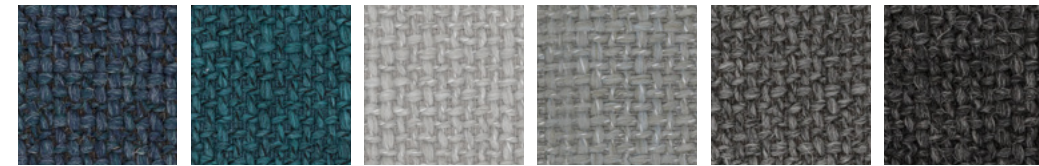
Martindale : 35.000 cicli/rubs
 Light fastness : 5
 Fire tests : CAL TB 117:2013 / BS 5852 Cigarette / BS 5852 Match / EN 1021 Part 1/2

Technical features:
 Care:

ALBA (CAT. 1) - 45% PC, 33% PL, 22% WO



D6B Burro D6C Beige D6D Tortora D6E Tronco D6F Tabacco D6G Rubino



D6H Blue D6I Petrolio D6J Light grey D6K Argento D6L Antracite D6M Nero

Martindale : 40.000 cicli/rubs
 Light fastness : 5
 Fire tests : CAL TB 117:2013 / BS 5852 Cigarette

Technical features:
 Care:

BETTY (CAT. 2) - 33% PL, 25% PC, 23% VI, 10% CO, 9% LI

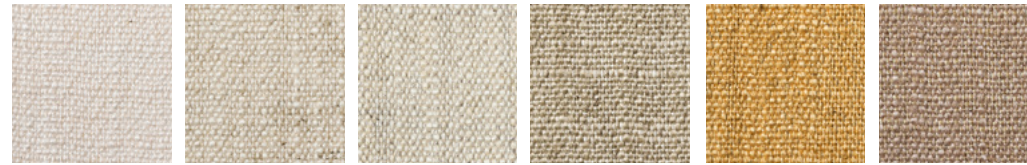


A9K Bianco A9L Beige A9M Grigio chiaro A9N Nocciola A9P Antracite A9Q Nero

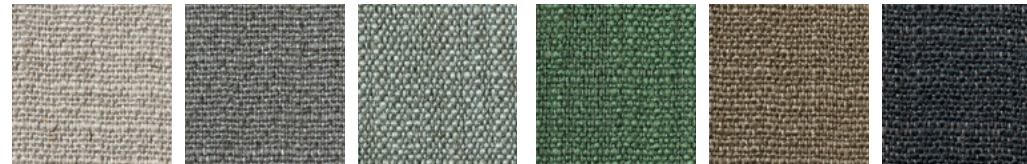
Martindale : 50.000 cicli/rubs
 Light fastness : 5/6
 Fire tests : CAL TB 117:2013 / BS 5852 Cigarette

Technical features:
 Care:

BALDO (CAT. 2) - 34% VI, 31% CO, 15% LI, 13% PC, 7% PL



B7A Bianco B7B Beige B7C Avorio B7D Tortora B7E Ocra B7F Rosa



B7G Grigio chiaro B7H Grigio scuro B7I Light blue B7J Bosco B7K Nocciola B7L Antracite

Martindale : 25.000 cicli/rubs
 Light fastness : 5/6
 Fire tests : CAL TB 117:2013 / BS 5852 Cigarette

Technical features:

Care:

BLISS (CAT. 2) - 67% VI, 33% LI

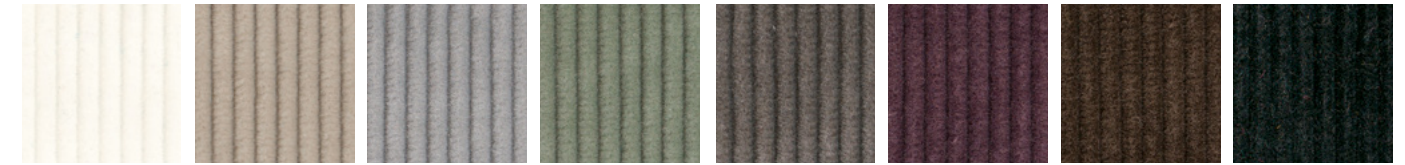


H1X Bianco H1Y Panna H1Z Beige H1W Nocciola

Martindale : > 20.000 cicli/rubs
 Light fastness : 4/5

Care:

BRERA (CAT. 2) - 100% CO



A4D Bianco A4E Beige A4J Grigio A4G Salvia A4K Tortora scuro A4I Lilla A4F Tronco A4H Antracite

Martindale : 40.000 cicli/rubs
 Light fastness : 4/5
 Fire tests : CAL TB 117:2013 / BS 5852 Cigarette / BS 5852 March

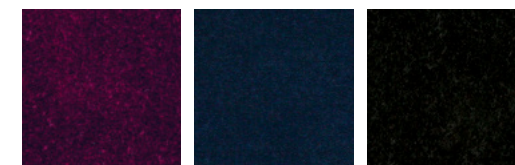
Technical features:

Care:

BRIDGE (CAT. 2) - 100% TREVIRA® CS



A3D Bianco A3E Panna A3F Grigio A3G Antracite A3H Salvia A3I Mattone



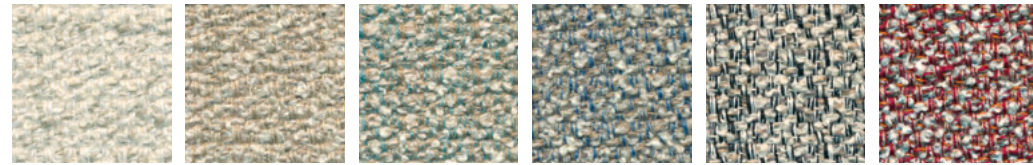
A3J Prugna A3K Blu oltremare A3L Nero

Martindale : 100.000 cicli/rubs
 Light fastness : >5
 Fire tests : CAL TB 117:2013 / UNI 8456 - 9174 classe 1 / UNI 9175 Classe 1IM / EN 1021 Part 1/2 / BS 5852 CRIB 5 / DIN 4102 - B1 / IMO FTP CODE 2010 NF P 92 503-507 M1 / UNI EN 13773:2004 classe 1 / NFPA 701:2015
 Main characteristics : Sound absorbent

Technical features:

Care:

CALLA (CAT. 3) - 5% CO, 25% VI, 13% LI, 15% WO, 25% PL, 15% PC, 2% PA



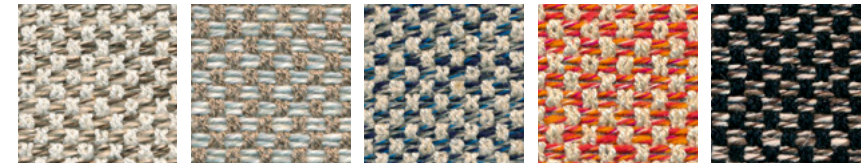
A8L Panna A8M Sabbia A8N Smeraldo A8P Celeste A8Q Pepce A8R Rubino

Martindale : 45.000 cicli/rubs
 Light fastness : 4/5
 Fire tests : CAL TB 117:2013 / BS 5852 Cigarette / BS 5852 Match

Technical features:

Care:

CIELO (CAT. 3) - 47% CO, 18% LI, 35% VI



A6H Panna A6K Sabbia A6I Blu oltremare A6L Mattone A6J Tronco

Martindale : 50.000 cicli/rubs
 Light fastness : 4/5
 Fire tests : BS 5852 Cigarette / BS 5852 Match / CAL TB 117:2013

Technical features:

Care:

CELIA (CAT. 3) - 68% PL FLAME RETARDANT, 32% PL FR



D7A Avorio D7B Nude D7C Argilla D7D Testa di moro D7E Arancio D7F Ruggine D7G Fragola D7H Prugna



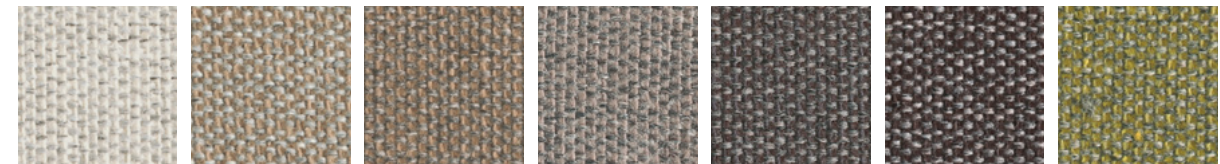
D7I Oro D7J Salvia D7K Bosco D7L Ottanio D7M Bluette D7N Grigio D7P Nero

Martindale : 48.000 cicli/rubs
 Fire tests: CAL TB 117:2013 / B1 DIN 4102, Part 1 / BS 5852 Cigarette / BS 7176 / M1 NFP902-503-504-505 / IMO 8 Upholstery
 Sustainability: Yarns certified Oeko-tex / Greenguard gold certification
 Main characteristics: Stain repellent finish

Technical features:

Care:

CORE (CAT. 3) - 59% PL, 25% PC, 16% CO

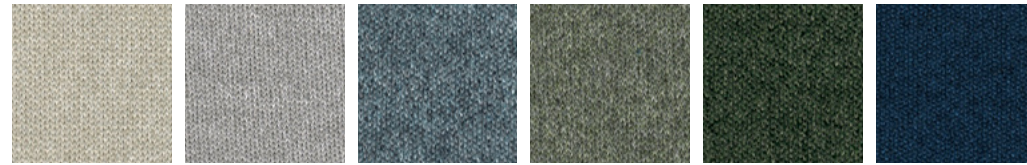


E1T Ghiaccio E1W Paglia E1Y Senape E1Z Marrone chiaro E1V Talpa E1X Testa di moro E1U Fieno

Martindale : 30.000 cicli/rubs
 Light fastness : 5

Care:

CORTINA (CAT. 3) - 100% PES FR



A9E Beige A9F Grigio A9D Avio A9B Salvia A9A Bosco A9C Blu oltremare



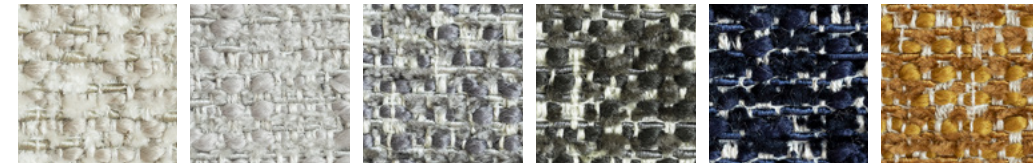
A9H Senape A9J Mattone A9I Terracotta A9G Antracite

Martindale : 50.000 cicli/rubs
 Light fastness : 6/7
 Fire tests: BS 5852 Cigarette / BS 5852 Match / EN 1021 Part 1/2 /
 BS 7176 Low hazard / CAL TB117:2013 / NFPA 260 /
 IMO Annex 1 Part 8 / UNI 9175 1IM / NFD 60 013 /
 DIN 4102 B2
 Sustainability: Standard 100 by Oeko-tex
 Main characteristics: Reach approved chemicals and dyes / Biocide and PFCs free /
 Zero-waste production / Acoustic certificate: EN ISO 354

Technical features:

Care:

CROSS (CAT. 3) - 48% PL, 21% PC, 15% CO, 11% VI, 5% LI



A2M Avorio A2N Perla A2P Grigio chiaro A2Q Antracite A2R Blue A2S Oera



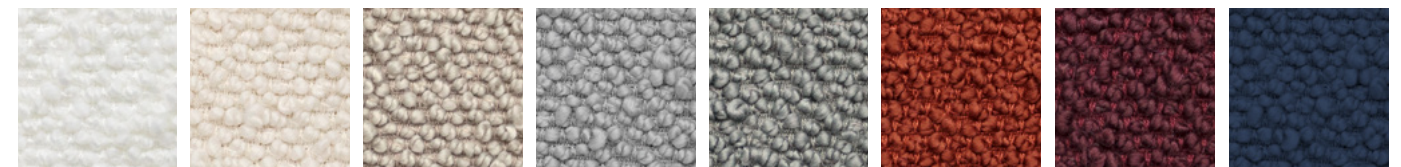
A2T Salvia A2U Light blue A2V Rosa

Martindale : 50.000 cicli/rubs
 Light fastness : 5/6
 Fire tests: BS 5852 Cigarette / CAL TB 117:2013

Technical features:

Care:

DAFNE (CAT. 4) - 100% TREVIRA® CS



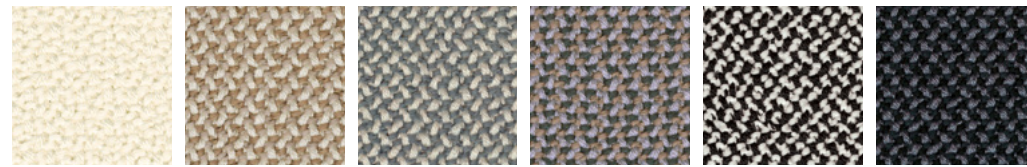
B2A Bianco B2B Panna B2C Sabbia B2F Grigio B2G Antracite B2D Mattone B2H Rubino B2E Blu oltremare

Martindale : 170.000 cicli/rubs
 Light fastness : 5
 Fire tests: Classe 1-IM / BS 5852 Cigarette / BS 5852 Match / CAL TB 117:2013 /
 UNI 9177 - Classe 1 / EN 1021 Part 1/2 / DIN 4102 B1 /
 IMO MSC 307(88) Annex 1 Part 7-8 / NFP 92-503-507 M1

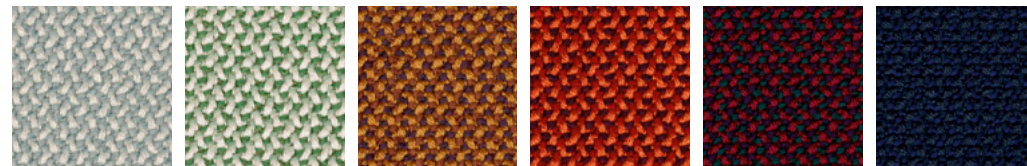
Technical features:

Care:

DALÍ (CAT. 4) - 95% WV, 5% PA



C6U Bianco C6V Sabbia C6K Grigio C6Q Fango C6M Pepe C6L Antracite



C6I Grigio chiaro C6N Salvia C6H Senape C6T Arancione C6P Rubino C6S Blue navy

Martindale : 100.000 cicli/rubs

Light fastness : ≥ 5

Fire tests: CAL TB 117:2013 / EN 1021 Part 1/2 / UNI 9175 IIM / ÖNORM B1-Q1 / IMO 2014-90-EU Marine Equipment Directive (MED)

Main characteristics: Sound absorbent / Natural, renewable material /

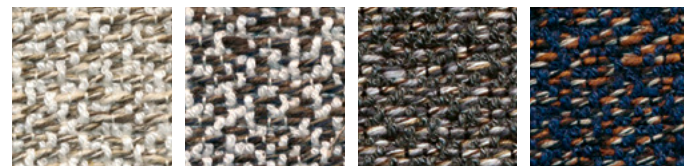
RAL-UZ 117 Attachment 2+3 / IWTO Guidelines for Wool Sheep Welfare /

FR-free / AB 2998 (US export standard) / REACH (EU export standard) / Naturally stain resistant

Technical features:

Care:

DELTA (CAT. 4) - 50% CO, 33% VI, 17% LI



B1C Panna melange B1D Tronco melange B1E Antracite melange B1F Blu mattone

Martindale : 35.000 cicli/rubs

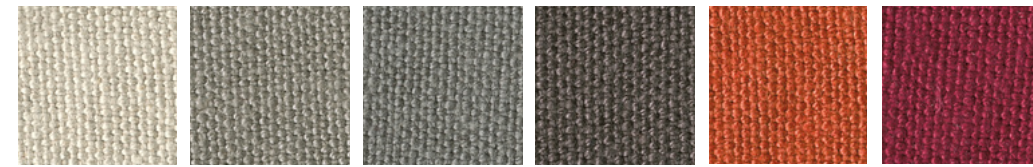
Light fastness : 4/5

Fire tests: BS 5852 Cigarette / BS 5852 Match / CAL TB 117:2013

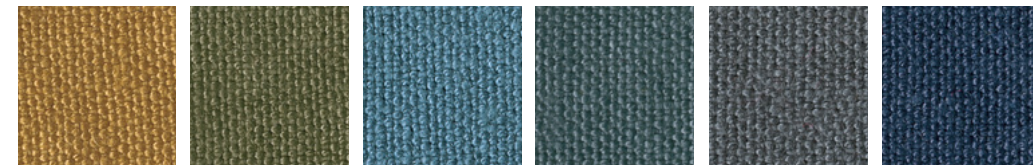
Technical features:

Care:

DOLINO (CAT. 4) - 100% LI



C8D Sabbia C8F Antracite C9U Tortora C8K Grigio C9M Arancione C9G Rosso



C8M Senape C8P Verde oliva S2C Celeste C8S Denim C9V Grigio scuro C8Y Blu scuro

Martindale : > 25.000 cicli/rubs

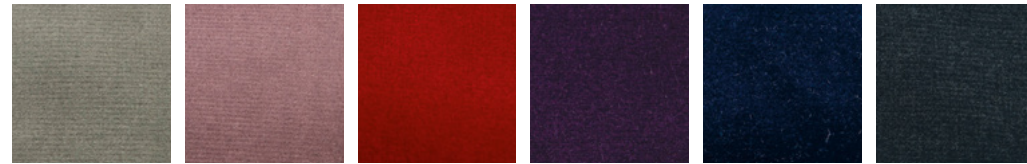
Light fastness : 4/5

Care:

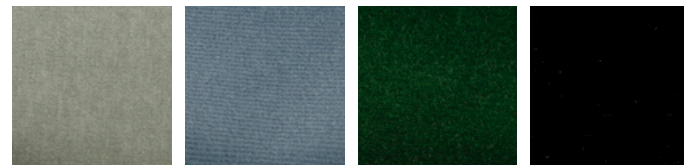
DORO (CAT. 4) - 100% CO



H2H Crema H3E Ocre H3D Argilla H3C Sabbia H2J Nocciola H3F Ruggine



H3J Grigio H3H Lilla H3G Rosso imperiale H3I Prugna H2N Notte H2L Antracite

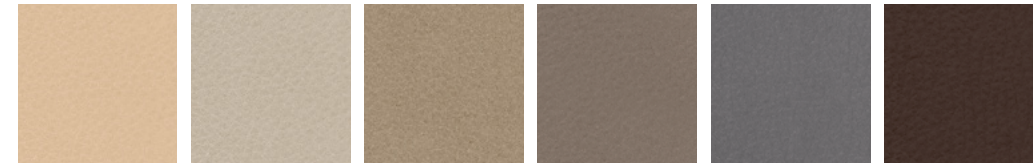


H3L Salvia H3A Celeste H3M Bosco H3B Nero

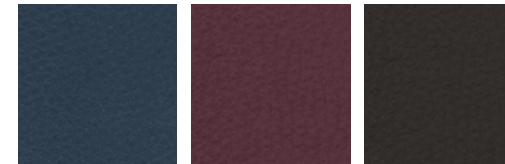
Martindale : 100.000 cicli/rubs

Care:

FLAMINGO B (CAT. 2) - 10% CO, 20% PES, 1% PU, 69% PVC



Q1D Beige Q1C Ecre Q1F Nocciola Q1A Tortora scuro Q1E Grigio scuro Q1G Mogano



Q1I Blu notte Q1H Bordeaux Q1B Nero

Martindale : 100.000 cicli/rubs

Light fastness : 7

Fire tests: UNI 9175 11M / IMOMED / IMO-FTP / CAL TB 117:2013 / EN 1021 Part 1/2

Main characteristics: Phtalate free / Antibacterial

Technical features:

Care:

FALABELLA (CAT. 3) - 63% PU, 29% CO, 8% PES



KN Panna KP Beige PM Tortora chiaro PF Grigio chiaro PG Antracite YA Verde oliva KV Bronzo KU Marrone testa di moro

Martindale : 150.000 cicli/rubs

Light fastness : 5/6

Fire tests: UNI 9175 11M / EN 1021 Part 1/2 / BS 5852 CRIB 5 / BS 5852 Cigarette /

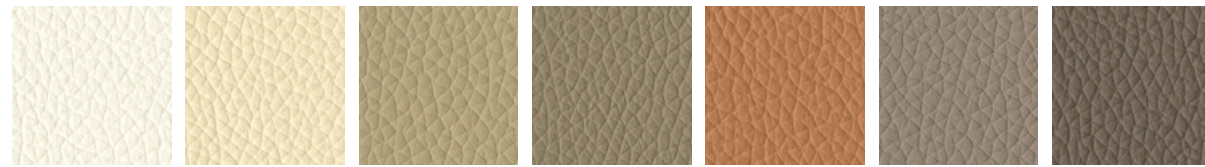
BS 5852 Match / IMO FTP CODE 2010 / CAL TB 117:2013 / ÖNORM B 3825

Main characteristics: Waterproof / Resistance to mould and bacteria / Phthalates free

Technical features:

Care:

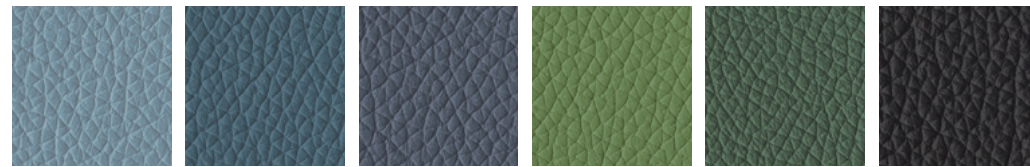
GEO (CAT. A) - PELLE / LEATHER



P2A Panna P1B Grano P1D Beige scuro P1K Nocciola P2C Ruggine P2D Tortora P1M Tronco



P1T Terracotta P1V Rosso P1W Bordeaux P1N Noce P2N Melanzana P2G Grigio scuro P2H Marrone scuro



P2Q Celeste P2S Blu cadetto P2T Blu prussia P3B Verde chiaro P3C Verde P2F Nero

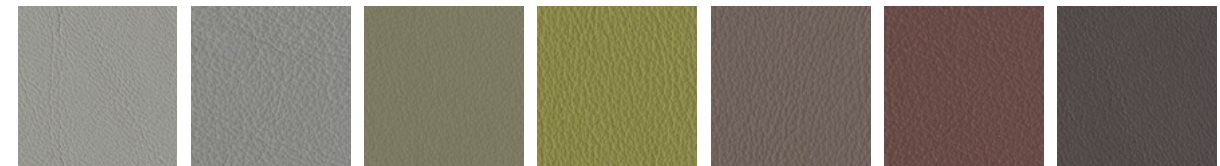
Raw hide: Bovino europeo \ European bovine
 Surface: Fiore corretto \ Corrected grain
 Thickness: 0,9 - 1,1 mm
 Light fastness: ≥ 5
 Fire tests: EN 1021 Part 1/2 / BS 5852 Cigarette / BS 5852 Match /
 IMO MED MSC.307 / CAL TB 117:2013

Technical features : 

GALEA (CAT. B) - PELLE / LEATHER



C4I Bianco C4Q Beige C4T Tortora chiaro C4U Tortora C4P Zucca C4H Rosso scuro C4V Dattero



C4J Grigio chiaro C4R Grigio C4N Verde mimetico C4W Verde muschio C4S Marmotta C4K Castagna C4L Marrone scuro

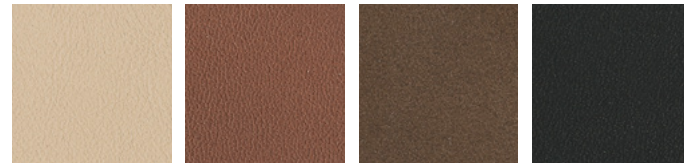


C4G Bluette C4M Blu C4F Nero

Raw hide: Bovino europeo \ European bovine
 Surface: Fiore corretto \ Corrected grain
 Thickness: 1,0 - 1,2 mm
 Light fastness: ≥ 5
 Fire tests: EN 1021 Part 1/2 / BS 5852 Cigarette / BS 5852 Match /
 IMO MED MSC.307 / CAL TB 117:2013

Technical features : 

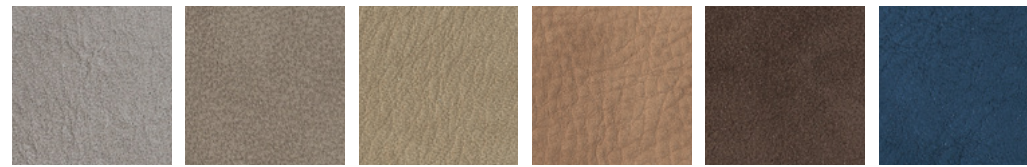
NINA (CAT. B) - PELLE / LEATHER



KK Naturale **XZ** Nocciola **KL** Marrone **KJ** Nero

Raw hide: Bovino europeo \ European bovine
Surface: Pieno fiore \ Full grain
Thickness: 0,9 - 1,0 mm

NABUK (CAT. C) - PELLE / LEATHER

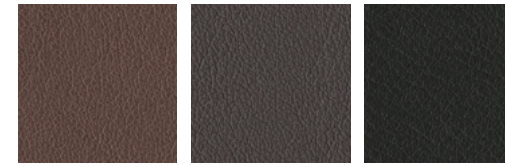


E2T Tortora **E2U** Marmotta **E2R** Avena **E2Q** Nocciola **E2S** Wengé **E2V** Blu

Raw hide: Bovino europeo \ European bovine
Surface: Nabuk idrorepellente \ Water-repellent Nabuk
Thickness: 1,1 - 1,3 mm
Light fastness: ≥ 3
Fire tests: EN 1021 Parr 1/2 / BS 5852 Cigarette / BS 5852 Match / IMO MED MSC.307 / CAL TB 117:2013

Technical features:

NATURE (CAT. C) - PELLE / LEATHER



C9Y Marrone **C9Z** Testa di moro **C9X** Antracite

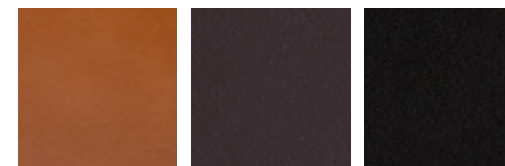
Raw hide: Bovino europeo \ European bovine
Surface: Anilina pieno fiore \ Aniline full grain
Thickness: 1,0 - 1,2 mm
Light fastness: ≥ 2/3
Fire tests: EN 1021 Parr 1/2 / BS 5852 Cigarette / BS 5852 Match / CAL TB 117:2013 / NFPA 260/UFAC

Technical features:

CUOINETTO / HIDE LEATHER



K1F Sabbia **K1B** Fango **K1C** Terracotta **BL** Burgan **1S** Grigio



IZ Cognac **K1D** Marrone scuro **BM** Nero

Raw hide: Bovino europeo \ European bovine
Surface: Fiore liscio \ Smooth grain
Thickness: 1,8 mm