

Maxi-Tables

of  **STILE**[®]

2021

MAXI
STILES®
introduce you
our new collection

Maxi Tables

The new Maxi-Tables collection is characterised by essential shapes and functionality, and enhances our offer with a great range of table bases for wide tops. Maxi tables are perfect for the contract world, as well as for office and the home sector. This collection includes 11 different square and round models, which can support oversize tops. You can completely customize your table, choosing between a wide range of finishes and materials, to perfectly fit all your needs.

Slim Line
800



Slim Line
800



Slim Line
800XL



***Slim Line
800XL***

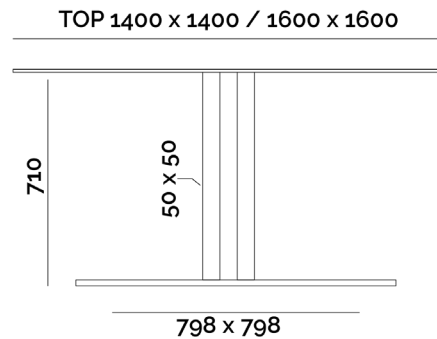


design by R&D DEPARTMENT

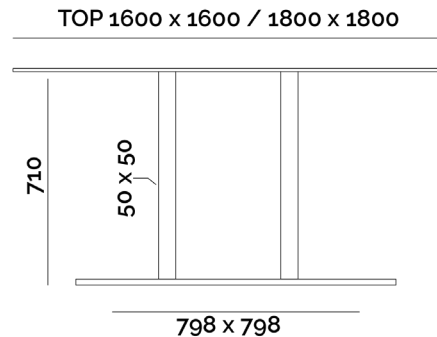
Slim Line

Base Slim 800 with square ballast and columns, has been designed to satisfy costumers' need to support wide tops. Its 4 central columns and the reinforced iron plate, give essentiality and style to this base. Model 800XL, with four aluminium "Star" crosses, allow to support oversize tops. Slim 800 and 800XL are available in standard height, as well lounge and bar sizes on request.

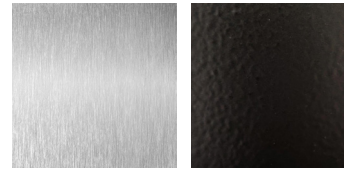
800



800XL



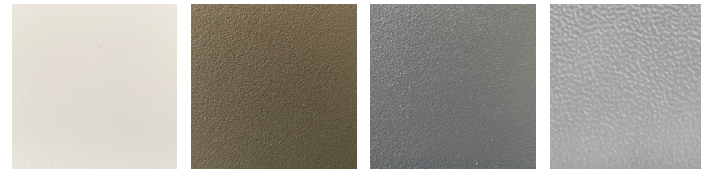
Standard finishes



1 3

01. Satin Inox, 03. Orange Peel Effect Black

Special finishes



5 6 7 8

05. Wrinkle White, 06. Wrinkle Cappuccino, 07. Wrinkle Grey, 08. Orange Peel Aluminum

Industrial paintings



9 10 11 12 13 14

09. Corten, 10. Rust, 11. Graphite Grey, 12. Coal Black, 13. Gunmetal, 14. Burnished Steel

Note

The industrial finishes are made with artisan procedures and there can be variations in color from production to production. Top measurements are indicative or recommended by PF STILE.

Petra Line
Petra double



Petra Line
Petra double

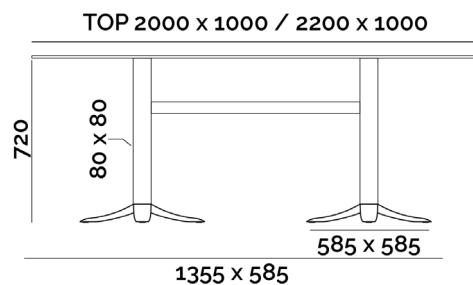


design by R&D DEPARTMENT

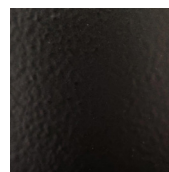
Petra Line

Petra, new PF STILE's creation, with a strong and bold design, is a timeless base that can perfectly fit every space of the contract world. The double version is available in standard height, as well lounge and bar sizes on request.

PETRA DOUBLE



Standard finishes



3

03. Orange Peel Effect Black

Special finishes



5

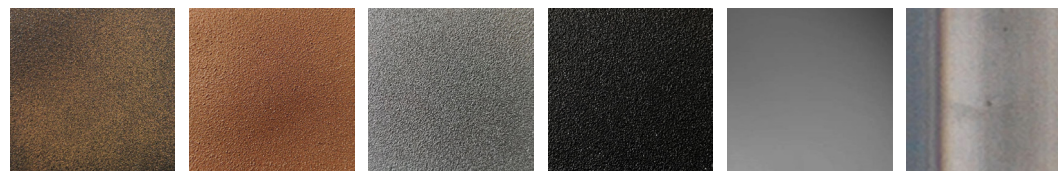
6

7

8

05. Wrinkle White, 06. Wrinkle Cappuccino, 07. Wrinkle Grey, 08. Orange Peel Aluminum

Industrial paintings



9

10

11

12

13

14

09. Corten, 10. Rust, 11. Graphite Grey, 12. Coal Black, 13. Gunmetal, 14. Burnished Steel

Note

The industrial finishes are made with artisan procedures and there can be variations in color from production to production. Top measurements are indicative or recommended by PF STILE.

***Zero Line
048F double***



***Zero Line
060F double***



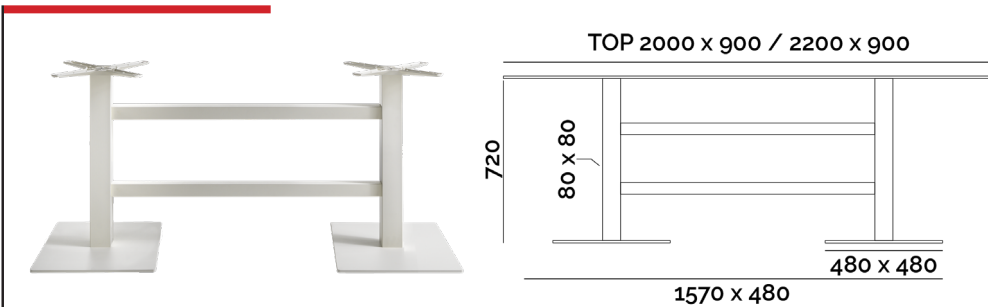
Zero Line
081F



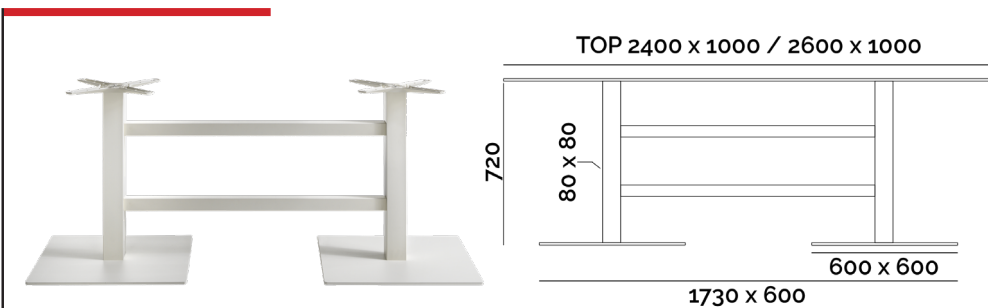
Zero Line

Zero Line is entirely made of steel, and has been designed to satisfy various needs. Base 048F and 060F Double have both the square ballast and the double crossbeam, model 081 has a round base instead, and it is characterized by its 3 central columns, also round. They are available in standard height, as well lounge and bar sizes on request.

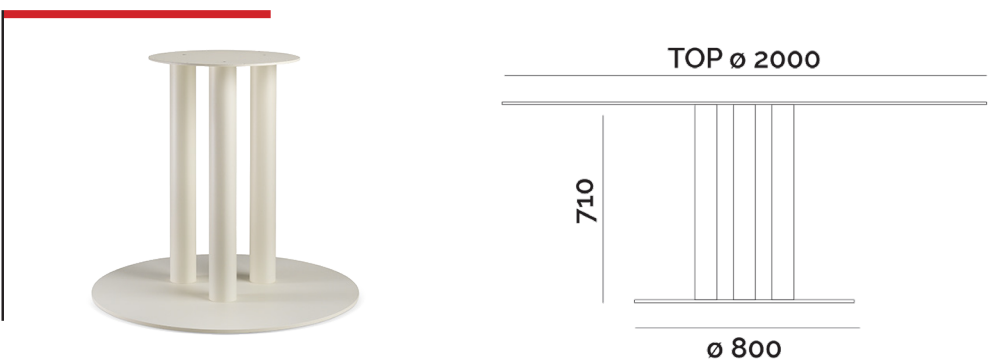
048F DOUBLE



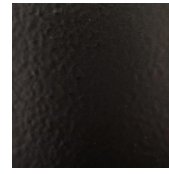
060F DOUBLE



081F



Standard finishes



3

03. Orange Peel Effect Black

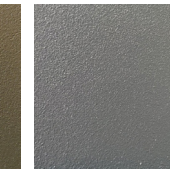
Special finishes



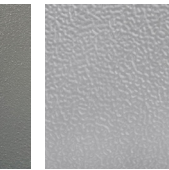
5



6



7



8

05. Wrinkle White, 06. Wrinkle Cappuccino, 07. Wrinkle Grey, 08. Orange Peel Aluminum

Industrial paintings



9



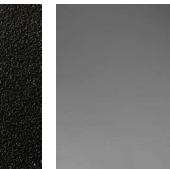
10



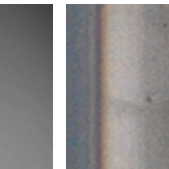
11



12



13



14

09. Corten, 10. Rust, 11. Graphite Grey, 12. Coal Black, 13. Gunmetal, 14. Burnished Steel

Note

The industrial finishes are made with artisan procedures and there can be variations in color from production to production. Top measurements are indicative or recommended by PF STILE.

Q Ghisa Line
110BQ double



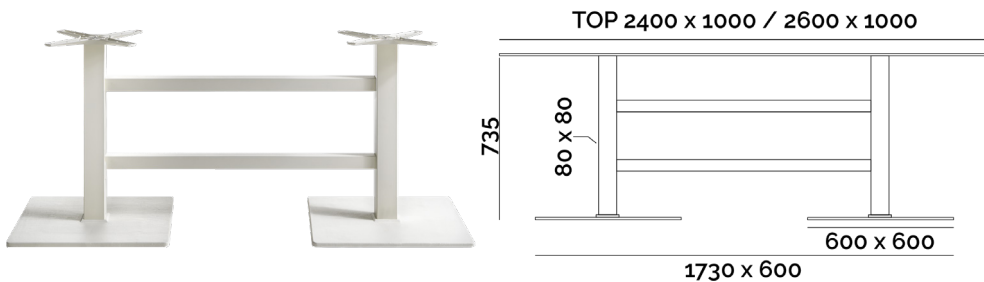
Q Ghisa Line
105QS double



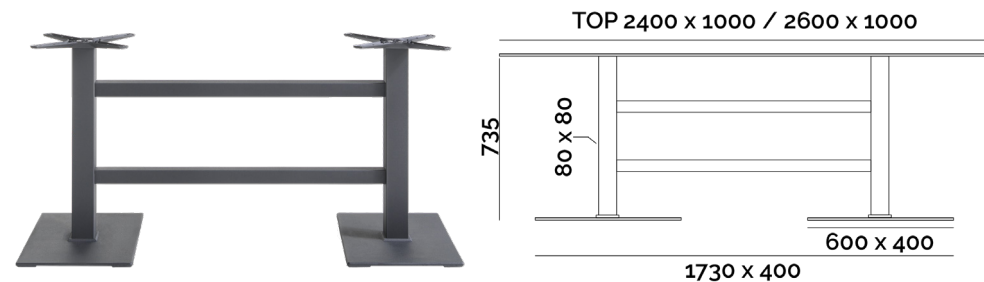
Q Ghisa Line

Q line in cast iron, with its strong and squared shapes, is easily recognisable as a PF Stile's creation, by the square step between the ballast and the column. 110BQ and 105QS double, which belong to this line, are perfect for oversize tops. With the double crossbeam, these bases are extremely stable and aesthetically intriguing, and have been designed to satisfy the new needs of the contract world. 110BQ and 105QS double are available in standard height, as well lounge and bar sizes on request.

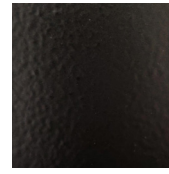
110BQ DOUBLE



105QS DOUBLE



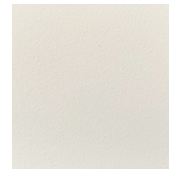
Standard finishes



3

03. Orange Peel Effect Black

Special finishes



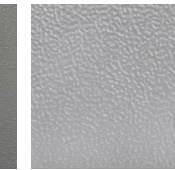
5



6



7



8

05. Wrinkle White, 06. Wrinkle Cappuccino, 07. Wrinkle Grey, 08. Orange Peel Aluminum

Industrial paintings



9



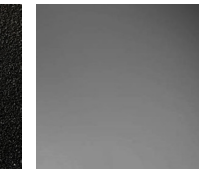
10



11



12



13



14

09. Corten, 10. Rust, 11. Graphite Grey, 12. Coal Black, 13. Gunmetal, 14. Burnished Steel

Note

The industrial finishes are made with artisan procedures and there can be variations in color from production to production. Top measurements are indicative or recommended by PF STILE.

Vulcano Line
2003 double

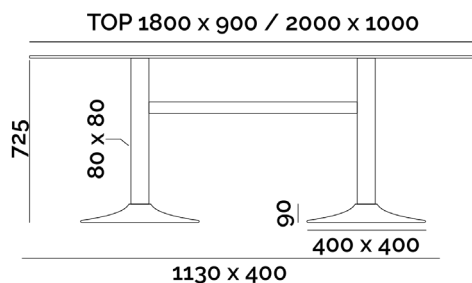


design by R&D DEPARTMENT

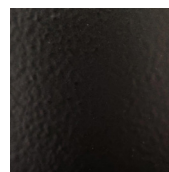
Vulcano Line

Vulcano line is PF Stile's main flagship, original and sophisticated, perfect for every environment. Base 2003 Double, composed of cast iron ballast and steel columns, is available in standard height, as well lounge and bar sizes on request.

2003 DOUBLE



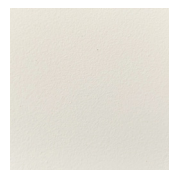
Standard finishes



3

03. Orange Peel Effect Black

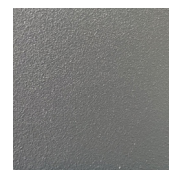
Special finishes



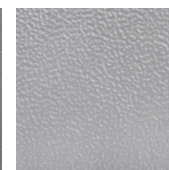
5



6



7



8

05. Wrinkle White, 06. Wrinkle Cappuccino, 07. Wrinkle Grey, 08. Orange Peel Aluminum

Industrial paintings



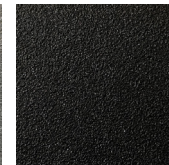
9



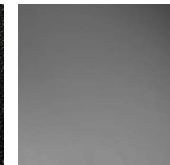
10



11



12



13



14

09. Corten, 10. Rust, 11. Graphite Grey, 12. Coal Black, 13. Gunmetal, 14. Burnished Steel

Note

The industrial finishes are made with artisan procedures and there can be variations in color from production to production. Top measurements are indicative or recommended by PF STILE.

***Giza Line
103 double***



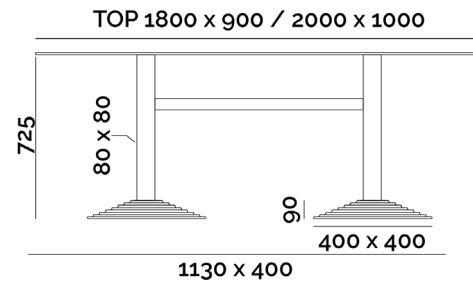
***Giza Line
603 double***



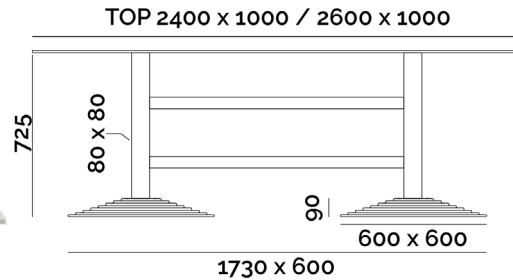
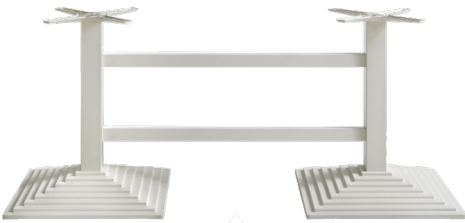
Giza Line

103 and 603 double are the new arrivals in the GIZA line, characterised by the stair-like ballasts and the square columns. The double crossbeam gives an incredible stability and a unique touch to these bases. They are available in standard height, as well lounge and bar sizes on request.

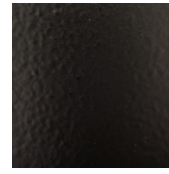
103 DOUBLE



603 DOUBLE



Standard finishes



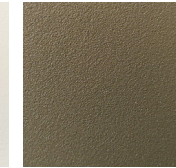
3

03. Orange Peel Effect Black

Special finishes



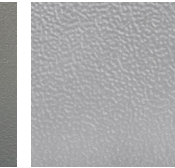
5



6



7



8

05. Wrinkle White, 06. Wrinkle Cappuccino, 07. Wrinkle Grey, 08. Orange Peel Aluminum

Industrial paintings



9



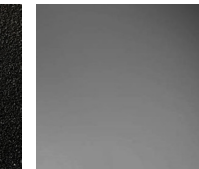
10



11



12



13



14

09. Corten, 10. Rust, 11. Graphite Grey, 12. Coal Black, 13. Gunmetal, 14. Burnished Steel

Note

The industrial finishes are made with artisan procedures and there can be variations in color from production to production. Top measurements are indicative or recommended by PF STILE.

Contacts

Via Lago Maggiore, 25

36077 Altavilla Vic.na

Tel. 0444 340669

Mail. info@pfstile.it

Website

pfstile.it

Pinterest

pinterest.it/pfstile

Facebook

facebook.com/PFSTILE

Instagram

instagram.com/pfstile_