

AGGIORNAMENTO / UPDATE - 04.2021

corbetta

CORBETTA SALVATORE SRL

Viale Lombardia 18, 23847 Molteno (LC) - ITALY

T. +39 031850575 - info@corbettasalvatore.com

www.corbettasalvatore.com

FINITURA ACCIAIO.
STEEL FINISHES.

FINITURE / COLORI ACCIAIO FINISHING / COLOURS STEEL

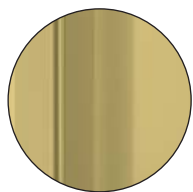
Tutti i colori dei materiali e delle finiture illustrate hanno solo valore indicativo in quanto soggetti alle tolleranze dei processi di stampa. Colors of materials and finishes are indicative as they are depend on printing process.

ACCIAIO. FINITURE GALVANICHE / STEEL. GALVANIC FINISHES

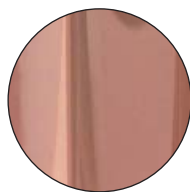
Uso interno / Indoor



01.
Cromo
Chrome plated



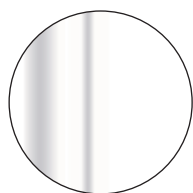
07.
Ottonato
Brass



12.
Rame lucido
Bright Copper

ACCIAIO. VERNICIATURE A POLVERE / STEEL. POWDER PAINTINGS

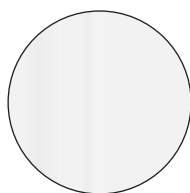
Uso interno - esterno¹⁺ / Indoor - Outdoor*



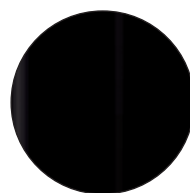
02. RAL 9003
Bianco
White



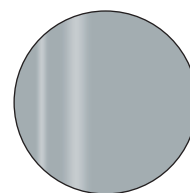
03. RAL 9005
Nero
Black



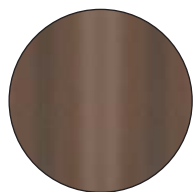
2D. RAL 9010
Bianco opaco
White matt



3D. RAL 9005
Nero opaco
Black matt



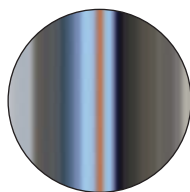
09. RAL 9006
Alluminio
Aluminium



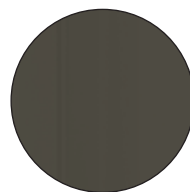
23.
Corten
Corten



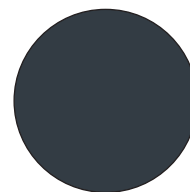
28.
Grafite
Graphite



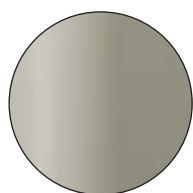
33.
Trasparente (Grezzo)
Transparent (Raw)



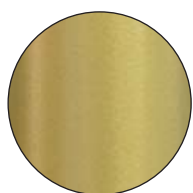
45. RAL 7022
Grigio umbro
Grey umbro



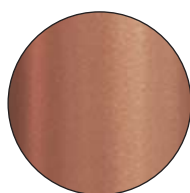
9D. RAL 7016
Grigio scuro opaco
Dark gray matt



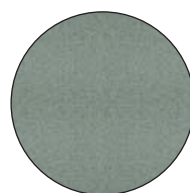
53.
Champagne
Champagne



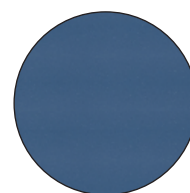
27. RAL
Oro verniciato
Painted Gold



18. RAL
Rame verniciato
Painted copper



06.
Verde Salvia
Green



13.
Blu
Blue

ACCIAIO INOX / STAINLESS STEEL

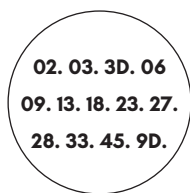
Uso esterno / Outdoor



XS.
Inox satinato
Inox satin



XL.
Inox lucido
Inox brilliant



XV.
Inox verniciato
Painted inox

ATTENZIONE! ATTENTION!

Uso interno / esterno*

Acciaio verniciato a polveri semilucida o opaca. Le vernici si intendono per esterno in quanto non subiscono variazioni di colore nel tempo a causa dei raggi UVA.

Indoor / Outdoor use*

Fine-textured powder coated steel with semilucid or matt look. The paints are for outdoor since they are not subject to colors UVA variations.

PIANI TAVOLO. TABLE TOPS.

155 - MELAMINICO / MELAMINE

156 - LAMINATO / LAMINATE

158 - LAMINATO HPL / HPL LAMINATE

159 - LAMINATO PIASTRELLE / TILES LAMINATE

160 - ROVERE 7 NODI / 7 KNOTS OAK

161 - DOGHE LEGNO / STRIPS OF WOOD

162 - LEGNO RICICLATO / RECYCLED WOOD

163 - LAMINATO "VASO" / "VASO" LAMINATE

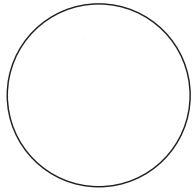
163 - VETRO / GLASS

MELAMINICO / MELAMINE

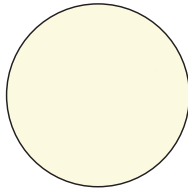
20. 25. mm

Tutti i colori dei materiali e delle finiture illustrate hanno solo valore indicativo in quanto soggetti alle tolleranze dei processi di stampa. Colors of materials and finishes are indicative as they are depending on the tolerances of the printing process.

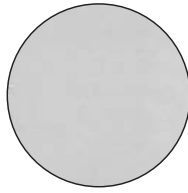
COLORI. COLORS. COULEURS.



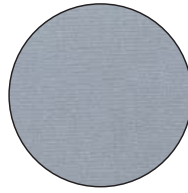
Bianco
White



Magnolia
Beige



Grigio chiaro
Light grey

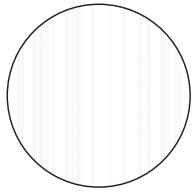


Alluminio
Aluminium



Nero
Black

LEGNI. WOOD. BOIS.



Bianco larix
Larix white



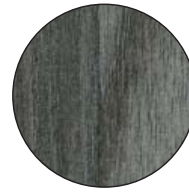
Rovere sbiancato
Whitened oak
1014



Rovere naturale
Natural oak
1001



Rovere grigio medio
Gray oak medium
7006



Olmo grigio scuro
Dark grey elm
7022



Olmo tinto
Painted elm
8028



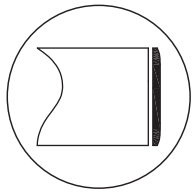
Wengè
Wengè



Vintage 6300
Vintage 6300



Cemento 7036
Concrete 7036

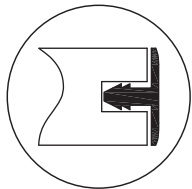


ABS

Bordo. Edge. Bord

Spessore / Thickness / Epaisseur

20. 25. mm



PVC NERO. BLACK. NOIR.

Bordo. Edge. Bord

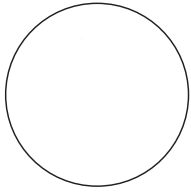
Spessore / Thickness / Epaisseur

25. mm

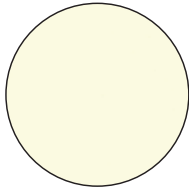
LAMINATO / LAMINATE

20. 24. 30. 50. mm

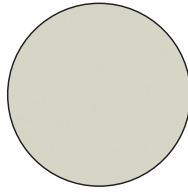
STANDARD



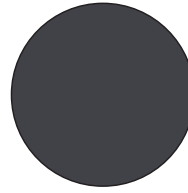
0020 ARPA
White



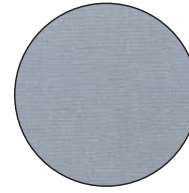
0204 ARPA
Beige



0527 ARPA
Light grey



879 ABET
Medium grey



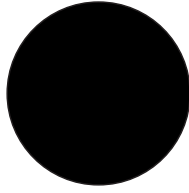
Alluminio
Silver
Aluminium



Rovere sbiancato
Whitened oak
Chêne blanc

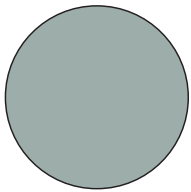


Wengè
Wengè
Wengè

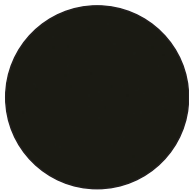


0509 ARPA
Black

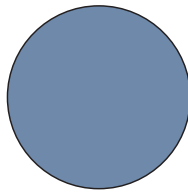
SINTESI FOR YOU - COLORI. COLORS. COULEURS.



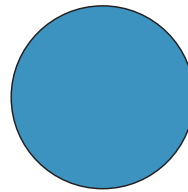
0210 ARPA
Ice grey



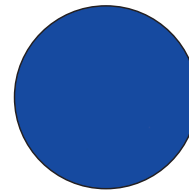
0526 ARPA
Dull grey



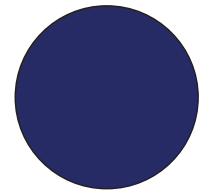
0675 ARPA
Sky blue



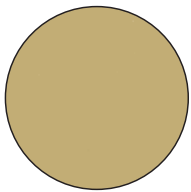
0569 ARPA
Bright blue



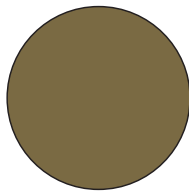
0566 ARPA
Ocean blue



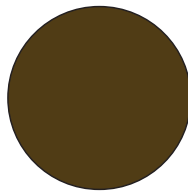
0593 ARPA
Blue navy



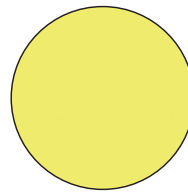
0536 ARPA
Light sand



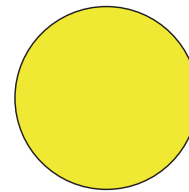
0576 ARPA
Dark sand



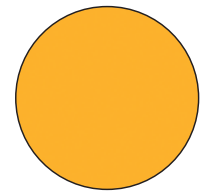
0559 ARPA
Chocolate



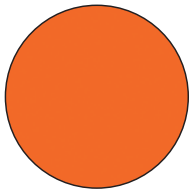
0573 ARPA
Light yellow



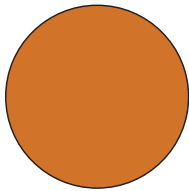
0670 ARPA
Bright yellow



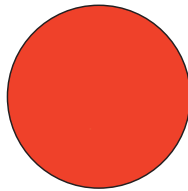
0564 ARPA
Egg yellow



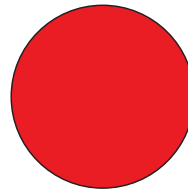
0682 ARPA
Bright orange



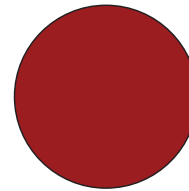
0543 ARPA
Ocher



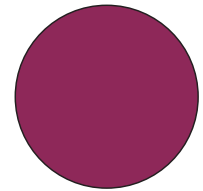
0500 ARPA
Bright red



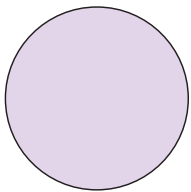
0561 ARPA
Dark red



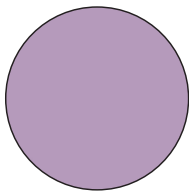
0571 ARPA
Bordeaux



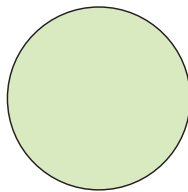
0594 ARPA
Prune



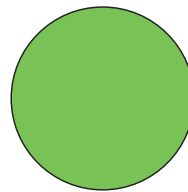
0606 ARPA
Light purple



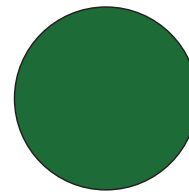
0605 ARPA
Dark purple



0517 ARPA
Light green

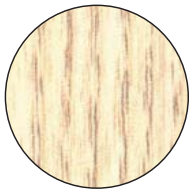


0660 ARPA
Apple green

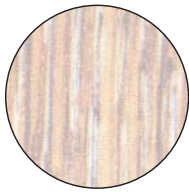


0549 ARPA
Grass green

WOODS FOR YOU - LEGNI. WOOD. BOIS.



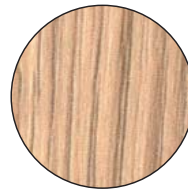
4521 ARPA



4071 ARPA



4420 ARPA



4520 ARPA



4519 ARPA



4516 ARPA



1877 ARPA



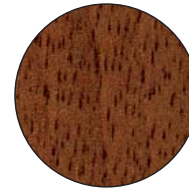
4518 ARPA



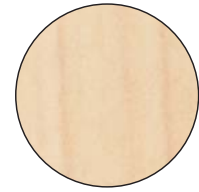
4303 ARPA



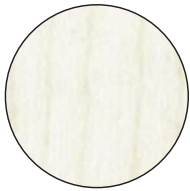
1372 ARPA



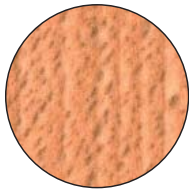
1886 ARPA



4327 ARPA



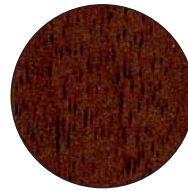
1955 ARPA



1852 ARPA



1286 ARPA



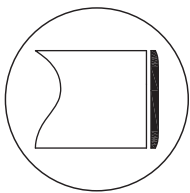
1890 ARPA



Cemento 7036
Concrete 7036



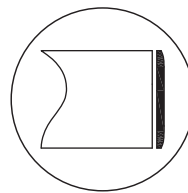
107 Polyrey
Terrazzo



ABS
Bordo. Edge. Bord

Spessore / Thickness / Epaisseur

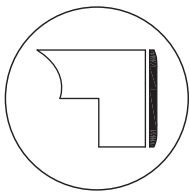
20. 24. 30. mm



ABS OTTONATO SATINATO
SATIN BRASS / LAITON SATINÉ
Bordo. Edge. Bord

Spessore / Thickness / Epaisseur

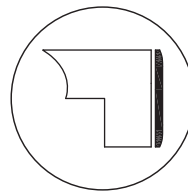
20. 24. 30. mm



ABS
Bordo. Edge. Bord

Spessore / Thickness / Epaisseur

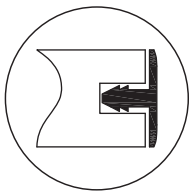
50. mm



ABS OTTONATO SATINATO
SATIN BRASS / LAITON SATINÉ
Bordo. Edge. Bord

Spessore / Thickness / Epaisseur

50. mm



PVC NERO. BLACK. NOIR.
Bordo. Edge. Bord

Spessore / Thickness / Epaisseur

24. mm

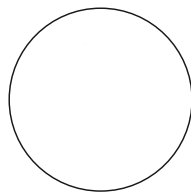
LAMINATO HPL / HPL LAMINATE

10. mm

Tutti i colori dei materiali e delle finiture illustrate hanno solo valore indicativo in quanto soggetti alle tolleranze dei processi di stampa. Colors of materials and finishes are indicative as they depend on the tolerances of the printing process.

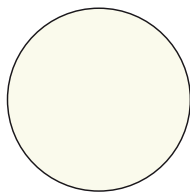
A - STANDARD

USE: INDOOR / OUTDOOR



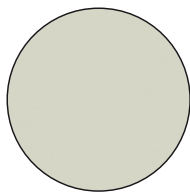
0001 ARPA
Bianco
White

12 MM
Cuore nero
Black heart



0244 ARPA
Avorio
Ivory

12 MM
Cuore nero
Black heart



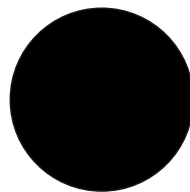
0527 ARPA
Grigio chiaro
Light grey

12 MM
Cuore nero
Black heart



0526 ARPA
Grigio scuro
Dark grey

12 MM
Cuore nero
Black heart



0509 ARPA
Nero
Black

12 MM
Cuore nero
Black heart

B - PIETRA & LEGNO. STONE & WOOD.



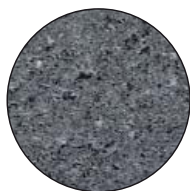
3276 ARPA
Fiammato rosso
Fire flame

12 MM
Cuore marrone
Brown heart



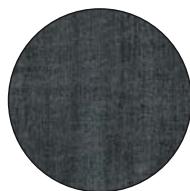
3349 ARPA
Fiammato nero
Black flame

12 MM
Cuore nero
Black heart



3340 ARPA
Basalto
Basalt

12 MM
Cuore nero
Black heart



3394 ARPA
Hipster carbon

12 MM
Cuore marrone
Brown heart



4587 ARPA
Rovere Slavonia
Slavonia oak

12 MM
Cuore marrone
Brown heart



4517 ARPA
Rovere carbone
Carbon oak

10 MM
Cuore marrone
Brown heart



4586 ARPA
Rovere Texas
Texas oak

12 MM
Cuore marrone
Brown heart



3192 ARPA
Cemento
Concrete

12 MM
Cuore nero
Black heart

C - MARMO. MARBLE.



6076
Impero

12 MM
Cuore nero
Black heart



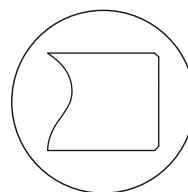
6075
Palladio

12 MM
Cuore in tinta
Same color heart



5547
Statuario

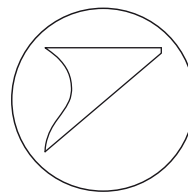
12 MM
Cuore in tinta
Same color heart



DRITTO. STRAIGHT
Bordo. Edge. Bord

Spessore / Thickness / Epaisseur

10/12. mm



SVASATO. INCLINED.
Bordo. Edge. Bord

Spessore / Thickness / Epaisseur

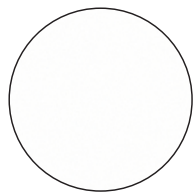
10/12. mm

LAMINATO PIASTRELLE / TILES LAMINATE

40. mm

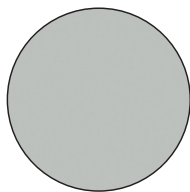
Tutti i colori dei materiali e delle finiture illustrate hanno solo valore indicativo in quanto soggetti alle tolleranze dei processi di stampa. Colors of materials and finishes are indicative as they depend on the tolerances of the printing process.

LUCIDO / POLISHED / POLI



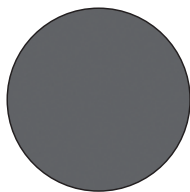
FORMICA AR PLUS
F0949

Bianco
White



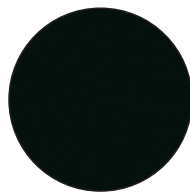
FORMICA AR PLUS
F7927

Grigio chiaro
Light grey



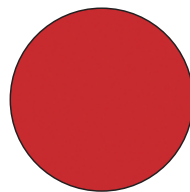
FORMICA AR PLUS
F07912

Antracite
Dark grey



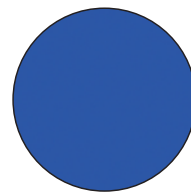
FORMICA AR PLUS
F2253

Nero
Black



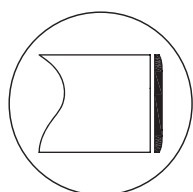
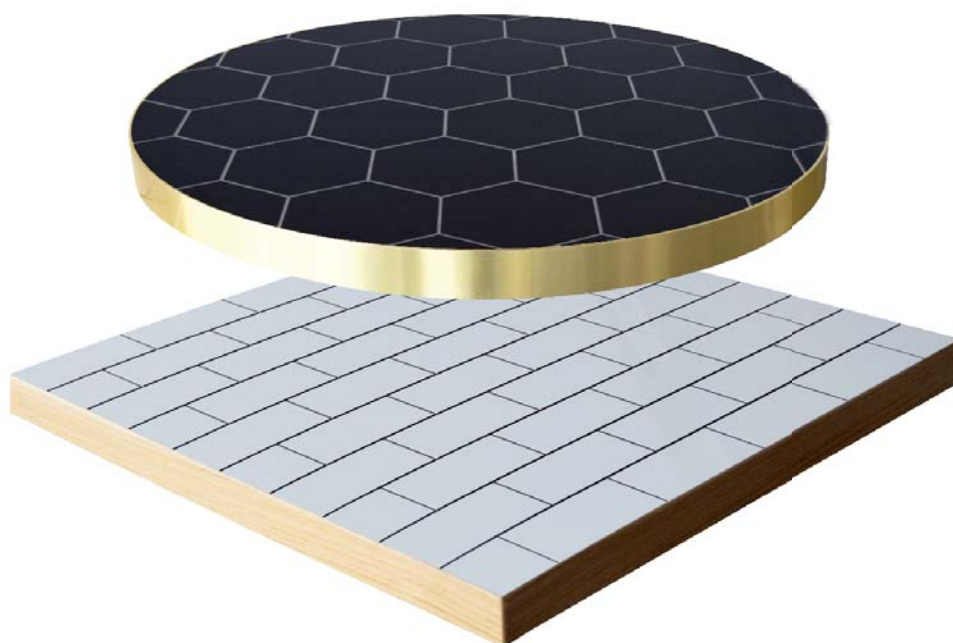
FORMICA AR PLUS
F1238

Rosso
Red



FORMICA AR PLUS
F7851

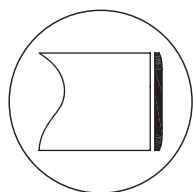
Blu
Blue



LEGNO MASSELLO PIATTO
SOLID WOOD / BOIS PLAT
Bordo. Edge. Bord

Spessore / Thickness / Epaisseur

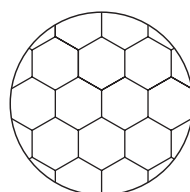
40. mm



ABS OTTONATO SATINATO
SATIN BRASS / LAITON SATINÉ
Bordo. Edge. Bord

Spessore / Thickness / Epaisseur

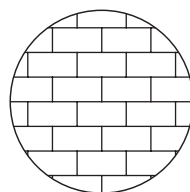
40. mm



Piastrelle / Tiles / Tuiles

Esagonali
Hexagon
Hexagone

Square / Round tops



Piastrelle / Tiles / Tuiles

Rettangolari
Rectangular
Rectangulaire

Square tops

ROVERE 7 NODI / 7 KNOTS OAK

40. mm

Tutti i colori dei materiali e delle finiture illustrate hanno solo valore indicativo in quanto soggetti alle tolleranze dei processi di stampa.
Colors of materials and finishes are indicative as they depend on the tolerances of the printing process.



Tinto naturale
Natural painted



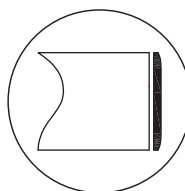
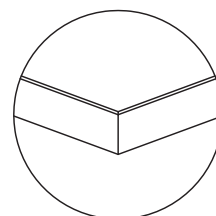
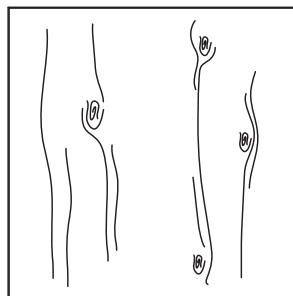
Tinto grigio
Grey painted



Tinto noce
Walnut painted

Piano listellato rovere tinto.
Bordo piatto legno massello.

Painted oak top with knots.
Plat solid wood edge.



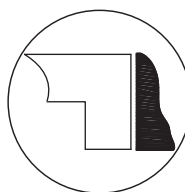
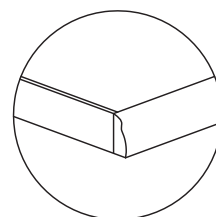
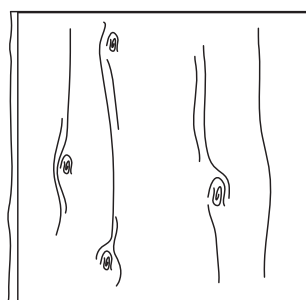
LEGNO MASSELLO PIATTO
SOLID WOOD / BOIS PLAT
Bordo. Edge. Bord

Spessore / Thickness / Epaisseur

40. mm

Piano listellato rovere tinto.
2 Lati corti: Bordo piatto legno massello
2 Lati lunghi: Bordo corteccia irregolare

Painted oak top with knots.
- 2 Short sides: Plat solid wood edge
- 2 Long sides: Irregular bark edge



CORTECCIA IRREGOLARE
IRREGULAR BARK / ECORCE IRREGULIERE
Bordo. Edge. Bord

Spessore / Thickness / Epaisseur

40. mm

DOGHE LEGNO / STRIPS OF WOOD

40. mm

Tutti i colori dei materiali e delle finiture illustrate hanno solo valore indicativo in quanto soggetti alle tolleranze dei processi di stampa. Colors of materials and finishes are indicative as they depend on the tolerances of the printing process.

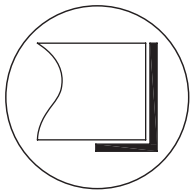
USE: INDOOR / OUTDOOR



Tinto grigio
Grey painted
Teint gris



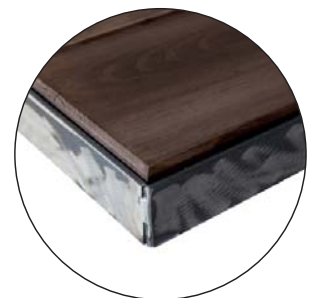
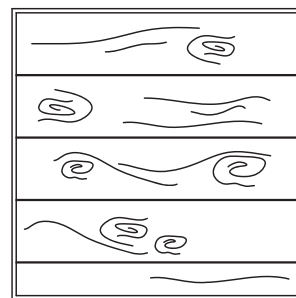
Tinto noce
Walnut painted
Teint noyer



FERRO TINTO GREZZO
STEEL PAINTED RAW / FER TEINT RAW
Bordo. Edge. Bord

Spessore / Thickness / Epaisseur

40. mm



EUCALYPTUS

18. mm

Tutti i colori dei materiali e delle finiture illustrate hanno solo valore indicativo in quanto soggetti alle tolleranze dei processi di stampa. Colors of materials and finishes are indicative as they depend on the tolerances of the printing process.

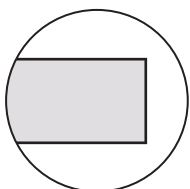
USE: INDOOR / OUTDOOR



Tinto naturale
Natural painted



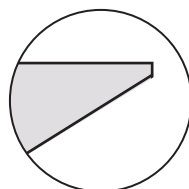
Tinto nero
Black painted



EUCALYPTUS
Dritto / Straight
Bordo. Edge. Bord

Spessore / Thickness / Epaisseur

18. mm



EUCALYPTUS
Svasato / Inclined
Bordo. Edge. Bord

Spessore / Thickness / Epaisseur

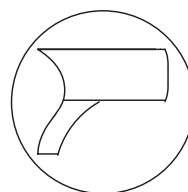
18. mm

PIANI LEGNO RICICLATI / RECYCLED WOOD TOPS

35/40. mm



Tutti i colori dei materiali e delle finiture illustrate hanno solo valore indicativo in quanto soggetti alle tolleranze dei processi di stampa. Colors of materials and finishes are indicative as they depend on the tolerances of the printing process.

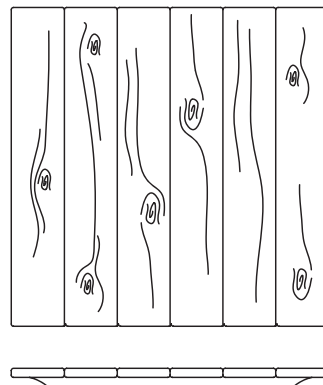


LEGNO / WOOD

Bordo. Edge. Bord

Spessore / Thickness / Epaisseur

40. mm



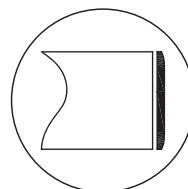
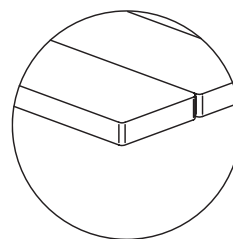
TIPO / TYPE: A



ATTENZIONE! ATTENTION!!

Colore, larghezza ed estetica delle doghe varieranno nel tempo e saranno legate ai materiali di riciclo disponibili. NON sarà possibile garantire uno standard di omogeneità, scelte di forma e tonalità di colore.

Color, width and aesthetics of the slats will vary over time and will be linked to the recycled materials available. It will NOT be possible to guarantee a standard of homogeneity, shape choices and color shades.



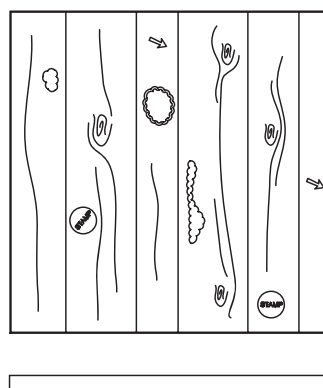
LEGNO MASSELLO PIATTO

SOLID WOOD / BOIS PLAT

Bordo. Edge. Bord

Spessore / Thickness / Epaisseur

35. mm



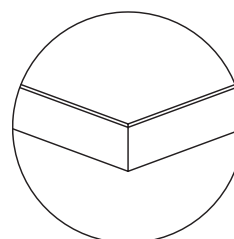
TIPO / TYPE: B



ATTENZIONE! ATTENTION!!

Colore, larghezza ed estetica delle doghe varieranno nel tempo e saranno legate ai materiali di riciclo disponibili. NON sarà possibile garantire uno standard di omogeneità, scelte di forma e tonalità di colore.

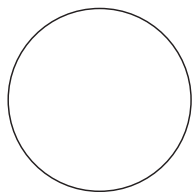
Color, width and aesthetics of the slats will vary over time and will be linked to the recycled materials available. It will NOT be possible to guarantee a standard of homogeneity, shape choices and color shades.



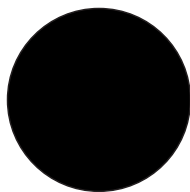
LAMINATO "VASO" / "VASO" LAMINATE

30. mm

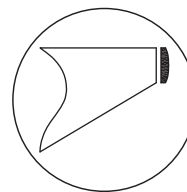
Tutti i colori dei materiali e delle finiture illustrate hanno solo valore indicativo in quanto soggetti alle tolleranze dei processi di stampa. Colors of materials and finishes are indicative as they depend on the tolerances of the printing process.



Bianco
White



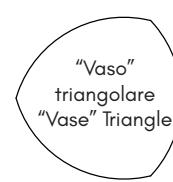
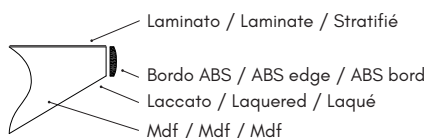
Nero
Black



ABS
Bordo. Edge. Bord

Spessore / Thickness / Epaisseur

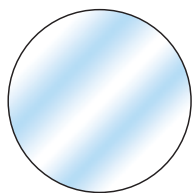
30. mm



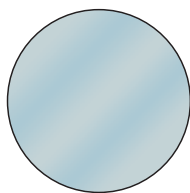
VETRO / GLASS

10. 12. mm - Temprato. Tempered

Tutti i colori dei materiali e delle finiture illustrate hanno solo valore indicativo in quanto soggetti alle tolleranze dei processi di stampa. Colors of materials and finishes are indicative as they depend on the tolerances of the printing process.



Trasparente
Transparent
Transparent



Satinato
Satin
Satin