

THE ART OF CONTRACT

MATERIALS BOOK UPDATED

Montbel
made in Italy

La passione creativa e la ricerca di uno stile unico e riconoscibile hanno dato corpo alla collezione tessile e di finiture Montbel.

Passion for creativity and the quest for a unique, recognizable style have brought about Montbel's collection of textiles and finishes.

I nostri prodotti, ricchi di arte
del sapere, diventano vera esperienza
e trasformano ruvidi oggetti
in sculture vellutate.

Rich in the art of knowing things,
our products become
an authentic experience,
transforming coarse objects
into velvety sculptures.



Forme e superfici si vestono di colori e sensazioni tattili differenti. La collezione tessile Montbel è il risultato di una selezione di materiali di qualità, e di pregio, sempre al passo con le tendenze. Tutti i nostri tessuti, pelli ed ecopelli rispettano le più severe normative tecniche in ambito Contract.

Forms and surfaces don multifarious colours and, likewise, arouse several tactile sensations. Montbel's textile collection is the outcome of its selecting materials that are qualitative, precious, and always in step with trends. All our fabrics, leather and eco-leather conform to the severest technical norms in the Contract context.



Il legno.
Testimone della nostra arte.
Wood. Witnessing our art.

Dietro di noi, l'unicità. Un processo magico di trasformazione del legno in prodotto. Del prodotto in collezioni. Le nostre sedute si colorano con aniline, laccature e finiture differenti interpretando lo spazio con uno stile ogni volta diverso e personale.

Behind us, uniqueness. A magical transformation process of wood into product. Of our product into collections. Our seating gets coloured with various anilines, lacquers, finishes as well - interpreting space with a style which is ever-different and personal.



Star-system.

Montbel is Media Partner of Movie Stars Lounge at Venice's International Cinematographic Art Exhibition and Cannes Film Festival.



Come attori i nostri prodotti sono protagonisti di un palcoscenico sempre diverso, interpretando storie con ispirazioni diverse ma un linguaggio comune e distintivo. La passerella o tappeto rosso su cui transita il nostro prodotto amplifica la percezione di un racconto esclusivo che veicola la riconoscibilità internazionale del nostro Brand. Montbel è Media Partner ai Movie Stars lounge della Mostra Internazionale d'arte cinematografica di Venezia, creando un sottile legame tra volti ricchi di personalità e design.

In their capacity as actors, our products are the protagonists of a stage that is unfailingly different, interpreting stories that are variously inspired but share a common, distinctive language. The catwalk or red carpet our product passes along amplifies perceptions of an exclusive tale, conveying our brand's international recognizability. Montbel is Media Partner at the Movie Stars' lounge of Venice's International Cinematographic Art Show, thus creating a bond between faces rich in personality and design.



finishes index

- 012 **finiture standard** . standard finishes
- 013 **finiture laccate** . lacquered finishes
- 014 **laminati** . laminates
- 015 **finiture metalli basi tavoli** . metal finishes table bases
- 015 **finiture metalli sedute** . metal finishes seatings
- 016 **poggiapiedi in metallo** . metal footrest
- 016 **puntali in metallo** . metal sabots
- 016 **scivoli standard** . standard glides
- 016 **scivolo speciale** . special glide

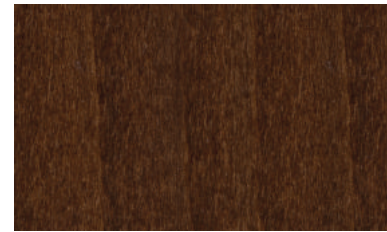
ST finiture standard . standard finishes



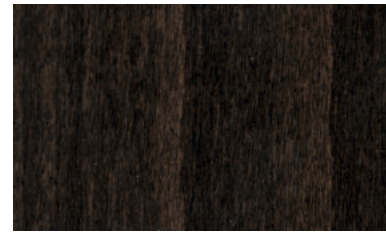
100 Faggio essenza / Beech timber



102 Faggio noce scuro / Beech dark walnut



103 Faggio noce / Beech walnut



104 Faggio wengè / Beech wengè



105 Faggio noce canaletto / Beech american walnut



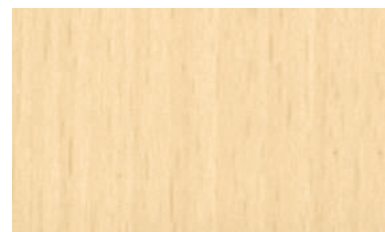
106 Faggio noce biondo / Beech light walnut



141 Faggio ciliegio scuro / Beech dark cherry



109 Rovere naturale / Natural Oak



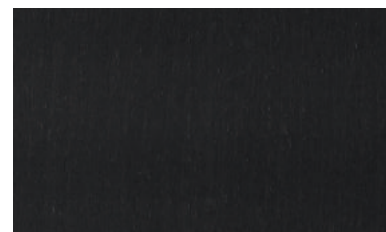
120 Bianco anilinato / White aniline



123 Anilina deserto / Desert aniline



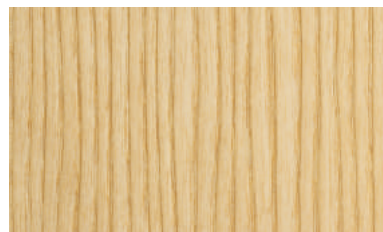
121 Grigio anilinato / Grey aniline



125 Anilina nero scuro / Dark black aniline

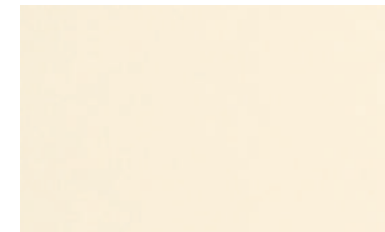


126 Anilina grigia chiara / Light grey aniline

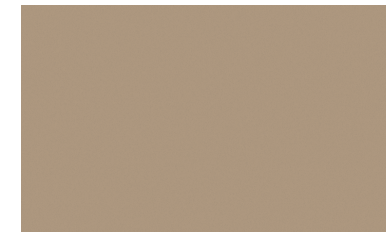


901 Frassino naturale / Natural ash
(Only for ash essence)

LA finiture laccate . lacquered finishes



1013 Bianco perla / Pearl white



1019 Grigio beige / Grey beige



1036 Oro perlato / Pearl Gold



1037 Giallo sole / Sunny yellow



2000 Arancio giallastro / Yellowish orange



2001 Arancio rossastro / Reddish orange



3016 Rosso corallo / Coral red



3003 Rosso / Red



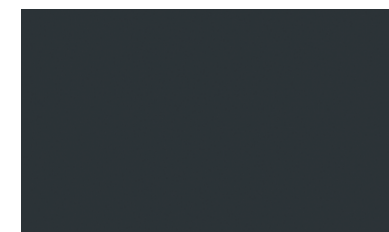
5018 Blu turchese / Turquoise blue



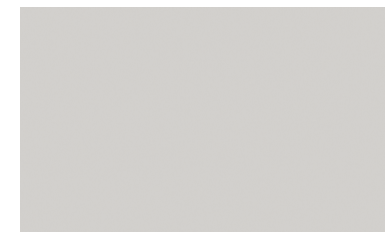
5019 Blu capri / Capri blue



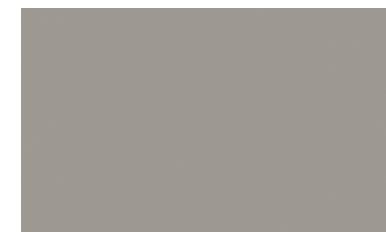
6002 Verde foglia / Green leaf



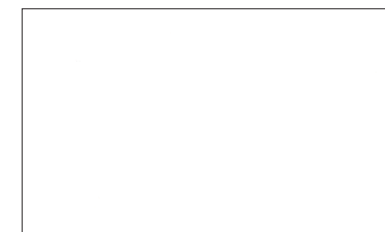
7016 Grigio antracite / Anthracite grey



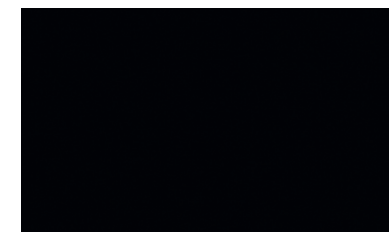
7047 Grigio chiaro / Light grey



7030 Grigio staingrau / Steingrau grey

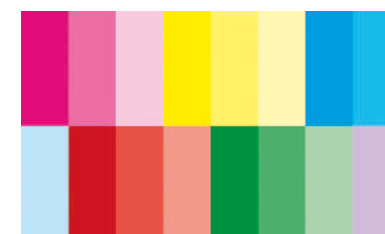


9003 Laccato bianco opaco / White matt lacquer



9005 laccato nero opaco / Black matt lacquer

**laccato RAL a scelta
custom RAL finishes**



Laccato RAL / RAL lacquered

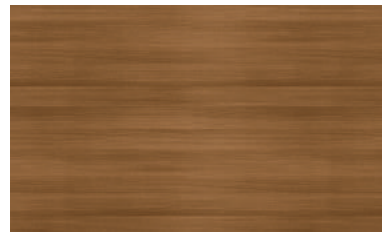
laminati standard . standard laminates



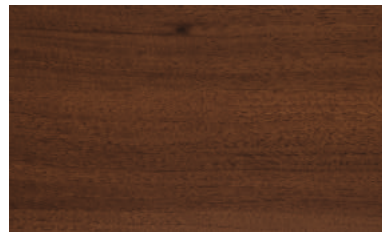
1930 Faggio essenza /
(100) Beech timber



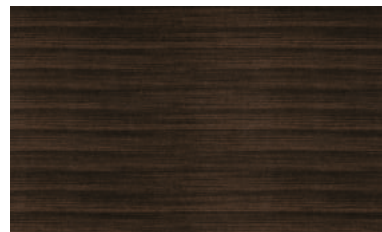
1661 Rovere naturale /
(109) Natural oak



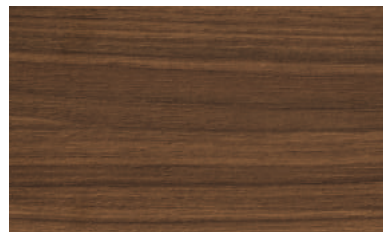
1329 Faggio noce biondo /
(106) Beech light walnut



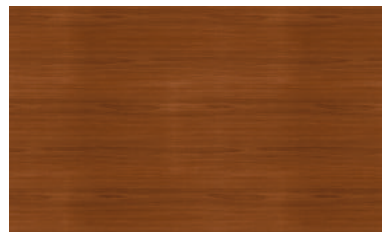
1890 Faggio noce /
(103) Beech walnut



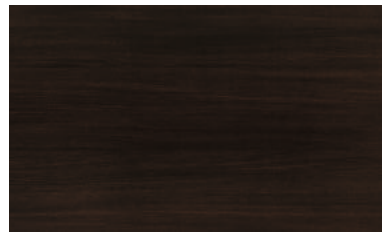
312 Faggio noce scuro /
(102) Beech dark walnut



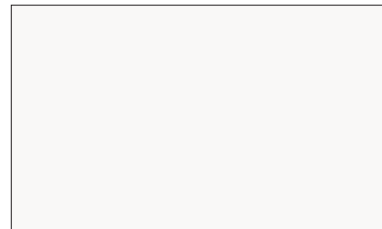
4303 Faggio noce canaletto /
(105) Beech american walnut



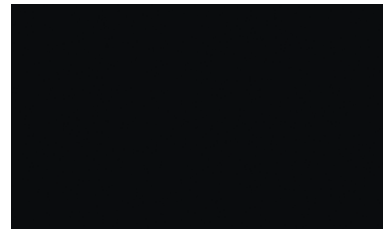
1328 Faggio ciliegio scuro /
(141) Beech dark cherry



007 Faggio wengè /
(104) Beech wengè



406 Laccato bianco opaco /
(001) White mat lacquer



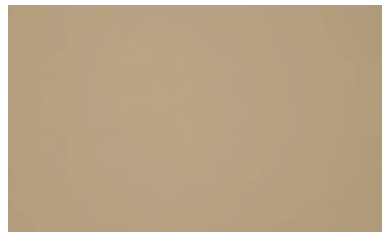
421 Anilina nero scuro /
(002) Dark black aniline



1955 Bianco anilinato /
(120) White aniline

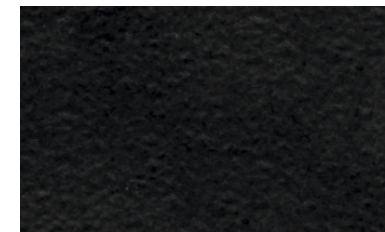


658 Grigio anilinato /
(121) Grey aniline



534 Anilina deserto /
(123) Desert aniline

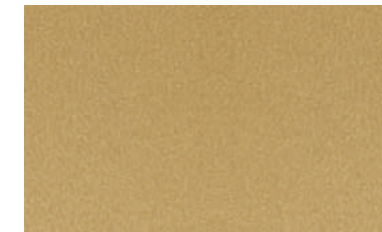
finiture metalli basi tavoli . metal finishes table bases



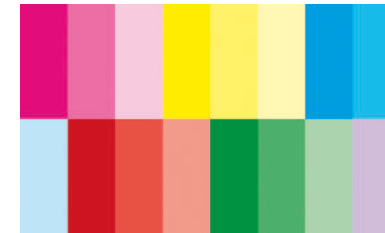
NG0 Nero gofrato / Black hammered



ISO Inox satinato / Brushed stainless steel

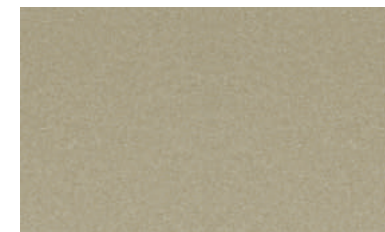


MGO RAL 1036 Oro perlato / Pearl gold

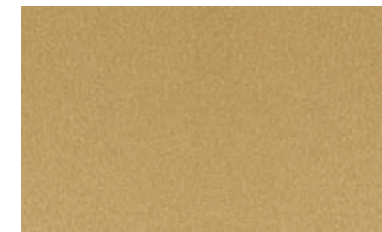


Laccato RAL / RAL Lacquered

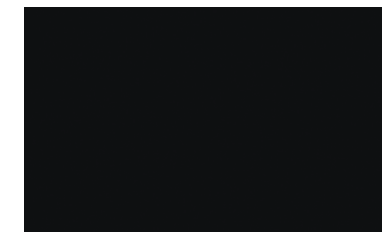
finiture metalli sedute . metal finishes seatings



MLG RAL 1035 Beige perlato / Pearl beige



MGO RAL 1036 Oro perlato / Pearl gold



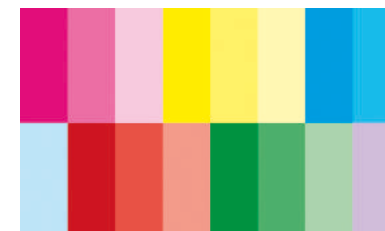
MBL Nero / Black



MGA RAL 7021 Grigio / Grey



MWH Bianco / White



Laccato RAL / RAL Lacquered

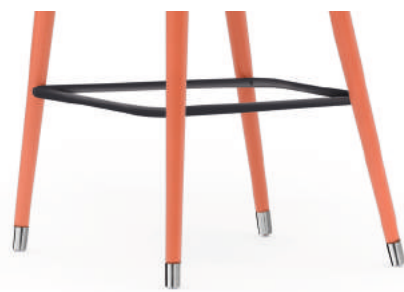
poggiapiedi in metallo . metal footrest



Poggiapiedi in metallo, finitura ottone satinato /
Metal footrest, brushed brass finish



Poggiapiedi in metallo, finitura inox lucido /
Metal footrest, polished inox finish



Poggiapiede in metallo, finitura nera /
Metal footrest, black finish

puntali in metallo . metal sabots

Solo Rose e Danielle / Rose and Danielle only



Puntale in metallo, finitura ottone satinato /
Metal sabot, brushed brass finish



Puntale in metallo, finitura inox lucido /
Metal sabot, polished inox finish

scivoli gambe legno . wooden legs glides

STANDARD / STANDARD

SU RICHIESTA / UPON REQUEST



A Nylon + gomma /
Nylon + rubber



B Teflon (ceramica, piastrelle,
marmo, pietra, moquette, legno) /
Teflon (ceramic, tiled floor, marble,
stone, carpet, wood)



C Feltro /
Felt



D Acciaio + gomma /
Steel + rubber

scivoli gambe metallo . metal legs glides

STANDARD / STANDARD

SU RICHIESTA / UPON REQUEST



E Plastica /
Plastic



F Feltro /
Felt



G Acciaio /
Steel

credits

AD . Daniele Lo Scalzo Moscheri

Photo . emozioni.com

Fotolito . lucegroup.it

Stampa . sincromia.it cod. 190373

Aggiornamento giugno 2023

international press office

Claim_Brand Industry

T. +39 0422 633865

sara.saltarelli@claim.it

Montbel Srl

Sales office

Via Braiduzza, 8

I-33048 San Giovanni al Natisone - Udine - Italy

T. +39 0432 743147 / 743233

F. +39 0432 743807

Head office

Via D. Scuole, 30

I-33044 Manzano - Udine - Italy

T. +39 0432 750784

F. +39 0432 740279

www.montbel.it - montbel@montbel.it

I colori chiari non devono essere messi a contatto con tessuti e capi di abbigliamento trattati con coloranti non fissati (ad esempio jeans o derivati) o con scarse solidità di tintura, onde evitare macchie e aloni di coloranti di cui non possiamo garantire la pulitura. Vi informiamo di non poterci ritenere responsabili di danni causati dall'uso improprio dei nostri spalmati.

To avoid permanent stains, light coloured products should not be brought into contact with textiles and clothing coloured with unfixed dyes. We cannot guarantee the ability to remove unknown dyes from light coloured products. Please note that we cannot be liable for damages caused by inappropriate use of our products.

La Montbel si riserva di applicare i tessuti utilizzando il verso più consono all'articolo prescelto.

Unless specified otherwise Montbel will use its discretion to determine the direction of fabric than best suits the model selected.

