

TEAK



T1 Natural Teak



T1S Brushed Teak

The teak used to make the Ethimo collections is of the highest quality and it is only sourced from controlled forest plantations in compliance with the strictest reforestation processes.

This close focus on the environment has enabled the company to obtain the prestigious FSC certification (Forest Stewardship Council). This is an international acknowledgement which testifies that the wood used in Ethimo products comes from a forest and a supply chain that are responsibly managed in line with a set of internationally accepted rules.

Teak is the protagonist of the *main collections* proposed by Ethimo and its use can be justified by its excellent properties in terms of durability, hardness, and aesthetic appeal. These three factors make it an ideal material for the production of high end outdoor furniture that is constantly exposed to temperature changes, water, humidity, and saltwater.

Once cut and matured, teak wood is honey-coloured. However, over time, the oxidation caused by the air, water and light will tend to make it lighter and greyer, giving it its typical “aged” look. In this case, the colour change is not a problem related to the quality of the wood, its duration or resistance, but simply a natural aesthetic variation.

Cleaning and maintenance

To keep the teak furniture in the best condition, it is recommended to wash it often with water to remove dirt and impurities from the surface. In the case of stains on the surface, it is advisable to clean the dry material with a soft sponge and cleanse with mild soap diluted in water.

In case you want to protect the surface of teak from natural wear, avoiding stains and dirt, it is possible to treat the material with a protective product that will darken it slightly, creating a protective film.

Ethimo provides the specific kit for cleaning and protection.

MATERIALS

Ethimo



T5 Pickled Teak

To give teak vintage charm, it is “pickled”, in other words, it is firstly brushed to give the surface a rougher older appearance, and remove the natural oily coating. It is then tinted. For the “grey” pickled finish, after being brushed, the teak is treated to give it a silvery-grey coating with an antique effect.

Cleaning and maintenance

The finish of pickled teak is also an effective protection for wood, which will therefore be less prone to staining. Over time, however, even pickled teak will tend to whiten due to exposure to light.

In this case it is possible to restore the original effect through the treatment with the appropriate recovery kit.

PAINTED MAHOGANY



M4 Langhe Green



M6 Lipari Grey



M2 Pantelleria Blue



M3 Ostuni White

As for painted wooden furniture, Ethimo chooses mahogany wood coming from regulated Indonesian plantations. Mahogany is a very durable hardwood, extremely suitable for outdoor use, also commonly used in boat building. After drying and before painting, the wood is treated with a sealant which closes the pores making it waterproof. The paints used are weather resistant and weatherproof, guaranteed by a special procedure for fixing the colour.

MATERIALS

Ethimo

Cleaning and maintenance

In the case of painted mahogany furniture, it is necessary to take care of the surfaces avoiding scratches and scrapes. For the cleaning of surfaces it is advisable to use only mild soap and

water, absolutely avoiding sponges, aggressive detergents and abrasive agents. To restore the peeling surfaces, the corresponding touch-up paint is available.

ACCOYA®



T1A Accoya

Accoya® is a highly durable new timber product obtained thanks to a non-toxic acetylation process, with qualities that make it ideal for outside purposes. It is produced from sustainable raw materials and has greater dimensional stability and durability than the best tropical hardwoods.

SIBERIAN LARCH



T1L Siberian Larch

MATERIALS

Ethimo

NATURAL RATTAN



WN Natural Rattan

Rattan is a natural fibre made from the stem of a certain kind of palm. Flexible and pliant, it is easy to work and weave into various objects. A typical material for outdoor furniture in the fifties, it is actually quite delicate and must be treated carefully when used outside, protected from bad weather and aggression by atmospheric agents. It is recommended for use in covered spaces.

WICKER



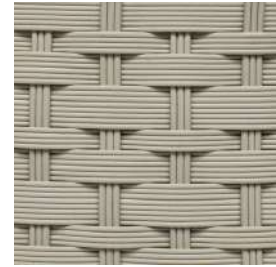
W20 Etwick Bark



W21 Etwick White



*W22 Lightwick
Warmgrey*



*W23 Lightwick
Warmwhite*



*WNF Sand Beige
Tight Weave*



*WNH Sand Beige
Wide Weave*

MATERIALS

Ethimo

Ethimo Etwick fiber is completely recyclable and recreates wicker's natural look. It perfectly withstands the elements and the passage of time. It is handwoven and it has a rough finish which makes it perfectly natural to the touch and sight.

Ethimo Lightwick fibre is a weaving composed of a wire base with a diameter of 2 mm with a round section used to create different meshes carrying out an irregular, very comfortable pattern. Combined with the aluminium frame, it gives shape to outdoor elements characterized by extreme lightness and strength.

Ethimo Natwick fibre is a recyclable synthetic fibre in a natural and sand- colour finish, whose semi-circular section means it can be used fo especially light, dynamic weaving. Extremely resistant to atmospheric agents and wear.

Cleaning and maintenance

For normal cleaning and maintenance it is advisable to wash the fiber with pressurized water, using a non-abrasive sponge and mild soap or with a soft-bristled brush to better penetrate the cracks in the weave. It is recommended to not use tools that can scratch the surface of the fiber. Let the furniture dry in the sun. Cover with cushions only when it is completely dry.

ROPES



R70 Flat Rope Lava Grey



R71 Flat Rope Light Grey



R4 Round Rope Lava Grey



RCS Round Rope Sand



R1 Round Rope Light Grey



R2 Round Rope Taupe

MATERIALS

Ethimo

13



*RCD Round Rope
Dark Grey*



RCG Round Rope Grey



*R52 Round Rope
Ruby Wine*



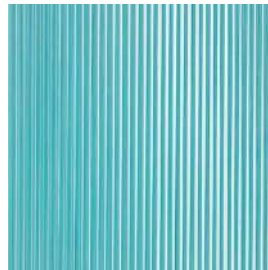
*R56 Round Rope
Olive Green*

The ropes used in the Ethimo collections are made specially for outdoor use and made in synthetic material that is highly resistant to UV rays, abrasion and atmospheric events. They are different in their cross-section (flat and round) and composition (polypropylene for the Flat Rope, acrylic for the Round Rope), and are used to create extremely practical and comfortable woven chairs and chair-backs.

Cleaning and maintenance

To clean the dirt and dust that may creep in between the rope weave, simply wash the furniture with pressurized water and allow it to dry thoroughly. Avoid covering the cabinet when it is still wet.

PVC



*RTW Pvc Rope
Turquoise*

In its constant research for new materials, suited specifically for outdoor use, Ethimo is pleased to introduce Pvc with a nylon core. This material is exceptionally resistant and sturdy, brightly coloured and superbly finished.

MATERIALS

Ethimo

STONES



MS Statuary Marble



*PSR Enamelled
Lava Stone Smeraldo*



*PLSB Enamelled
Lava Stone Opaque
White*



*PLA Lava Stone
Ardesia*

Ethimo uses natural stone, such as statuary marble and lava stone. The marble is given a treatment to protect its surface that leaves it with a matte finish. Lava stone, enamelled in emerald green, may vary in colour and show occasional irregularities. These are traits characteristic of both the natural stone and the artisan finish. After specific treatment, surfaces in marble and enamelled lava stone ensure exceptional hygiene, resistance to atmospheric agents, staining, scratching and low water absorption. They are also highly resistant to wear and tear and differences in temperature.

Cleaning and maintenance

We recommend washing the surface with a non-abrasive sponge and neutral soap.

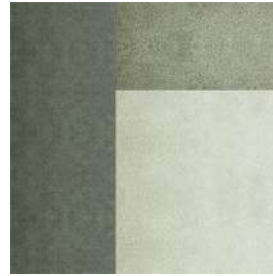
CERAMIC STONE



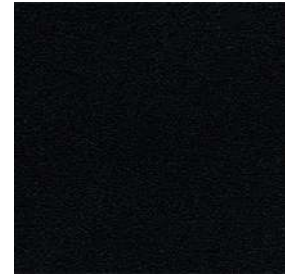
LI Ice White



LR Stone Graphite



LL Disegno (LI. LR. LS)



LN Slate Grey



LS Sand



LG Dove Grey

MATERIALS

Ethimo



LB White



LT Grey



LP Piombo Silk



LV Black Vulcano

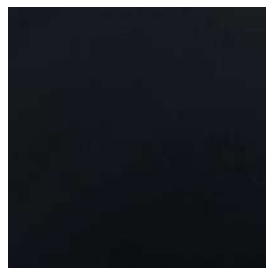
Ceramic is an ideal material for outdoor use, extremely resistant to frost, wear, scratches and abrasion. Suitable for counters and table tops because it is antibacterial and totally compatible with foodstuffs. The finishes chosen by Ethimo reproduce the authenticity of natural stone or the resin-coated effect in slate black and dove grey.

CONCRETE



CS Concrete

LAMINATE



HN Intense Black

MATERIALS

Ethimo

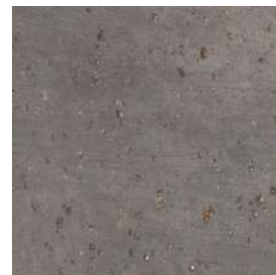
TERRACOTTA



C64 Terracotta



C65 Red Earth

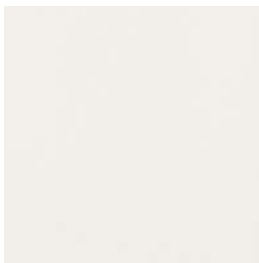


C66 Mud Grey

The clay which the garden lamps Step are made of, occurs naturally in one of the most beautiful areas of Tuscany.

The clay comes to life in the hands of experienced workers in the furnaces of the Val di Chiana, adapting to the shape of the mold. Removed from the mold, the workpiece is purified by imperfections. After a slow and homogeneous phase of dehydration, the products are placed in ovens for cooking, which requires about 3 days, reaching a maximum temperature of about 1000 degrees.

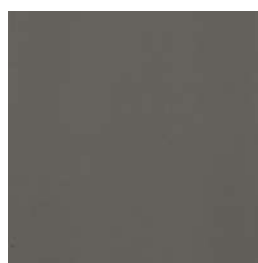
METAL – Stainless Steel



*31 Textured Matt
Lily of the Valley*



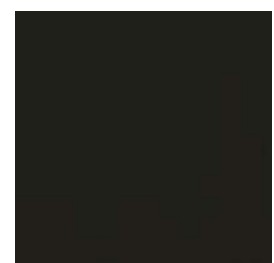
*43 Textured Matt
Warmwhite*



44 Textured Matt Warmgrey



40 Textured Matt Mud Grey



*48 Textured Matt
Sepia Black*



*51 Textured Matt
Coffee Brown*



G Textured Matt Dark Grey



*38 Textured Matt
Olive Green*



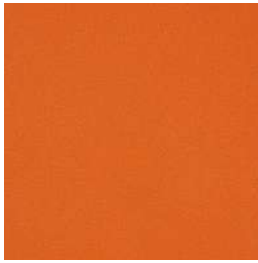
*32 Textured Matt
Sage Green*



39 Matt Bamboo Green

MATERIALS

Ethimo



45 Textured Matt Orange



47 Matt Poppy Red



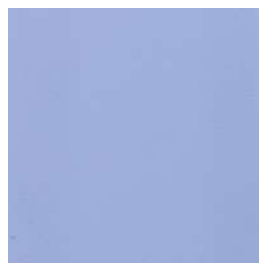
R Textured Matt Warmred



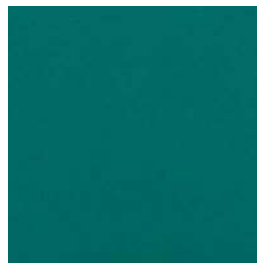
34 Glossy Periwinkle Lilac



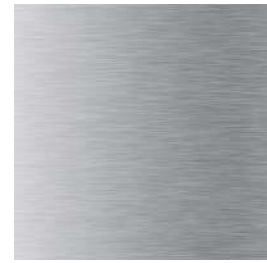
54 Textured Matt Iris Blue



*41 Textured Matt
Plumbago Blue*



55 Textured Peacock



00 Inox

Steel is an alloy of iron and carbon, with a carbon content of less than 2%. Steel has properties that vary depending on the chemical composition (quantity of carbon and quantity of other alloying elements), the thermosetting treatments and the production process. In order to ensure resistance to rust, Ethimo steel is subjected to a complex corrosion-protection and painting treatment. Thermosetting epoxy powders enriched with scratchproof material (Teflon) are used for painting. UV resistance is guaranteed for 10 years.

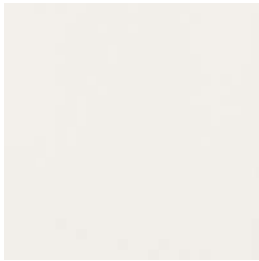
Cleaning and maintenance

The metal is extremely hardwearing and durable and does not require any special maintenance. It can be cleaned using a non-abrasive sponge or soft cloth, water and a non-corrosive detergent. Do not use abrasive sponges or aggressive products under any circumstances as these could damage the surface and compromise the rust-resistant layer. It is advisable not to leave plastic materials directly in contact with metal surfaces. The plastic could chemically alter the paint on the surface of the piece of furniture. To repair any scratches, request paint for touch-ups.

MATERIALS

Ethimo

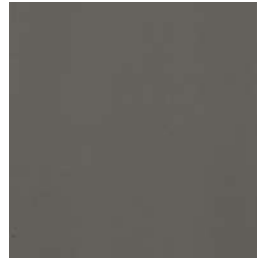
METAL – Aluminium



31 Textured Matt
Lily of the Valley



43 Textured Matt
Warmwhite



44 Textured Matt Warmgrey



48 Textured Matt
Sepia Black



51 Textured Matt
Coffee Brown



G Textured Matt Dark Grey



38 Textured Matt
Olive Green



54 Textured Matt Iris Blue



52 Aluminium



20 Brass-plated Aluminium

Aluminium is a non-ferrous metal that combines high mechanical strength with a lightweight nature and is therefore particularly suitable for manufacturing furniture. Provided it is treated correctly, it offers good resistance to corrosion. Aluminium is coloured using powder coating: after chemical pre-treatment, a coloured epoxy powder is applied and baked in the oven at high temperatures. The resulting benefits are ease of cleaning and the endless possibilities in terms of colour finishes.

Cleaning and maintenance

Like with steel, aluminium is extremely hardwearing and durable and does not require any special maintenance. It can be cleaned using a non-abrasive sponge or soft cloth, water and a non-corrosive detergent. Do not use abrasive sponges or aggressive products under any circumstances. It is advisable not to leave plastic materials directly in contact with metal surfaces. The plastic could chemically alter the paint on the surface of the piece of furniture. To repair any scratches, request paint for touch-ups.

MATERIALS

Ethimo

GLASS



V1 Transparent Fumé



V2 Transparent Amber



V3 Transparent Light Anthracite



V4 Acid-etched Fumé



V5 Acid-etched Amber



V6 Acid-etched Light Anthracite



VBA White Acid-etched

lass is solid, light, transparent, and sustainable because it is 100% recyclable. Known and used for thousands of years, it is made from silica, which, at extremely high temperatures, turns into an incandescent material that can then be moulded to make infinite shapes. Blown glass from Murano in particular exploits an art invented in the first century B.C., its expressive language the result of skilled artisans who, by blow through a long tube, swell this material and lend it form.

MATERIALS

Ethimo

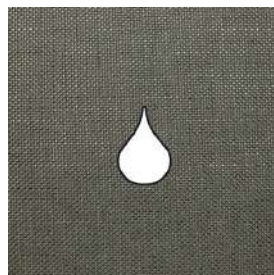
FABRICS

All the fabrics in the Ethimo collection are specifically made for outdoor use. Other than the particular softness to the touch, they offer the maximum resistance to UV rays and guarantee a long life. A specific treatment protects them from liquids and dirt and makes them easy to clean, with a soft sponge and mild soap, or in a washing machine at low temperatures. Especially all Waterproof fabrics are characterized by special PVC layer, which makes them 100% waterproof and stain repellent. 40,000 Martindale.

Acrylic Waterproof



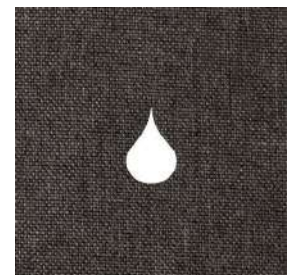
AW25 Nature White



AW24 Nature Grey



AW28 Black Stone



AW39 Espresso

Acrylic



A25 Nature White



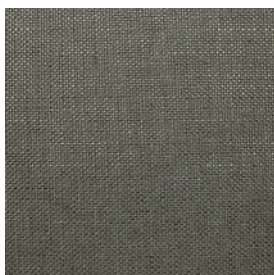
A1 Ivory



A19 Acrylic Grey Sun



A12 Dove Grey



A24 Nature Grey



A39 Espresso



A28 Black Stone



A27 Blue Narval

MATERIALS

Ethimo



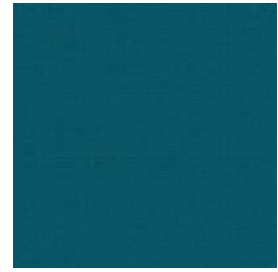
A17 Avio



A10 Wisteria Lilac



A15 Leaf



A56 Charron



A65 Yellow Apache



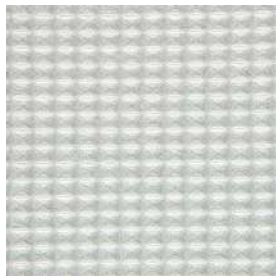
A31 Red Navajo



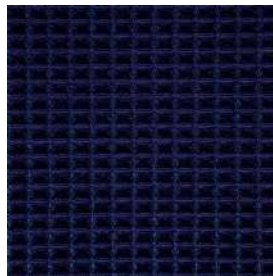
A29 Cherry Red



A76 Red Earth



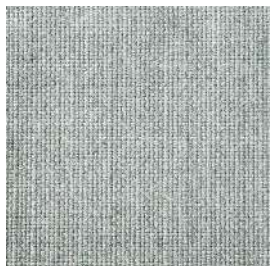
A43 Mariaflora White



A42 Mariaflora Blue



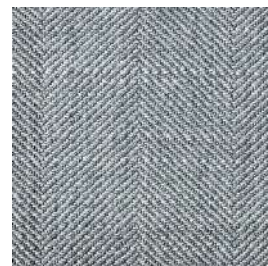
A44 Mariaflora Taupe



046 Lichen



047 Lichen Melange



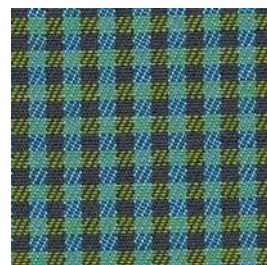
048 Lichen Twill



*A109 Checks
Black and White*



A58 Checks Breeze



*A59 Checks
Oliver Green*



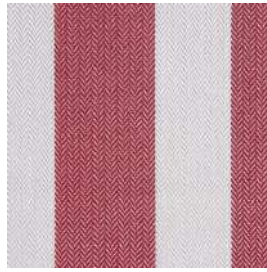
*A57 Checks
Wild Berry*

MATERIALS

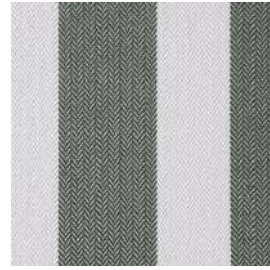
Ethimo



*A108 Wide Stripes
Blue Navy/White*



*A105 Wide Stripes
Red White*



*A103 Wide Stripes
Classic Green/White*



*A106 Thin Stripes
Blue Navy/White
Piping Blue*

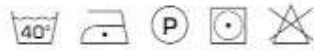


*A119 Thin Stripes
Red/White
Piping Red*

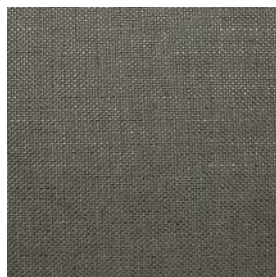


*A101 Thin Stripes
Classic Green/White
Piping Green*

Polyester



P25 Hydro White



P24 Hydro Grey



P7 White



P9 Dove Grey



P60 Hydro Acqua



P61 Green Sardinia



P63 Blu Ink



P77 Red

MATERIALS

Ethimo



*P10 Rubelli Outcross
Olive Blue*



*P12 Rubelli Outcross
Gris Sauge*



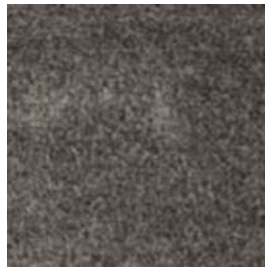
*P11 Rubelli Outcross
Caraibe Rose*

P10

Velvet



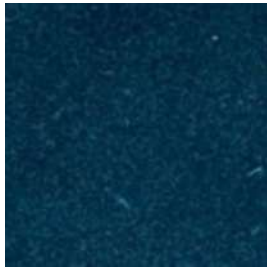
A34 Velvet Artic Grey



AV9 Velvet Smoke



A30 Velvet Blue



AV23 Velvet Pavone



AV21 Velvet Acqua

AV9



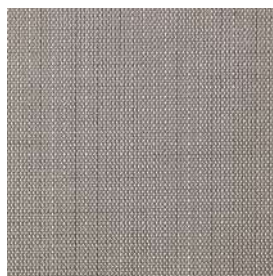
AV25 Velvet Arancio

Velum

100% Acrylic - UV resistant 7/8 - Water resistant - Stain proof



V78 White Stone



V75 Grey Stone



V79 Velum Swell

MATERIALS

Ethimo

Ethitex



E57 Ivory



E52 Dove Grey



E37 Cappuccino



E51 Lilac



E53 Blue

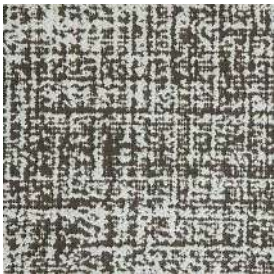


E56 Red



E38 Tartan

Polypropylene



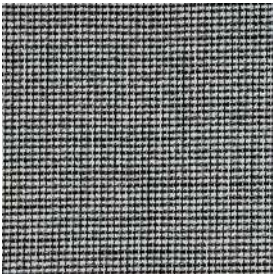
*PP2 Rubelli Outmap
Ardoise*



*PP3 Rubelli Outmap
Laguna*



*PP1 Rubelli Outmap
Chartreuse*



*PP52 Black&White
Chess*



PP51 Lava



PP50 Corda

MATERIALS

Ethimo



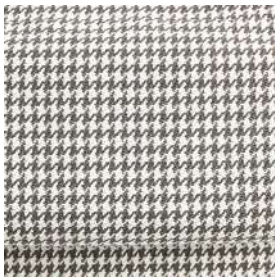
*PP35 Geometric
Terra*



*PP36 Geometric
Marine*



PP53 Red Diamonds



PP32 Pool Ebano



PP33 Plaid Beige



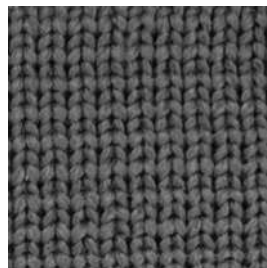
PPVA Lime



PPR Tricot Stripes



PPP Tricot Panna



PPG Tricot Grigio

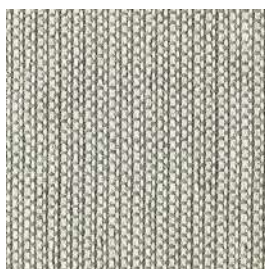


PPB Tricot Bordeaux

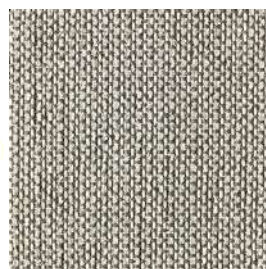
Canvas



*AC80 Creamy-White
Canvas*



*AC81 Creamy-White
Light Grey*



*AC82 Creamy-White
Dove Grey*

MATERIALS

Ethimo

AC84



A83 Dove Grey Blue Green

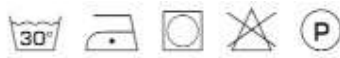


AC84 London Grey



A85 Tobacco Brown

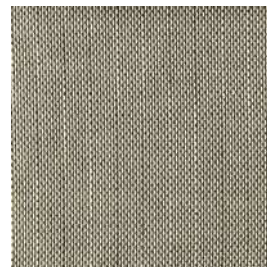
Raw



AR80 Creamy-White Raw



AR81 Creamy-White Light Grey



AR82 Creamy-White Dove Grey

AR80



AR83 Dove Grey Blue Green



AR84 London Grey Raw



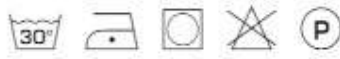
AR85 Tobacco Brown Coffee Brown

82

MATERIALS

Ethimo

Soft



*AS80 Creamy-White
Soft*



*AS81 Creamy-White
on Light Grey*



*AS82 Creamy-White
on Dove Grey*

AR83 Dove



*AS83 Dove Grey on
Blue Green*



*AS84 London Grey
Soft*



AS85 Tobacco Brown

AS81

Rain Cover

100% Polyester + PVC layer – Water column 80 cm – Water-resistant – Stain-proof



*Rain Cover Ethi-Care
fabric*

MATERIALS

Ethimo

Rug collection

Water-resistant – UV resistant



PP80 Green Seaweed



PP81 Blue Indigo



PP83 Clay Terracotta



PP84 Coconut

The collection is primarily designed and treated for outdoor use, UV (color fading) and weather resistant. Carpets can be stain-proof, anti-mold and water repellent treated. Carpets are also perfectly suitable for indoor use.