

WE HAVE OUR OWN PHILOSOPHY AND
WE WOULD LIKE TO SHOW IT TO YOU
IN 4 IMAGES



Architema
FURNITURE



1 WE THINK THAT THE PLANNING OF A PUBLIC SPACE IS MORE SIMILAR TO THE CREATION OF A SCENOGRAPHY THAN THE DESIGN OF AN INTERIOR



2 IF YOU ARE DESIGNING FOR A PRIVATE CLIENT, YOU WILL NEED TO KNOW YOUR CUSTOMER VERY WELL TO BE ABLE TO SEW THE RIGHT HOUSE ONTO THEM



3

IF YOU ARE DESIGNING FOR THE COMMUNITY YOU WILL HAVE TO THINK ABOUT THE HETEROGENEITY OF THE PEOPLE WHO WILL USE A HOTEL, A RESTAURANT OR A CRUISE SHIP, YOU WILL HAVE TO CREATE AN EXPERIENCE



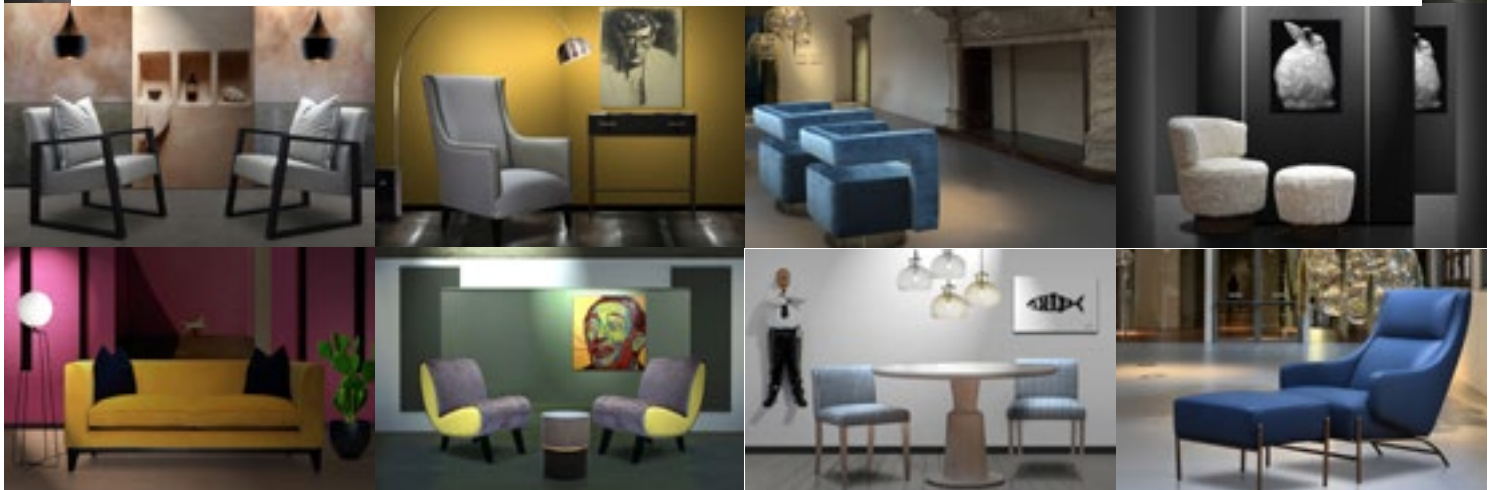


EVERY DAY A PUBLIC SPACE MUST REPRESENT ITSELF, ITS ATMOSPHERE
AND ITS SPECIFICITIES

This is why we think that the scenography is fundamental

4

CLICK ON THIS PAGE TO CONNECT TO OUR 'MOODS',
capsule collections in various styles to best show you the versatility and
the richness of our collection



OTTA
(our chief dog)

WISHES YOU A GREAT DAY

