

# Rivestimenti e finiture

## Upholsteries and finishes

### **AVVERTENZE GENERALI**

I colori chiari, non devono essere messi a contatto con tessuti e capi d'abbigliamento trattati con coloranti non fissati, o con scarse solidità di tintura, onde evitare macchie ed aloni di coloranti di cui non possiamo garantire la pulitura.

I tessuti spalmati (ecopelli) possono essere sanificati superficialmente come da decreto del Ministero della Salute con soluzioni di acqua e alcool etilico al 70% e prodotti disinfettanti commerciali pronti all'uso. Si consiglia di provare il prodotto su un angolo nascosto della superficie da pulire.

Evidenziamo speciali trattamenti, antimicrobici, antibatterici e antimicotici, che caratterizzano da sempre alcuni nostri rivestimenti, per creare un'efficace barriera difensiva contro batteri, acari e funghi, uniti ad eccezionali caratteristiche di praticità e durata nel tempo.

### **GENERAL WARNINGS**

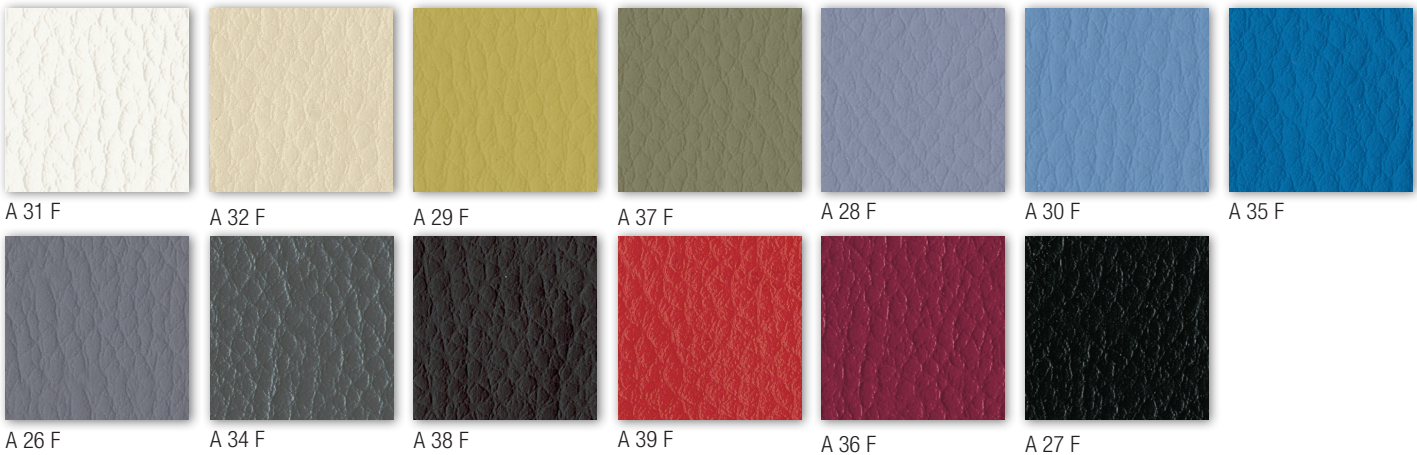
To avoid permanent stains, the lighter colours of the article should not be brought into contact with textiles and clothing unfixed dyes. We cannot guarantee the ability to remove unknown dyes from light coloured product.

The coated fabrics (eco-leathers) can be superficially sanitized as per the Decree of the Italian Ministry of Health with solutions of water and 70% ethyl alcohol and commercial disinfectant products ready for use. We suggest to test the product on a small hidden corner of the surface you need to clean.

We focus your attention on special antimicrobial, antibacterial and antifungal treatments, which have always distinguished some of our coatings to create a valid defensive barrier against bacteria, mites and fungi, combined with exceptional features of practicality and durability.

**Cat. A**  
 ECOPELLE  
 ECOLEATHER

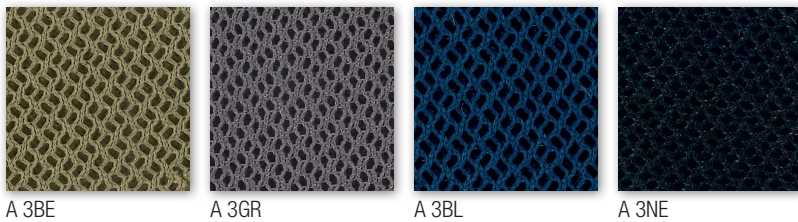
Resistenza alla fiamma - Fire resistance  
 Certificato Classe 1 UNI 9175 CL. 1 IM  
 87,5% P.V.C. plastificato - 12,5% cotone  
 (Martindale 100.000)



**Cat. A**  
 TESSUTO POLIESTERE  
 POLYESTER FABRIC

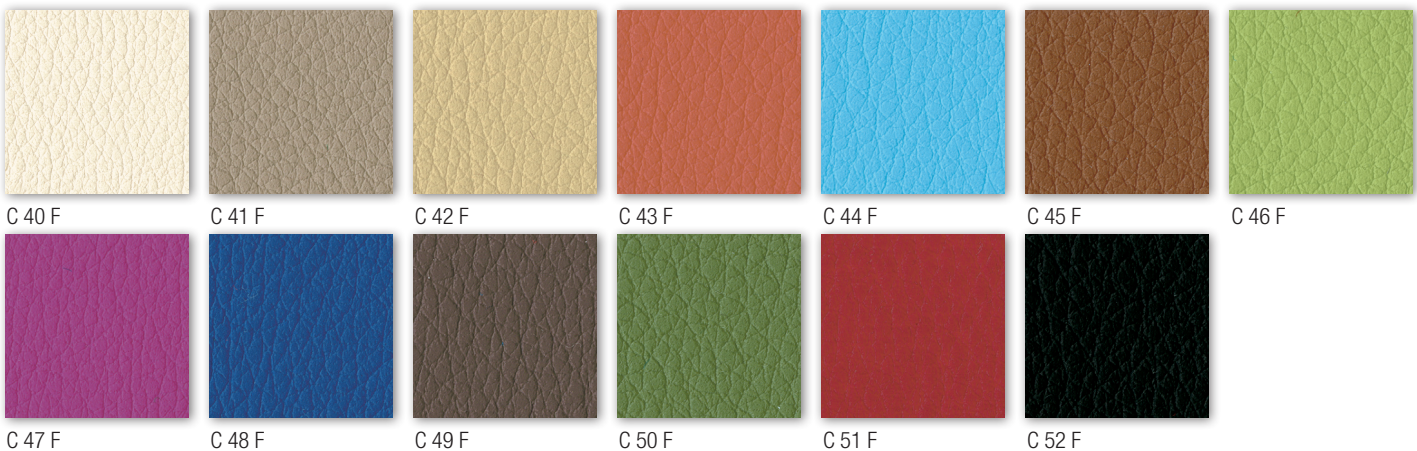
Material: 100% Polyester  
 Certifications: Classe 1 IM - BS 5852:2006 Pass Clause 11, NI/5  
 Abrasion resistance: UNI EN ISO 12947 (Martindale 60.000)

**Utilizzabile come rivestimento su tutta la gamma Kastel e come rete schienale solo per il modello KEY BOLD**  
**It can be used on the entire Kastel range and as backrest mesh on the KEY BOLD model only**



**Cat. C**  
 ECOPELLE  
 ECOLEATHER

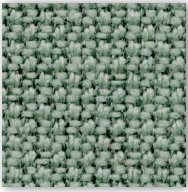
SKILL/SECRET  
 Resistenza alla fiamma - Fire resistance  
 Certificato Classe 1 UNI 9175 CL. 1IM - EN 1021 - BS 5852  
 69% P.V.C. plastificato - 30% cotone - 1% poliuretano  
 (Martindale 50.000)



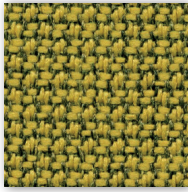


**Cat. C**  
TESSUTO  
FABRIC

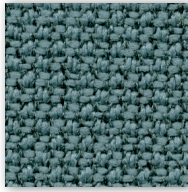
Material: 98% post consumer recycled polyester - 2% polyester  
 Flammability: EN 1021 1&2 · BS 5852 0&1 CA · TB 117-2013.  
 Will also pass other flammability standards.  
 Flame retardant performance is dependent upon the foam used.  
 Contain no Flame Retardant chemical.  
 Abrasion resistance: rubs · BS EN 14465 · BS EN ISO 12947-2 (Martindale 100.000)



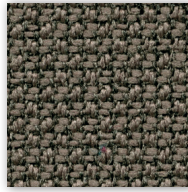
C 30 C



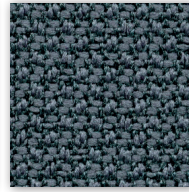
C 31 C



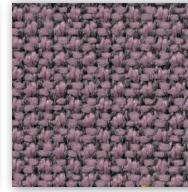
C 32 C



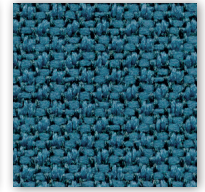
C 33 C



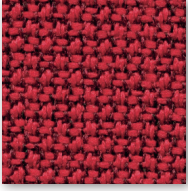
C 34 C



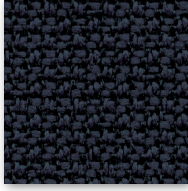
C 35 C



C 36 C



C 37 C



C 38 C

**Cat. C**  
TESSUTO  
FABRIC

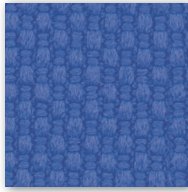
Tessuto altamente ignifugo  
 Certificato Classe 1 Ministero dell'Interno  
 Fireproof fabric - Tissu non feu  
 Brandfester Bezug - Tela ignifuga  
 100% Poliestere Trevira CS  
 (Martindale 70.000)



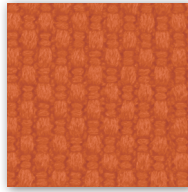
C 381



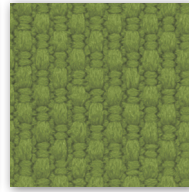
C 38 T



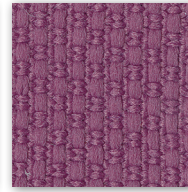
C 383



C 380



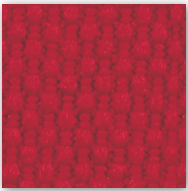
C 385



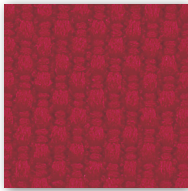
C 38 L



C 38 H



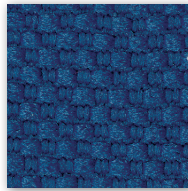
C 382



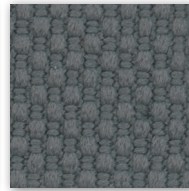
C 386



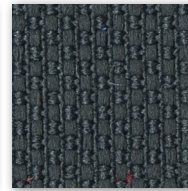
C 387



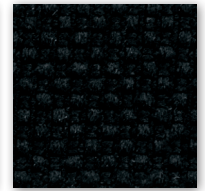
C-38



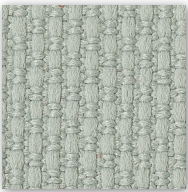
C 384



C 38 A



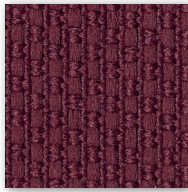
C 388



C 38 G



C 38 M



C 38 P

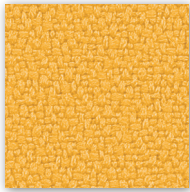


**Cat. C**  
TESSUTO  
FABRIC

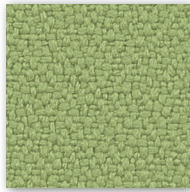
Tessuto altamente ignifugo  
Certificato Classe 1 Ministero dell'Interno  
Fireproof fabric - Tissu non feu  
Brandfester Bezug - Tela ignifuga  
100% Xtreme FR®  
(Martindale 100.000)



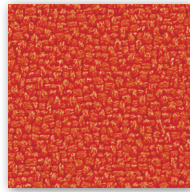
C 335



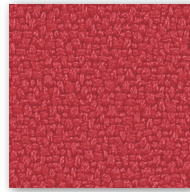
C 336



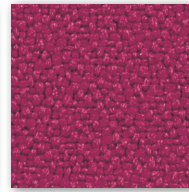
C 332



C 334



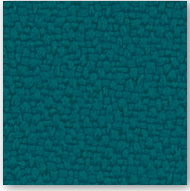
C 329



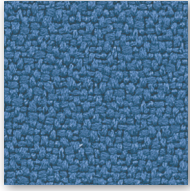
C 337



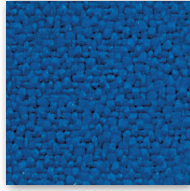
C 327 (Dark brown)



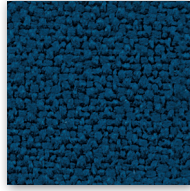
C 340



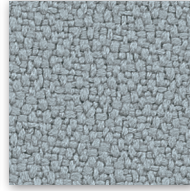
C 325



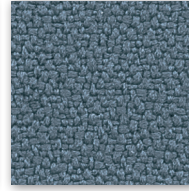
C 326



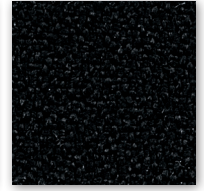
C 330



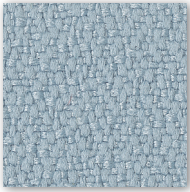
C 331



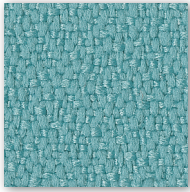
C 324



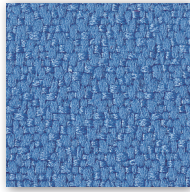
C 328



C 349



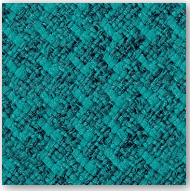
C 333



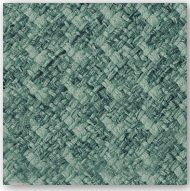
C 338

**Cat. D**  
TESSUTO  
FABRIC

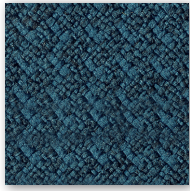
Post consumer recycled polyester  
98% Polyester 2%  
Flammability EN 1021 1&2  
BS 5852 O&1 - CA TB 117-2013  
(Martindale 100.000)



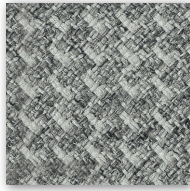
D 51B



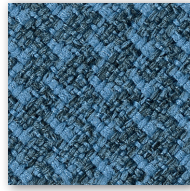
D 52B



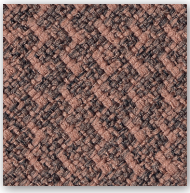
D 53B



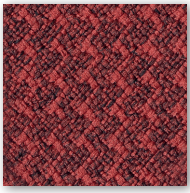
D 54B



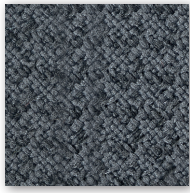
D 55B



D 56B



D 57B



D 58B



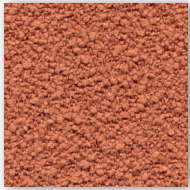
D 59B



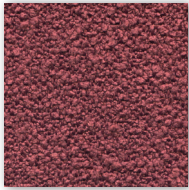
## Cat. D

TESSUTO RICICLATO E RICICLABILE  
RECYCELD AND RECYCLABLE FABRIC

Material: 100% PL RECYCLED SEAQUAL  
Certifications: Classe 1 IM - BS 5852 Crib N°5 - EN 1021 Part 1-2 - Calif. Bull.117 June 2013  
Environment: STANDARD 100 by OEKO-TEX® EU Ecolabel  
Abrasion resistance: UNI EN ISO 12947 (Martindale 100.000)



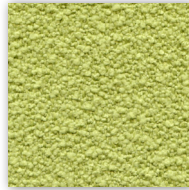
D 41P



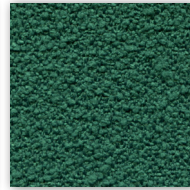
D 42P



D 40P



D 43P



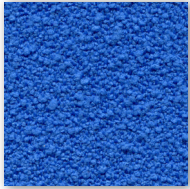
D 44P



D 45P



D 46P



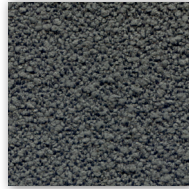
D 47P



D 48P



D 49P



D 50P



D 51P

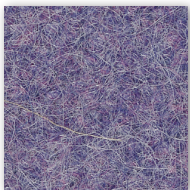


D 52P

## Cat. D

TESSUTO  
FABRIC

Resistenza alla fiamma - Fire resistance  
Certificato Classe 1 IM EN 1021 Part. 1-2  
75% Lana - 25% Poliammide / 75% Wool - 25% Polyammide  
(Martindale 100.000)



D 501



D 502



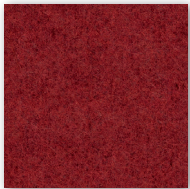
D 503



D 504



D 505



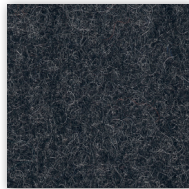
D 506



D 507



D 508



D 509

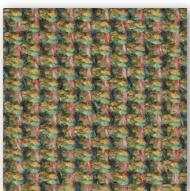
## Cat. D

TESSUTO  
FABRIC

100% post-consumer recycled polyester  
Abrasion: rubs (EN ISO 12947-2) Martindale 120.000  
Flammability: BS EN 10211&2 Cigarette and Match  
CA TB 117-2013



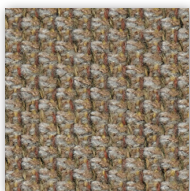
OEKO-TEX®  
CONFIDENCE IN TEXTILES  
STANDARD 100



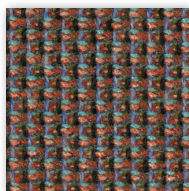
D 40Y



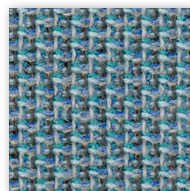
D 41Y



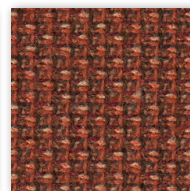
D 42Y



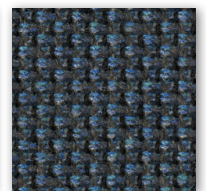
D 43Y



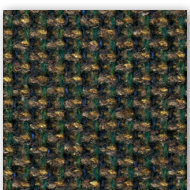
D 44Y



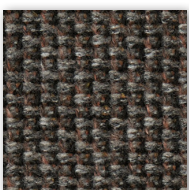
D 45Y



D 46Y



D 47Y

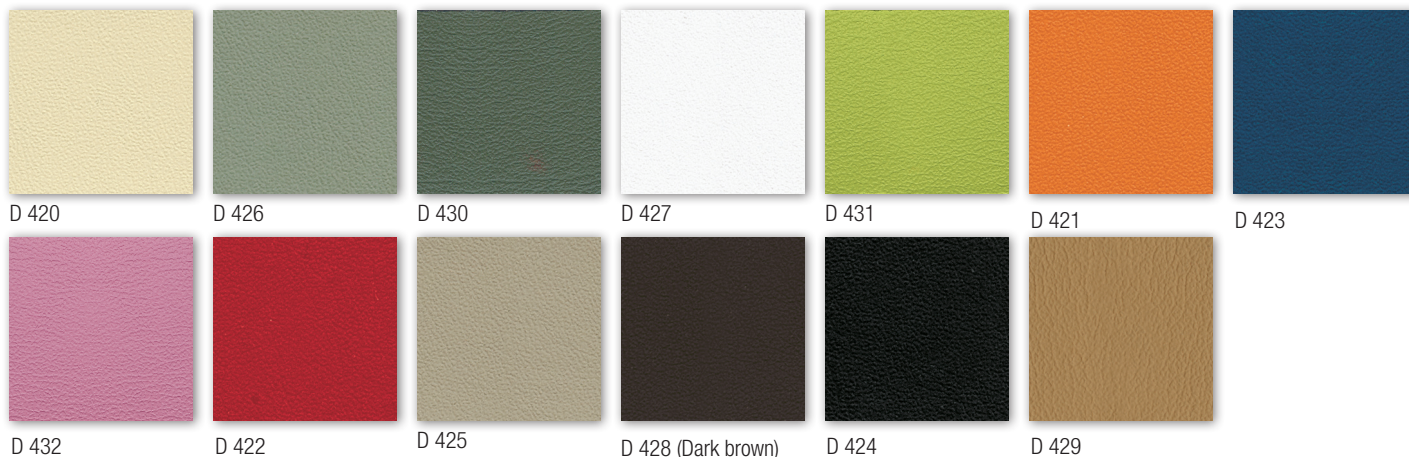


D 48Y



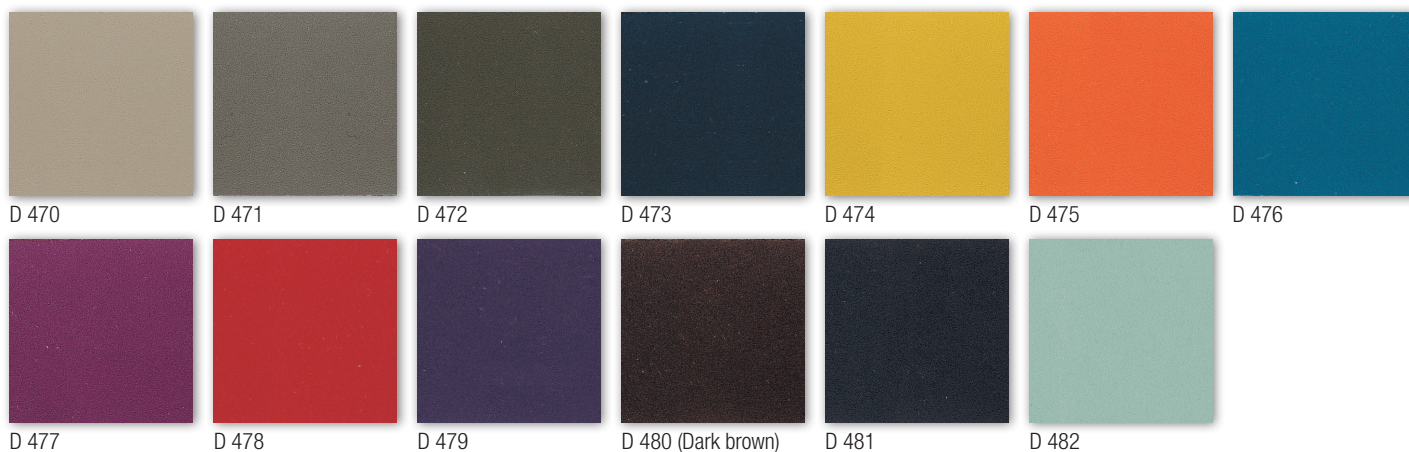
**Cat. D**  
**ECOPELLE**  
**ECOLEATHER**

Trattamento antimicrobico - Antimicrobial treatment  
 Impermeabilità-Waterproof  
 Resistenza fiamma-Fire resistance  
 UNI 9175/87 CL.1IM - EN 1021 BS 5852  
 63% Poliuretano / Polyurethane - 29% Cotone - Cotton 8% PES  
 IMO A. 652  
 (Martindale 150.000)



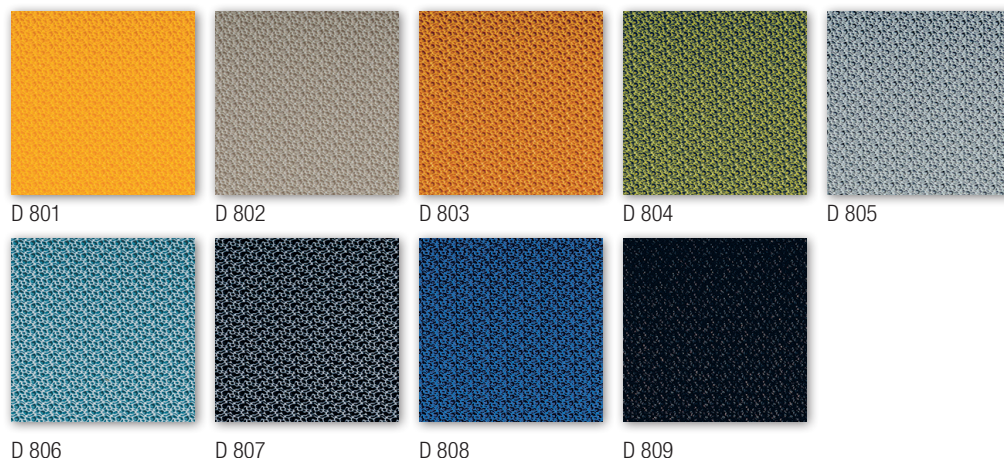
**Cat. D**  
**ECOPELLE**  
**ECOLEATHER**

Trattamento antimicrobico - Antimicrobial treatment  
 Impermeabilità-Waterproof  
 Resistenza fiamma-Fire resistance  
 UNI 9175/87 CL.1IM - EN 1021 BS 5852  
 63% Poliuretano / Polyurethane - 29% Cotone - Cotton 8% PES  
 IMO A. 652  
 (Martindale 150.000)



**Cat. D**  
**TESS. TECNICO**  
**TECHNICAL FABRIC**

Tessuto ignifugo - Fireproof fabric - Tissu non feu - Brandfester Bezug - Tela ignifuga  
 Classe 1IM - DIN 4102 B2 - NF P 92-503/M2  
 100% Vinyl-compound - 100% Polyester Ultra Hi-Loft<sup>2TM</sup> Backing  
 PERMABLOK<sup>3B</sup> - Waterproof  
 (Martindale > 100.000)





**Cat. P**  
 VERA PELLE  
 GENUINE LEATHER

Vera pelle - Genuine leather  
 Cuir - Leder - Piel auténtica  
**A richiesta disponibili altri colori.**  
**By request any other colours available.**



P 901



P 915



P 920



P 917



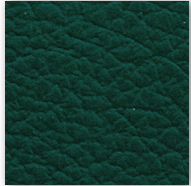
P 909



P 905



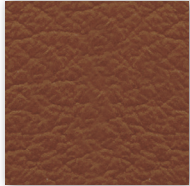
P 911



P 910



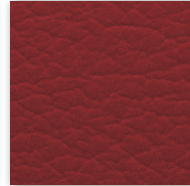
P 912



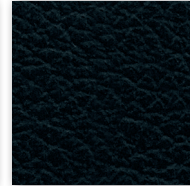
P 908



P 902 (Dark brown)



P 914



P 903

ECOPELLE  
 ECOLEATHER

Solo per schienale trapuntato modello  
 Only for quilted back model

**KLINT**

SKILL/SECRET  
 Resistenza alla fiamma - Fire resistance  
 Certificato Classe 1 UNI 9175 CL. 1IM - EN 1021 - BS 5852  
 69% P.V.C. plastificato - 30% cotone - 1% poliuretano  
 (Martindale 50.000)



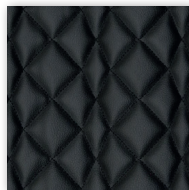
40T



41T



49T



52T

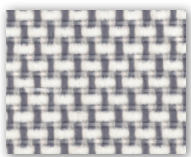
Solo per modello  
 Only for model  
**KEY LINE**

Rete-Mesh-Resille-Membran-Red  
 70% Polyester - 30% Polyamid  
 Flammability: EN 1021:2014 part 1  
 (cigarette test)  
 (Martindale 170.000)

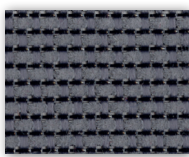
4902  
 SHRINX

Solo per modello  
 Only for model  
**KUPER, KARMA,  
 KORIAM, KOSMO**

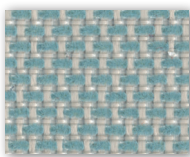
Rete - Mesh - Resille  
 Membran - Red  
 64% PL - 36% PA  
 Martindale 100,000



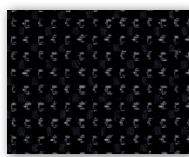
**B** BEIGE



**G** GRIGIO/GREY



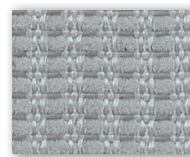
**V** VERDE/GREEN



**N** NERO/BLACK



D 218



D 221



D 222

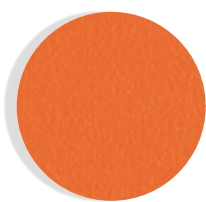
## KICCA KALEA

COLORI POLIPROPILENE  
POLYPROPYLENE COLOURS



**C**

Crema  
Cream  
Crème  
Crema  
Crema



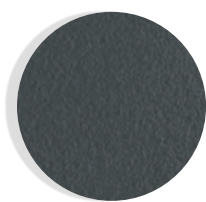
**A**

Arancio  
Orange  
Orange  
Orange  
Naranja



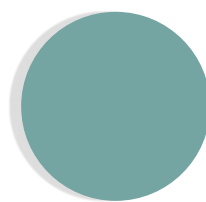
**B**

Blu  
Blue  
Bleu  
Blau  
Azul



**G**

Grigio  
Grey  
Gris  
Grau  
Gris



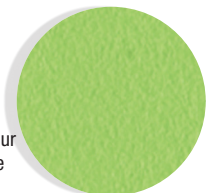
**P**

Turchese  
Turquoise  
Turquoise  
Türkis  
Turquesa



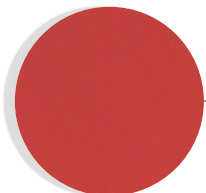
**T**

Tortora  
Dove-colour  
Tourterelle  
Taube  
Arena



**V**

Verde  
Green  
Vert  
Grün  
Verde



**R**

Rosso  
Red  
Rouge  
Rot  
Rojo



**N**

Nero  
Black  
Noir  
Schwarz  
Negro

## KROSS

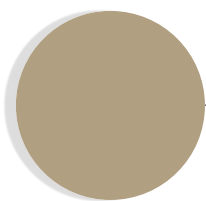
COLORI POLIPROPILENE PER SCOCCA E TELAIO 4-GAMBE  
POLYPROPYLENE COLOURS FOR SHELL AND 4-LEG FRAME

### SCOCCA / SHELL / COQUE / SCHALE / CARCASA



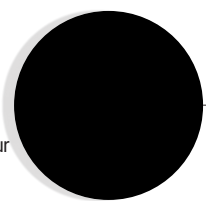
**B**

Bianco  
White  
Blanc  
Weiss  
Blanco



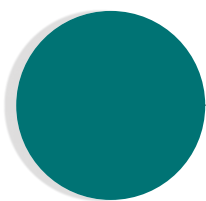
**T**

Tortora  
Dove-colour  
Tourterelle  
Taube  
Arena



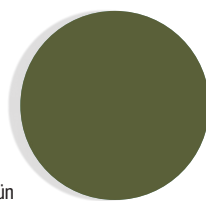
**N**

Nero  
Black  
Noir  
Schwarz  
Negro



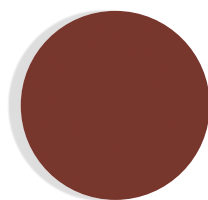
**A**

Ottanio  
Teal  
Octane  
Oktan-grün  
Octanio



**V**

Verde  
Green  
Vert  
Grün  
Verde



**R**

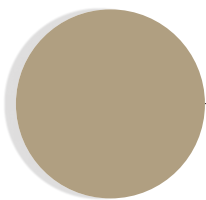
Rosso  
Red  
Rouge  
Rot  
Rojo

### TELAIO / FRAME / PIETEMENT / GESTELL / ESTRUCTURA



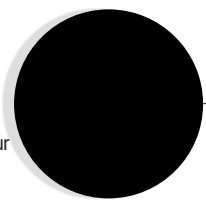
**AB**

Bianco  
White  
Blanc  
Weiss  
Blanco



**AT**

Tortora  
Dove-colour  
Tourterelle  
Taube  
Arena



**AN**

Nero  
Black  
Noir  
Schwarz  
Negro



**FL**

Fibra legno  
Wood fiber  
Fibre de bois  
Holzfaser  
Fibra de madera



## KICCA ONE

COLORI POLIPROPILENE RINFORZATO FIBRA VETRO  
FIBERGLASS-REINFORCED POLYPROPYLENE COLORS



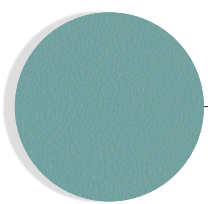
**C**

Crema  
Cream  
Crème  
Crema  
Crema



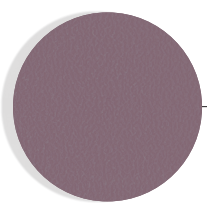
**G**

Grigio  
Grey  
Gris  
Grau  
Gris



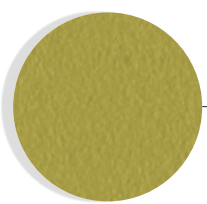
**P**

Turchese  
Turquoise  
Turquoise  
Türkis  
Turquesa



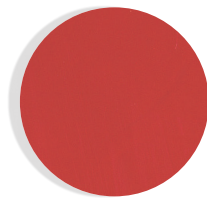
**F**

Lilla  
Lilac  
Lila  
Lila  
Lila



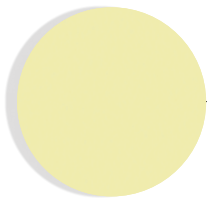
**V**

Verde  
Green  
Vert  
Grün  
Verde



**R**

Rosso  
Red  
Rouge  
Rot  
Rojo



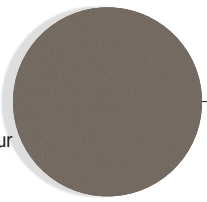
**Y**

Giallo  
Yellow  
Jaune  
Gelb  
Amarillo



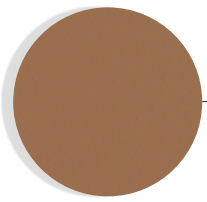
**T**

Tortora  
Dove-colour  
Tourterelle  
Taube  
Arena



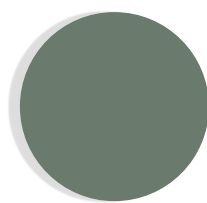
**L**

Lava



**K**

Caramello  
Caramel  
Karamell  
Caramelo



**E**

Salvia  
Desert sage  
Vert sage  
Graugrün  
Salvia

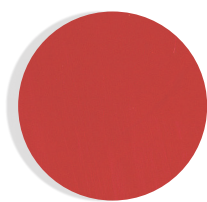
## KRIZIA

COLORI POLICARBONATO  
POLYCARBONATE COLOURS



**B**

Bianco  
White



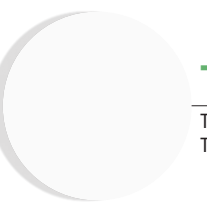
**R**

Rosso  
Red  
Rouge  
Rot  
Rojo



**M**

Moka



**T**

Trasparente  
Transparent



**N**

Nero  
Black  
Noir  
Schwarz  
Negro

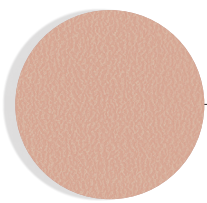
## KLIA

COLORI POLIPROPILENE RINFORZATO FIBRA VETRO  
FIBERGLASS-REINFORCED POLYPROPYLENE COLORS



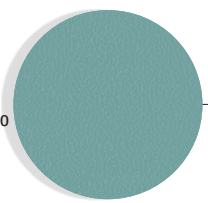
**C**

Crema  
Cream  
Crème  
Crema  
Crema



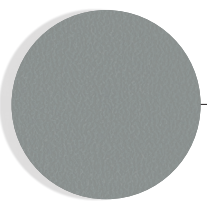
**A**

Rosa antico  
Old rose  
Vieux rose  
Altrosa  
Rosa antiguo



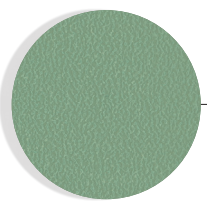
**P**

Turchese  
Turquoise  
Turquoise  
Türkis  
Turquesa



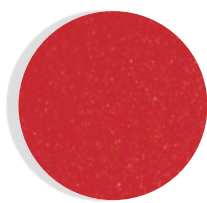
**G**

Grigio  
Grey  
Gris  
Grau  
Gris



**V**

Verde  
Green  
Vert  
Grün  
Verde



**R**

Rosso  
Red  
Rouge  
Rot  
Rojo



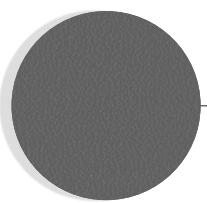
**T**

Tortora  
Dove-colour  
Tourterelle  
Taube  
Arena



**Y**

Giallo  
Yellow  
Jaune  
Gelb  
Amarillo



**S**

Grigio ardesia  
Slate grey  
Gris ardoise  
Schiefergrau  
Gris pizarra

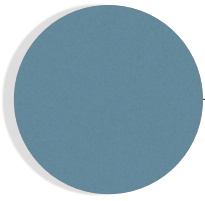
## KUARK

COLORI POLIETILENE  
POLYETHYLENE COLOURS



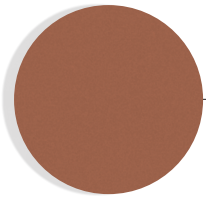
**BC**

Bianco  
White  
Blanc  
Weiss  
Bianco



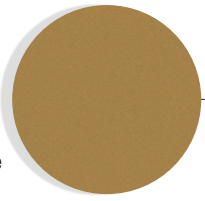
**AZ**

Azzurro  
Light Blue  
Bleu clair  
Hellblau  
Azul Claro



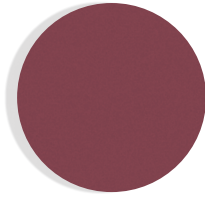
**TR**

Terracotta  
Terracotta  
Terre Cuite  
Terrakotta  
Terracotta



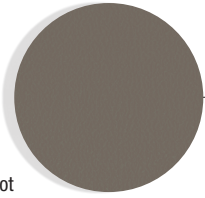
**SE**

Senape  
Mustard  
Moutarde  
Senf  
Mostaza



**BD**

Bordeaux  
Burgundy  
Bordeaux  
Bordeauxrot  
Budeo

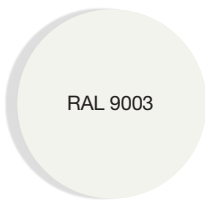


**LA**

Lava

## KENSHO

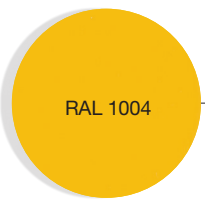
COLORI PIANI-BASI  
TOPS-BASES COLOURS



RAL 9003

**B**

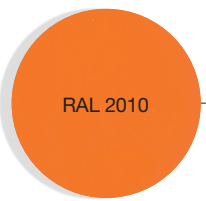
Bianco  
White  
Blanc  
Weiss  
Blanco



RAL 1004

**G**

Giallo  
Yellow  
Jaune  
Gelb  
Amarillo



RAL 2010

**A**

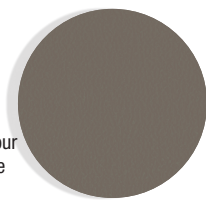
Arancio  
Orange  
Orange  
Orange  
Naranja



RAL 1019

**T**

Tortora  
Dove-colour  
Tourterelle  
Taube  
Arena

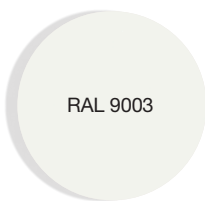


**L**

Lava

## KAPìO

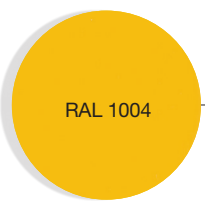
COLORI PIANI-BASI  
TOPS-BASES COLOURS



RAL 9003

**B**

Bianco  
White  
Blanc  
Weiss  
Blanco



RAL 1004

**G**

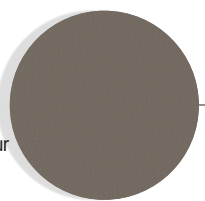
Giallo  
Yellow  
Jaune  
Gelb  
Amarillo



RAL 1019

**T**

Tortora  
Dove-colour  
Tourterelle  
Taube  
Arena

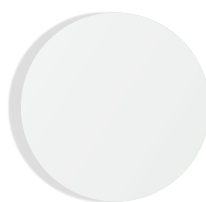


**L**

Lava

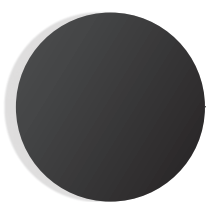


**PIANO IN HPL / HPL TABLE TOP / PLATEAU EN HPL / TISCHPLATTE / ENCIMERA EN HPL**



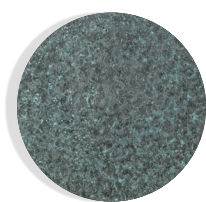
**B**

Bianco  
White  
Blanc  
Weiss  
Blanco



**N**

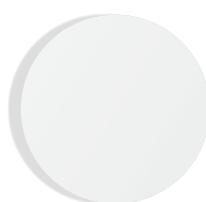
Nero  
Black  
Noir  
Schwarz  
Negro



**V**

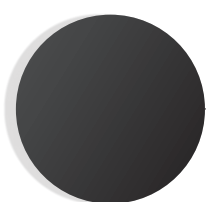
Verde rame  
Copper green  
Vert-de-gris  
Kupfergrün  
Verde cobre

**BASE IN TONDINO / ROD FRAME / PIÈTEMENT EN TORON / RUNDROHRGESTELL / BASE EN RODILLA**



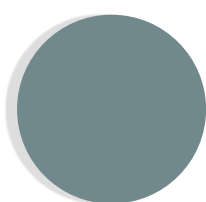
**B**

Bianco  
White  
Blanc  
Weiss  
Blanco



**N**

Nero  
Black  
Noir  
Schwarz  
Negro



**V**

Verde  
Green  
Vert  
Grün  
Verde