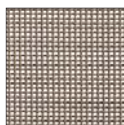


outdoor furniture

campioni di tessuti e verniciatura telai
samples of fabrics and lacquered frames
Muster von Stoffe und lackierten Rahmen
échantillons de tissus et des vernies des armatures



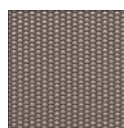
polluce-castore



TRO
fabric



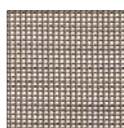
selene-medusa



thick
fabric



open-work
fabric



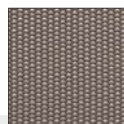
TRO
fabric



atena-dafne



calipso-fedra-circe



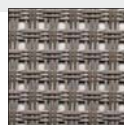
thick
fabric



open-work
fabric



ulisse-ulisse VIP-apollo



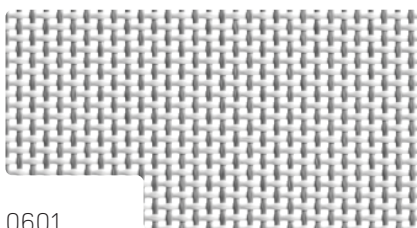
open-work
fabric



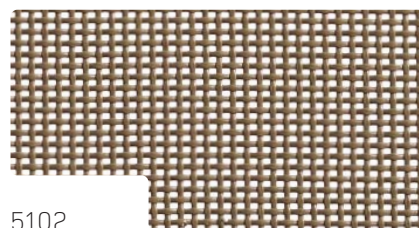
ulisse design



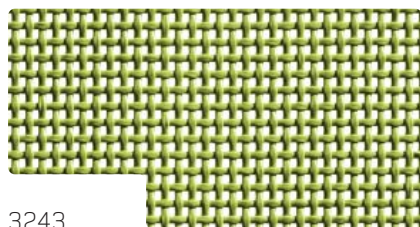
0108



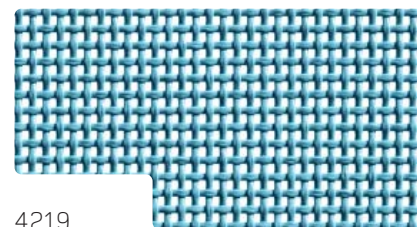
0601



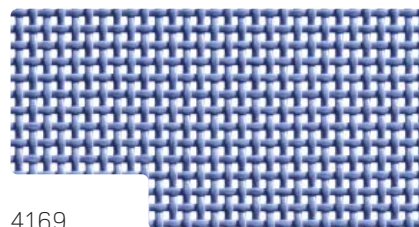
5102



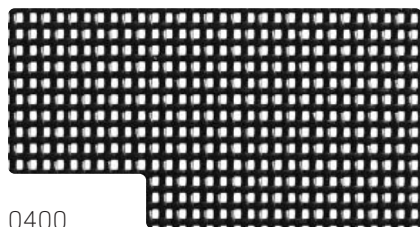
3243



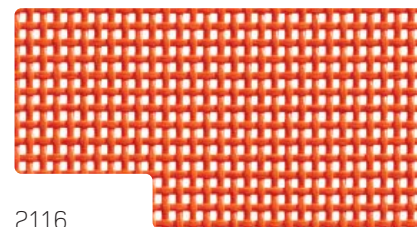
4219



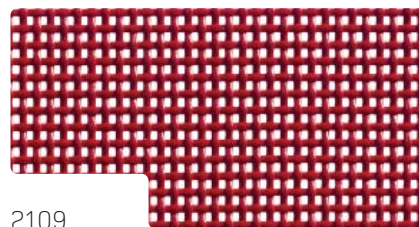
4169



0400



2116



2109



Fire retardant

CATAS®



Caratteristiche tecniche | Technical data

tessuto traforato TRO open-work TRO PVC fabric

Composizione: 70% polivinile 30% poliestere
Fibre analysis: 70% polyvinyl 30% polyester

Costruzione: ordito 6,10 - trama 5,30 fili/cm
Construction: warp 6,10 - weft 5,30 threads/cm

Spessore: 1,15 mm
Thickness: 1,15 mm

Altezza: 70 cm
Width: 70 cm

Peso: 560 gr/m²
Weight: 560 gr/sqm

Carico di rottura: 310 kg/5 cm ordito 270 kg/5 cm trama
Breaking load: 310 kg/5 cm warp 270 kg/5 cm weft



non candeggiare
don't bleach



è ammesso il lavaggio a mano
cold hand washing is permitted



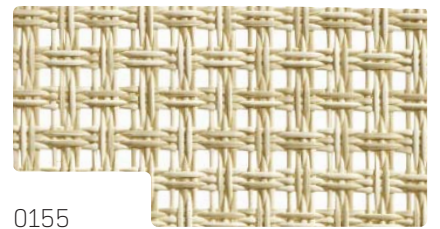
lavare in acqua fredda
only cold washing is permitted



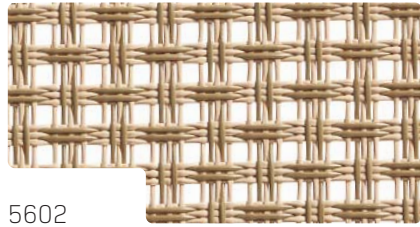
0108



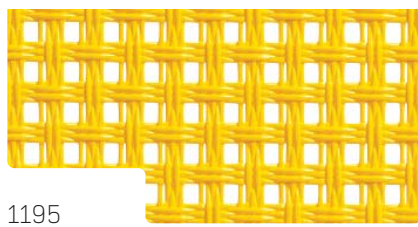
0149



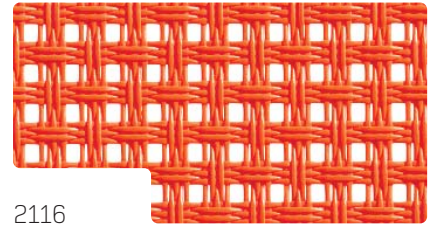
0155



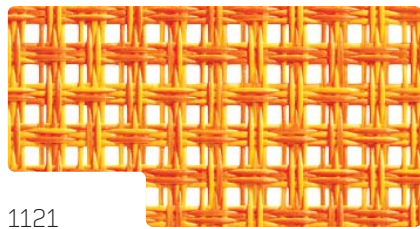
5602



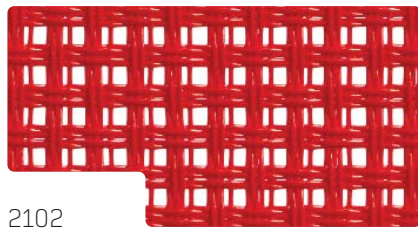
1195



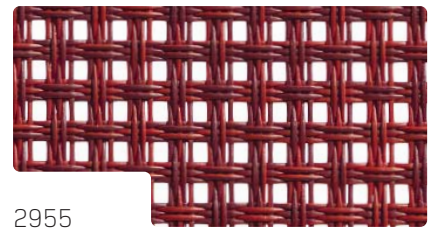
2116



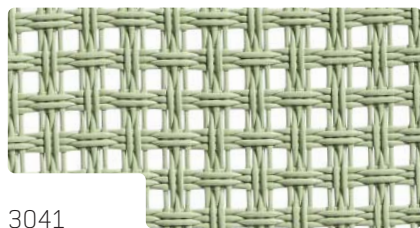
1121



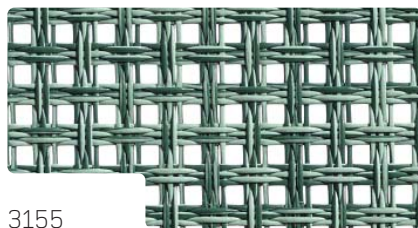
2102



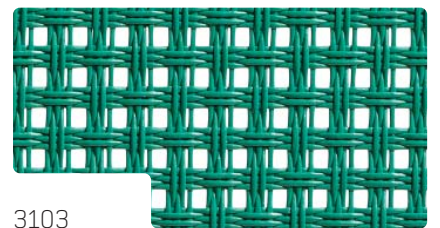
2955



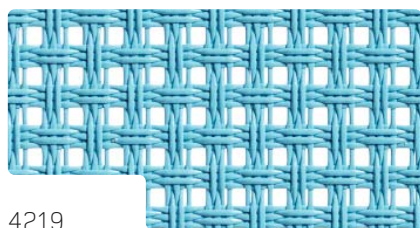
3041



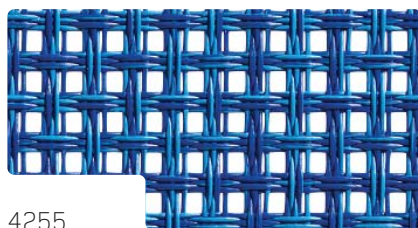
3155



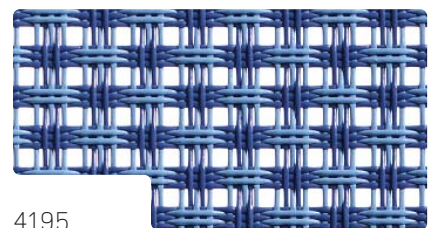
3103



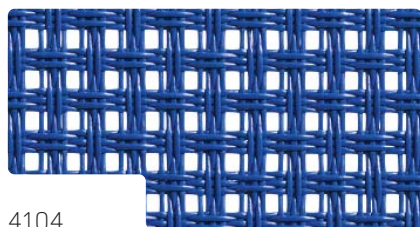
4219



4255



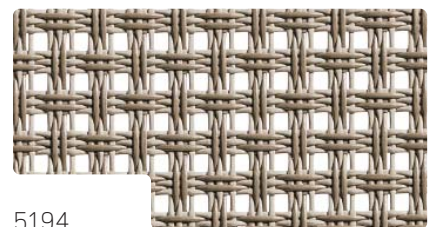
4195



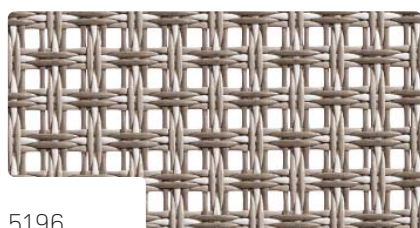
4104



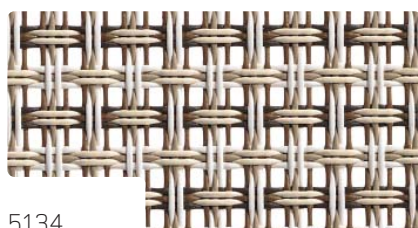
5190



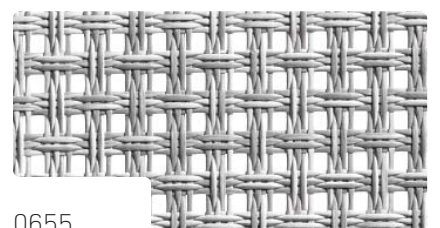
5194



5196

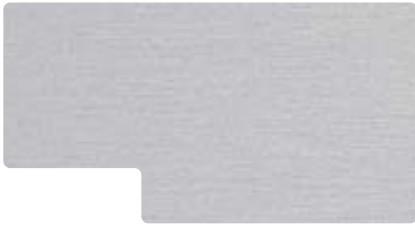


5134



0655

tessuti traforati | open-work PVC fabrics | weitmaschiger Textilene | tissus ajourés



anodizzato | anozized aluminium



verniciato bianco | white lacquered

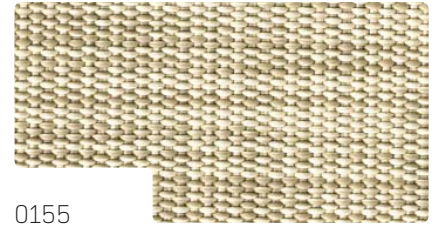
campioni di verniciatura telai
samples of lacquered frames
Muster von lackierten Rahmen
échantillons des vernies des armatures



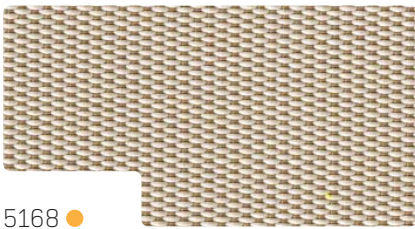
0108



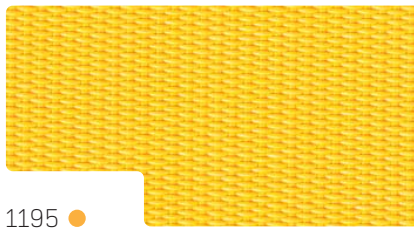
0149



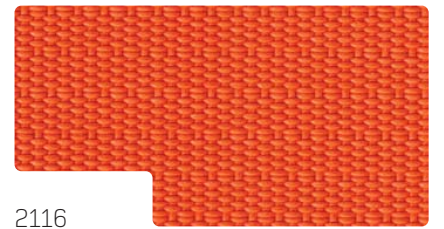
0155



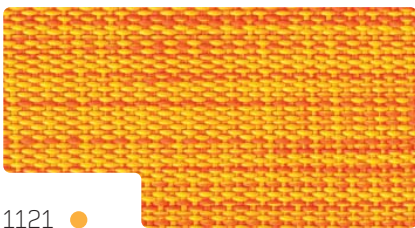
5168 ●



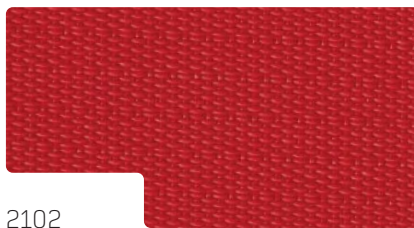
1195 ●



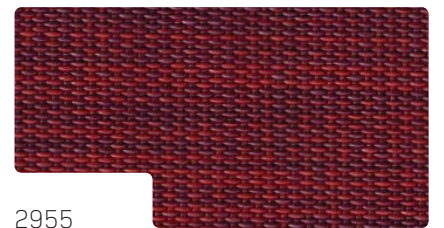
2116



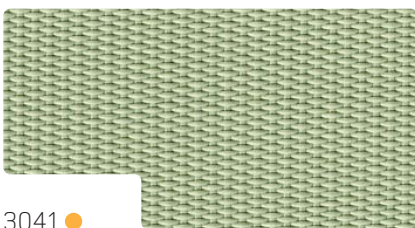
1121 ●



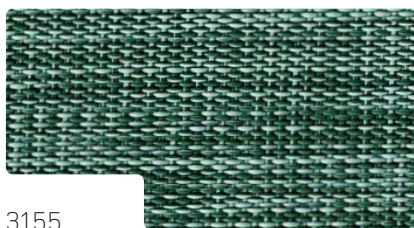
2102



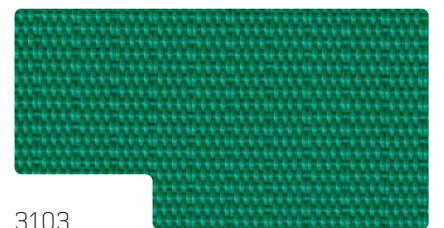
2955



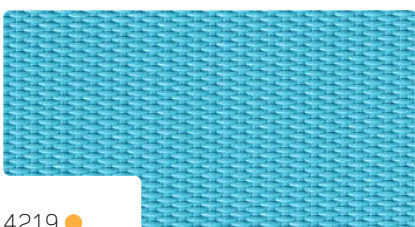
3041 ●



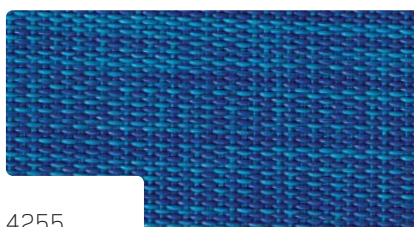
3155



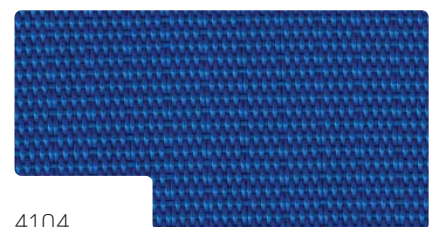
3103



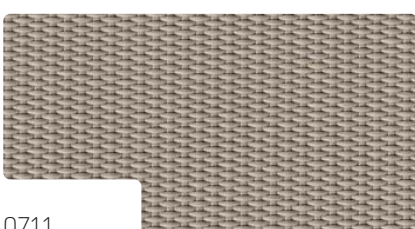
4219 ●



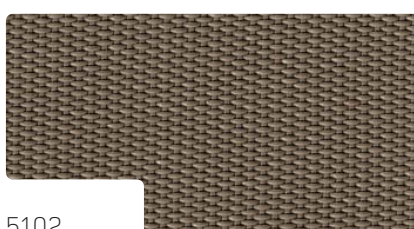
4255



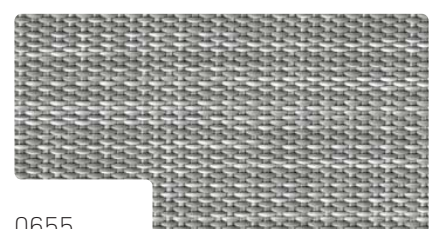
4104



0711



5102



0655

tessuti pesanti | thick PVC fabrics | wetterfester Textilene | tissus épais

PVC



Fire retardant



Caratteristiche tecniche | Technical data

tessuto pesante thick PVC fabric

Composizione: <i>Fibre analysis:</i>	70% polivinile <i>70% polyvinyl</i>	30% poliestere <i>30% polyester</i>
Costruzione: <i>Construction:</i>	ordito 13,2 - trama 5 fili/cm <i>warp 13,2 - weft 5 threads/cm</i>	
Spessore: <i>Thickness:</i>	1,7 mm <i>1,7 mm</i>	
Altezza: <i>Width:</i>	70 cm <i>70 cm</i>	
Peso: <i>Weight:</i>	960 gr/m ² <i>960 gr/sqm</i>	
Carico di rottura: <i>Breaking load:</i>	370 kg/5 cm ordito <i>370 kg/5 cm warp</i>	220 kg/5 cm trama <i>220 kg/5 cm weft</i>

tessuto traforato open-work PVC fabric

Composizione: <i>Fibre analysis:</i>	70% polivinile <i>70% polyvinyl</i>	30% poliestere <i>30% polyester</i>
Costruzione: <i>Construction:</i>	ordito 7,5 - trama 7,5 fili/cm <i>warp 7,5 - weft 7,5 threads/cm</i>	
Spessore: <i>Thickness:</i>	1,7 mm <i>1,7 mm</i>	
Altezza: <i>Width:</i>	70 cm <i>70 cm</i>	
Peso: <i>Weight:</i>	740 gr/m ² <i>740 gr/sqm</i>	
Carico di rottura: <i>Breaking load:</i>	340 kg/5 cm ordito <i>340 kg/5 cm warp</i>	340 kg/5 cm trama <i>340 kg/5 cm weft</i>

● disponibile solo per tettino | available only for sunshade



non candeggiare
don't bleach



è ammesso il lavaggio a mano
cold hand washing is permitted



lavare in acqua fredda
only cold washing is permitted